

# LOOK

INSIDE NAZI GERMANY TODAY

BY *Oswald Garrison Villard*

ROOSEVELT'S CHOICE FOR PRESIDENT

WEEK-END SKI DATE

MURDER ON HORSEBACK

By Henry McLemore



JOAN CRAWFORD

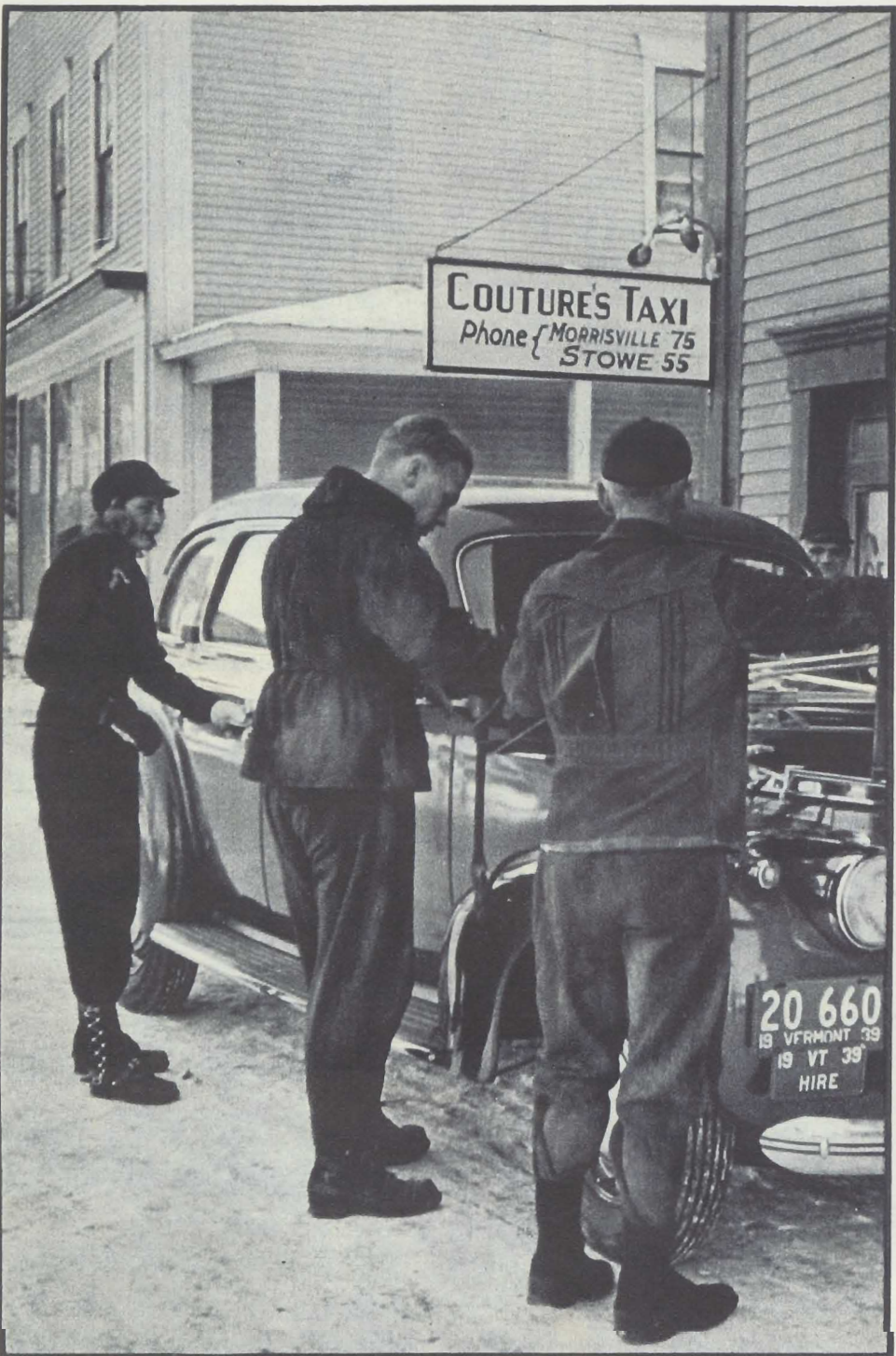
MARCH 12, 1940 10¢



**2** Gerry meets Phyllis an hour and a half later when the train makes a stop at New Haven, Conn., where he's studying law. The night is cold, but the welcome's warm.



**3** They join other skiers in the club car. Gerry wins at backgammon while Phyllis anticipates the next day with ski-wise talk of "schusses" and "stems."



**4** Saturday morning in Stowe, Vt. After breakfast at the Green Mountain Inn, where they have rooms, they lash skis to a taxi and drive four miles to Toll House Slope.



**5** The New England weather is perfect—gray sky, light snowfall. Gerry binds Phyllis's skis onto her heavy ski boots. **CONTINUED ON NEXT PAGE**