

The original documents are located in Box 35, folder “Christmas, 1974 - National Christmas Tree” of the Sheila Weidenfeld Files at the Gerald R. Ford Presidential Library.

Copyright Notice

The copyright law of the United States (Title 17, United States Code) governs the making of photocopies or other reproductions of copyrighted material. Gerald Ford donated to the United States of America his copyrights in all of his unpublished writings in National Archives collections. Works prepared by U.S. Government employees as part of their official duties are in the public domain. The copyrights to materials written by other individuals or organizations are presumed to remain with them. If you think any of the information displayed in the PDF is subject to a valid copyright claim, please contact the Gerald R. Ford Presidential Library.

Some items in this folder were not digitized because it contains copyrighted materials. Please contact the Gerald R. Ford Presidential Library for access to these materials.

AMERICAN

MOTORIST

A MAGAZINE OF DOMESTIC AND FOREIGN TRAVEL FOR MEN AND WOMEN WHO

ms. matson
another aaa item on
the Pageant of Peace.
See page 4.

Beth Knisley
Travel Editor



Cordially, Beth

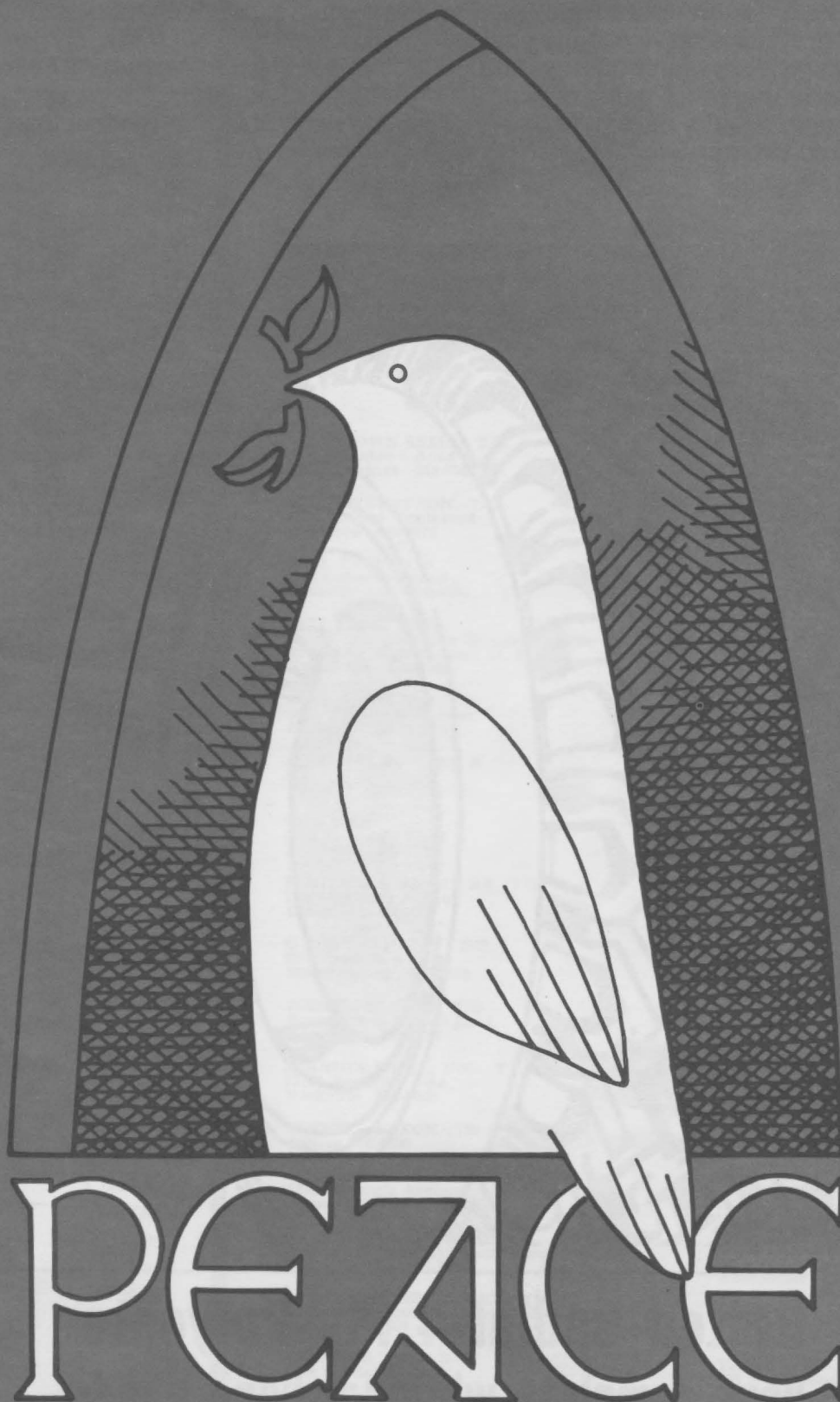
DEPARTMENT OF PUBLIC RELATIONS

AMERICAN AUTOMOBILE ASSOCIATION

8111 GATEHOUSE ROAD, FALLS CHURCH, VA. 22042
703 AAA-6332

MBER 1974

Fifty Cents



Pageant of Peace

The National Christmas Tree, planted a little more than a year ago on the Ellipse, has been pronounced healthy and ready for its second Pageant of Peace celebration.

National Park Service horticulturists say the Colorado blue spruce from the Pennsylvania mountains has shown a good growth rate and established a good root system during the past year, which makes it ready for more extensive decorating this holiday season.

So on with the festivities. They last from Dec. 17 until Jan. 1. President Ford is scheduled to light the tree in opening ceremonies Dec. 17.

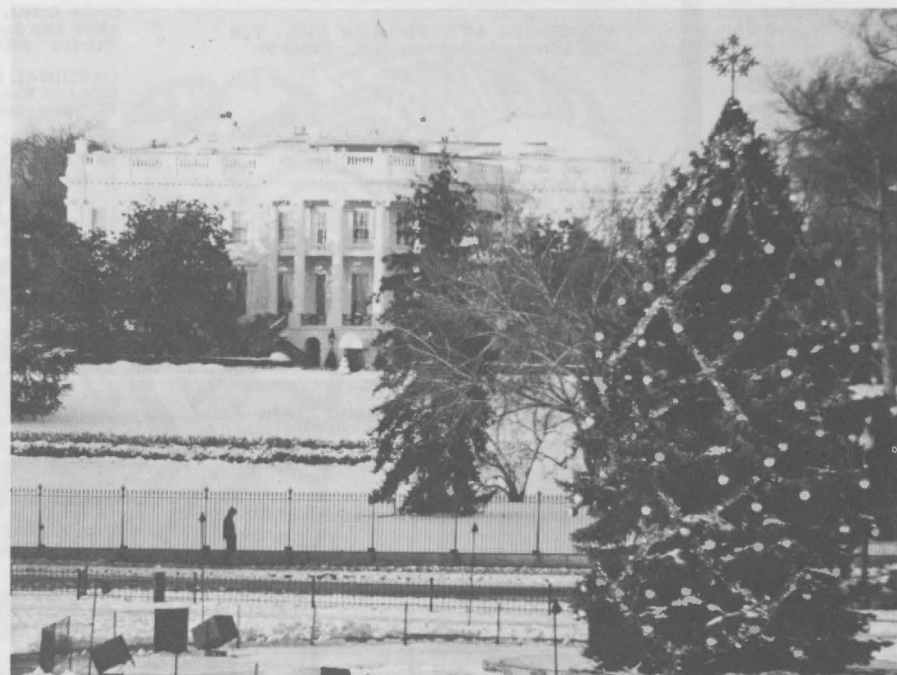
A pathway of peace is formed by 57 living trees, one for each state and territory. The trees come

from local nurseries and will be planted later on National Park Service grounds. As with last year's decorations, lighting is designed for maximum glitter using a minimum of electricity.

Dancer, Prancer . . . even Rudolf and the rest of the reindeer are added to the southwest side of the Ellipse for atmosphere and children from area schools will again adorn tree-shaped forms with homemade decorations.

Singing and instrumental groups from throughout the country will perform during the pageant. Entertainment has been scheduled for evenings so the largest number of persons can enjoy them.

As for snow, the Park Service won't make any predictions.



DECEMBER 1974
Volume XLIII
Number 8

PUBLISHER

Norman R. Weiss

EDITOR

Glenn T. Lashley

CONTRIBUTING EDITOR

Penny Ward

SPECIAL EDITIONS EDITOR

Sandy Baker

FOOD AND TRAVEL CONSULTANT

Louise Hubbard

ADVERTISING MANAGER

Tom Reid

DISTRICT OF COLUMBIA DIVISION—AAA

Manager

Norman R. Weiss

Division Offices

8111 Gatehouse Road
Falls Church, Va. 22042

312 S. Washington Street
Alexandria, Va. 22314

3900 N. Fairfax Drive
Arlington, Va. 22203

1730 Pennsylvania Avenue, N.W.
Washington, D. C. 20006

5401 Ager Road
Hyattsville, Md. 20782

Wheaton Plaza
North Building
Wheaton, Md. 20902

4 • THE PAGEANT OF PEACE

Our national Christmas party will begin December 17 when President Ford will light the National Christmas Tree on the Ellipse.

6 • THE JOY OF (SOMEONE ELSE'S) COOKING

Our area's noted old inns will treat you to a few hours of dining pleasure and holiday specialties.

8 • WE'RE COMING AS FAST AS WE CAN

Our Emergency Road Service Field Representatives hurry to give you the best service possible. But sometimes, unnecessary, non-emergency calls break down the system.

12 • THE AAA FOUNDATION FOR TRAFFIC SAFETY

This report provides a brief description of this organization dedicated to the advancement of traffic safety.

14 • THE WIDENING OF THE CAPITAL BELTWAY

This pictorial look at the building of I-495 explains the complexities of constructing interstate highways.

19 • BEFORE THE FAST, HURRAY FOR THE EXCESS

You're invited to join us for Mardi Gras, the traditional festival in the City on the Levee.

20 • EPA'S FUEL ECONOMY DERBY

AAA's Environmental Affairs experts examine what the 1975 mileage ratings mean to the motorist.

22 • HOW TO GO ON ICE AND SNOW

AAA offers timely tips for winter driving.

10 EDITORIALS

11 AAA IN ACTION

18 CONSUMERS' CORNER

24 MOTOR CITY MEMO

25 SPARE PARTS

29 CAR CLINIC

ON THE COVER: May the peace and joy of this holiday season linger throughout the year.

AMERICAN

MOTORIST



PUBLICATION AND MAGAZINE OFFICE, 18 CARLISLE ST., GETTYSBURG, PA. 17325. OFFICES IN GETTYSBURG AND ROANOKE, VA. PUBLISHED MONTHLY. ENTERED AS SECOND CLASS MATTER FEB. 2, 1934, AT GETTYSBURG, PA., POST OFFICE UNDER ACT OF MARCH 3, 1879. FORMERLY WESTERN VIRGINIA MOTOR NEWS. COPYRIGHT 1974 BY AMERICAN AUTOMOBILE ASSOCIATION. TOM REID, 1730 PENNSYLVANIA AVENUE, N.W., WASHINGTON, D. C., ADVERTISING SUBSCRIPTIONS: \$5 YEARLY; \$7.50 OVERSEAS.

THE WHITE HOUSE

WASHINGTON

ANNUAL CHRISTMAS PAGEANT OF PEACE

THE ELLIPSE

Tuesday -, December 17, 1974

DEPARTURE: 5:28 P.M.

From: Terry O'Donnell

BACKGROUND:

While every President since Calvin Coolidge has participated at least once during his Administration in the lighting of a symbolic National Christmas tree, the first "Christmas Pageant of Peace" was not organized until 1954 when a group of local civic and business leaders banded together to formalize the ceremonies. The tradition has continued and the Pageant has grown to become the focal point of the Yuletide season in the Nation's Capital.

The focus of the celebration, which runs from December 17 to January 1, is the national Christmas tree, a living 42-foot Colorado blue Spruce donated last year by the National Arborists Association as a continuing year-round symbol of the Pageant and all it represents. Prior to 1973, each year's tree came from a different State.

In addition to the tree lighting ceremony, this year's Pageant will offer a "Pathway of Peace" composed of 57 live Norway spruce representing each of the 50 States, six territories, and the District of Columbia. These trees will be planted throughout the National Capital Parks after the Pageant. Eight live reindeer from the National Zoo will be on display as well as a sleigh ride for youngsters, evening musical entertainment and other Christmas displays and activities.

Your participation will involve observing a brief program, delivery of remarks and, finally, throwing of the switch to light the tree. The event is scheduled for live television coverage.

SEQUENCE:

5:28 p.m. You, Mrs. Ford and Susan board motorcade on South Grounds and depart en route Ellipse.

5:29 p.m. You, Mrs. Ford and Susan arrive staging area and proceed on foot to off-stage holding area.

5:30 p.m. Pause for announcement.

5:31 p.m. "Ruffles and Flourishes"
Announcement
"Hail to the Chief"

You, Mrs. Ford, and Susan proceed onto the stage and take your seats.

LIVE NATIONWIDE TELEVISION
ATTENDANCE: 1,000

5:32 p.m. Brief remarks by John W. Dixon, Master of Ceremonies.

5:33 p.m. Prayer for Peace by The Most Reverend William V. Baum, Archbishop of Washington.

5:35 p.m. "Behold that Star" by the University of Michigan Men's Glee Club.

5:37 p.m. Remarks by Girl Scout Camille Deppe.

NOTE: En route the podium, Camille will present Mrs. Ford with a bouquet of flowers. As she returns to her seat, Camille will shake hands with you.

5:38 p.m. Remarks by Boy Scout James Williams.

NOTE: Upon completion of his remarks, James Williams will shake hands with Mrs. Ford and you as he returns to his seat.

3. Annual Christmas Pageant of Peace
Tuesday - December 17, 1974

5:39 p.m. Dixon's introduction of Secretary Rogers
C.B. Morton.

5:40 p.m. Secretary Morton makes remarks, concluding
with the acknowledgement of Mrs. Ford,
Susan, and the introduction of you.

5:43 p.m. PRESIDENTIAL REMARKS.

LIVE NATIONWIDE TELEVISION.

5:48 p.m. Your remarks conclude and you return to your seat.

5:49 p.m. John Dixon steps to the podium and asks
you to light the National Christmas Tree.

5:50 p.m. You stand and turn to your left to invite Camille Deppe
and James Williams, the two Scouts, to join you at the
switch box (stage left) in lighting the National Christmas
Tree.

You, with the two Scouts to your left, place your
left hand on the switch box with that of the children
and ask them to help you throw the switch.

5:52 p.m. The tree is lighted.

5:52 p.m. You and the two Scouts remain standing at the
switch box for the signing of "O Tannenbaum" by
the Michigan Men's Glee Club.

5:54 p.m. You return to your seat upon completion of
"O Tannenbaum."

5:55 p.m. Benediction by Reverend E. Joseph Mackov,
Rector of All Soul's Memorial Episcopal
Church.

5:56 p.m. Mr. Dixon thanks the audience for coming.

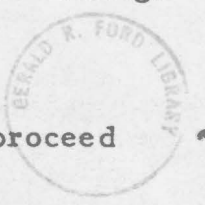
5:57 p.m. Music by the U.S. Marine Band.

5:57 p.m. You and Mrs. Ford depart the stage and proceed
to motorcade for boarding.

5:59 p.m. Motorcade departs en route South Grounds.

6:00 p.m. Arrive South Grounds of the White House.

#####





all about travel

Beth Knisley
Travel Editor
American Automobile Association

Q. I will be flying during the Christmas holidays and carrying gifts with me on the plane. Will the airlines unwrap my gifts as they did last year?

A. The Air Transport Association told AAA that airlines are urging passengers to check with the office of the airport manager to see if the airport from which they are departing has an x-ray detecting device. If it does, gift-wrapped packages may be brought aboard. For the other airports which are not covered by the detecting device, all passengers must submit to an inspection of all hand luggage they take with them into the cabin. Rather than having Christmas-wrapped packages opened at security checkpoints, the airlines suggest the following alternatives:

--Put gift-wrapped packages in luggage that is to be checked aboard aircraft.

--Consider using a service provided by many airlines in which you can bring a package to the ticket counter 30 minutes before flight time. It will move in the cargo hold of your flight and you can pick it up from the airline about 30 minutes after the flight arrives.

--Consider sending Christmas gifts ahead by air parcel post, air express or air freight.

- more -

Q. Is there any guide available for teenagers who are planning to travel abroad?

A. "Youth Travel Abroad-What to Know Before You Go" recently has been published by the U.S. Department of State and is a handy guide for young persons planning a trip abroad. The booklet notes that in addition to a handful of maps and a pocket notebook, travelers will need a passport; visas (many countries require a visa before entering their territory); tickets (purchase them both ways, as far in advance as possible); reservations, (reserve places, also as far in advance as possible); driver's license (international drivers' licenses can be obtained through AAA local offices for \$3); vaccination (check with local Health Department for specifics); money (carry travelers checks, don't carry large amounts); and safeguard all valuables - unattended youth hostel rooms, locked car glove compartments, and backpacks are prime theft targets. Money belts are useful for hikers. Have an advance arrangement with friend, family or bank in case an emergency leaves you short of cash.

✓ Q. What type of festivities are planned for the Christmas Pageant of Peace in Washington, D. C.? (Nat'l Park Service)

A. The nation's Christmas season officially opens December 17 when President Ford throws the switch that will light the national Christmas Tree. The 1974 National Christmas Tree, a 42-foot living Colorado blue spruce from northern Pennsylvania, will have as its only lighted ornament a 36-inch wide golden snowflake. Eight spotlights around the tree's base will illuminate the tree's decorations of garlands and balls. The Pageant of Peace will run through January 1. Daily programs featuring choruses, bellringers and instrumental groups are scheduled to perform from 7 to 9:30 p.m. The University of Michigan's men's glee club will perform on December 17.

R

FORD-CHRISTMAS

WASHINGTON (AP) -- PRESIDENT FORD SET THOUSANDS OF LIGHTS AGLOW ON THE NATION'S CHRISTMAS TREE AND WISHED AMERICANS "PEACE, ECONOMIC WELL-BEING FOR ALL AND A CARING CLIMATE THAT WILL PERMIT EVERYONE TO ACHIEVE THE FULLEST POTENTIAL OF THEIR HUMAN GIFTS."

THE PRESIDENT PRESSED A BUTTON AT DUSK TUESDAY WHICH ILLUMINATED A 42-FOOT TALL LIVING COLORADO BLUE SPRUCE ON THE ELLIPSE AS A CROWD ESTIMATED AT 10,000 WATCHED.

HE WISHED THE NATION "A STRONG FUTURE" AND FOR "EVERYONE ONE OF US THE REALIZATION OF LOVE AND BELONGING." OF THE BILLIONS OF WORDS WRITTEN ABOUT CHRISTMAS, SAID FORD, "NONE HAVE SAID IT MORE ELOQUENTLY THAN 'PEACE ON EARTH, GOOD WILL TOWARD MEN.'"

THE TREE, GROWN IN HUNLOCK CREEK, PA., AND TRANSPLANTED HERE LAST YEAR, IS ADORNED WITH 2,000 GOLD LIGHTS SPECIALLY DESIGNED TO MAINTAIN A COOL TEMPERATURE THAT WILL NOT HARM THE TREE. IT ALSO HAS 450 WHITE TWINKLE LIGHTS AND A FOUR-FOOT-TALL ORNAMENT OF AMBER COLORED LIGHTS ATTOP.

JUST AS LAST YEAR, DURING THE OIL EMBARGO, THE TREE LIGHTING WAS AT A LOWERED LEVEL AS AN ENERGY CONSERVATION EXAMPLE.

LATER IN THE EVENING THE PRESIDENT AND MRS. FORD SERVED AS HOSTS FOR A HUGE CHRISTMAS BALL AT THE WHITE HOUSE FOR ALL MEMBERS OF THE OUTGOING 93RD CONGRESS.

ABOUT 900 GUESTS ATTENDED THE BALL AND FORD DECLARED, "THIS IS MY KIND OF PARTY. I SURE ENJOY IT."

THERE WAS CHAMPAGNE AND MIXED DRINKS, ROAST BEEF AND PATE' AND DANCING IN THE EAST ROOM.

THE PRESIDENT CALLED ATTENTION TO THE WHITE HOUSE HOLIDAY DECORATIONS, INCLUDING A CHRISTMAS TREE FROM MICHIGAN, AND SAID HE AND THE TREE HAVE A LOT IN COMMON:

"NEITHER ONE OF US EXPECTED TO BE IN THE WHITE HOUSE A FEW MONTHS AGO. BOTH OF US ARE A LITTLE GREEN. WE'VE BOTH BEEN PUT ON A PEDESTAL . . . AND WE'VE BOTH BEEN TRIMMED A LITTLE."



Pageant of Peace

The National Christmas Tree, planted a little more than a year ago on the Ellipse, has been pronounced healthy and ready for its second Pageant of Peace celebration.

National Park Service horticulturists say the Colorado blue spruce from the Pennsylvania mountains has shown a good growth rate and established a good root system during the past year, which makes it ready for more extensive decorating this holiday season.

So on with the festivities. They last from Dec. 17 until Jan. 1. President Ford is scheduled to light the tree in opening ceremonies Dec. 17.

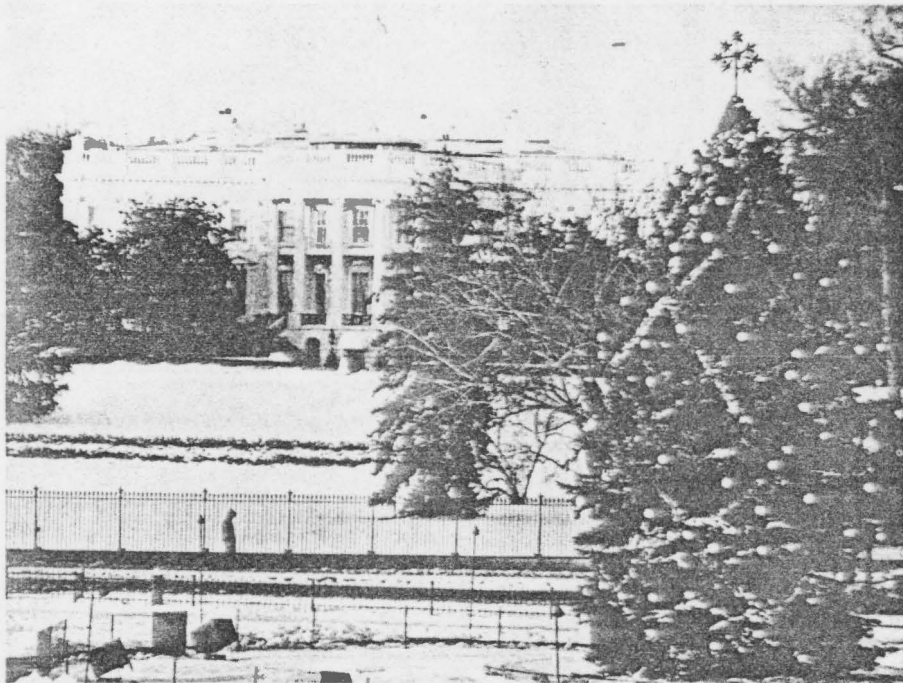
A pathway of peace is formed by 57 living trees, one for each state and territory. The trees come

from local nurseries and will be planted later on National Park Service grounds. As with last year's decorations, lighting is designed for maximum glitter using a minimum of electricity.

Dancer, Prancer . . . even Rudolf and the rest of the reindeer are added to the southwest side of the Ellipse for atmosphere and children from area schools will again adorn tree-shaped forms with homemade decorations.

Singing and instrumental groups from throughout the country will perform during the pageant. Entertainment has been scheduled for evenings so the largest number of persons can enjoy them.

As for snow, the Park Service won't make any predictions.



Q. Is there any guide available for teenagers who are planning to travel abroad?

A. "Youth Travel Abroad-What to Know Before You Go" recently has been published by the U.S. Department of State and is a handy guide for young persons planning a trip abroad. The booklet notes that in addition to a handful of maps and a pocket notebook, travelers will need a passport; visas (many countries require a visa before entering their territory); tickets (purchase them both ways, as far in advance as possible); reservations, (reserve places, also as far in advance as possible); driver's license (international drivers' licenses can be obtained through AAA local offices for \$3); vaccination (check with local Health Department for specifics); money (carry travelers checks, don't carry large amounts); and safeguard all valuables - unattended youth hostel rooms, locked car glove compartments, and backpacks are prime theft targets. Money belts are useful for hikers. Have an advance arrangement with friend, family or bank in case an emergency leaves you short of cash.

✓ Q. What type of festivities are planned for the Christmas Pageant of Peace in Washington, D. C.? (Nat'l Park Service)

A. The nation's Christmas season officially opens December 17 when President Ford throws the switch that will light the national Christmas Tree. The 1974 National Christmas Tree, a 42-foot living Colorado blue spruce from northern Pennsylvania, will have as its only lighted ornament a 36-inch wide golden snowflake. Eight spotlights around the tree's base will illuminate the tree's decorations of garlands and balls. The Pageant of Peace will run through January 1. Daily programs featuring choruses, bellringers and instrumental groups are scheduled to perform from 7 to 9:30 p.m. The University of Michigan's men's glee club will perform on December 17.

-AAA-

THE WHITE HOUSE

WASHINGTON

ANNUAL CHRISTMAS PAGEANT OF PEACE

THE ELLIPSE

Tuesday -, December 17, 1974

DEPARTURE: 5:28 P.M.

From: Terry O'Donnell

BACKGROUND:

While every President since Calvin Coolidge has participated at least once during his Administration in the lighting of a symbolic National Christmas tree, the first "Christmas Pageant of Peace" was not organized until 1954 when a group of local civic and business leaders banded together to formalize the ceremonies. The tradition has continued and the Pageant has grown to become the focal point of the Yuletide season in the Nation's Capital.

The focus of the celebration, which runs from December 17 to January 1, is the national Christmas tree, a living 42-foot Colorado blue Spruce donated last year by the National Arborists Association as a continuing year-round symbol of the Pageant and all it represents. Prior to 1973, each year's tree came from a different State.

In addition to the tree lighting ceremony, this year's Pageant will offer a "Pathway of Peace" composed of 57 live Norway spruce representing each of the 50 States, six territories, and the District of Columbia. These trees will be planted throughout the National Capital Parks after the Pageant. Eight live reindeer from the National Zoo will be on display as well as a sleigh ride for youngsters, evening musical entertainment and other Christmas displays and activities.

Your participation will involve observing a brief program, delivery of remarks and, finally, throwing of the switch to light the tree. The event is scheduled for live television coverage.

SEQUENCE:

5:28 p.m. You, Mrs. Ford and Susan board motorcade on South Grounds and depart en route Ellipse.

5:29 p.m. You, Mrs. Ford and Susan arrive staging area and proceed on foot to off-stage holding area.

5:30 p.m. Pause for announcement.

5:31 p.m. "Ruffles and Flourishes"
Announcement
"Hail to the Chief"

You, Mrs. Ford, and Susan proceed onto the stage and take your seats.

LIVE NATIONWIDE TELEVISION
ATTENDANCE: 1,000

5:32 p.m. Brief remarks by John W. Dixon, Master of Ceremonies.

5:33 p.m. Prayer for Peace by The Most Reverend William V. Baum, Archbishop of Washington.

5:35 p.m. "Behold that Star" by the University of Michigan Men's Glee Club.

5:37 p.m. Remarks by Girl Scout Camille Deppe.

NOTE: En route the podium, Camille will present Mrs. Ford with a bouquet of flowers. As she returns to her seat, Camille will shake hands with you.

5:38 p.m. Remarks by Boy Scout James Williams.

NOTE: Upon completion of his remarks, James Williams will shake hands with Mrs. Ford and you as he returns to his seat.

5:39 p.m. Dixon's introduction of Secretary Rogers C.B. Morton.

5:40 p.m. Secretary Morton makes remarks, concluding with the acknowledgement of Mrs. Ford, Susan, and the introduction of you.

5:43 p.m. PRESIDENTIAL REMARKS.

LIVE NATIONWIDE TELEVISION.

5:48 p.m. Your remarks conclude and you return to your seat.

5:49 p.m. John Dixon steps to the podium and asks you to light the National Christmas Tree.

5:50 p.m. You stand and turn to your left to invite Camille Deppe and James Williams, the two Scouts, to join you at the switch box (stage left) in lighting the National Christmas Tree.

You, with the two Scouts to your left, place your left hand on the switch box with that of the children and ask them to help you throw the switch.

5:52 p.m. The tree is lighted.

5:52 p.m. You and the two Scouts remain standing at the switch box for the signing of "O Tannenbaum" by the Michigan Men's Glee Club.

5:54 p.m. You return to your seat upon completion of "O Tannenbaum."

5:55 p.m. Benediction by Reverend E. Joseph Mackov, Rector of All Soul's Memorial Episcopal Church.

5:56 p.m. Mr. Dixon thanks the audience for coming.

5:57 p.m. Music by the U.S. Marine Band.

5:57 p.m. You and Mrs. Ford depart the stage and proceed to motorcade for boarding.

5:59 p.m. Motorcade departs en route South Grounds.

6:00 p.m. Arrive South Grounds of the White House.

#####