

The original documents are located in Box 7, folder “10/20/75 - Tree Planting Ceremony” of the Sheila Weidenfeld Files at the Gerald R. Ford Presidential Library.

Copyright Notice

The copyright law of the United States (Title 17, United States Code) governs the making of photocopies or other reproductions of copyrighted material. Gerald Ford donated to the United States of America his copyrights in all of his unpublished writings in National Archives collections. Works prepared by U.S. Government employees as part of their official duties are in the public domain. The copyrights to materials written by other individuals or organizations are presumed to remain with them. If you think any of the information displayed in the PDF is subject to a valid copyright claim, please contact the Gerald R. Ford Presidential Library.

THE WHITE HOUSE

WASHINGTON

October 17, 1975

TREE PLANTING CEREMONY AND REMARKS

Monday, October 20, 1975

11:30 AM to 12:00 NOON (30 Minutes)

Near the North Portico

White House Grounds

From: Dr. Theodore C. Marrs

I. PURPOSE

To plant a seedling from the John Adams American Elm, the oldest tree on the White House Grounds, in commemoration of our nation's Bicentennial and deliver appropriate remarks.

II. BACKGROUND, PARTICIPANTS AND PRESS PLAN

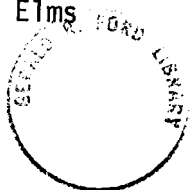
A. Background: During his Presidency, which began 150 years ago, John Quincy Adams planted an American Elm tree on the White House Grounds. That tree has flourished and grown during the past century and a half and today stands taller than any other tree on the grounds.

1. Throughout history, the planting of a tree has symbolized man's stewardship of the land and its renewable resources. The planting of any tree is a literal expression of faith in the future.

2. A seedling from the John Quincy Adams American Elm has been carefully nurtured for this occasion and now, as a sixteen foot high tree, will be planted at a spot near the North Portico where another tree once stood and was lost in 1972. The location is approximately 90 feet northwest of the Executive Residence.

3. In addition to visibility from Pennsylvania Avenue, the tree will also be in the background of regular television news broadcasts which are held on the North Grounds.

4. This is the best time for the ceremony. American Elms should not be transplanted until late in the fall.



B. Program: The plan calls for the President to deliver his remarks and then to shovel the first spade-full of soil into the pit surrounding the tree, after which the several members of Congress will also spade earth into the area. There will be a short musical program preceding the ceremony as guests gather.

C. Participants: Congressional members from appropriate committees and from the American Revolution Bicentennial Administration Board of Directors, governmental representatives from involved agencies and representatives of various organizations concerned with forestry, environment, etc. (List to be provided)

D. Press Plan: Open Press Plan

III. TALKING POINTS

To be provided by Paul Theis.

Attached is a list of previous tree plantings by former Presidents.





IN REPLY REFER TO:

United States Department of the Interior

NATIONAL PARK SERVICE

NATIONAL CAPITAL PARKS

1100 OHIO DRIVE SW.

WASHINGTON, D.C. 20242

October 16, 1975

MEMORANDUM

TO: Mr. Rex Scouten, Chief Usher, The White House

From: Supervisory Horticulturist, The White House

Subject: List of Presidential Tree Plantings

Following is a list of trees planted by Presidents during their terms of office:

<u>TREE</u>	<u>PLANTED BY</u>	<u>DATE</u>
American Elm (Ulmus americana)	Pres. John Q. Adams	1826
Southern Magnolia (Magnolia grandiflora)	Pres. Andrew Jackson	1829-37
Pin Oak (Quercus palustris)	Pres. Wm. McKinley	Mar 18, 1898
American Elm (Ulmus americana)	Pres. Woodrow Wilson	Dec 18, 1913
American Elm (Ulmus americana)	Pres. Herbert Hoover	Apr 21, 1931
White Oak (Quercus alba)	Pres. Herbert Hoover	Dec 21, 1931
Black Walnut (Juglans nigra)	Pres. D. Eisenhower	Apr 14, 1957
Pin Oak (Quercus palustris)	Pres. D. Eisenhower	May 8, 1958
Northern Red Oak (Q. borealis rubra)	Pres. D. Eisenhower	Oct 13, 1960
Apple Tree "Pacific Pride" (Malus)	Pres. J. F. Kennedy	Apr 6, 1961
Willow Oak (Quercus phellos)	Pres. L. B. Johnson	Oct 22, 1963
Sequoia (Sequoia giganteum)	Pres. Richard Nixon	May 5, 1971



Office Copy

United States Department of the Interior

NATIONAL PARK SERVICE
NATIONAL CAPITAL PARKS
1100 OHIO DRIVE SW.
WASHINGTON, D.C. 20042



IN REPLY REFER TO:

October 16, 1975

Do you want

MEMORANDUM

TO: Mr. Rex Scowden, Chief, Usher, The White House
FROM: Supervisory Horticulturist, The White House
SUBJECT: List of Presidential Tree Plantings
Following is a list of trees planted by Presidents during their terms of office:

me to fill hole
growing people

DATE	PLANTED BY	TREE
1896	Pres. John Q. Adams	American Elm (Ulmus americana)
1899-1900	Pres. Andrew Jackson	Southern Magnolia (Magnolia grandiflora)
Mar 18, 1899	Pres. Wm. McKinley	Pin Oak (Quercus palustris)
Dec 18, 1913	Pres. Woodrow Wilson	American Elm (Ulmus americana)
Apr 21, 1931	Pres. Herbert Hoover	American Elm (Ulmus americana)
Dec 21, 1931	Pres. Herbert Hoover	White Oak (Quercus alba)
Apr 14, 1937	Pres. D. Eisenhower	Black Walnut (Juglans nigra)
May 8, 1958	Pres. D. Eisenhower	Pin Oak (Quercus palustris)
Oct 13, 1960	Pres. D. Eisenhower	Northern Red Oak (Quercus rubra)
Apr 6, 1961	Pres. J. F. Kennedy	Apple Tree "Pacific Pride" (Malus)
Oct 22, 1963	Pres. L. B. Johnson	Willow Oak (Quercus phellos)
May 5, 1971	Pres. Richard Nixon	Betula (Betula nigra)



file

THE WHITE HOUSE

WASHINGTON

October 17, 1975

TREE PLANTING CEREMONY AND REMARKS

Monday, October 20, 1975

11:30 AM to 12:00 NOON (30 Minutes)

Near the North Portico

White House Grounds

From: Dr. Theodore C. Marrs

I. PURPOSE

To plant a seedling from the John Adams American Elm, the oldest tree on the White House Grounds, in commemoration of our nation's Bicentennial and deliver appropriate remarks.

II. BACKGROUND, PARTICIPANTS AND PRESS PLAN

A. Background: During his Presidency, which began 150 years ago, John Quincy Adams planted an American Elm tree on the White House Grounds. That tree has flourished and grown during the past century and a half and today stands taller than any other tree on the grounds.

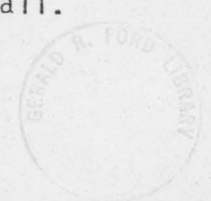
1. Throughout history, the planting of a tree has symbolized man's stewardship of the land and its renewable resources. The planting of any tree is a literal expression of faith in the future.

2. A seedling from the John Quincy Adams American Elm has been carefully nurtured for this occasion and now, as a sixteen foot high tree, will be planted at a spot near the North Portico where another tree once stood and was lost in 1972. The location is approximately 90 feet northwest of the Executive Residence.

3. In addition to visibility from Pennsylvania Avenue, the tree will also be in the background of regular television news broadcasts which are held on the North Grounds.

4. This is the best time for the ceremony. American Elms should not be transplanted until late in the fall.

copy



B. Program: The plan calls for the President to deliver his remarks and then to shovel the first spade-full of soil into the pit surrounding the tree, after which the several members of Congress will also spade earth into the area. There will be a short musical program preceding the ceremony as guests gather.

C. Participants: Congressional members from appropriate committees and from the American Revolution Bicentennial Administration Board of Directors, governmental representatives from involved agencies and representatives of various organizations concerned with forestry, environment, etc. (List to be provided)

D. Press Plan: Open Press Plan

III. TALKING POINTS

To be provided by Paul Theis.

Attached is a list of previous tree plantings by former Presidents.



United States Department of the Interior

NATIONAL PARK SERVICE

NATIONAL CAPITAL PARKS

1100 OHIO DRIVE SW.

WASHINGTON, D.C. 20242

October 16, 1975

IN REPLY REFER TO:

MEMORANDUM

TO: Mr. Rex Scouten, Chief Usher, The White House

From: Supervisory Horticulturist, The White House

Subject: List of Presidential Tree Plantings

Following is a list of trees planted by Presidents during their terms of office:

<u>TREE</u>	<u>PLANTED BY</u>	<u>DATE</u>
American Elm (<i>Ulmus americana</i>)	Pres. John Q. Adams	1826
Southern Magnolia (<i>Magnolia grandiflora</i>)	Pres. Andrew Jackson	1829-37
Pin Oak (<i>Quercus palustris</i>)	Pres. Wm. McKinley	Mar 18, 1893
American Elm (<i>Ulmus americana</i>)	Pres. Woodrow Wilson	Dec 18, 1913
American Elm (<i>Ulmus americana</i>)	Pres. Herbert Hoover	Apr 21, 1931
White Oak (<i>Quercus alba</i>)	Pres. Herbert Hoover	Dec 21, 1931
Black Walnut (<i>Juglans nigra</i>)	Pres. D. Eisenhower	Apr 14, 1957
Pin Oak (<i>Quercus palustris</i>)	Pres. D. Eisenhower	May 8, 1958
Northern Red Oak (<i>Q. borealis rubra</i>)	Pres. D. Eisenhower	Oct 13, 1960
Apple Tree "Pacific Pride" (<i>Malus</i>)	Pres. J. F. Kennedy	Apr 6, 1961
Willow Oak (<i>Quercus phellos</i>)	Pres. L. B. Johnson	Oct 22, 1963
Sequoia (<i>Sequoia giganteum</i>)	Pres. Richard Nixon	May 5, 1971

Office Copy



TREE PLANTING

Monday, October 20, 1975


I want to welcome all of you to the White House Lawn today. I am sorry the President could not be here with you. The groups represented here all have a common concern for preserving and enhancing America's environment. The President and I share your interest in seeing that this cherished legacy is preserved for generations.

Several Presidents have planted trees on the White House lawn. The magnificent magnolia tree on the south side of the White House was planted by Andrew Jackson.

It is especially appropriate that the tree to be planted today, an American Elm, is a seedling from a tree planted by John Quincy Adams in 1826 -- just 50 years after this Nation gained its independence.

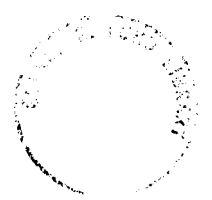
As part of our Bicentennial observance, thousands of trees will be planted around the Nation -- serving as permanent reminders of the celebration of our Nation's 200th birthday.

All of you involved in the program today deserve a special commendation for your continuing commitment to keeping our Nation beautiful. A special thank-you also must go to the National Park Service which maintains the White House Grounds so beautifully.



Traditionally, the planting of a tree has symbolized man's stewardship of the land and its renewable resources. The John Adams family was the first to live in this house in 1800. When their son -- John Quincy Adams -- planted the tree from which this seedling grew, the Nation was still young. We are older now -- but our faith in the future is as strong and as sturdy as this elm. So in that spirit, I plant this tree -- as a reminder of our past and a symbol of our future.

#



THE WHITE HOUSE
WASHINGTON

October 17, 1975

MEMORANDUM FOR:

TERRY O'DONNELL

FROM:

MILT MITLER *Milt*

This is some add on information to the Briefing Paper for the ceremonial tree planting activity on Monday, October 20, 1975 at 11:30 a.m.

Mr. Harry J. Banker, Executive Secretary of the National Arbor Day Committee, who will be here with his wife, will be celebrating his 62nd birthday.

Copy
Tom Steed -
Okla. D.
Wit Appropriation
Comm. for the
Exec. Residence
#
Gary Swehard
Dir. of Nat'l
Banker Service

Arbor &
Horticulture



THE WHITE HOUSE

WASHINGTON

October 17, 1975

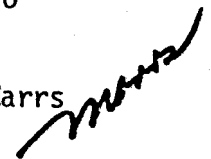
TREE PLANTING CEREMONY AND REMARKS

Monday, October 20, 1975

11:30 AM to 12:00 NOON (30 Minutes)

Near the North Portico

White House Grounds

From: Dr. Theodore C. Marrs 

I. PURPOSE

To plant a seedling from the John Adams American Elm, the oldest tree on the White House Grounds, in commemoration of our nation's Bicentennial and deliver appropriate remarks.

II. BACKGROUND, PARTICIPANTS AND PRESS PLAN

A. Background: During his Presidency, which began 150 years ago, John Quincy Adams planted an American Elm tree on the White House Grounds. That tree has flourished and grown during the past century and a half and today stands taller than any other tree on the grounds.

1. Throughout history, the planting of a tree has symbolized man's stewardship of the land and its renewable resources. The planting of any tree is a literal expression of faith in the future.

2. A seedling from the John Quincy Adams American Elm has been carefully nurtured for this occasion and now, as a sixteen foot high tree, will be planted at a spot near the North Portico where another tree once stood and was lost in 1972. The location is approximately 90 feet northwest of the Executive Residence.

3. In addition to visibility from Pennsylvania Avenue, the tree will also be in the background of regular television news broadcasts which are held on the North Grounds.

4. This is the best time for the ceremony. American Elms should not be transplanted until late in the fall.

B. Program: The plan calls for the President to deliver his remarks and then to shovel the first spade-full of soil into the pit surrounding the tree, after which the several members of Congress will also spade earth into the area. There will be a short musical program preceding the ceremony as guests gather.

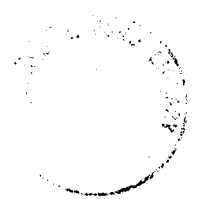
C. Participants: Congressional members from appropriate committees and from the American Revolution Bicentennial Administration Board of Directors, governmental representatives from involved agencies and representatives of various organizations concerned with forestry, environment, etc. (List to be provided)

D. Press Plan: Open Press Plan

III. TALKING POINTS

To be provided by Paul Theis.

Attached is a list of previous tree plantings by former Presidents.





IN REPLY REFER TO:

United States Department of the Interior

NATIONAL PARK SERVICE
NATIONAL CAPITAL PARKS
1100 OHIO DRIVE SW.
WASHINGTON, D.C. 20242

October 16, 1975

MEMORANDUM

TO: Mr. Rex Scouten, Chief Usher, The White House

From: Supervisory Horticulturist, The White House

Subject: List of Presidential Tree Plantings

Following is a list of trees planted by Presidents during their terms of office:

<u>TREE</u>	<u>PLANTED BY</u>	<u>DATE</u>
American Elm (<i>Ulmus americana</i>)	Pres. John Q. Adams	1826
Southern Magnolia (<i>Magnolia grandiflora</i>)	Pres. Andrew Jackson	1829-37
Pin Oak (<i>Quercus palustris</i>)	Pres. Wm. McKinley	Mar 18, 1893
American Elm (<i>Ulmus americana</i>)	Pres. Woodrow Wilson	Dec 18, 1913
American Elm (<i>Ulmus americana</i>)	Pres. Herbert Hoover	Apr 21, 1931
White Oak (<i>Quercus alba</i>)	Pres. Herbert Hoover	Dec 21, 1931
Black Walnut (<i>Juglans nigra</i>)	Pres. D. Eisenhower	Apr 14, 1957
Pin Oak (<i>Quercus palustris</i>)	Pres. D. Eisenhower	May 8, 1958
Northern Red Oak (<i>Q. borealis rubra</i>)	Pres. D. Eisenhower	Oct 13, 1960
Apple Tree "Pacific Pride" (<i>Malus</i>)	Pres. J. F. Kennedy	Apr 6, 1961
Willow Oak (<i>Quercus phellos</i>)	Pres. L. B. Johnson	Oct 22, 1963
Sequoia (<i>Sequoia giganteum</i>)	Pres. Richard Nixon	May 5, 1971

Office Copy



Sent to per
Dati

Mike Walfe

Am Assoc of Nursery
men

230 Southern Bldg
~~##~~ Wash, D.C.

20005

remarks
from

tree ceremony

12-96-1664

7



UPI 10-20 02:05 PED

UP-092

(BETTY)

WASHINGTON (UPI) -- BETTY FORD PINCH-HIT FOR HER AILING HUSBAND TODAY AND PLANTED AN AMERICAN ELM TREE SEEDLING ON THE NORTH GROUNDS IN COMMEMORATION OF THE NATION'S BICENTENNIAL CELEBRATION.

PRESIDENT FORD HAD BEEN SCHEDULED TO PLANT THE TREE BUT HAD TO BOW OUT BECAUSE OF A SINUS INFECTION WHICH HAS FORCED HIM TO REMAIN IN THE FAMILY QUARTERS.

THE FIRST LADY LIFTED A SPADE OF DIRT TO SYMBOLICALLY PLANT THE 16-FOOT HIGH SEEDLING WHICH WAS TAKEN FROM THE JOHN QUINCY ADAMS TREE ON THE SOUTH LAWN THAT WAS PLANTED IN 1826.

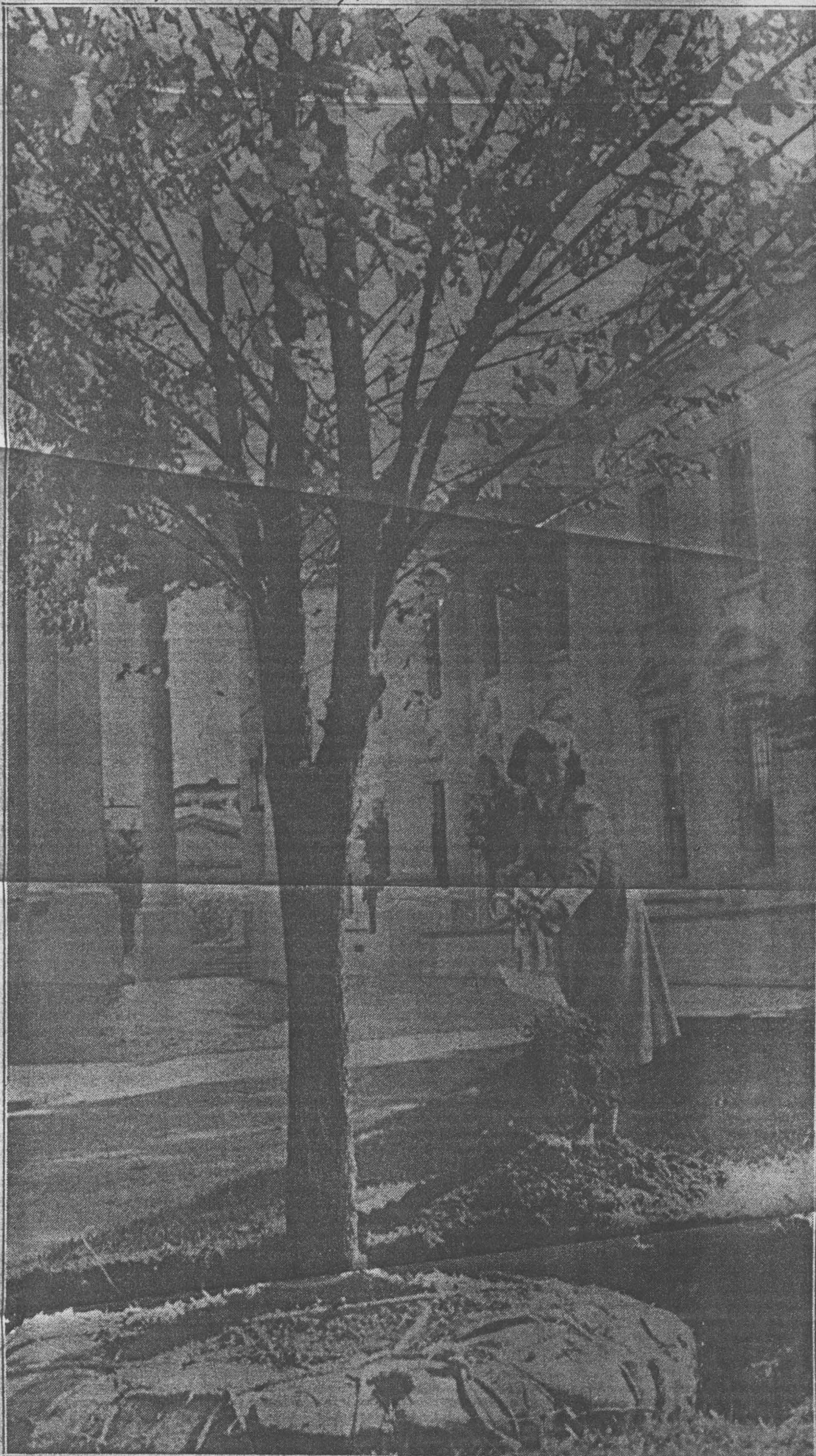
MRS. FORD MADE BRIEF REMARKS, SAYING "THERE IS A CONCERN" IN THE LAND ABOUT ENHANCING THE ENVIRONMENT.

SHE ALSO SAID THAT SHE THOUGHT IT WAS APPROPRIATE THAT IT SHOULD BE AN AMERICAN ELM. ITS STANDS 90 FEET NORTHWEST OF THE RESIDENCE.

UPI 10-20 02:07 PED

UP-093

P P



Planting the Seedling Of a Revolution

UPI Telephoto
First Lady Betty Ford sends a shovelful of earth toward base of bicentennial elm tree she helped plant on the South Lawn of the White House yesterday. She was pitching in for the President, who was suffering from a sinus cold and slight fever. Tree is a seedling from John Adams American Elm which was planted on South Lawn by President John

UP-116

(BETTY)

WASHINGTON (UPI) -- BETTY FORD GAVE A BIRTHDAY LUNCHEON TODAY AT THE SANS SOUCI RESTAURANT, A BLOCK FROM THE WHITE HOUSE, FOR HER FORMER PERSONAL ASSISTANT NANCY HOWE.

SHEILA RABB WEIDENFELD SAID MRS. FORD ALSO INVITED MRS. CLARK MACGREGOR, WIFE OF FORMER PRESIDENT RICHARD NIXON'S CAMPAIGN MANAGER AND MRS. WILLIAM WHYTE, WIFE OF A FORD MOTOR CO. EXECUTIVE WHO IS PRESIDENT FORD'S FREQUENT GOLFING COMPANION.

THE RESTAURANT IS A GATHERING SPOT FOR WASHINGTON CELEBRITIES AT LUNCHTIME.

EARLIER IN THE DAY, MRS. FORD SUBSTITUTED FOR THE PRESIDENT, WHO IS SUFFERING FROM A SINUS COLD, BY PLANTING AN AMERICAN ELM SEEDLING ON THE WHITE HOUSE GROUNDS.

MRS. WEIDENFELD SAID THAT MRS. FORD IS "LOYAL TO HER FRIENDS."

MRS. HOWE WAS RELIEVED OF HER DUTIES SOMETIME AGO.

THE FIRST LADY DOES NOT PLAN TO ACCOMPANY THE PRESIDENT WHEN HE FLIES TO PARIS FOR THE TWO-DAY INTERNATIONAL ECONOMIC SUMMIT MEETING NOV. 15-17, MRS. WEIDENFELD SAID, BECAUSE OF THE BUSINESS NATURE OF THE TRIP. MRS. FORD, HOWEVER, IS "LOOKING FORWARD" TO THE TRIP TO CHINA WITH HER HUSBAND AFTER THANKSGIVING.

UPI 10-20 03:55 PED

UP-117

R B

(STATE DINNER)

