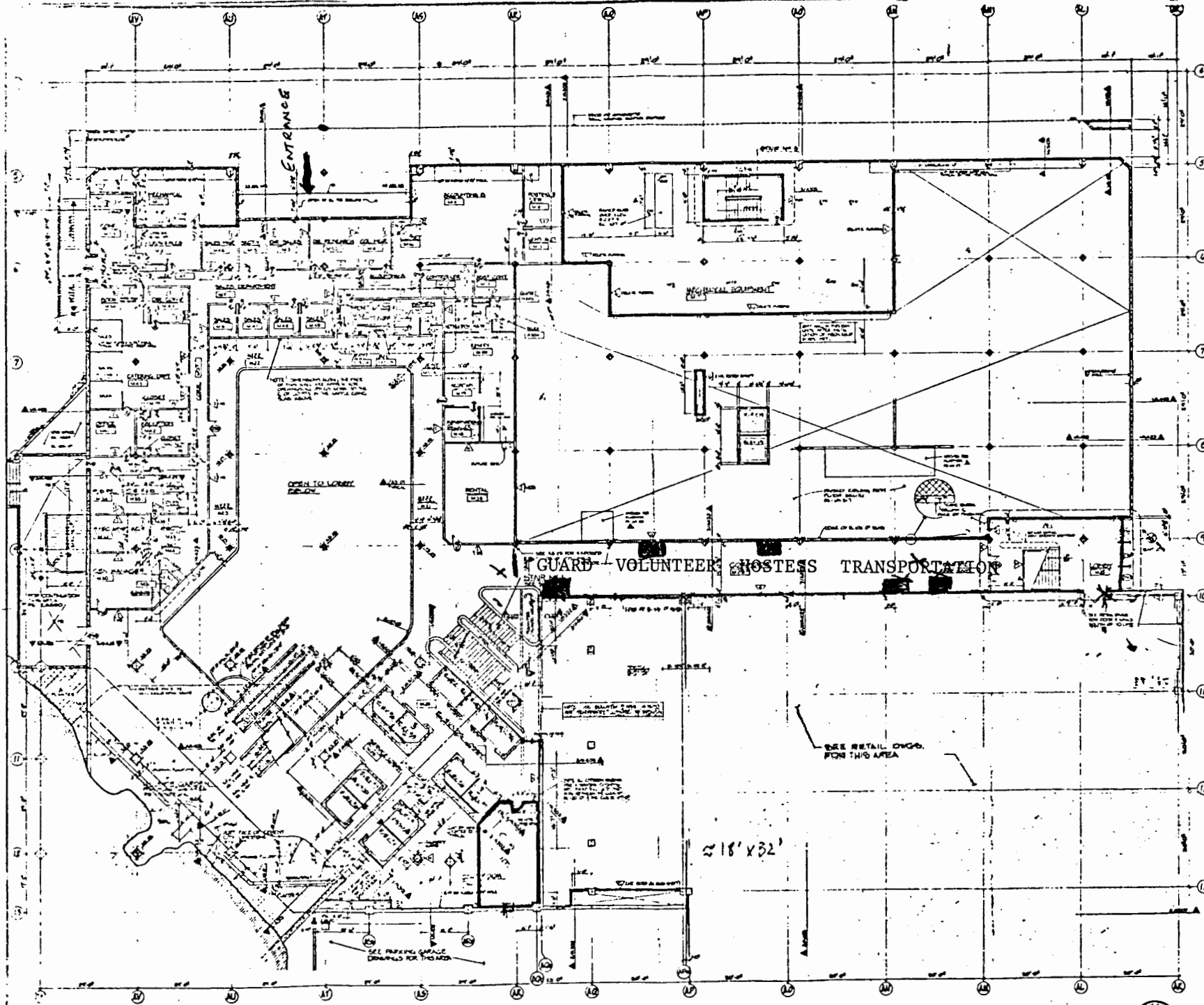


The original documents are located in Box C46, folder “Presidential Handwriting, 8/16/1976 (2)” of the Presidential Handwriting File at the Gerald R. Ford Presidential Library.

Copyright Notice

The copyright law of the United States (Title 17, United States Code) governs the making of photocopies or other reproductions of copyrighted material. Gerald Ford donated to the United States of America his copyrights in all of his unpublished writings in National Archives collections. Works prepared by U.S. Government employees as part of their official duties are in the public domain. The copyrights to materials written by other individuals or organizations are presumed to remain with them. If you think any of the information displayed in the PDF is subject to a valid copyright claim, please contact the Gerald R. Ford Presidential Library.

[8/14/72]



MEZZANINE LEVEL PLAN

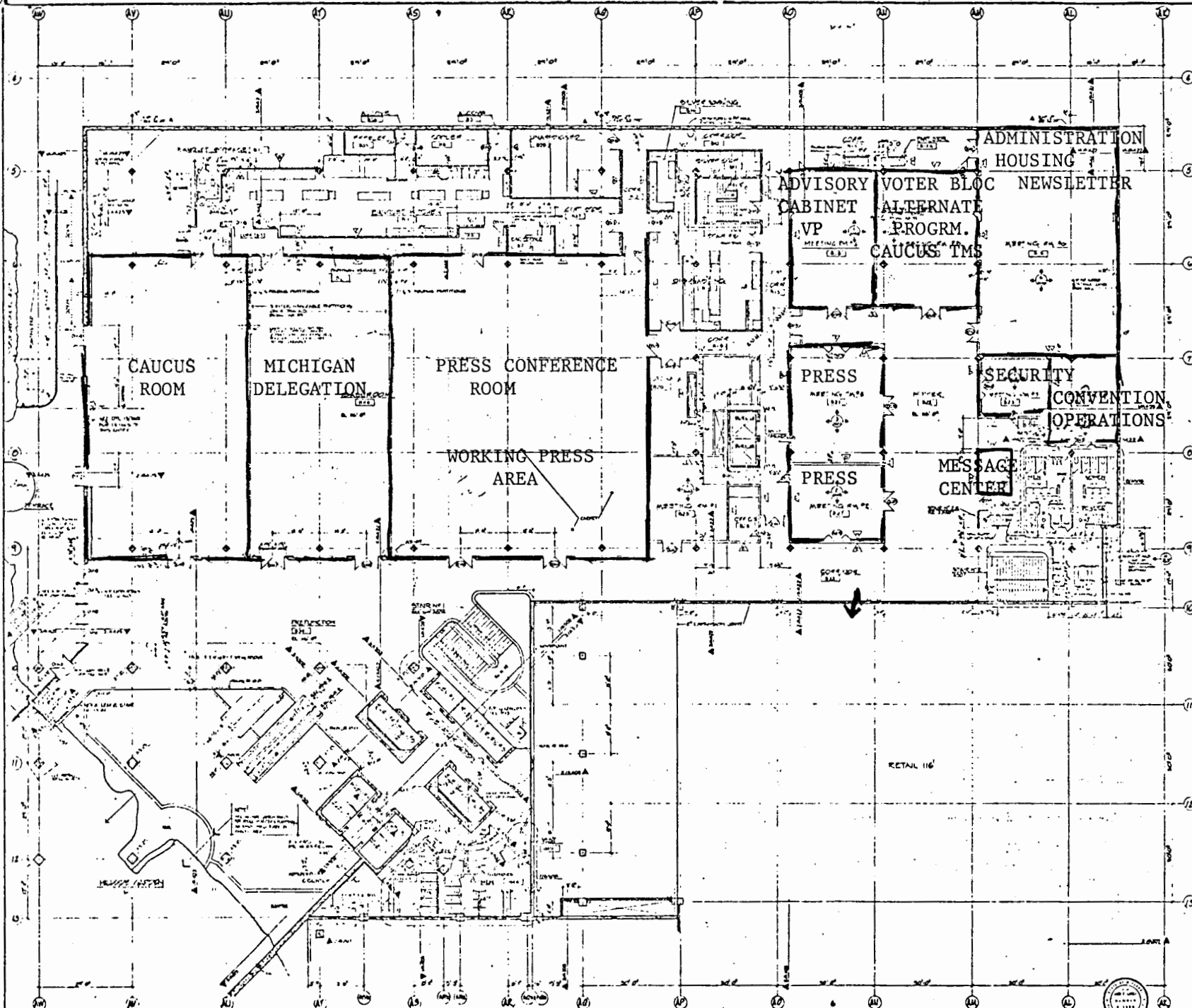
2ND FLOOR

106

CROWN CENTER HOTEL

MEZZANINE LEVEL

A505



N BALLROOM LEVEL-THIRD FLOOR PLAN

3RD FLOOR

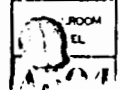
REV. P. 10

116
CROWN CENTER HOTEL

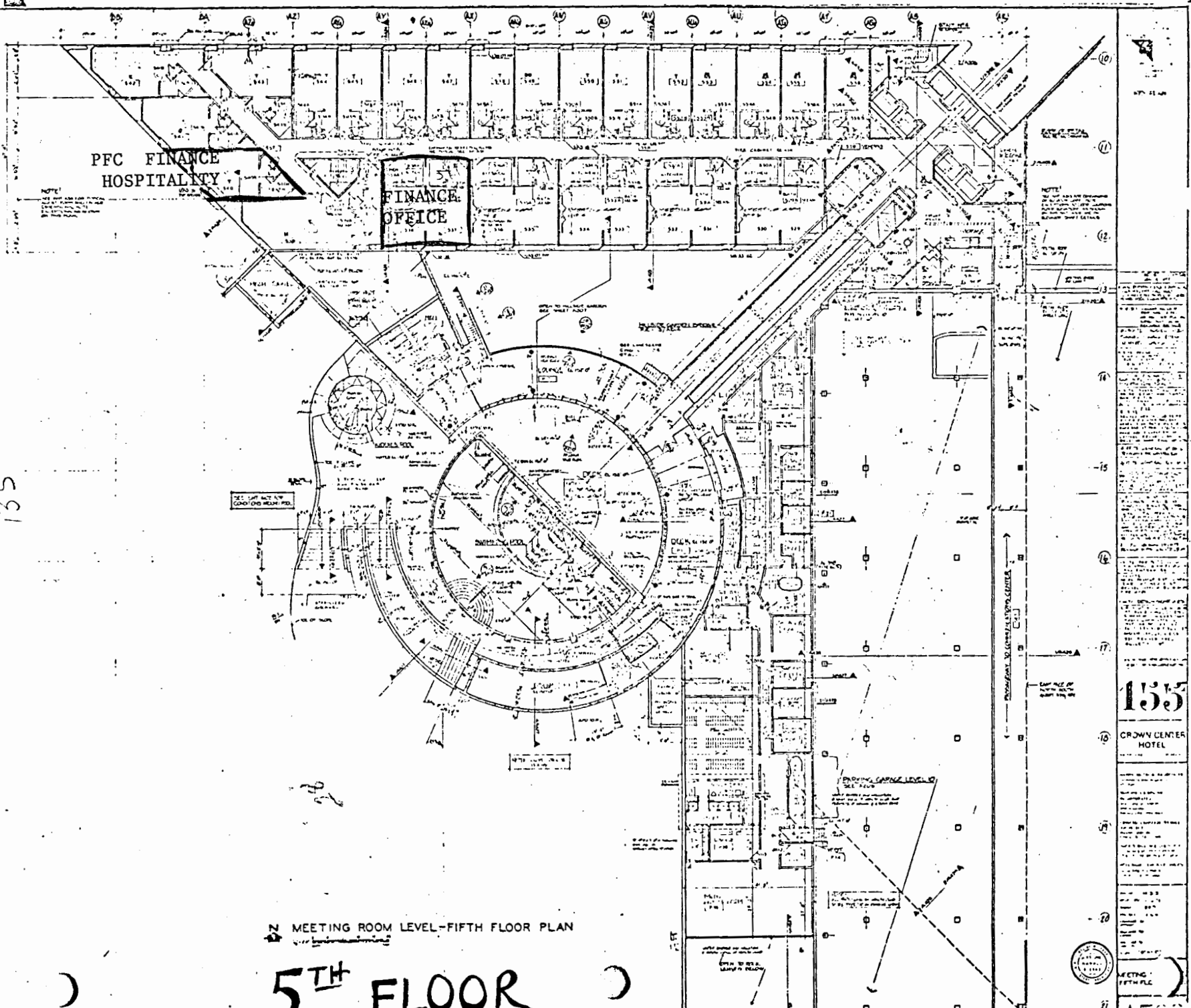
116

CROWN CENTER HOTEL

ROOM EL



10M
135



MEETING ROOM LEVEL-FIFTH FLOOR PLAN

5TH FLOOR

135

CROWN CENTER HOTEL

MEETING ROOM LEVEL-FIFTH FLOOR

DAY PLAN

DELEGATE/POLITICAL OFFICES
Rms. 1701-1729

17TH FLOOR

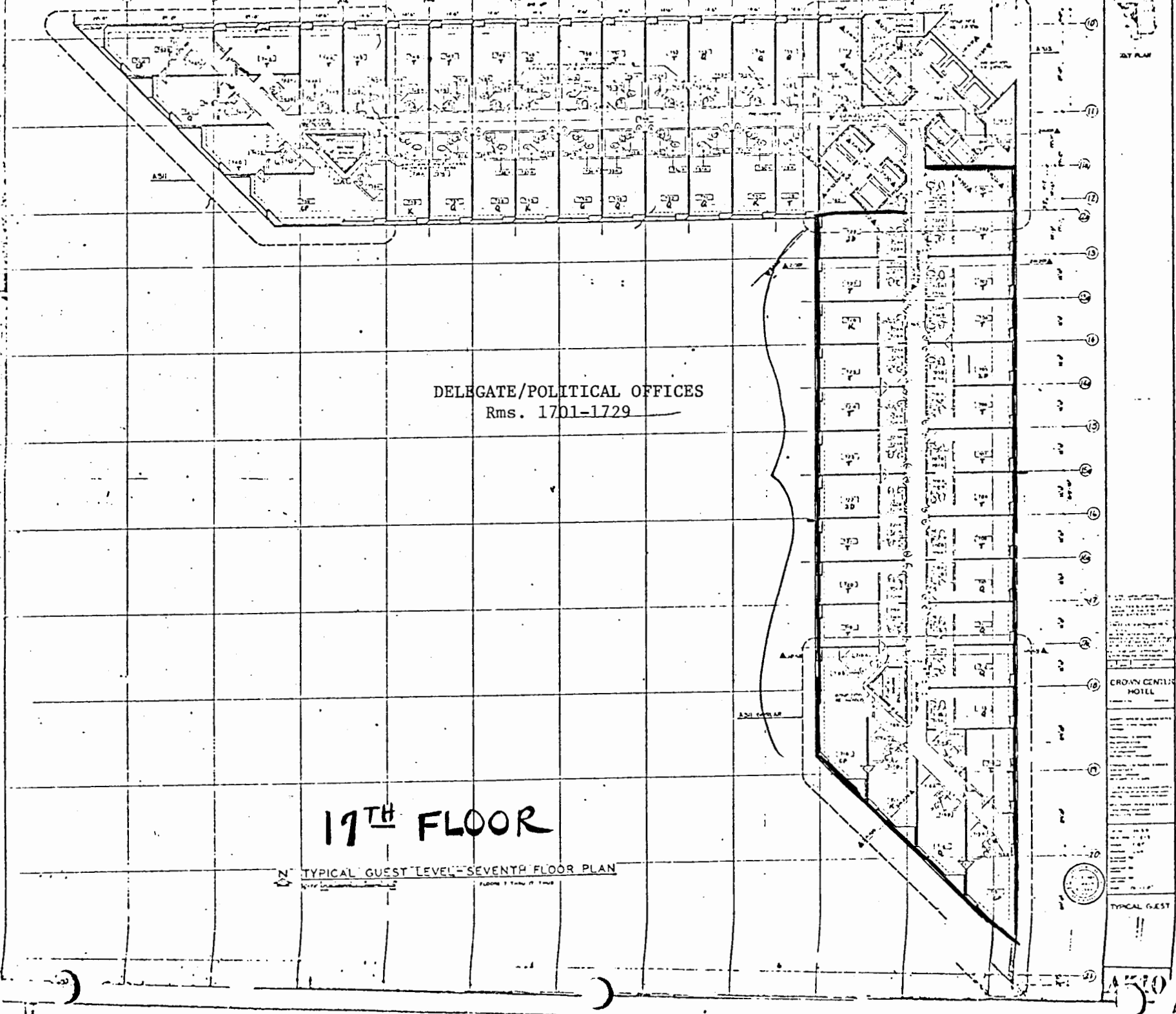
TYPICAL GUEST LEVEL - SEVENTH FLOOR PLAN

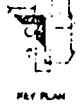
CROWN CENTRAL HOTEL

TYPICAL GUEST



170





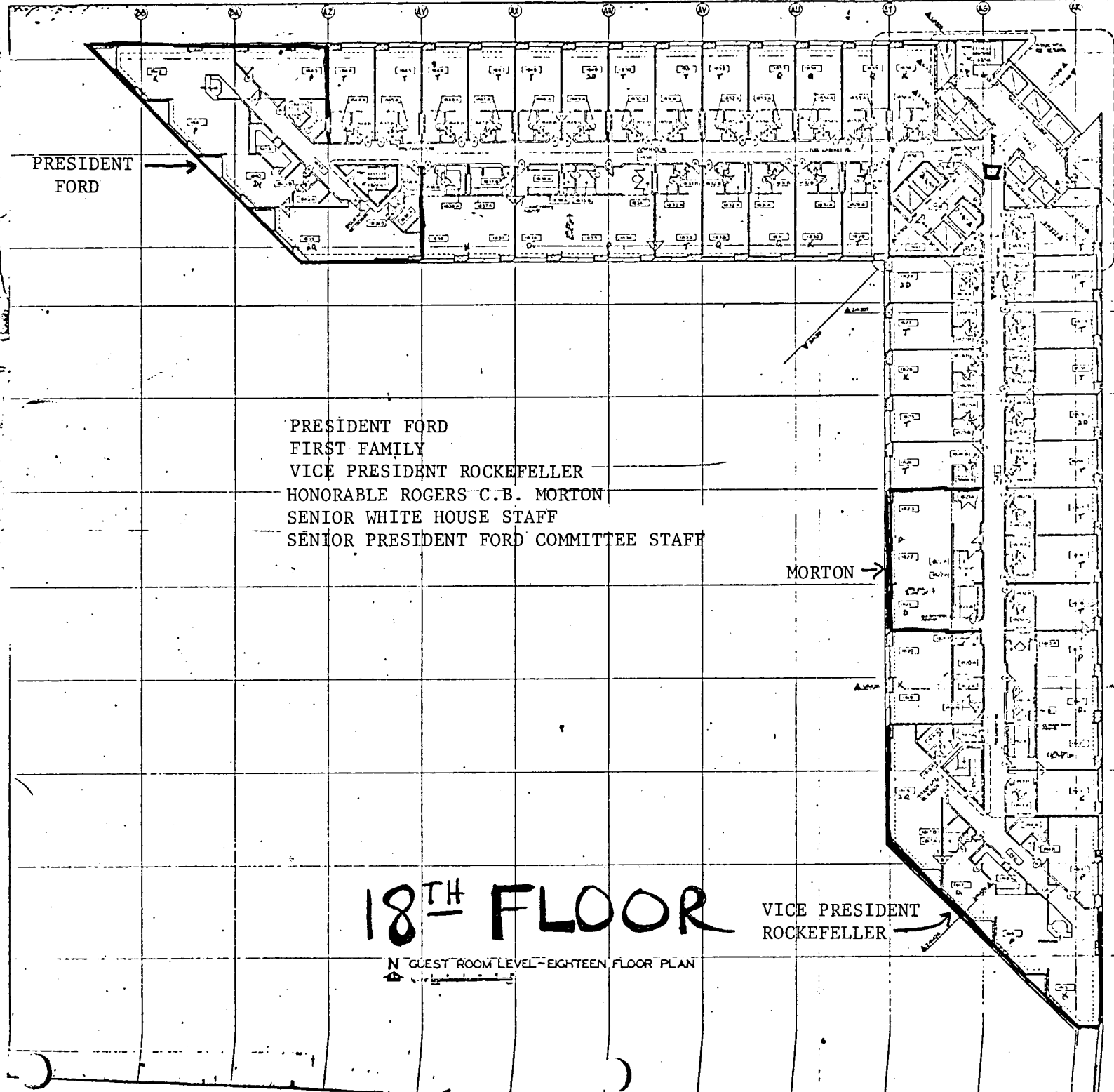
FIFTH FLOOR

2063

CROWN CENTER HOTEL

ROOMS 1-100
 ROOMS 101-200
 ROOMS 201-300
 ROOMS 301-400
 ROOMS 401-500
 ROOMS 501-600
 ROOMS 601-700
 ROOMS 701-800
 ROOMS 801-900
 ROOMS 901-1000
 ROOMS 1001-1100
 ROOMS 1101-1200
 ROOMS 1201-1300
 ROOMS 1301-1400
 ROOMS 1401-1500
 ROOMS 1501-1600
 ROOMS 1601-1700
 ROOMS 1701-1800
 ROOMS 1801-1900
 ROOMS 1901-2000
 ROOMS 2001-2100
 ROOMS 2101-2200
 ROOMS 2201-2300
 ROOMS 2301-2400
 ROOMS 2401-2500
 ROOMS 2501-2600
 ROOMS 2601-2700
 ROOMS 2701-2800
 ROOMS 2801-2900
 ROOMS 2901-3000
 ROOMS 3001-3100
 ROOMS 3101-3200
 ROOMS 3201-3300
 ROOMS 3301-3400
 ROOMS 3401-3500
 ROOMS 3501-3600
 ROOMS 3601-3700
 ROOMS 3701-3800
 ROOMS 3801-3900
 ROOMS 3901-4000
 ROOMS 4001-4100
 ROOMS 4101-4200
 ROOMS 4201-4300
 ROOMS 4301-4400
 ROOMS 4401-4500
 ROOMS 4501-4600
 ROOMS 4601-4700
 ROOMS 4701-4800
 ROOMS 4801-4900
 ROOMS 4901-5000
 ROOMS 5001-5100
 ROOMS 5101-5200
 ROOMS 5201-5300
 ROOMS 5301-5400
 ROOMS 5401-5500
 ROOMS 5501-5600
 ROOMS 5601-5700
 ROOMS 5701-5800
 ROOMS 5801-5900
 ROOMS 5901-6000
 ROOMS 6001-6100
 ROOMS 6101-6200
 ROOMS 6201-6300
 ROOMS 6301-6400
 ROOMS 6401-6500
 ROOMS 6501-6600
 ROOMS 6601-6700
 ROOMS 6701-6800
 ROOMS 6801-6900
 ROOMS 6901-7000
 ROOMS 7001-7100
 ROOMS 7101-7200
 ROOMS 7201-7300
 ROOMS 7301-7400
 ROOMS 7401-7500
 ROOMS 7501-7600
 ROOMS 7601-7700
 ROOMS 7701-7800
 ROOMS 7801-7900
 ROOMS 7901-8000
 ROOMS 8001-8100
 ROOMS 8101-8200
 ROOMS 8201-8300
 ROOMS 8301-8400
 ROOMS 8401-8500
 ROOMS 8501-8600
 ROOMS 8601-8700
 ROOMS 8701-8800
 ROOMS 8801-8900
 ROOMS 8901-9000
 ROOMS 9001-9100
 ROOMS 9101-9200
 ROOMS 9201-9300
 ROOMS 9301-9400
 ROOMS 9401-9500
 ROOMS 9501-9600
 ROOMS 9601-9700
 ROOMS 9701-9800
 ROOMS 9801-9900
 ROOMS 9901-10000

GUEST ROOM LEVEL - FIFTEEN FLOOR PLAN



PRESIDENT FORD →

PRESIDENT FORD
 FIRST FAMILY
 VICE PRESIDENT ROCKEFELLER
 HONORABLE ROGERS C.B. MORTON
 SENIOR WHITE HOUSE STAFF
 SENIOR PRESIDENT FORD COMMITTEE STAFF

MORTON →

18TH FLOOR

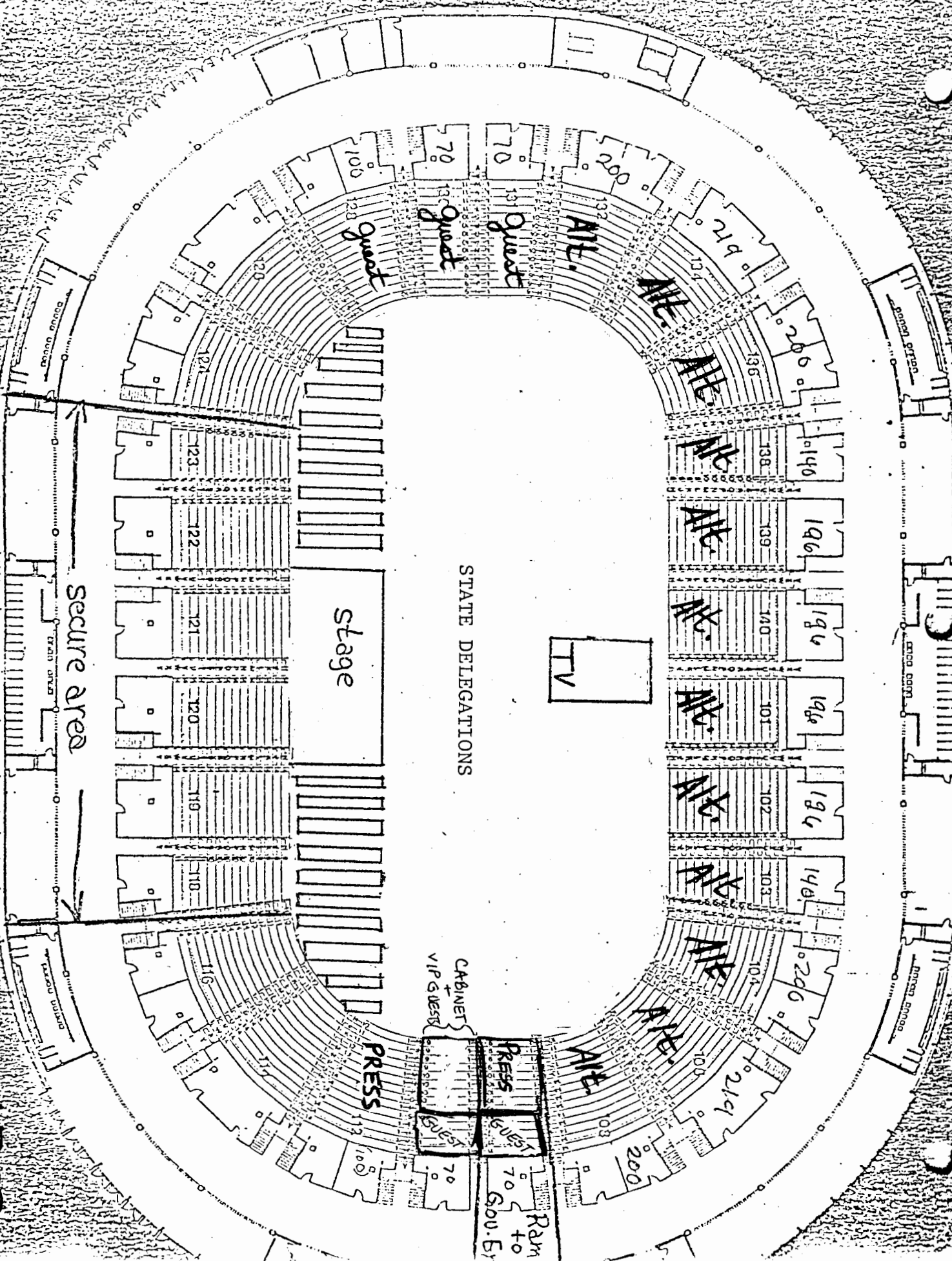
VICE PRESIDENT ROCKEFELLER →

GUEST ROOM LEVEL - EIGHTEEN FLOOR PLAN

THE PRESIDENT HAS SEEN

2ND LEVEL

KEMPER



PRESS SEATING, SOUTH HALF

on temp platforms	286
1st row perm stg	17
total	303
sec 1	48
2	143
3	112

PRESS SEATING, NORTH HALF

temp platforms	283
perm seating	14
total	297
sec 4	110
5	134
6	53
TOTAL PRESS SEATING	569
temp platforms	31
perm seating	31
TOTAL	600

SOUTH HALF FLOOR SEATING

sec 10	105
11	451
12	422
13	59
14	129
15	98(1/2)
TOT	1,264
REQ	1,245
OVER	+19

NORTH HALF FLOOR SEATING

sec 15	98(1/2)
16	129
17	59
18	422
19	444
20	118
TOT	1,270
REQ	1,244
OVER	+26

TOTAL FLOOR SEATING

N HALF	1,270
S HALF	1,264
TOT	2,534
REQ	2,489
OVER	+45

- ① AT EACH STAIR:
- A. CUT DOWN TO PER RAIL WITH 1/2" DIA. SAE PINS
 - B. PROVIDE TEMP 2"4 SPANDED EACH SIDE
 - C. FASTEN RAILS TO SPANDED WITH "U" BOLTS
 - D. REMOVE SPANDED TO FLOOR WITH 1/2" DIA. 1/2" DIA. BOLTS TO SPANDED - SHOT AND TO FLOOR
 - E. PROVIDE WOOD END CAPS ON ENDS OF CUT RAILS
 - F. REMOVE AT COMPLETION OF CONVENTION & REPLACE PER RAIL PINS - REMOVE SLEWS FOR REPAIRING PIPE
 - G. REMOVE FLOOR WHERE WOODS ARE REMOVED
 - H. THIS NOTE APPLIES AT STAIR LOCATIONS, STAIRS TO FLOOR

- NOTES**
- ① FLOOR SEATING LAYOUT IS SYMMETRICAL EACH HALF EXCEPT AS NOTED
 - ② SIGNATURES TO OPENING NEAR OF THIS LINE LOOK OVER CAMERA PLATFORMS AT ROSTRUM
 - ③ SIGNATURES TO SPEAKER VIEW OF THIS LINE ALSO LOOK OVER PRESS SEATING

**FLOOR SEATING LAYOUT
REPUBLICAN NATIONAL CONVENTION, KEMPER ARENA**

THE CITY OF KANSAS CITY, MISSOURI
SPECIAL PROJECTS DIV., DEPT. OF PUBLIC WORKS
RNC 76
SHT S1
JAMES IRELAND, ARCHITECTURAL CONSULTANT

NOT SHOWN
5/8" = 1'0"
5/8" = 1'0"
5/8" = 1'0"
5/8" = 1'0"
5/8" = 1'0"

President Ford Committee

1924 L STREET, N.W., SUITE 250, WASHINGTON, D.C. 20036 (702) 457-6470

July 12, 1976

DELEGATION HOTELS

- 1). ALAMEDA PLAZA
Wornall Road at Ward Parkway
K.C., Mo. 64116
816-756-1500
California
Reagan Headquarters
- 2). BRECKENRIDGE INN
I-435 & Front Street
K.C., Mo. 64120
816-483-9900
New Jersey
- 3). COLONIAL BEST WESTERN
3930 Rainbow Blvd.
K.C., Kansas 66103
913-236-6880
New Mexico
- 4). CONTINENTAL HOTEL
11th & Baltimore
K.C., Mo. 64105
816-421-6040
New York
- 5). CROWN CENTER
1 Pershing Road
K.C. Mo. 64108
816-474-4400
President Ford
President Ford Committee
Michigan
White House
- 6). GLENWOOD MANOR
9200 S. 69 Hwy.
Overland Park, Kansas 66212
913-649-7000
Texas
- 7). HILTON AIRPORT PLAZA INN
I-29 N.W. 112th Street
K.C. Mo. 64195
816-464-2525
Pennsylvania
- 8). HILTON PLAZA INN
1 East 45th Street
Kansas City, Mo. 64111
816-753-7400
California
Illinois
- 9). THE INN AT 610
7th & Washington
K.C., Mo. 64106
816-421-1800
Tennessee

- | | | |
|------|--|---|
| 10). | HOLIDAY INN BLUE PARKWAY
8500 E. 50 Hwy., Blue Parkway
K.C., Mo. 64133
816-353-3000 | New Hampshire |
| 11). | HOLDIAY INN DOWNTOWN
13th & Wayandotte
K.C., Mo. 64105
816-221-8800 | Minnesota
Rhode Island
Virgin Islands
Missouri
Press Galleries
Connecticut |
| 12). | HOLIDAY INN FUN WORLD
7333 Parvin Rd.
K.C., Mo. 64117
816-741-9500 | |
| 13). | HOLIDAY INN KCI
11832 Plaza Circle
K.C., Mo. 64151
816-464-2345 | Massachusetts
Alaska |
| 14). | HOLIDAY INN MUNICIPAL
1st N. & Broadway
K.C., Mo. 74195
816-842-6700 | Kansas
District of Columbia
Air Force I
Army I |
| 15). | HOLIDAY INN SPORTS COMPLEX
4011 Blue Ridge Cut-Off
K.C., Mo. 64133
816-353-5300 | North Carolina
Ohio |
| 16). | HOLIDAY INN SOUTH
11801 Blue Ridge Ext.
K.C., Mo. 64131
816-763-0600 | Nebraska |
| 17). | HOLIDAY INN GARDENS
425 Minnesota Ave.
K.C., Kansas 66101
913-621-3085 | Illinois |
| 18). | HOLIDAY INN TOWERS
424 Minnesota Ave.
K.C., Kansas 66101
913-342-6919 | Arizona
Washington |
| 19). | HOLIDAY INN LENEXA
I-35 at 95th Street
Lenexa, Kansas 66215
913-888-9400 | California |
| 20). | HOLIDAY INN OVERLAND PARK
7240 W. 63rd
Overland Park, Kansas 66222
913-262-3010 | Maine
Montana |

- 32). RAMADA INN STADIUM Oregon
5100 E. Linwood
K.C., Mo. 64128
816-861-5600
- 33). RAMADA INN SOUTH Georgia
107 County Line Road
Belton, Missouri 64102
816-331-6300
- 34). RAMADA INN EAST Mississippi
4141 S. Noland Rd.
Independence, Mo. 64055
816-833-4300
- 35). RAMADA INN SOUTHWEST Kentucky
8787 Reeder Road
Overland Park, Kansas 66214
913-888-8440
- 36). RAMADA INN LAWARENCE Utah
6th & Iowa
Lawarence, Kansas 66044
913-842-7030
- 37). RODEWAY INN NORTH Nevada
1211 Armour North Dakota
North Kansas City, Mo. 64116
816-471-3451
- 38). ROADEWAY INN SOUTH Idaho
(Hickman Mills Best Western)
115 & South 71 Hwy.
K.C., Mo. 64137
816-765-4100
- 39). RODEWAY INN OVERLAND PARK Colorado
7000 W. 108th Street Texas
Overland Park, Kansas 66211
913-383-2550
- 40). ROYAL INN KCI Guam
11828 Plaza Circle Hawaii
K.C., Mo. 64151 Puerto Rico
816-464-2525
- 41). SHERATON INN GRANDVIEW Virginia
15201 S. 71 Hwy.
Grandview, Missouri 74030
- 42). SHERATON ROYAL Ohio
9103 E. 39th Street
K.C., Mo. 64133
816-737-0200

- 43). U-SMILE STADIUM INN . South Carolina
7901 New 40 Hwy.
K.C., Mo. 64129
816-861-9400
- 44). WESTERN HILLS Western Virginia
W. 67th Street & I035
Merriam, Kansas 66202
913-432-9400
- 45). RADISSON MUEHLEBACH HOTEL RNC Headquarters
Baltimore Wyandotte & 12th
Kansas City, Mo. 64105
816-GOP-1976
- 46). KANSAS CITY MUNICIPAL AIRPORT PFC Youth Holding Center
(Kansas City Trade Mart)
Site Of President's Arrival
- 47). WORLDS OF FUN PFC Tuesday night rally
4545 Worlds of Fun Ave. site.
K.C., Mo. 64161
816-454-4545