

The original documents are located in Box C9, folder “Presidential Handwriting, 12/27/1974” of the Presidential Handwriting File at the Gerald R. Ford Presidential Library.

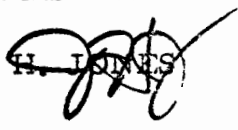
Copyright Notice

The copyright law of the United States (Title 17, United States Code) governs the making of photocopies or other reproductions of copyrighted material. Gerald Ford donated to the United States of America his copyrights in all of his unpublished writings in National Archives collections. Works prepared by U.S. Government employees as part of their official duties are in the public domain. The copyrights to materials written by other individuals or organizations are presumed to remain with them. If you think any of the information displayed in the PDF is subject to a valid copyright claim, please contact the Gerald R. Ford Presidential Library.

THE WHITE HOUSE
WASHINGTON

Date 12/27/74

TO: DON RUMSFELD

FROM: JERRY H. JONES 

For your information.

DESK IN WEST WING OVAL OFFICE

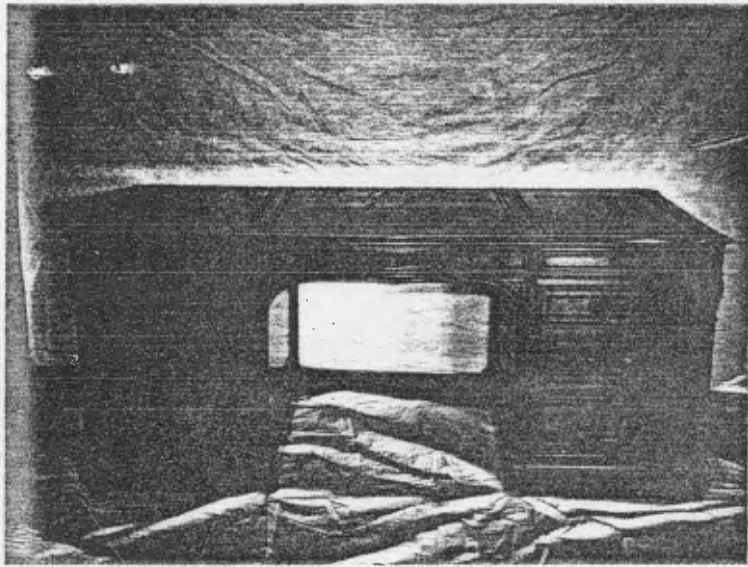
This desk is on loan from the United States Capitol. It was built in 1858 by the United States Senate for the Vice Presidential ceremonial room in the Capitol building. It was used in that room from 1858-1965. President Grant's Vice President, Henry Wilson, fell ill in this room and died on the couch next to the desk in 1875. From its use by Vice President Wilson it took the name "Wilson desk."

In 1969, President Nixon requested the desk for use in the Presidential office in the West Wing. He had used the desk while serving as Vice President.

Measurements: height-31", length-80 3/4", width-58 1/4"



Original photo returned to Curator 5/16/75



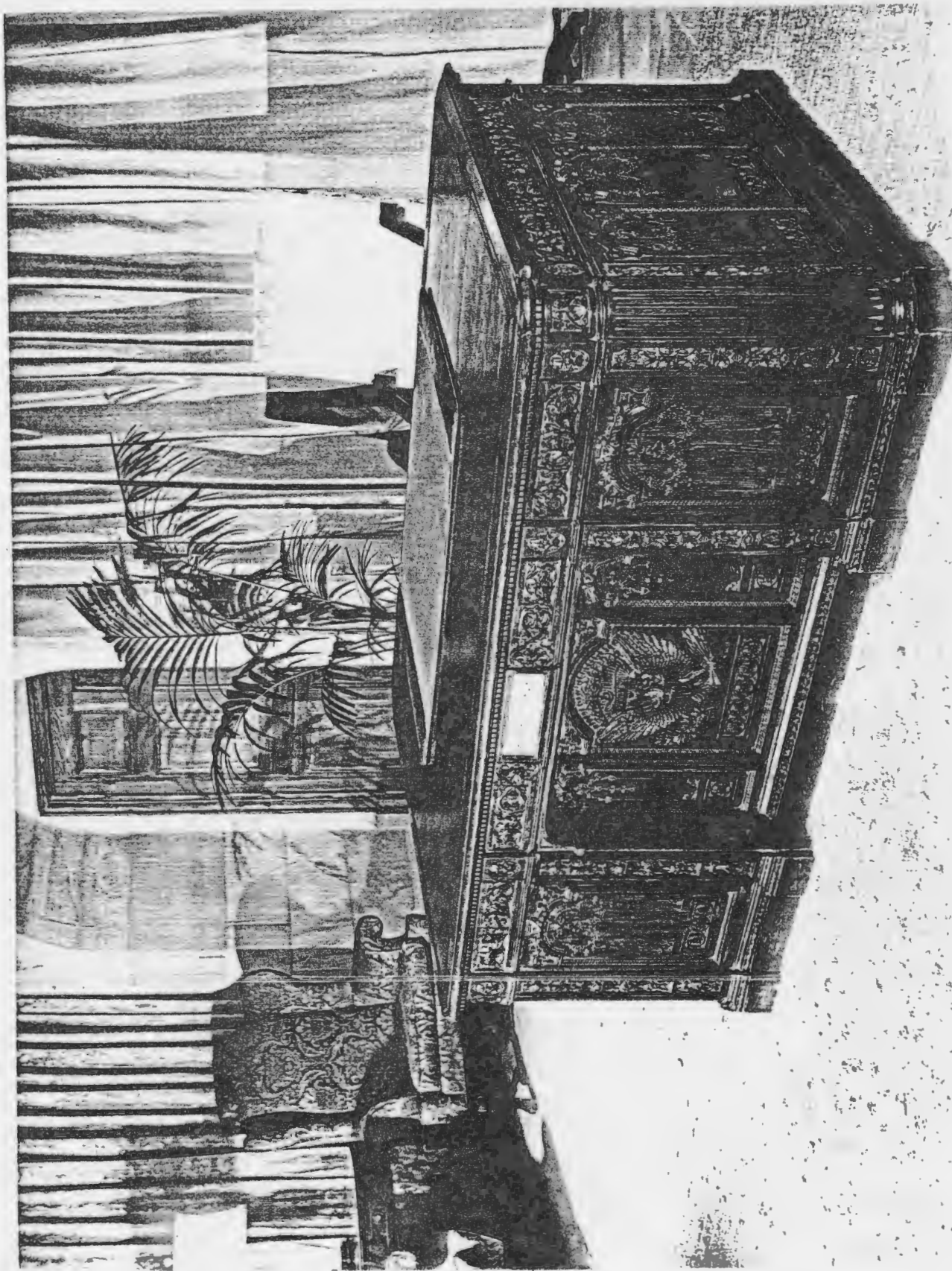
Original photo returned to Curator 5/16/75

MAHOGANY DESK

This pedestal desk, made in 1952, was a gift to the White House from John McShain, the general contractor of the White House during the Truman Renovation.

During the administrations of Presidents Truman and Eisenhower, it was located in the second floor corridor of the White House. Since 1969, it has been in San Clemente.

Measurements: height-30", length-72", depth-36"



original photo returned to Curator 5/16/75