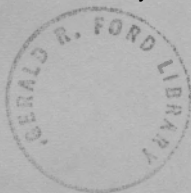


**The original documents are located in Box 19, folder “Indians - Bishop Hare Home” of the Philip Buchen Files at the Gerald R. Ford Presidential Library.**

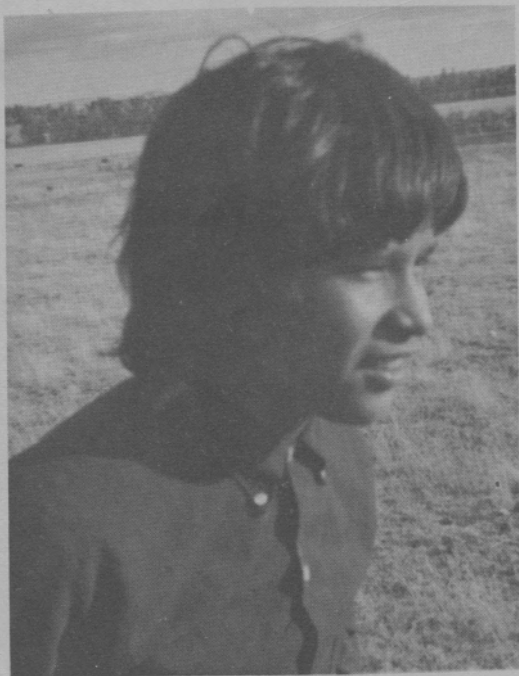
### **Copyright Notice**

The copyright law of the United States (Title 17, United States Code) governs the making of photocopies or other reproductions of copyrighted material. Gerald R. Ford donated to the United States of America his copyrights in all of his unpublished writings in National Archives collections. Works prepared by U.S. Government employees as part of their official duties are in the public domain. The copyrights to materials written by other individuals or organizations are presumed to remain with them. If you think any of the information displayed in the PDF is subject to a valid copyright claim, please contact the Gerald R. Ford Presidential Library.



**BISHOP HARE HOME**  
**Mission, South Dakota**  
**57555**

To you -- from the boys at Bishop Hare Home:



We are Indian boys from South Dakota and neighboring states who live at Bishop Hare Home in Mission, South Dakota. Our Home was founded in 1929. It is operated by the Episcopal Church and directed by Father David DeVore.





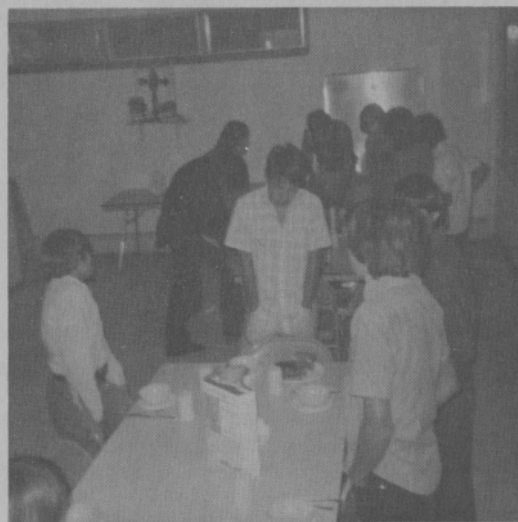
**We run a full farm operation.**

From its founding Bishop Hare Home has been dedicated to building leadership. Only boys who show promise of leadership qualities are admitted to Bishop Hare Home. Graduates of our Home are presently to be found working as priests of the Church, as well as in Education, in Government, in business, and in many other fields. The Suffragan Bishop of the diocese of South Dakota is a graduate of Bishop Hare Home. We come to Bishop Hare Home so we too can learn how to exercise leadership among our people, in the Church, and in the community.



**We get our formal schooling at the nearby Todd County Schools.**

There are about 25 of us, ranging from elementary through high school age. We get our formal schooling at the nearby Todd County Schools. In addition to school work every boy is encouraged to take part in school sponsored activities, sports, clubs, and the like. Many of our boys are not only on school teams, but regularly place highly in state athletic competitions.



**People like you provide us with gifts and donations which keep our home in operation.**

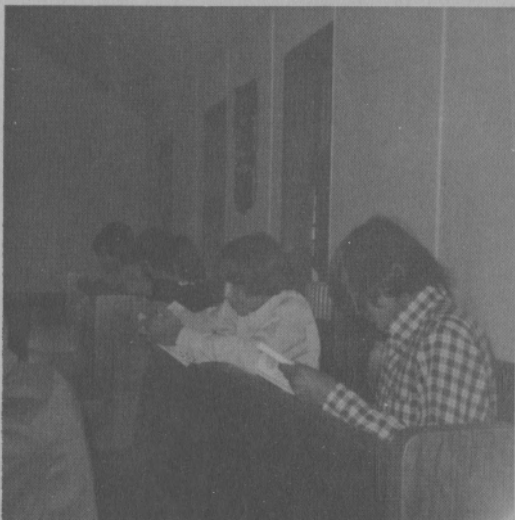
Bishop Hare Home is not government sponsored or financed in any way. People like you provide us with gifts and donations which keep our Home in operation. Any gift great or small is greatly appreciated by us; for it not only helps us, but it provides for the future so we can hope that someday our younger brothers and other boys will also be able to stay at Bishop Hare Home.

Although we are dependent on people like you to support our Home, we do try to do as much as we can to support ourselves. We know when we come to Bishop Hare Home that time which other boys would use for play after school hours is time that we will use in doing work that has to be done. Every boy has his own special area of responsibility. We run a full farm operation. We do almost all the maintenance and upkeep on our own buildings. We assist in our own food preparation. To earn extra income for the Home



We do almost all the maintenance and upkeep on our own buildings.

we saddle-break horses for neighboring ranchers. We even build our own furniture. Some of the money given to us is used to purchase the tools and materials we use for these projects.



Our community worship is an important part of every day.

Bishop Hare Home operates under the lordship of Jesus Christ, and so our community

worship is an important part of every day. Every day begins with a worship service in our chapel. On Wednesdays we arise extra early in order to celebrate the Holy Eucharist. On Sundays we participate in the parish worship at

We Could  
Add  
A Stamp  
But Every  
Cent  
Counts

Friend of Bishop Hare Home

BISHOP HARE HOME

MISSION SOUTH DAKOTA 57555

of South Dakota. The Bishop of South Dakota, Walter H. Jones, is chairman of the board.

Our families pay something of the cost of sending us to Bishop Hare Home; and as we have mentioned, we try to help ourselves in any

worship is an important part of every day. Every day begins with a worship service in our chapel. On Wednesdays we arise extra early in order to celebrate the Holy Eucharist. On Sundays we participate in the parish worship at \_\_\_\_\_ of Mission.

May I suggest the following person as a possible future Friend of Bishop Hare Home.

Name \_\_\_\_\_

Street \_\_\_\_\_

City and State \_\_\_\_\_

Postal Zone \_\_\_\_\_

\_\_\_\_ You may tell them I suggested their name.

\_\_\_\_ Please do not use my name.

COUNT ME AS A FRIEND OF BISHOP HARE HOME

I enclose

Name \_\_\_\_\_

Street \_\_\_\_\_

City and State \_\_\_\_\_

THIS GIFT IS AN ALLOWABLE INCOME TAX DEDUCTION.

Our community worship is an important part of every day.

Bishop Hare Home operates under the lordship of Jesus Christ, and so our community

\_\_\_\_\_ of  
Episcopalians of Indian ancestry in the Diocese of South Dakota. The Bishop of South Dakota, Walter H. Jones, is chairman of the board.

Our families pay something of the cost of sending us to Bishop Hare Home; and as we have mentioned, we try to help ourselves in any



worship is an important part of every day. Every day begins with a worship service in our chapel. On Wednesdays we arise extra early in order to celebrate the Holy Eucharist. On Sundays we participate in the parish worship at Trinity Episcopal Church in the town of Mission. We have organized Bible study regularly each week. We even travel to other churches throughout South Dakota, and out of South Dakota, to tell the story of Bishop Hare Home to other people, and on occasion to lead an evensong service Bishop Hare Home style! In our daily lives we try to influence other people, especially young people since we are young ourselves, to discover the difference a relationship with Jesus Christ can make in their lives.



All members of our Board of Directors are elected by Niobrara Convocation.

"Self-determination" is talked about a lot these days, but it is nothing new to the operation of Bishop Hare Home. All members of the Board of Directors for the Home are elected by Niobrara Convocation. This Convocation is the annual meeting for prayer and fellowship of Episcopalians of Indian ancestry in the Diocese of South Dakota. The Bishop of South Dakota, Walter H. Jones, is chairman of the board.

Our community worship is an important part of every day.

Bishop Hare Home operates under the lordship of Jesus Christ, and so our community

Our families pay something of the cost of sending us to Bishop Hare Home; and as we have mentioned, we try to help ourselves in any

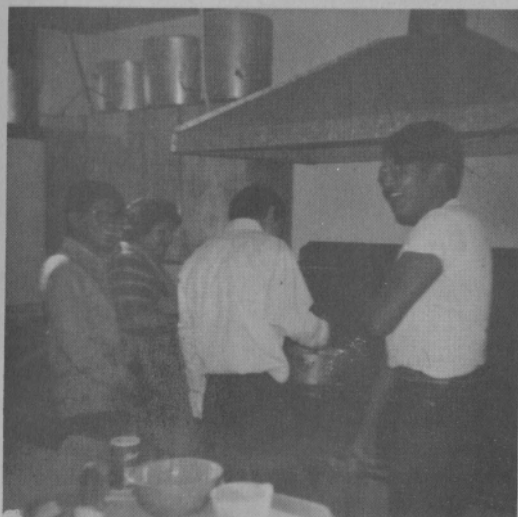




Your gift or pledge is essential to the maintenance of our Home.

way we can. But the remainder must be provided for by gifts from persons who want to see our work continue and expand. Your gift or pledge is essential to the maintenance of our Home. You may be certain that every gift you give will be put to good use by one of the finest, and oldest, homes for Indian boys in the Nation--a home that presently is helping us to grow into young manhood.

Thanks  
For  
Helping  
Us!



**Bishop Hare Home**

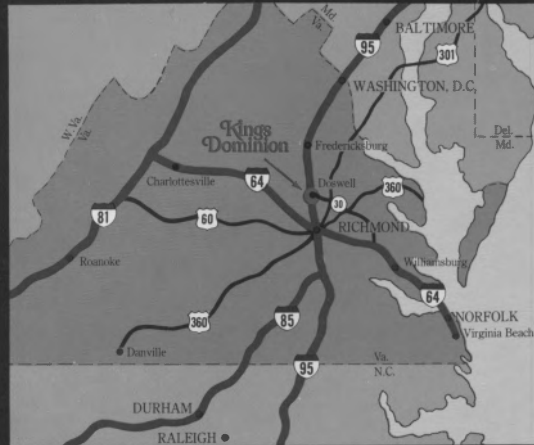
Mission, South Dakota 57555

Non-profit  
Organization  
Permit No. 2

**To:**

**THIRD  
CLASS**

**The Largest Family Entertainment  
Center North of Florida.**



## Location

Kings Dominion is 23 miles north of Richmond and 75 miles south of Washington on I-95 at the Doswell exit. We're only 65 miles from historic Williamsburg, 105 miles from Norfolk and 130 miles from Baltimore.

## Hours

Kings Dominion is open daily 10 AM to 10 PM from Memorial Day through Labor Day. The entire park, including Lion Country Safari, is also open weekends only from 10 to 10 in May and in the fall. In addition, the Lion Country Safari section of Kings Dominion will be open daily from 10 AM to sunset in the fall.

## Admission

It's one of the greatest recreational buys anywhere. A full day of excitement, fun and fantasy—and the \$7.50 one-price admission covers it all, including rides, attractions and live entertainment (You can ride all the rides and see all the shows as often as you like). The only things *not* included are food, souvenirs, and the Lion Country Safari monorail. When the full park is in operation, the monorail ride is an additional \$1.00. Children under 3 are admitted free.

*Prices and hours are subject to change without notice.*

## Group Rates

For special school and group rates write Kings Group Sales Department-B, P.O. Box 166, Ashland, Virginia 23005. Or phone (804) 798-4761. In Virginia dial toll-free: 1-800-552-9930.



# Kings Dominion

## The Giant Kingdom of Fun and Make-Believe



**North of Richmond, Virginia on I-95**



ogi Bear and Scooby Doo are your hosts. They'll lead you down an International Street where the waters dance and the clowns play trombones. Live elephants, lions and giraffes are right around the bend—so hop aboard the Lion Country monorail. And you've only begun. The dolphins can't wait to show you their stuff. (Just walk right through the whale's mouth and into the giant aquatheater.) And *you* can't wait to board the train headed for the

backwoods of Old Virginia, where the hillbillies are still feudin' and Ida Lou is still lookin' for her man.

You're about to spend a day at Kings Dominion, the \$50-million family entertainment center where the mushrooms sing and Virginia, Broadway, Europe, Africa and the South Seas all come to life.

Kings Dominion. It's a grown-up world of make-believe with all-new rides and thousands of all-new sights. It's the best thing that ever happened to a Virginia vacation—and the best way to spend a day in the Old Dominion.

Kings Dominion. With streets of magic, rides of laughter and a tower of dreams.





**K**ings Dominion. From start to finish, it's a lot more than you ever thought it would be.

First of all, it's bigger. More than 1300 acres of park, safari land and wide-open spaces. It's more inviting, too. More exciting. You can feel it the

second you enter any one of the five theme areas at the heart of this giant entertainment complex.

Take International Street, the big European

boulevard that stretches around magnificent, dancing fountains and reaches out to the base of the 332-foot Eiffel Tower. (And be sure to take in the tower's 1,000-square-mile view—just hop aboard one of the high-speed twin elevators for a ride to the top.) Later, in the bustle of the German toy store and the excitement of the Italian emporium, you'll sample some of the most delightful Continental fare this side of the Atlantic.

Or take the kids to the Happy Land of Hanna-Barbera, where they'll bounce on the Flintstone Boulder Bumpers and hike through a magical, million-dollar cave where a familiar bear is hiding

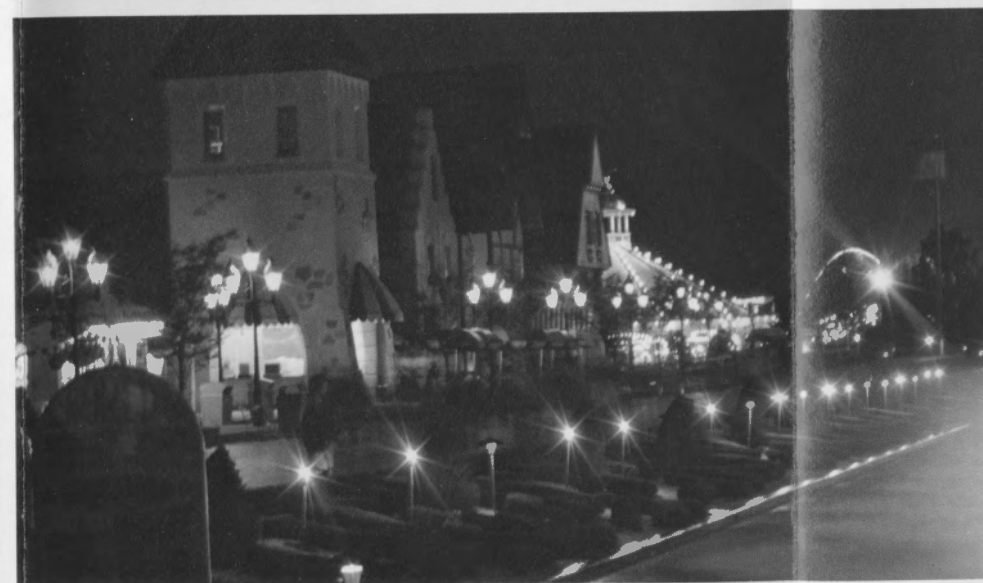
a thousand "stolen" picnic baskets. This is the land of fantasy and fun—with Scooby's Magical Mansion, gentle rides for younger riders, and a dolphin show for everyone.

Next it's Old Virginia—and don't miss the bluegrass music show. Splash down on the Shenandoah Lumber Company Log Flume. Boo the villain in the live melodrama. And ride the antique cars to yesterday. It's all really special—*especially* "Give My Regards to Broadway," a rousing Broadway revue in the huge plantation theater.

Now hop the Skyride to Coney Island, the turn-of-the-century amusement park at the heart of Kings

Dominion. Ride the carousel, walk the mall and tackle the Monster, one of the wildest rides you've ever seen. And here it is: the Rebel Yell, Kings Dominion's giant 60-mph-plus *double* roller coaster. There isn't another quite like it in the world. If you love coasters, this is *it*.

Ride the "Yell" again and again, but save time for the monorail. Step on board and—suddenly—you're on safari in Africa. Huge lions pass within inches. Rhinos, elephants, wildebeests and giraffes watch your every move. Real, uncaged, untamed animals inhabit the wilds of Lion Country Safari—and it's a jungle out there.





**W**hen should you come to Kings Dominion? In the morning, when the roller coaster is making its first steep climb and Yogi is shaking off a good night's sleep. When the lions are restless and the Banana Splits most mischievous.

You'll want to have lunch here, because lunch means a dozen different treats—from hot dogs to nutty bananas to giant sandwiches from our double-deck deli. And—surprise!—there's more: Belgian waffles, Louisiana shrimp, Virginia fried chicken—and on and on. For lunch *and* dinner. And you'll want to be here at midday, when the air is cooled by the giant fountains in the lake and on International Street. And you'll want to enjoy a Kings Dominion afternoon—when the carousel, the bumper cars and

# Kings Dominion

**Streets of magic, rides of laughter and a tower of dreams.**

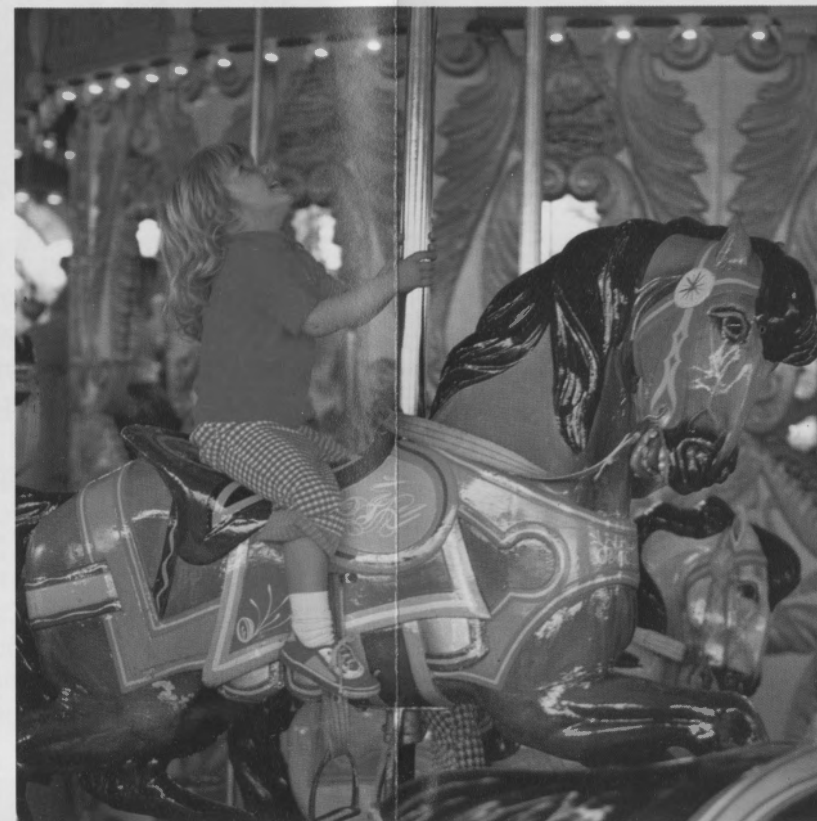
the flying Jamestown boats are swaying and turning to their own happy melodies.

But whenever you come, you must stay for evening. You can do it all at night. It's a special time when we really shoot the works. Fireworks—thousands of dollars worth up in lights every night. Twilight at Kings Dominion is when this whole magical world takes on a certain kind of romance. When the music slows to a new tempo and the strolling minstrels, the big bands and the barbershop quartets—when *all* the 14 different acts and shows—play background to a special feeling that may exist nowhere else. Every night the skydivers come down, the giant hot-air balloon goes up, and stunt pilots in antique planes turn the world upside down.

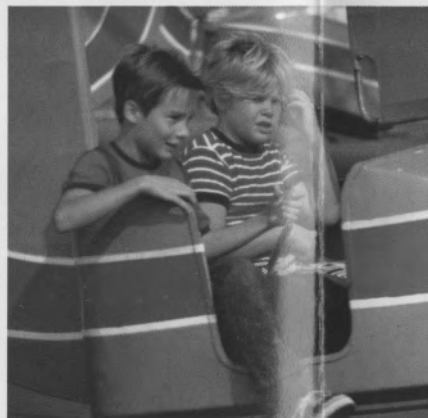
It's all designed to put you in the mood. For fun. For laughter. And maybe even for falling in love.

When should you come to Kings Dominion? Come now. For the day.

Because we know you'll want to come back again.









# Welcome to Washington, D.C.

**CAPITOL**—Probably the most famous building in the New World, the Capitol is the meeting place of the U.S. Congress. It is also one of America's most historic buildings, each addition denoting a significant period in American history. The original components were finished in 1800, the year the government moved from Philadelphia to Washington. The British burned the interior in 1814. Final major addition was the 4,500 ton cast-iron dome, completed in 1865.

# Welcome to Washington, D.C.

**"The Spirit of '76**  
lives in  
Washington, D.C."

*Washington:* the Living City, the city which symbolizes the ideas of our nation's founders, the city which keeps those ideas alive.

*Washington:* the home of the Declaration of Independence, the Constitution, the Bill of Rights, the pandas, the government.

The boulevards are wide and tree-lined, circles of greenery mark intersections, buildings are a comfortable height, and history is an everyday happening, just as it has been since the government came in 1800.

Every day, people in Washington alter mankind's fate upon this earth. Some days they change it greatly; some days only a little. And only history can tell which.

What happens in Washington affects everybody on earth.

*Washington:* the most important city. Ever.

Shouldn't you and your family know more than a little about it?



WELCOME

VISITORS

Washington Area Convention and Visitors Bureau  
1129 20th Street, N.W., Washington, D.C. 20036

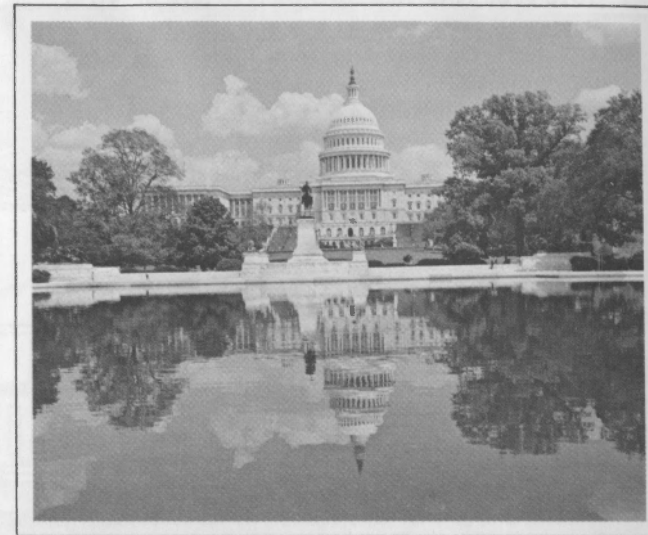
Washington Area Convention and Visitors Bureau  
1129 20th Street, N.W., Washington, D.C. 20036



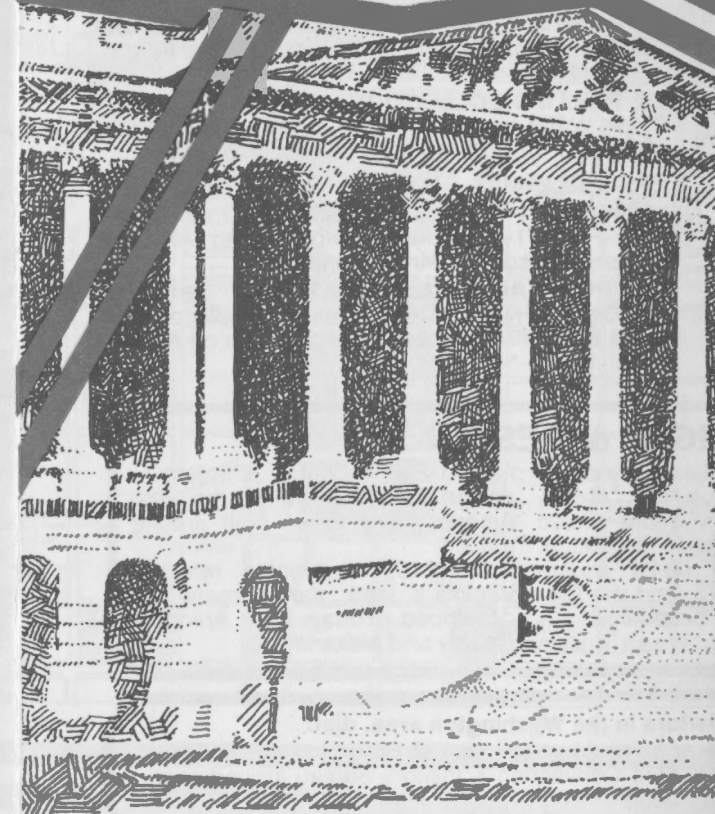
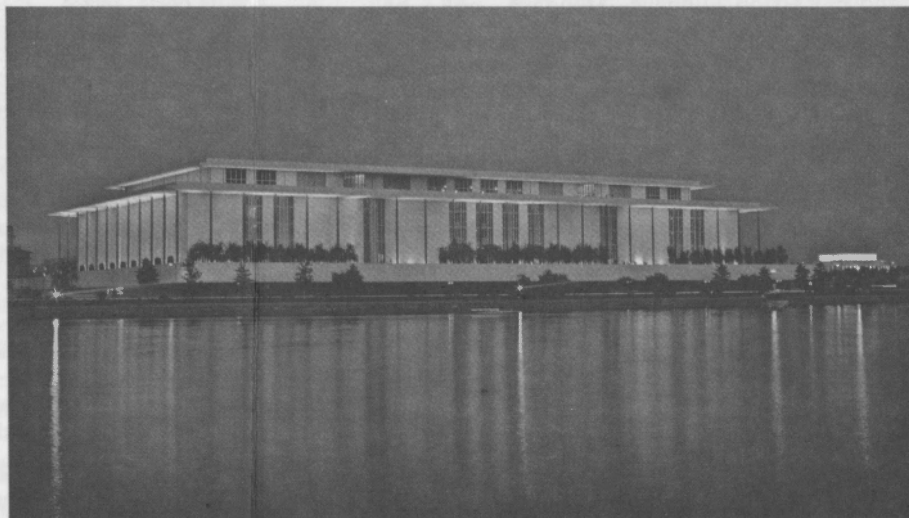
**MOUNT VERNON**—Plantation home of George Washington is one of the world's most-often-visited shrines. It is completely restored, historically magnificent and its view of the Potomac River is overwhelming.



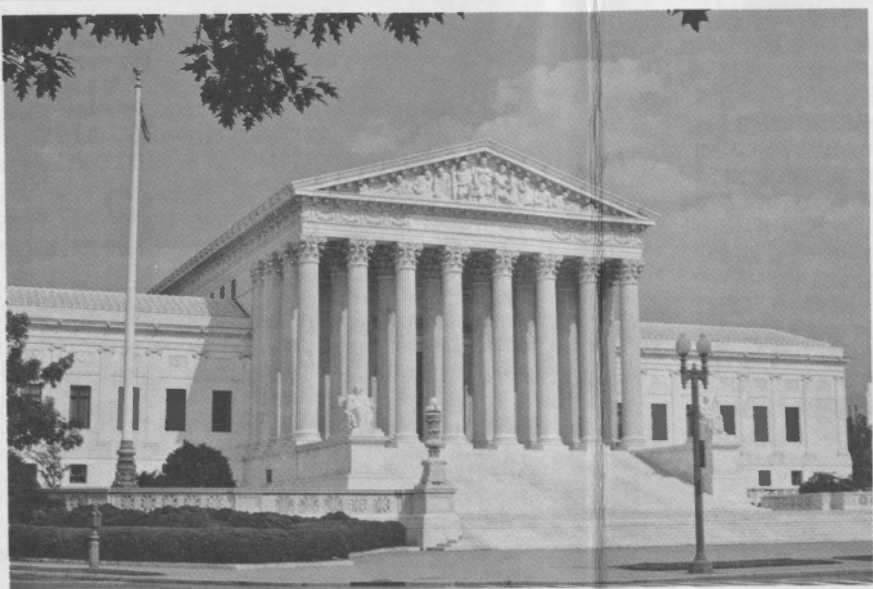
**JEFFERSON MEMORIAL**—Thomas Jefferson, the nation's third president and author of the Declaration of Independence is remembered by this marble shrine on the colorful Tidal Basin. Jefferson, probably the most versatile president the U.S. ever had, was an accomplished architect and his concepts are incorporated into his memorial. President Franklin D. Roosevelt dedicated the memorial on the 200th anniversary of Jefferson's birth, April 13, 1943.



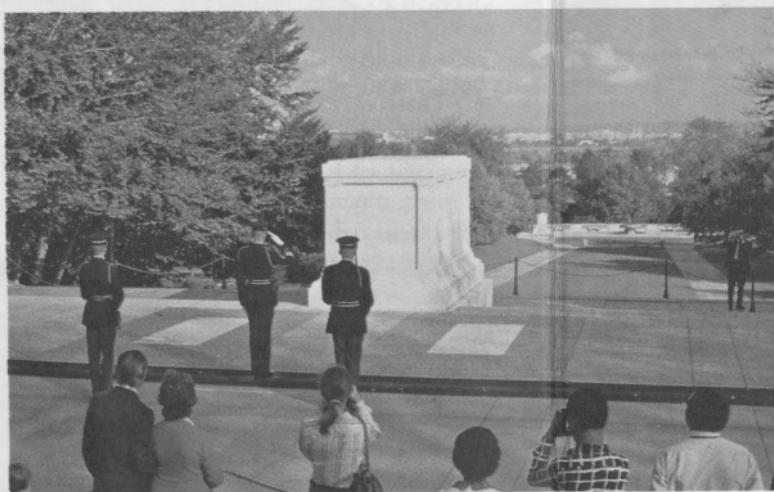
**KENNEDY CENTER**—Nation's memorial, honoring President John F. Kennedy, is the world's entertainment palace, housing a concert hall, opera house, dramatic theater and film theater. It officially opened Sept. 7, 1971 when Leonard Bernstein's "Mass" was presented in the opera house.



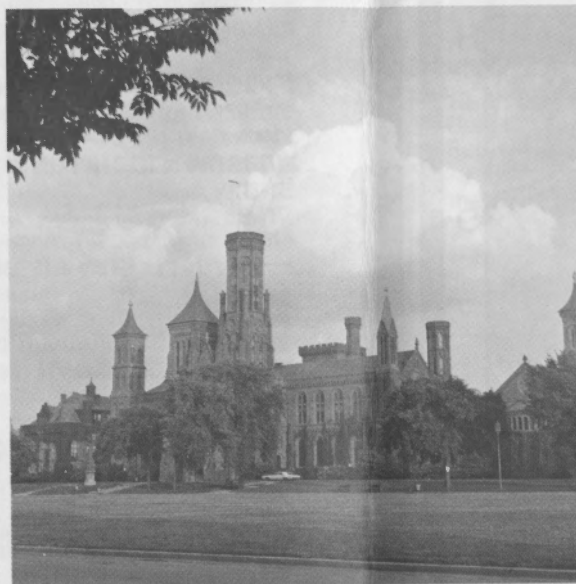




**SUPREME COURT**—The Judiciary Branch of the federal government was the last to get its own building. The Supreme Court moved into this striking white marble structure in 1935. Prior, it had met in the Capitol. Court cases are open to the public.



**TOMB OF THE UNKNOWN SOLDIER**—Fifty-ton block of white marble in Arlington National Cemetery marks the tomb of an unknown World War I soldier. His body is flanked by those of unknown soldiers of the Korean War and World War II. The Tomb is guarded continuously and guards are changed ceremoniously every half hour.

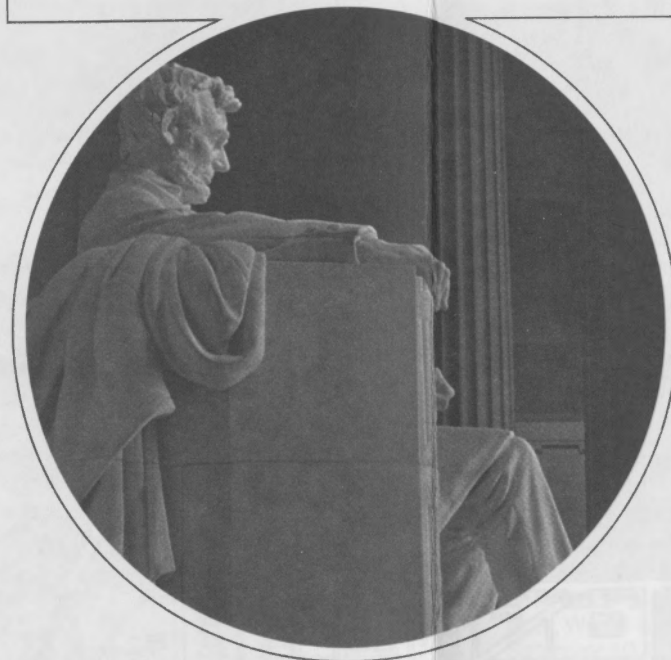


**SMITHSONIAN INSTITUTION**—The world's greatest museum is composed of several spacious modern buildings, but this historic red sandstone "castle" best symbolizes the Smithsonian. The building was completed in 1846. Other Smithsonian museums, clustered on and near the Mall, display the moon rock, the Hope Diamond, the first airplane, the Spirit of St. Louis and a few million other items.

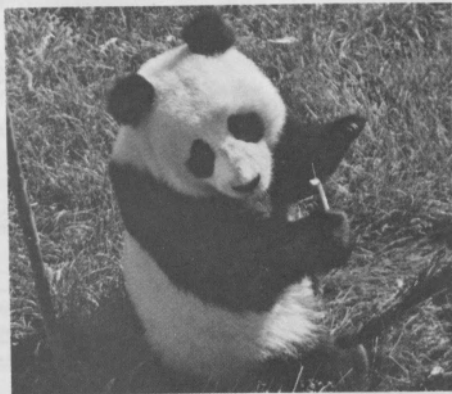
**LINCOLN MEMORIAL** — The martyred 16th president is remembered by this massive structure, resembling a Greek temple. The site was chosen in 1912 and the memorial completed in 1922. The land upon which the memorial stands was once part of the Potomac River, or was a mosquito-infested bog, depending upon the height of the river.



**LINCOLN STATUE**—Daniel Chester French's colossal statue of Abraham Lincoln is the most beloved statue in the Nation's Capital, perhaps the nation. The statue seems to look out upon the city, symbol of the union Lincoln preserved. Virginia, citadel of the Confederacy, is directly behind the statue, across the Potomac River.



**PANDAS**—The Chinese gave Ling-Ling and Hsing-Hsing to the American people in 1972 and the "teddy bears" have won the hearts of the nation.



**WHITE HOUSE**—The most famous address in America is 1600 Pennsylvania Avenue NW, site of the old building once known as "the President's Palace." It was first occupied in 1800 by John Adams, second president of the U.S. Every president since has lived there. The invading British army burned the interior out of the building in 1814, and when a coat of white paint was applied following restoration, wags christened the palace "the White House."



**WASHINGTON MONUMENT**—Nation's monument to its first president, George Washington, dominates the Washington, D.C., skyline. At 555 feet, it's the city's tallest building. Its observation platform offers spectacular view. The monument was dedicated July 4, 1848, but work stopped in 1859 when funds ran out. Stump of the monument (note change of color one-third of the way up) stood in disgrace until 1876 when enough money was raised to finish the construction. Work was complete in 1884 and the monument opened to the public in 1888.



# Washington, D.C.

*"Where the Fun is Free"*

*Everything from African Art to Zoological Park*

You and every other American own a sizable portion of Washington. Thus, you can expect free admission to your federal properties.

This is a city where the best things are free, where a dime can buy you a storybook or civics book vacation. The dime? That's to pay for your elevator ride to the top of the Washington Monument. But the 898 steps make the dime ride the best bargain in town. Your children ride free.

• **AFRICAN ART, MUSEUM OF**—316 A St., N.E. 11 a.m.-5 p.m. Monday thru Friday. 12-5 p.m. weekends. 547-7424.

• **9-E AIR AND SPACE BUILDING** (Smithsonian) 10th St. and Independence Ave. S.W. Simulated trip to moon. 10-5:30 daily. Open until 9 p.m. in summer. H\*\*

• **ALEXANDRIA**—Eight miles south of Washington over the beautiful George Washington Memorial Parkway. Christ Church, George Washington Masonic National Memorial, Gadsby's Tavern, Carlyle House. Metrobus coaches leave 12th and Pennsylvania Ave., N.W., every 10 minutes.

• **7-D AQUARIUM, NATIONAL**—Basement of Dept. of Commerce, 14th and Constitution Ave., N.W. 967-2825. Daily 9 a.m.-5 p.m. Over 2,000 specimens of fresh water and marine animals representing almost 300 species. Displayed in 68 aquariums. Sharks, octopus, exotic tropical fish and rare endangered species, etc. HP\*\*

• **ARBORETUM, NATIONAL**—Bladensburg Rd. & R St., N.E. 399-5400. 415 acres of flowering trees and shrubs. April-October, Monday thru Friday 8 a.m.-7 p.m. Saturday and Sunday 10 a.m.-7 p.m.; November-March, Monday thru Friday 8 a.m.-5 p.m.; Saturday and Sunday 10 a.m.-5 p.m. HP\*\*

• **9-D ARCHIVES, NATIONAL**—7th and Constitution Ave., N.W. WO 3-6404. Declaration of Independence, Constitution. Monday thru Saturday, 9 a.m.-10 p.m.; Sunday 1 p.m.-10 p.m. Call 962-2000 for recorded information on exhibits. H.

• **ARLINGTON HOUSE**—Arlington Cemetery. 557-3153. Daily, October thru March, 9:30-4:30; April thru September, 9:30-6. 50¢ over 15 years.

• **ARLINGTON NATIONAL CEMETERY**—692-9875. Daily, November thru March, 8 a.m.-5 p.m. April thru October 8 a.m.-7 p.m. Tomb of the Unknown Soldier, Amphitheater, Arlington House, graves of John F. Kennedy and William Howard Taft. Changing of the guard at the Tomb of the Unknown Soldier every hour. HP.

• **9-E ARTS AND INDUSTRIES BUILDING** (Smithsonian)—9th St. and Jefferson S.W.; 10-5:30 daily. Spirit of St. Louis, Wright Brothers plane, moon rock. Open until 9 p.m. in summer. H.\*\*

• **B'NAI B'RITH MUSEUM**—17th and Rhode Island Ave., N.W. EX 3-5284. Mon. thru Fri. 9-5 p.m., Sun. 10-5 p.m. Closed Sat. Free group tours available.

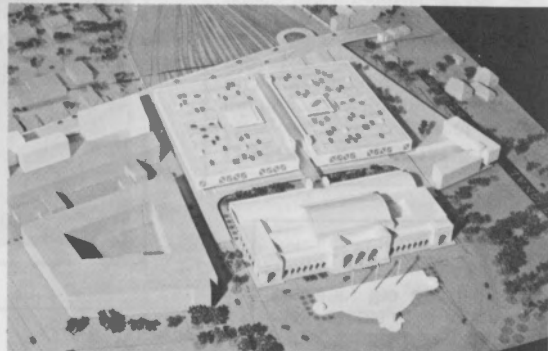
• **11-F BOTANIC GARDEN**—1st and Maryland Ave., S.W. 225-8333. Daily 9 a.m.-4 p.m. Exotic tropical garden, waterfall. H.\*\*

• **12-E CAPITOL, THE**—Capitol Hill, 224-3121. Daily 9-4:30. Tours 9-3:45. Closed Christmas, New Year's and Thanksgiving. H.

• **5-C CORCORAN GALLERY OF ART**—17th and New York Ave., N.W. 638-3211. Tuesday thru Sunday 11 a.m.-5 p.m. Tues. & Wed. free admission. Other days \$1.00. Under 12 yrs. free. Special group arrangements. Closed Monday.

• **5-B DECATUR HOUSE**—748 Jackson Place, N.W. (corner Lafayette Square) 638-1204. Commodore Stephen Decatur's town house, erected in 1818, has played a colorful role in Washington history for more than 150 years. Open daily 10 a.m. to 4 p.m. Admission charge.\*\*

• **DUMBARTON OAKS**—1703 32nd St., N.W. 232-3101. Formal gardens open daily except holidays, 2-4:45 p.m.; museum open daily except Monday and holidays, 2-4:45 p.m. Both closed July 1-Labor Day.



• **NATIONAL VISITOR CENTER**—Picturesque Union Station, just a five-minute stroll from the Capitol, will become the orientation and welcome center for Washington's tourists by 1976. The "Railroad Gothic" structure dating back to the turn of the century will feature a cyclorama, diorama, nursery, hostel and two 500-seat theaters. The railroad facilities will remain, in much-reduced space, and huge new parking facilities will be constructed.

• **FINE ARTS, NATIONAL COLLECTION OF**—8th & G Sts., N.W., 10-5:30 daily. American art. H\*\*

• **FIREARMS MUSEUM, NATIONAL RIFLE ASSOCIATION**—16th and Rhode Island Ave., N.W. 783-6505. Daily 10 a.m.-4 p.m. Closed New Year's, Easter and Christmas.

• **14-E FOLGER (SHAKESPEARE) LIBRARY**—201 E. Capitol St. LI 6-4800. Monday thru Saturday, 10 a.m.-4:30 p.m. Sundays April 15 to Labor Day. Closed holidays.

• **8-C FORD'S THEATRE, AND LINCOLN MUSEUM** 511 10th St., N.W. Daily 9 a.m.-5 p.m. Free except for theater performances. Box office 347-6260.

• **FRANCISCAN MONASTERY**—14th and Quincy St., N.E. LA 6-6800. Catacombs, gardens open Monday-Saturday 8:30 a.m.-4 p.m. Tours every 45 minutes. Sundays after each Mass until 4:30 p.m.

• **FREDERICK DOUGLASS HOME**—1411 W Street, S.E. Restored home of noted educator-diplomat. Open 9-4 Monday thru Friday, 10-5 Saturday and Sunday. \*\*

• **8-F FREER GALLERY OF ART**—12th St. and Jefferson, S.W.; 10-5:30 p.m. daily. Far and Near Eastern art, Whistler collection.

• **GEORGETOWN**—West of Rock Creek Park. Old Stone House, oldest standing house in Washington. Shopping, boutiques, restaurants and night clubs in the old colonial section of Washington. Site of spring Home and Garden tours, Georgetown University, C&O Canal.

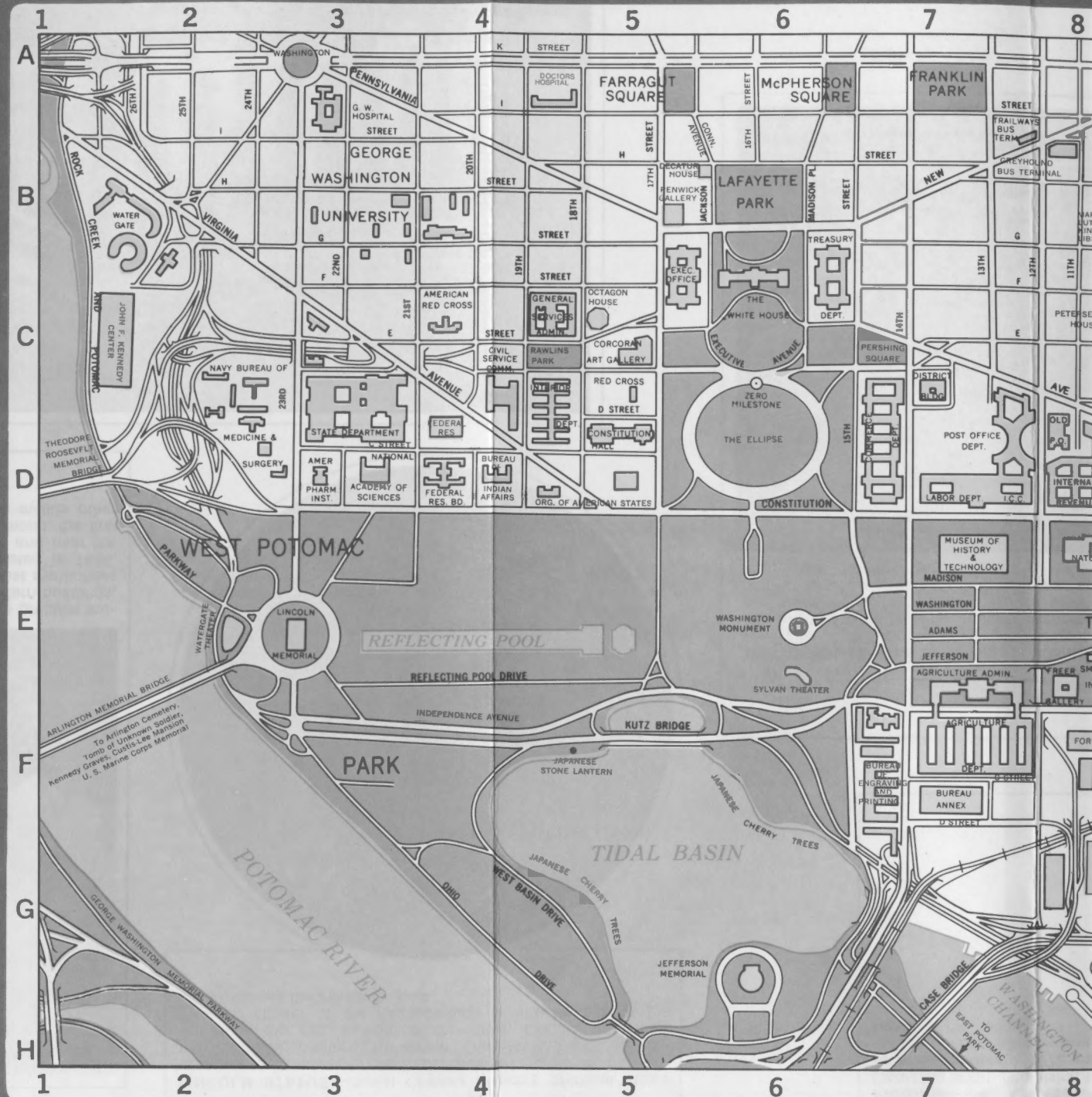
• **9-E HIRSHHORN MUSEUM & SCULPTURE GARDEN**—7th St. and Independence Ave., S.W.; oil paintings, sculpture, displayed in dramatic setting. Open 10-5:30 p.m. daily.

• **7-E HISTORY AND TECHNOLOGY, MUSEUM OF**—14th St. and Constitution Ave., N.W.; 10-5:30 daily. Huge Smithsonian facility contains Star Spangled Banner, locomotives, gowns of first ladies. Open until 9 p.m. in summer. H.\*\*

• **ISLAMIC CENTER**—2551 Massachusetts Ave., N.W. DE 2-3451. Only U.S. mosque. Daily 10 a.m.-4 p.m. Friday Congregation Prayer at noon (E.S.T.) For group tours call office of the director.

• **6-G JEFFERSON MEMORIAL**—South bank of Tidal Basin. 426-6821. Open daily, 24 hours a day. Memorial to third president, author of Declaration of Independence.

• **1-C JOHN F. KENNEDY CENTER FOR THE**



• **MOUNT VERNON**—Mount Vernon, Va. 780-2000. Home of George Washington. Daily, March 1 to October 1, 9-5; October 1 to March 1, 9-4 Admission charge for adults, \$1.50; youth 6-11, 75¢; under 6, free. Student & youth arrangements. H.

• **10-E NATIONAL GALLERY OF ART**—6th and Constitution Ave., N.W. RE 7-4215. Daily, 10-5; Sunday, noon to 9 April thru Labor Day; daily 10-9 September-June Sunday concerts 7 p.m. in the East Garden Court. H.

• **NATIONAL WAX MUSEUM**—401 E St., S.W. —New museum features galleries of U.S. Presidents, great American Blacks, figures from biblical history and a unique dolphin show. Open 7 days a week. March 16-Labor Day, 9-10; Labor Day-March 15, 9-8 Admission.

• **5-B NAVAL MUSEUM, TRUXTON-DECATUR**—1610 H St., N.W. 783-2573. Daily 10:30 a.m.-4 p.m.\*

• **NAVAL MUSEUM, U.S.**—9th and M Sts., S.E. 433-2651. Open Monday thru Friday 9-4; Saturday and Sunday 10-5.

• **NAVAL OBSERVATORY, U.S.**—34th and Massachusetts Ave., N.W. 254-4569. Conducted tours at 2 p.m. only, Monday thru Friday. Reservations necessary for groups of 10 or more.

• **5-C THE OCTAGON**—18th and New York Ave., N.W. Architectural exhibits. Served as James Madison's White House following destruction of real White House by British in 1814. Treaty of Ghent signed here, ending War of 1812. Open Tuesday thru Saturday, 10 a.m.-4 p.m.; Sunday 1-4 p.m.

• **OLD STONE HOUSE**—3051 M St., N.W. (Georgetown); 9:30-5 daily summer; 9-5 Wednesday-Sunday fall-spring. One of area's first houses, built in 1765; crafts demonstrations.

• **5-D ORGANIZATION OF AMERICAN STATES**—17th and Constitution Ave., N.W. Formerly Pan American Union, features tropical courtyard garden, Hall of Americas, Gallery of Heroes. Open Monday thru Saturday, 8:30 a.m.-4 p.m. Conducted tours 15¢ per person, reservation required for groups. 331-1010 Gift shop.





C.

## calPark

Thus, you can expect free admission.

u a storybook or civics book vacation.  
n Monument. But the 898 steps make



**VISITOR CENTER**—Picturesque Union Station, a five-minute stroll from the Capitol, will be the orientation and welcome center for tourists by 1976. The "Railroad Gothic" building, dating back to the turn of the century, will be restored. The railroad facilities will remain, but the space, and huge new parking facilities are under construction.

**ARTS, NATIONAL COLLECTION OF—**10th and Constitution Ave., N.W., 10-5:30 daily. American

**MS MUSEUM, NATIONAL RIFLE ASSOCIATION—**16th and Rhode Island Ave., N.W. Daily 10 a.m.-4 p.m. Closed New Year and Christmas.

**SHAKESPEARE) LIBRARY—**10th and Constitution Ave., N.W. 6-4800. Monday thru Saturday 10 a.m.-4:30 p.m. Sundays April 15 to May 15. Closed holidays.

**THEATRE, AND LINCOLN MUSEUM—**10th and Constitution Ave., N.W. Daily 9 a.m.-5 p.m. Free except for performances. Box office 347-6260.

**SCAN MONASTERY—**14th and Quincy Ave., N.W. 6-6800. Catacombs, gardens open Saturday 8:30 a.m.-4 p.m. Tours every 45 minutes after each Mass until 4:30 p.m. Closed holidays.

**DOUGLASS HOME—**1411 W. 10th St. Restored home of noted educator. Open 9-4 Monday thru Friday, 10-5 Saturday, 10-5 Sunday. \*\*

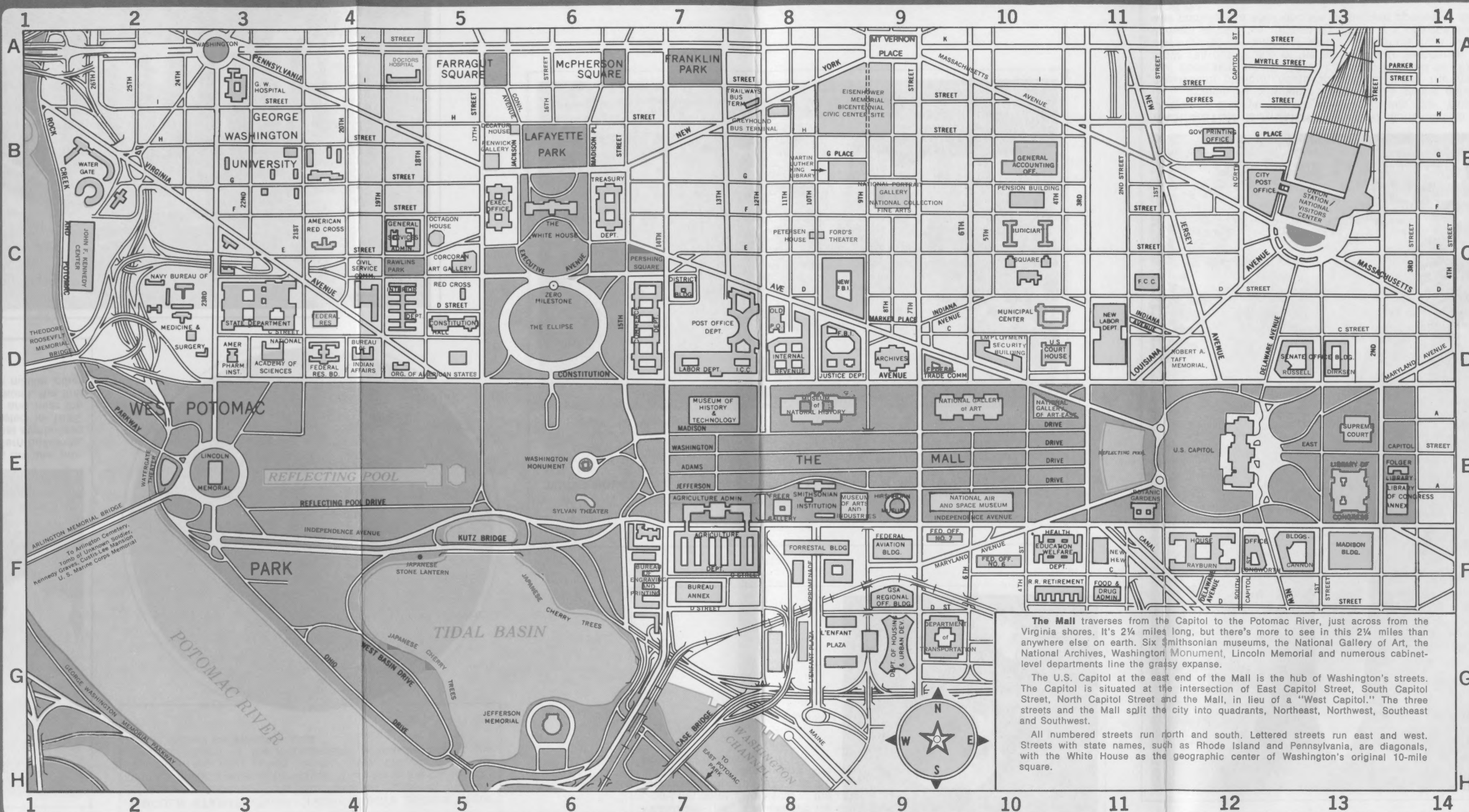
**GALLERY OF ART—**12th St. and Constitution Ave., S.W.; 10-5:30 p.m. daily. Far and near art, Whistler collection.

**ETOWN—**West of Rock Creek Park. House, oldest standing house in Washington, shopping, boutiques, restaurants and night life. Old colonial section of Washington. Evening Home and Garden tours, Georgetown, C&O Canal.

**HORN MUSEUM & SCULPTURE—**7th St. and Independence Ave., S.W.; 10-5:30 p.m. daily. Sculpture, displayed in dramatic setting. Open 10-5:30 p.m. daily.

**RY AND TECHNOLOGY, MUSEUM—**10th and Constitution Ave., N.W.; 10-5:30 p.m. daily. Huge Smithsonian facility contains model of the B-29, locomotives, gowns of the 19th century. Open until 9 p.m. in summer. H.\*\*

**C CENTER—**2551 Massachusetts Ave., N.W. 2-3451. Only U.S. mosque. Daily 10-5 p.m. Friday Congregation Prayer at noon. For group tours call office of the director.



The Mall traverses from the Capitol to the Potomac River, just across from the Virginia shores. It's 2 1/4 miles long, but there's more to see in this 2 1/4 miles than anywhere else on earth. Six Smithsonian museums, the National Gallery of Art, the National Archives, Washington Monument, Lincoln Memorial and numerous cabinet-level departments line the grassy expanse.

The U.S. Capitol at the east end of the Mall is the hub of Washington's streets. The Capitol is situated at the intersection of East Capitol Street, South Capitol Street, North Capitol Street and the Mall, in lieu of a "West Capitol." The three streets and the Mall split the city into quadrants, Northeast, Northwest, Southeast and Southwest.

All numbered streets run north and south. Lettered streets run east and west. Streets with state names, such as Rhode Island and Pennsylvania, are diagonals, with the White House as the geographic center of Washington's original 10-mile square.

● **MOUNT VERNON**—Mount Vernon, Va. 780-2000. Home of George Washington. Daily, March 1 to October 1, 9-5; October 1 to March 1, 9-4. Admission charge for adults, \$1.50; youth 6-11, 75¢; under 6, free. Student & youth arrangements. H.

● **10-E NATIONAL GALLERY OF ART**—6th and Constitution Ave., N.W. RE 7-4215. Daily, 10-5; Sunday, noon to 9 April thru Labor Day; daily 10-9 September-June Sunday concerts 7 p.m. in the East Garden Court. H.

● **NATIONAL WAX MUSEUM**—401 E St., S.W. —New museum features galleries of U.S. Presidents, great American Blacks, figures from biblical history and a unique dolphin show. Open 7 days a week. March 16-Labor Day, 9-10; Labor Day-March 15, 9-8. Admission.

● **5-B NAVAL MUSEUM, TRUXTON-DECATUR**—1610 H St., N.W. 783-2573. Daily 10:30 a.m.-4 p.m.\*

● **NAVAL MUSEUM, U.S.**—9th and M Sts., S.E. 433-2651. Open Monday thru Friday 9-4; Saturday and Sunday 10-5.

● **NAVAL OBSERVATORY, U.S.**—34th and Massachusetts Ave., N.W. 254-4569. Conducted tours at 2 p.m. only, Monday thru Friday. Reservations necessary for groups of 10 or more.

● **5-C THE OCTAGON**—18th and New York Ave., N.W. Architectural exhibits. Served as James Madison's White House following destruction of real White House by British in 1814. Treaty of Ghent signed here, ending War of 1812. Open Tuesday thru Saturday, 10 a.m.-4 p.m.; Sunday 1-4 p.m.

● **OLD STONE HOUSE**—3051 M St., N.W. (Georgetown); 9:30-5 daily summer; 9-5 Wednesday-Sunday fall-spring. One of area's first houses, built in 1765; crafts demonstrations.

● **5-D ORGANIZATION OF AMERICAN STATES**—17th and Constitution Ave., N.W. Formerly

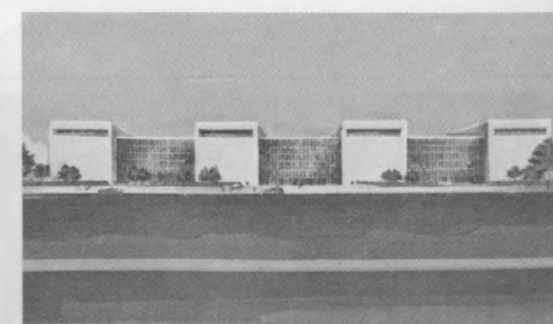
● **5-B RENWICK GALLERY**—17th and Pennsylvania Ave., N.W.; 10-5:30 p.m. daily. Smithsonian showcase for American creativity, crafts, design and the decorative arts. H.\*

● **ROOSEVELT MEMORIAL**—On Roosevelt Island in the Potomac River between Key and Roosevelt bridges. About 2 1/2 miles of footpaths through woods, impressive statue of Theodore Roosevelt amid statuary garden. 9-dark daily.

● **SHRINE OF THE IMMACULATE CONCEPTION, NATIONAL**—4th and Michigan Ave., N.E. LA 6-8300. Daily 7 a.m.-8 p.m.; Daily Masses 7:30, 8, 8:30 a.m., and 12:10, 5:15 p.m. Sunday Masses at 7:30, 9:00, 10:30 a.m., and 12 noon, 1:30 and 4:30 p.m. Holy Day masses at 7:00, 8:00, 10:00 a.m., 12 noon, and 5:30 p.m. Guided tours every half hour; Winter season every hour.

● **8-E SMITHSONIAN BUILDING**—10th St. and Jefferson, S.W. Original museum still stands, now administration office.

● **13-E SUPREME COURT**—1st and Maryland Ave., N.E. EX 3-1640. Open Monday thru Fri-



**NATIONAL AIR AND SPACE MUSEUM**—Huge Smithsonian facility is due to open for the 1976 bicentennial. It will cover most of three city blocks and will house the first airplane, Spirit of St. Louis, many historical space craft and numerous dramatic exhibits. (Most display items now temporarily housed in Arts and Industries Building.)

● **WILDLIFE PRESERVE**—13710 Central Ave., Largo, Md. - (301) 249-9200—Over 400 acres of



animals representing almost 300 species. Displayed in 68 aquariums. Sharks, octopus, exotic tropical fish and rare endangered species, etc. HP.\*\*

• **ARBORETUM, NATIONAL**—Bladensburg Rd. & R St., N.E. 399-5400. 415 acres of flowering trees and shrubs. April-October, Monday thru Friday 8 a.m.-7 p.m. Saturday and Sunday 10 a.m.-7 p.m.; November-March, Monday thru Friday 8 a.m.-5 p.m.; Saturday and Sunday 10 a.m.-5 p.m. HP.\*\*

9-D **ARCHIVES, NATIONAL**—7th and Constitution Ave., N.W. WO 3-6404. Declaration of Independence, Constitution. Monday thru Saturday, 9 a.m.-10 p.m.; Sunday 1 p.m.-10 p.m. Call 962-2000 for recorded information on exhibits. H.

• **ARLINGTON HOUSE**—Arlington Cemetery. 557-3153. Daily, October thru March, 9:30-4:30; April thru September, 9:30-6. 50¢ over 15 years.

• **ARLINGTON NATIONAL CEMETERY**—692-9875. Daily, November thru March, 8 a.m.-5 p.m. April thru October 8 a.m.-7 p.m. Tomb of the Unknown Soldier, Amphitheater, Arlington House, graves of John F. Kennedy and William Howard Taft. Changing of the guard at the Tomb of the Unknown Soldier every hour. HP.

9-E **ARTS AND INDUSTRIES BUILDING** (Smithsonian)—9th St. and Jefferson S.W.; 10-5:30 daily. Spirit of St. Louis, Wright Brothers plane, moon rock. Open until 9 p.m. in summer. H.\*\*

• **B'NAI B'RITH MUSEUM**—17th and Rhode Island Ave., N.W. EX 3-5284. Mon. thru Fri. 9-5 p.m., Sun. 10-5 p.m. Closed Sat. Free group tours available.

11-F **BOTANIC GARDEN**—1st and Maryland Ave., S.W. 225-8333. Daily 9 a.m.-4 p.m. Exotic tropical garden, waterfall. H.\*\*

12-E **CAPITOL, THE**—Capitol Hill, 224-3121. Daily 9-4:30. Tours 9-3:45. Closed Christmas, New Year's and Thanksgiving. H.

5-C **CORCORAN GALLERY OF ART**—17th and New York Ave., N.W. 638-3211. Tuesday thru Sunday 11 a.m.-5 p.m. Tues. & Wed. free admission. Other days \$1.00. Under 12 yrs. free. Special group arrangements. Closed Monday.

5-B **DECATUR HOUSE**—748 Jackson Place, N.W. (corner Lafayette Square) 638-1204. Commodore Stephen Decatur's town house, erected in 1818, has played a colorful role in Washington history for more than 150 years. Open daily 10 a.m. to 4 p.m. Admission charge.\*\*

• **DUMBARTON OAKS**—1703 32nd St., N.W. 232-3101. Formal gardens open daily except holidays, 2-4:45 p.m.; museum open daily except Monday and holidays, 2-4:45 p.m. Both closed July 1-Labor Day.

7-F **ENGRAVING AND PRINTING, BUREAU OF**—14th and C Sts., S.W. WO 4-7611. Monday thru Friday only, 8 a.m.-2:30 p.m. Closed holidays. See money and stamps made. HP.

• **EXPLORERS HALL, NATIONAL GEOGRAPHIC SOCIETY**—17th and M Sts., N.W.; 9-6 weekdays; 9-5 Saturday noon-5 Sunday. Displays depict archaeology, astronomy, adventure and discovery.

9-D **FEDERAL BUREAU OF INVESTIGATION**—9th and Pennsylvania Ave., N.W. Open Monday thru Friday, 9:15-4:15 p.m. Closed Saturday, Sunday and holidays. Hour tours every 15 minutes. Reservations necessary for groups of 15 or more.



**J. EDGAR HOOVER BUILDING**—The new headquarters of the Federal Bureau of Investigation is one of Washington's largest and most impressive new buildings. Covering a city block, the 11-story building features a spectacular courtyard.

become the orientation and welcome center for Washington's tourists by 1976. The "Railroad Gothic" structure dating back to the turn of the century will feature a cyclorama, diorama, nursery, hostel and two 500-seat theaters. The railroad facilities will remain, in much-reduced space, and huge new parking facilities will be constructed.

• **FINE ARTS, NATIONAL COLLECTION OF**—8th & G Sts., N.W., 10-5:30 daily. American art. H.\*\*

• **FIREARMS MUSEUM, NATIONAL RIFLE ASSOCIATION**—16th and Rhode Island Ave., N.W. 783-6505. Daily 10 a.m.-4 p.m. Closed New Year's, Easter and Christmas.

14-E **FOLGER (SHAKESPEARE) LIBRARY**—201 E. Capitol St. LI 6-4800. Monday thru Saturday, 10 a.m.-4:30 p.m. Sundays April 15 to Labor Day. Closed holidays.

8-C **FORD'S THEATRE, AND LINCOLN MUSEUM** 511 10th St., N.W. Daily 9 a.m.-5 p.m. Free except for theater performances. Box office 347-6260.

• **FRANCISCAN MONASTERY**—14th and Quincy St., N.E. LA 6-6800. Catacombs, gardens open Monday-Saturday 8:30 a.m.-4 p.m. Tours every 45 minutes. Sundays after each Mass until 4:30 p.m.

• **FREDERICK DOUGLASS HOME**—1411 W Street, S.E. Restored home of noted educator-diplomat. Open 9-4 Monday thru Friday, 10-5 Saturday and Sunday. \*\*

8-F **FREER GALLERY OF ART**—12th St. and Jefferson, S.W.; 10-5:30 p.m. daily. Far and Near Eastern art, Whistler collection.

• **GEORGETOWN**—West of Rock Creek Park. Old Stone House, oldest standing house in Washington. Shopping, boutiques, restaurants and night clubs in the old colonial section of Washington. Site of spring Home and Garden tours, Georgetown University, C&O Canal.

9-E **HIRSHHORN MUSEUM & SCULPTURE GARDEN**—7th St. and Independence Ave., S.W.; oil paintings, sculpture, displayed in dramatic setting. Open 10-5:30 p.m. daily.

7-E **HISTORY AND TECHNOLOGY, MUSEUM OF**—14th St. and Constitution Ave., N.W.; 10-5:30 daily. Huge Smithsonian facility contains Star Spangled Banner, locomotives, gowns of first ladies. Open until 9 p.m. in summer. H.\*\*

• **ISLAMIC CENTER**—2551 Massachusetts Ave., N.W. DE 2-3451. Only U.S. mosque. Daily 10 a.m.-4 p.m. Friday Congregation Prayer at noon (E.S.T.) For group tours call office of the director.

6-G **JEFFERSON MEMORIAL**—South bank of Tidal Basin. 426-6821. Open daily, 24 hours a day. Memorial to third president, author of Declaration of Independence.

1-C **JOHN F. KENNEDY CENTER FOR THE PERFORMING ARTS**—Rock Creek Parkway at end of New Hampshire Ave., N.W. Contains Opera House, Concert Hall, Eisenhower Theater for drama & Film Theater. Latter is home of the American Film Institute which presents classic movies (785-4600). JFK box office, 254-3600. Building open 10-9 p.m. for tourists. Group tours 10-1:15 Monday-Saturday. Also houses National Town Meetings (223-4458). For group information call 254-3724.

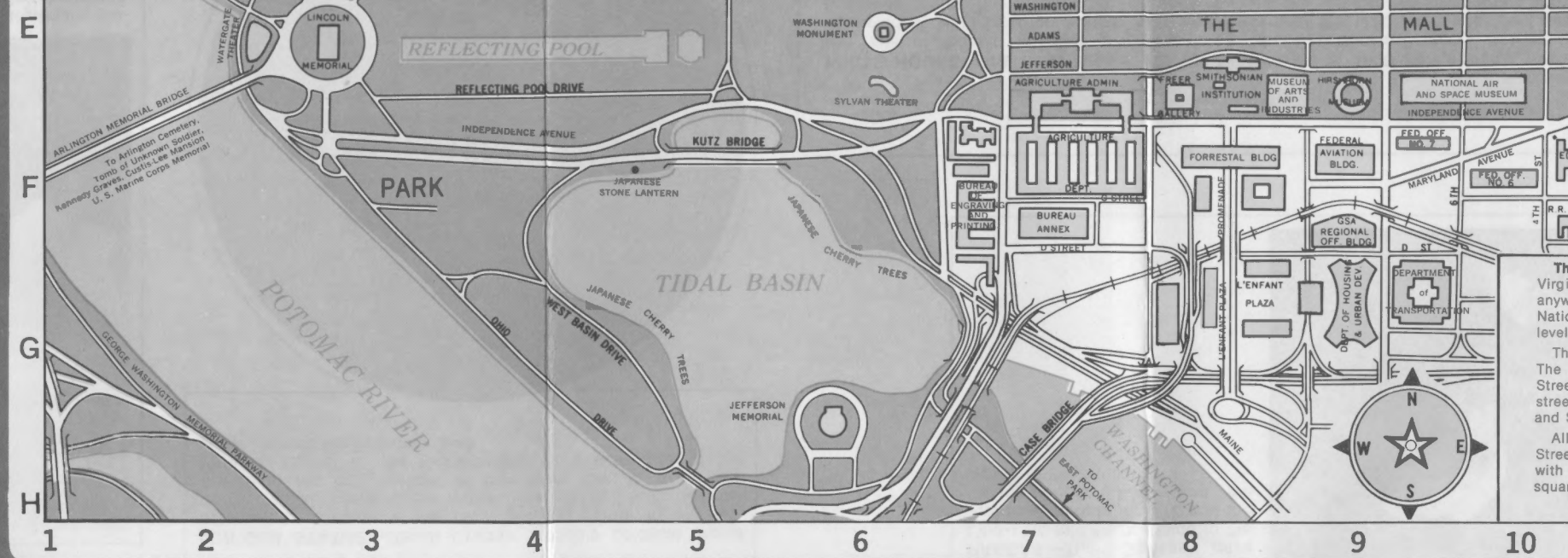
13-E **LIBRARY OF CONGRESS**—1st and Independence Ave., S.E. 426-5000. Monday thru Friday 8:30 a.m.-9:30 p.m.; Saturday 8:30 a.m.-6 p.m.; Sunday 11 a.m.-6 p.m. Tours available 9-4 p.m. daily, on the hour Monday thru Friday. H.\*\*

• **LIGHTSHIP CHESAPEAKE**—Hains Point 1-5 Tuesday, Thursday & 1-4 Saturday, Sunday. Decommissioned Coast Guard vessel is environmental workshop for children. Simulated sub cruise, aquarium, exhibits. For group information call 426-6896.

3-E **LINCOLN MEMORIAL**—West Potomac Park, foot of 23rd St., N.W. Open daily 8 a.m. to midnight. Memorial to 16th president.

• **MARINE CORPS MEMORIAL (IWO JIMA)**—Route 50 across Arlington Memorial Bridge. Statue depicts famed flag-raising on Iwo Jima.

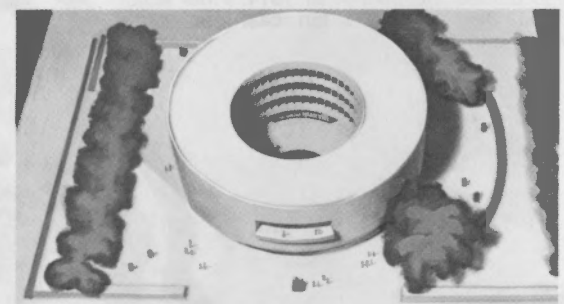
9-B **MARTIN LUTHER KING MEMORIAL LIBRARY**—Main Public Library—9th and G Sts., N.W. Building designed by Mies van der Rohe. Washingtoniana collection of city history, Black Studies, free film programs, exhibits, information services. 9 a.m.-9 p.m. Mon.-Thurs., 9 a.m.-5:30 p.m., Fri. and Sat.



• **MOUNT VERNON**—Mount Vernon, Va. 780-2000. Home of George Washington. Daily, March 1 to October 1, 9-5; October 1 to March 1, 9-4 Admission charge for adults, \$1.50; youth 6-11, 75¢; under 6, free. Student & youth arrangements. H.

10-E **NATIONAL GALLERY OF ART**—6th and Constitution Ave., N.W. RE 7-4215. Daily, 10-5; Sunday, noon to 9 April thru Labor Day; daily 10-9 September-June Sunday concerts 7 p.m. in the East Garden Court. H.

• **NATIONAL WAX MUSEUM**—401 E St., S.W. —New museum features galleries of U.S. Presidents, great American Blacks, figures from biblical history and a unique dolphin show. Open 7 days a week. March 16-Labor Day, 9-10; Labor Day-March 15, 9-8 Admission.



**HIRSHHORN MUSEUM AND SCULPTURE GARDEN**—New Mall museum houses art masterpieces in circular building surrounding dramatic open-air courtyard. Unprecedented collection of paintings and monumental sculpture of the past 125 years. First major Mall museum to open in a decade offers art previously unknown to the public.

8-E **NATURAL HISTORY, MUSEUM OF (Smithsonian)** 10th & Constitution Ave., N.W.; 10-5:30 daily; world's largest stuffed elephant; dinosaur bones, stuffed whale, Hope Diamond. Open till 9 p.m. summers. H.\*\*

## WASHINGTON ORIGIN & DESIGN

George Washington chose the site of the city—and its Capitol and White House—in 1790. He wanted to build a city halfway between the North and the South, a city accessible to everyone. Not surprisingly, modern Washington bears characteristics of both south-

ern and northern cities. He located it on a picturesque fork of the Potomac just below where scenic Great Falls blocked navigation. Maryland donated 69.25 square miles, Virginia 30.75, and the District of Columbia became a 10-mile square city. Washington

named Pierre Charles L'Enfant to design the new city, the first American city to be built around a plan.

In 1846, Washington returned Virginia's land, then largely undeveloped. Today it is Arlington County and Alexandria.

5-B **NAVAL MUSEUM, TRUXTON-DECATUR**—1610 H St., N.W. 783-2573. Daily 10:30 a.m.-4 p.m.\*

• **NAVAL MUSEUM, U.S.**—9th and M Sts., S.E. 433-2651. Open Monday thru Friday 9-4; Saturday and Sunday 10-5.

• **NAVAL OBSERVATORY, U.S.**—34th and Massachusetts Ave., N.W. 254-4569. Conducted tours at 2 p.m. only, Monday thru Friday. Reservations necessary for groups of 10 or more.

5-C **THE OCTAGON**—18th and New York Ave., N.W. Architectural exhibits. Served as James Madison's White House following destruction of real White House by British in 1814. Treaty of Ghent signed here, ending War of 1812. Open Tuesday thru Saturday, 10 a.m.-4 p.m.; Sunday 1-4 p.m.

• **OLD STONE HOUSE**—3051 M St., N.W. (Georgetown); 9:30-5 daily summer; 9-5 Wednesday-Sunday fall-spring. One of area's first houses, built in 1765; crafts demonstrations.

5-D **ORGANIZATION OF AMERICAN STATES**—17th and Constitution Ave., N.W. Formerly Pan American Union, features tropical courtyard garden, Hall of Americas, Gallery of Heroes. Open Monday thru Saturday, 8:30 a.m.-4 p.m. Conducted tours 15¢ per person, reservation required for groups, 331-1010. Gift shop.

8-C **PETERSEN HOUSE (WHERE LINCOLN DIED)**—516 10th St., N.W., across from Ford's Theatre. 426-6830. Daily 9 a.m.-5 p.m.\*\*

• **PHILLIPS COLLECTION**—1600-1612 21st St., N.W. World-famed art collection. Tuesday through Saturday 10-5, Sunday 2-7. Closed Mondays.

• **PIERCE MILL**—Beach Dr. at Park Rd., N.W.; 19th century flour mill still operating. Open Tuesday-Friday 1-4, 10-5 week ends, closed Monday. Closed Tuesday in winter months.

9-B **PORTRAIT GALLERY, NATIONAL**—8th and F Streets, N.W. 10-5:30 daily. Portraits of men and women who made strong impact on American life. H.\*\*

5-B **RENWICK GALLERY**—17th and Pennsylvania Ave., N.W.; 10-5:30 p.m. daily. Showcase for American creativity, crafts and the decorative arts. H.\*\*

• **ROOSEVELT MEMORIAL**—On Rock Creek land in the Potomac River between Roosevelt bridges. About 2½ miles of through woods, impressive statue of Roosevelt amid statuary garden. 9-5.

• **SHRINE OF THE IMMACULATE CONCEPTION, NATIONAL**—4th and Michigan Ave., N.W. LA 6-8300. Daily 7 a.m.-8 p.m.; Daily 7:30, 8, 8:30 a.m., and 12:10, 5:15 p.m. Masses at 7:30, 9:00, 10:30 a.m., and 1:30 and 4:30 p.m. Holy Day masses 8:00, 10:00 a.m., 12 noon, and 5:30 p.m. tours every half hour; Winter season e

8-E **SMITHSONIAN BUILDING**—10th St. and Jefferson, S.W. Original museum still serves as administration office.

13-E **SUPREME COURT**—1st and Pennsylvania Ave., N.E. EX 3-1640. Open Monday thru Friday, 9 a.m.-4:30 p.m. Closed Saturday and holidays. Tours 9:30 a.m. to 4 p.m. half hour except when court is in session four weekdays at 4 p.m. Court usual session July-September. HP.

• **TEXTILE MUSEUM**—2320 S St., N.W. Peruvian & Islamic handwoven materials. Central American Indian textiles and rugs. Tues.-Fri., 10-5. Closed Sunday. day. Group arrangements. 667-0442.

6-C **TREASURY DEPARTMENT**—Pennsylvania Ave., N.W. Displays of money, real and counterfeit; also sales of uncirculated coins. Display open Tuesday thru Friday 10 a.m.-3:00 p.m., Saturday 10:00 a.m.-12:00 p.m. and closed on Sundays, Mondays and holidays. 393-6400.

11-F **VOICE OF AMERICA**—330 Independence Ave., S.W. 755-4744. Tours Monday thru Friday 9 a.m.-4 p.m.

• **WASHINGTON CATHEDRAL**—Wisconsin Ave., N.W. Call WO 3-6404 for times of services. Only Gothic cathedral under construction in the world. Conducted daily thru Saturday, 10 a.m. thru 3:15 p.m. 12:15, 1:30 and 2:30 p.m.

6-E **WASHINGTON MONUMENT**—Open daily at 15th St. N.W. 426-6839. Open daily thru Labor Day, 8 a.m.-midnight; day after Labor Day thru March 14, 9 a.m.-5 p.m. 10¢ for adults. H.

6-C **WHITE HOUSE**—1600 Pennsylvania Ave., N.W. 456-1414. Open Tuesday thru Saturday, 9 a.m.-noon; and Saturdays, June thru August, 9 a.m.-2 p.m. Closed some holidays. Reservations required. H.

For recorded schedules of events for visitors in the Washington area, dial:

National Archives / 962-2000  
Capital Park Activities / 426-6975

• Smithsonian Institution Museums / 737-8811  
• Washington Area Convention & Visitors Bureau around town day and night / 737- 8866



Collection of—  
daily. American

ONAL RIFLE AS—  
Island Ave., N.W.  
p.m. Closed New

RE) LIBRARY—  
Monday thru Satur-  
days April 15 to

NCOLN MUSEUM  
p.m. Free except  
office 347-6260.

14th and Quincy  
bs, gardens open  
p.m. Tours every 45  
ass until 4:30 p.m.

HOME—1411 W  
noted educator—  
Friday, 10-5 Sat-

RT—12th St. and  
n. daily. Far and  
ction.

Rock Creek Park.  
ng house in Wash-  
staurants and night  
on of Washington.  
len tours, George-

& SCULPTURE  
ndence Ave., S.W.;  
played in dramatic  
y.

LOGY, MUSEUM  
n Ave., N.W.; 10-  
n facility contains  
otives, gowns of  
summer. H.\*\*

Massachusetts Ave.,  
mosque. Daily 10  
on Prayer at noon  
ice of the director.

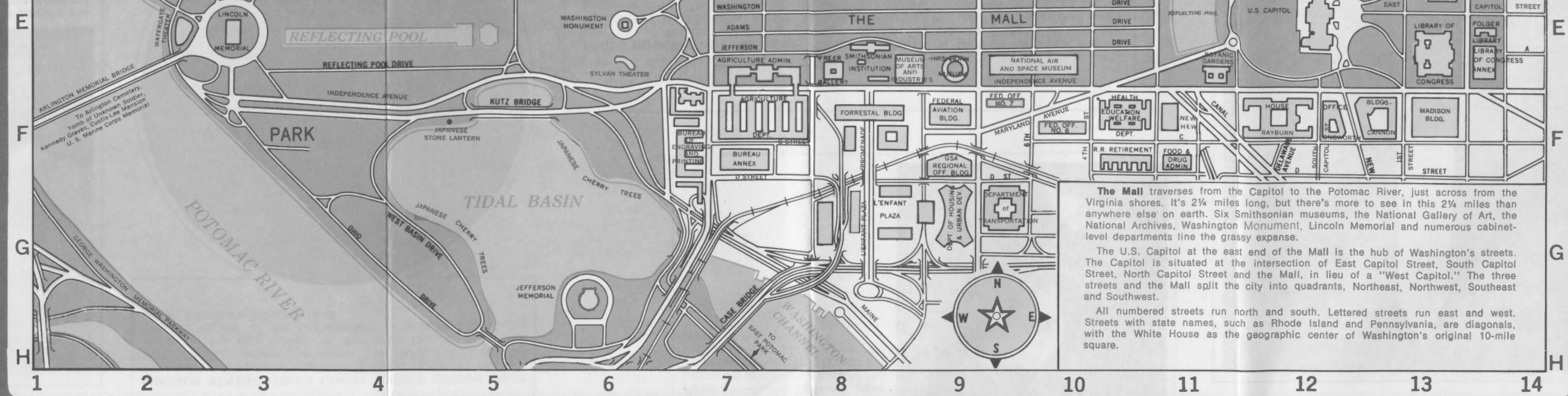
—South bank of  
daily, 24 hours a  
nt, author of Dec-

ENTER FOR THE  
Creek Parkway at  
p., N.W. Contains  
isenhower Theater  
ter is home of the  
n presents classic  
office, 254-3600.  
urists. Group tours  
o houses National  
or group informa-

SS—1st and In-  
000. Monday thru  
aturday 8:30 a.m.-  
n. Tours available  
day thru Friday. H.\*\*

—Hains Point 1-5  
lay, Sunday. Decom-  
l is environmental  
d sub cruise, aqua-  
ation call 426-6896.  
est Potomac Park,  
daily 8 a.m. to mid-  
nt.

AL (IWO JIMA)—  
Memorial Bridge.  
ing on Iwo Jima.  
NG MEMORIAL  
y—9th and G Sts.,  
ies van der Rohe.  
city history, Black  
exhibits, informa-  
on.—Thurs., 9 a.m.-



The Mall traverses from the Capitol to the Potomac River, just across from the Virginia shores. It's 2 1/4 miles long, but there's more to see in this 2 1/4 miles than anywhere else on earth. Six Smithsonian museums, the National Gallery of Art, the National Archives, Washington Monument, Lincoln Memorial and numerous cabinet-level departments line the grassy expanse.

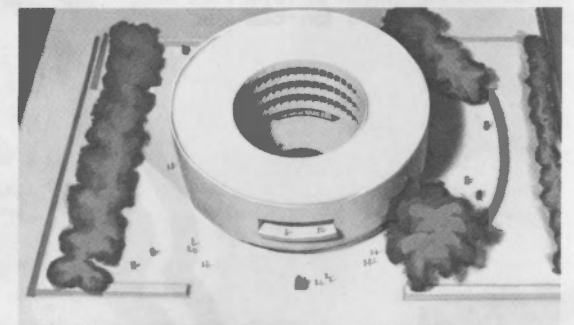
The U.S. Capitol at the east end of the Mall is the hub of Washington's streets. The Capitol is situated at the intersection of East Capitol Street, South Capitol Street, North Capitol Street and the Mall, in lieu of a "West Capitol." The three streets and the Mall split the city into quadrants, Northeast, Northwest, Southeast and Southwest.

All numbered streets run north and south. Lettered streets run east and west. Streets with state names, such as Rhode Island and Pennsylvania, are diagonals, with the White House as the geographic center of Washington's original 10-mile square.

• **MOUNT VERNON**—Mount Vernon, Va. 780-2000. Home of George Washington. Daily, March 1 to October 1, 9-5; October 1 to March 1, 9-4 Admission charge for adults, \$1.50; youth 6-11, 75¢; under 6, free. Student & youth arrangements. H.

• **10-E NATIONAL GALLERY OF ART**—6th and Constitution Ave., N.W. RE 7-4215. Daily, 10-5; Sunday, noon to 9 April thru Labor Day; daily 10-9 September-June Sunday concerts 7 p.m. in the East Garden Court. H.

• **NATIONAL WAX MUSEUM**—401 E St., S.W.—New museum features galleries of U.S. Presidents, great American Blacks, figures from biblical history and a unique dolphin show. Open 7 days a week. March 16-Labor Day, 9-10; Labor Day-March 15, 9-8 Admission.



**HIRSHHORN MUSEUM AND SCULPTURE GARDEN**—New Mall museum houses art masterpieces in circular building surrounding dramatic open-air courtyard. Unprecedented collection of paintings and monumental sculpture of the past 125 years. First major Mall museum to open in a decade offers art previously unknown to the public.

• **8-E NATURAL HISTORY, MUSEUM OF (Smithsonian)**—10th & Constitution Ave., N.W.; 10-5:30 daily; world's largest stuffed elephant; dinosaur bones, stuffed whale, Hope Diamond. Open till 9 p.m. summers. H.\*\*

• **5-B NAVAL MUSEUM, TRUXTUN-DECATUR**—1610 H St., N.W. 783-2573. Daily 10:30 a.m.-4 p.m.\*\*

• **NAVAL MUSEUM, U.S.**—9th and M Sts., S.E. 433-2651. Open Monday thru Friday 9-4; Saturday and Sunday 10-5.

• **NAVAL OBSERVATORY, U.S.**—34th and Massachusetts Ave., N.W. 254-4569. Conducted tours at 2 p.m. only, Monday thru Friday. Reservations necessary for groups of 10 or more.

• **5-C THE OCTAGON**—18th and New York Ave., N.W. Architectural exhibits. Served as James Madison's White House following destruction of real White House by British in 1814. Treaty of Ghent signed here, ending War of 1812. Open Tuesday thru Saturday, 10 a.m.-4 p.m.; Sunday 1-4 p.m.

• **OLD STONE HOUSE**—3051 M St., N.W. (Georgetown); 9:30-5 daily summer; 9-5 Wednesday-Sunday fall-spring. One of area's first houses, built in 1765; crafts demonstrations.

• **5-D ORGANIZATION OF AMERICAN STATES**—17th and Constitution Ave., N.W. Formerly Pan American Union, features tropical courtyard garden, Hall of Americas, Gallery of Heroes. Open Monday thru Saturday, 8:30 a.m.-4 p.m. Conducted tours 15¢ per person, reservation required for groups, 331-1010. Gift shop.

• **8-C PETERSEN HOUSE (WHERE LINCOLN DIED)**—516 10th St., N.W., across from Ford's Theatre. 426-6830. Daily 9 a.m.-5 p.m.\*\*

• **PHILLIPS COLLECTION**—1600-1612 21st St., N.W. World-famed art collection. Tuesday through Saturday 10-5, Sunday 2-7. Closed Mondays.

• **PIERCE MILL**—Beach Dr. at Park Rd., N.W.; 19th century flour mill still operating. Open Tuesday-Friday 1-4, 10-5 week ends, closed Monday. Closed Tuesday in winter months.

• **9-B PORTRAIT GALLERY, NATIONAL**—8th and F Streets, N.W. 10-5:30 daily. Portraits of men and women who made strong impact on American life. H.\*\*

• **5-B RENWICK GALLERY**—17th and Pennsylvania Ave., N.W.; 10-5:30 p.m. daily. Smithsonian showcase for American creativity, crafts, design and the decorative arts. H.\*\*

• **ROOSEVELT MEMORIAL**—On Roosevelt Island in the Potomac River between Key and Roosevelt bridges. About 2 1/2 miles of footpaths through woods, impressive statue of Theodore Roosevelt amid statuary garden. 9-dark daily.

• **SHRINE OF THE IMMACULATE CONCEPTION, NATIONAL**—4th and Michigan Ave., N.E. LA 6-8300. Daily 7 a.m.-8 p.m.; Daily Masses 7, 7:30, 8, 8:30 a.m., and 12:10, 5:15 p.m. Sunday Masses at 7:30, 9:00, 10:30 a.m., and 12 noon, 1:30 and 4:30 p.m. Holy Day masses at 7:00, 8:00, 10:00 a.m., 12 noon, and 5:30 p.m. Guided tours every half hour; Winter season every hour.

• **8-E SMITHSONIAN BUILDING**—10th St. and Jefferson, S.W. Original museum still stands, now administration office.

• **13-E SUPREME COURT**—1st and Maryland Ave., N.E. EX 3-1640. Open Monday thru Friday, 9 a.m.-4:30 p.m. Closed Saturday, Sunday and holidays. Tours 9:30 a.m. to 4 p.m. every half hour except when court is in session. Last tour weekdays at 4 p.m. Court usually not in session July-September. HP.

• **TEXTILE MUSEUM**—2320 S St., N.W. Historic Peruvian & Islamic handwoven material, North & Central American Indian textiles and Oriental rugs. Tues.-Fri., 10-5. Closed Sunday and Monday. Group arrangements. 667-0442.

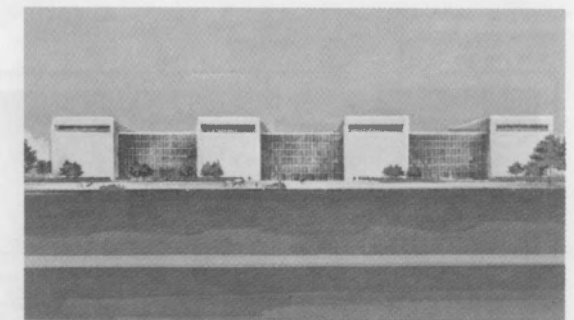
• **6-C TREASURY DEPARTMENT**—15th and Pennsylvania Ave., N.W. Displays of money, both real and counterfeit; also sales of uncirculated coins. Display open Tuesday thru Friday 9:30 a.m.-3:00 p.m., Saturday 10:00 a.m.-2:00 p.m. and closed on Sundays, Mondays and holidays. 393-6400.

• **11-F VOICE OF AMERICA**—330 Independence Ave., S.W. 755-4744. Tours Monday thru Friday 9 a.m.-4 p.m.

• **WASHINGTON CATHEDRAL**—Wisconsin and Massachusetts Ave., N.W. Call WO 6-3500 for times of services. Only Gothic cathedral under construction in the world. Conducted tours Monday thru Saturday, 10 a.m. thru 3:15 p.m. Sunday 12:15, 1:30 and 2:30 p.m.

• **6-E WASHINGTON MONUMENT**—On the Mall at 15th St. N.W. 426-6839. Open daily March 15 thru Labor Day, 8 a.m.-midnight; day after Labor Day thru March 14, 9 a.m.-5 p.m. Elevator fee 10¢ for adults. H.

• **6-C WHITE HOUSE**—1600 Pennsylvania Ave., N.W. 456-1414. Open Tuesday thru Saturday, 10 a.m.-noon; and Saturdays, June thru August, 10 a.m.-2 p.m. Closed some holidays. No passes required. H.



**NATIONAL AIR AND SPACE MUSEUM**—Huge Smithsonian facility is due to open for the 1976 bicentennial. It will cover most of three city blocks and will house the first airplane, Spirit of St. Louis, many historical space craft and numerous dramatic exhibits. (Most display items now temporarily housed in Arts and Industries Building.)

• **WILDLIFE PRESERVE**—13710 Central Ave., Largo, Md. - (301) 249-9200—Over 400 acres of animal fun just 12 miles from downtown D.C. A 2 1/2 mile tram ride runs through 4 separate continental environments. 12 acre entertainment center features reptile and macaw shows, 30-minute wildlife movie, artist's village, duck pond and restaurants. Open mid-April-Labor Day, seven days a week from 9:30 a.m. to 5:30 p.m. After Labor Day, open weekends only. Closes late October.

• **WOLF TRAP FARM PARK FOR THE PERFORMING ARTS**—Virginia Route 7 near Vienna, Va. Also accessible (for program performances only) via Dulles Airport access highway. The nation's first national park for the performing arts offers opera, symphonic music, pop concerts, ballet. (703) 938-3800. (Open warm weather only.) Call for round trip bus information

• **ZOOLOGICAL PARK, NATIONAL**—3001 Connecticut Ave., N.W. 628-4422. More than 2000 animals, many rare and unusual. Grounds open daily 6 a.m.-dark, gates close one hour after buildings. Parking: \$1.00 per car. H.

• **Outside of Map Area.**  
\*\* Denotes not open Christmas Day.  
H Denotes facilities for handicapped persons available.  
HP Denotes facilities available for handicapped if arranged in advance; please phone.  
Admission free unless otherwise indicated.



**Washington Area Convention and Visitors Bureau**  
1129 20th Street, N.W.  
Washington, D.C. 20036  
(202) 659-6423

## WASHINGTON ORIGIN & DESIGN

George Washington chose the site of the city—and its Capitol and White House—in 1790. He wanted to build a city halfway between the North and the South, a city accessible to everyone. Not surprisingly, modern Washington bears characteristics of both south-

ern and northern cities. He located it on a picturesque fork of the Potomac just below where scenic Great Falls blocked navigation. Maryland donated 69.25 square miles, Virginia 30.75, and the District of Columbia became a 10-mile square city. Washington

named Pierre Charles L'Enfant to design the new city, the first American city to be built around a plan.

In 1846, Washington returned Virginia's land, then largely undeveloped. Today it is Arlington County and Alexandria.

For recorded schedules of events for visitors in the Washington area, dial:

National Archives / 962-2000 • Smithsonian Institution Museums / 737-8811 • National Capital Park Activities / 426-6975 • Washington Area Convention & Visitors Bureau around town day and night / 737- 8866





Include  
your family  
and friends.



Elaine Powell



Frederick Douglass Home



Chesapeake & Ohio Canal



The Capitol

# Washington, D.C. Bring Your Camera!



Lincoln Memorial

*Prepared as a public service by Kodak*

Washington, D.C.—  
Bring Your Camera!

New Publication 5-74 AXXX  
Printed in U.S.A.

KODAK Publication No. AC-77

KODAK, INSTAMATIC, KODACOLOR, KODACHROME, and  
EKTACHROME are trademarks.

Another KODAK  
Picture-Taking Guide



## Super 8 Sound Movies

An easy and dramatic way to record your visit to Washington is with a super 8 existing-light sound movie camera. You can use the same camera/film combination for both indoor and outdoor scenes. No movie light is required indoors if you use a fast film—try one with a speed of ASA 160. Movies are a great way for student groups to document their discoveries. Use the various guidebooks to create narration describing each movie scene.

## More Information

For many new and exciting ideas on picture-taking, see the wide selection of Kodak books and other publications on sale at your photo dealer. For a free folder describing these publications, send a self-addressed business-size envelope to the address given below and ask for *Photo Books From Kodak*, KODAK Publication No. A3-75.

If you have any questions about picture-taking, write to Eastman Kodak Company, Photo Information, Dept. 841, 343 State Street, Rochester, New York 14650.



**KODAK Film.**  
**For the**  
**times of your life.**

Type of Picture	KODAK Film
Color Prints	KODACOLOR Film
Color Slides	KODACHROME and EKTACHROME Films
Color Movies	KODACHROME and EKTACHROME Movie Films



July 4

George Robinson

## High-Speed Films for 35mm Cameras

You can hand-hold your camera for outdoor pictures at night and indoor pictures without flash if your camera has an  $f/2$  or faster lens. Use KODAK High Speed EKTACHROME Film. You can increase the effective speed of the Tungsten film from ASA 125 to ASA 320 and the Daylight film from ASA 160 to ASA 400 if you obtain special processing.

Simply visit a photo retailer and explain that you have exposed the film at the increased speed and need the special processing service. Although the charge for the special processing is in addition to the regular cost for processing, the increased speed will allow you to photograph scenes you otherwise couldn't.

The Tungsten film will produce a more natural rendering for many of the indoor exhibits and illuminated monuments and buildings at night. However, many people also find the "warmer" colors produced by the Daylight film to be pleasing.



Include  
your family  
and friends.



Elaine Powell



Frederick Douglass Home





You can take pictures like many of these with any inexpensive camera. Always keep your camera with you.



Many of the photos in this brochure were taken by photographers of the National Park Service, U.S. Department of the Interior.

For a recorded message of scheduled events open to visitors in the Washington area, call these numbers:  
National Capital Parks, **DIAL-A-PARK, 426-6975**

Washington Area Convention & Visitors Bureau, **737-8866**

Smithsonian Institution Museums, **737-8811**

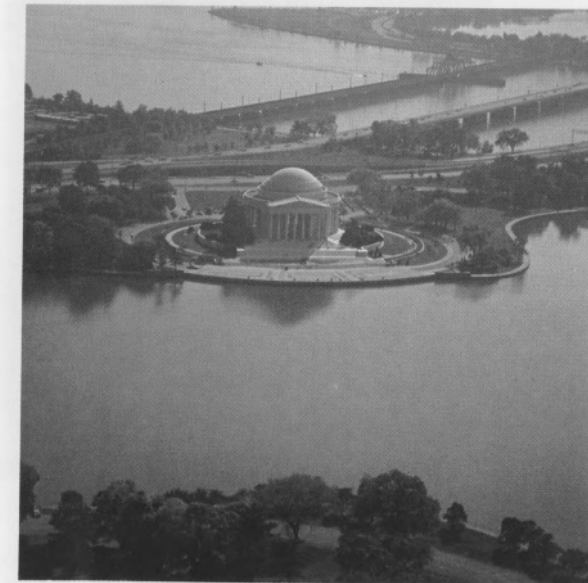
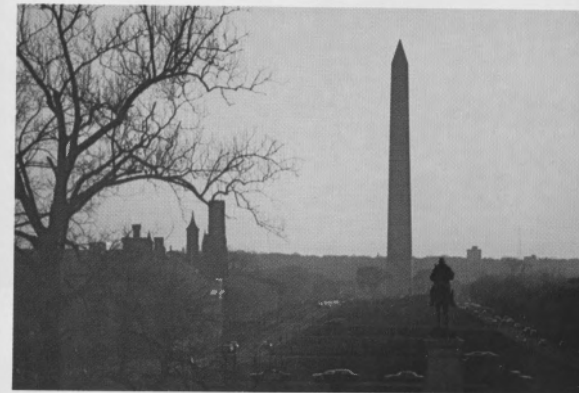


Reflecting Pool and Lincoln Memorial

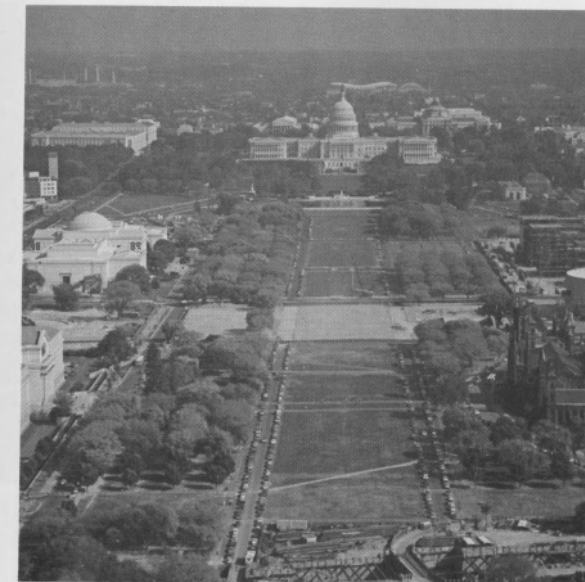


The White House

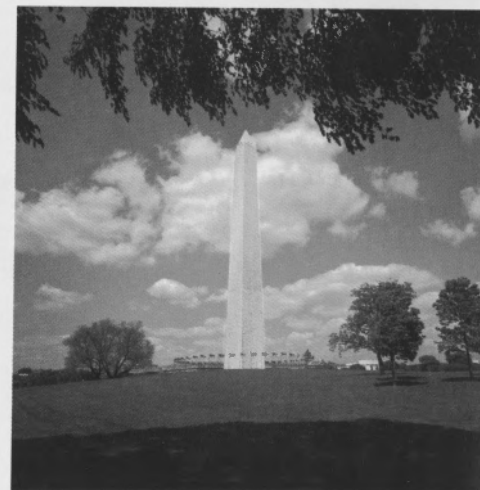
Take four pictures of the Mall and monument area from the top of the Washington Monument.



Tidal Basin and Jefferson Memorial



Mall area and Capitol



Washington Monument

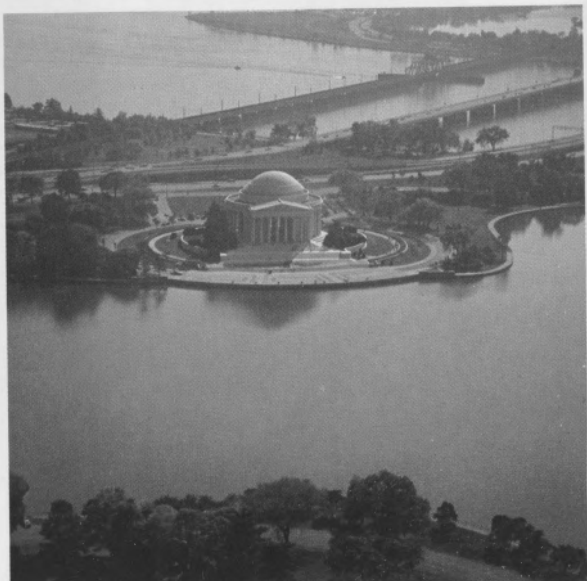


Reflecting Pool and Lincoln Memorial



The White House

Take four pictures of the Mall and monument area from the top of the Washington Monument.



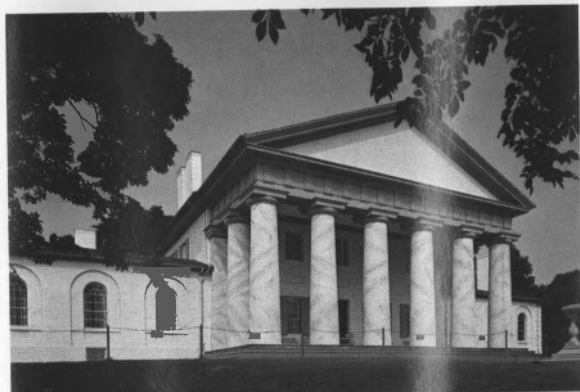
Tidal Basin and Jefferson Memorial



Mall area and Capitol



Grave of John F. Kennedy at Arlington National Cemetery



Arlington House in Arlington National Cemetery



Springtime Cherry Blossom Festival Parade



Tomb of the Unknown Soldier in Arlington National Cemetery

For sharp pictures,  
gently *squeeze*  
the shutter release  
while holding  
your camera  
steady.



Pictures of flowers  
will enhance your photo album.



The House Where Lincoln Died



Elaine P

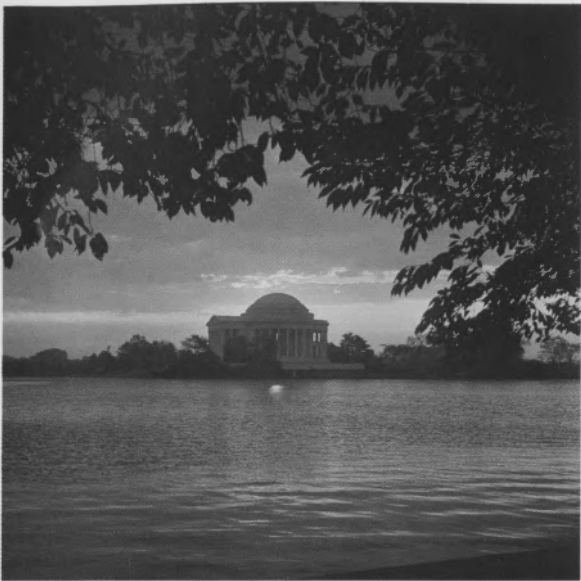


Arlington Memorial Bridge





Springtime cherry blossoms



Take several pictures of each monument and famous building. Follow these examples.



Jefferson Memorial



The Capitol

Frank Solomon



All seasons are good times for taking pictures.

1



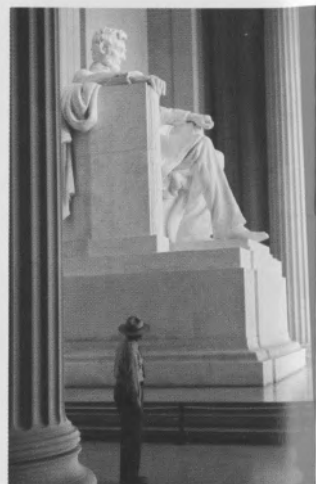
The U.S. Marine Corps War Memorial—Iwo Jima Statue







Marine Corps War Memorial—Iwo Jima Statue



Lincoln Memorial



John F. Kennedy Center



The White House—view from Lafayette Park



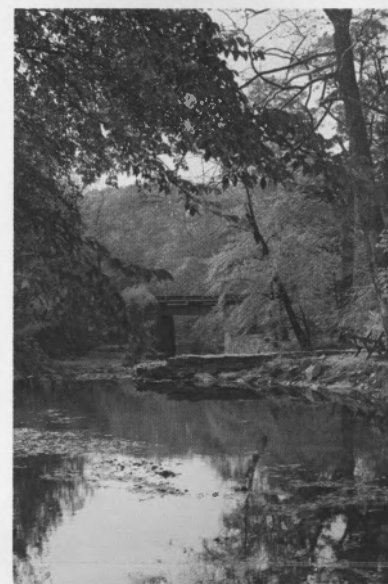
The White House—view from The Ellipse



Historic Georgetown



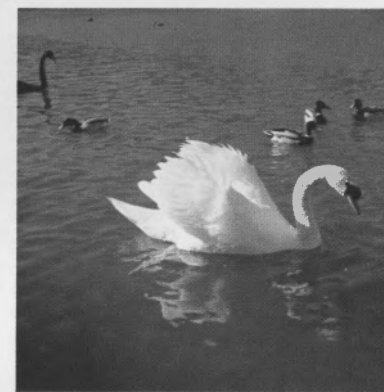
National Zoological Park



Rock Creek Park



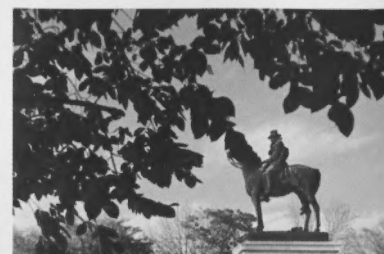
KODAK Pocket INSTAMATIC® Cameras are popular with travelers. They are light and compact, so that you can carry a camera and a day's supply of film in sportscoat pockets or a handbag.



Swans on Reflecting Pool



Move in close to capture interesting details on buildings.







Springtime cherry blossoms

2

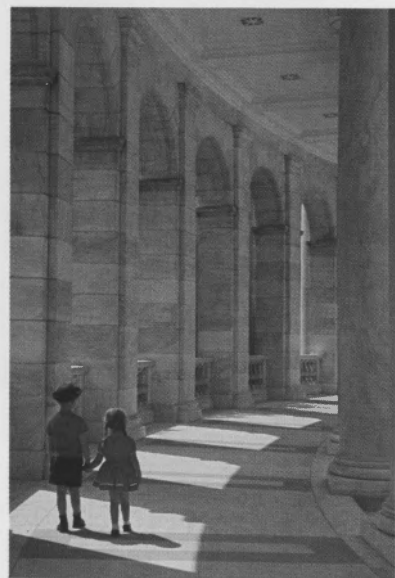


Jefferson Memorial



The Capitol

Frank Solomon



and famous building.  
Follow these  
examples.



All seasons are good times for taking pictures.

1



Dome of Capitol at night



Keep your camera  
ready for special events.



Theodore Roosevelt Memorial



For sight-seeing  
information,  
visit the National Park  
Service kiosks.



Fort Washington  
Lightship Chesapeake







They are light and compact,  
so that you can carry a  
camera and a day's supply of  
film in sportscoat pockets  
or a handbag.



Swans on Reflecting Pool



Move in close to capture  
interesting details on buildings.



Statues abound in Washington.

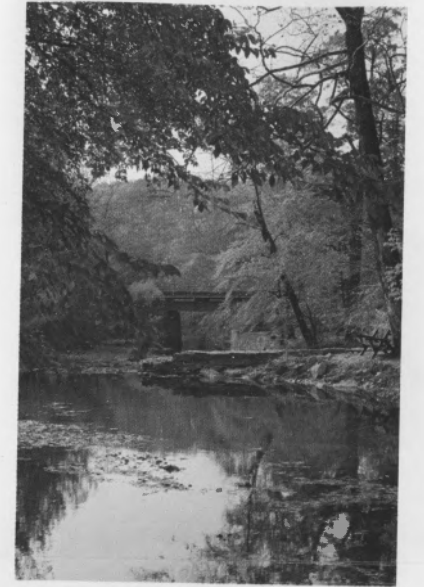
Frank Solomon



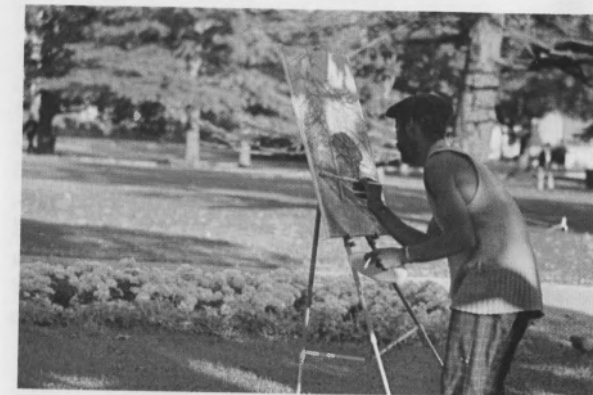
National Shrine of the Immaculate Conception



National Zoological Park



Rock Creek Park



Smithsonian Institution, Museum of History and Technology



Smithsonian Institution, Air and Space Museum



For sight-seeing  
information,  
the National Park  
service kiosks.



Fort Washington  
Lightship Chesapeake



Supreme Court  
Mount Vernon



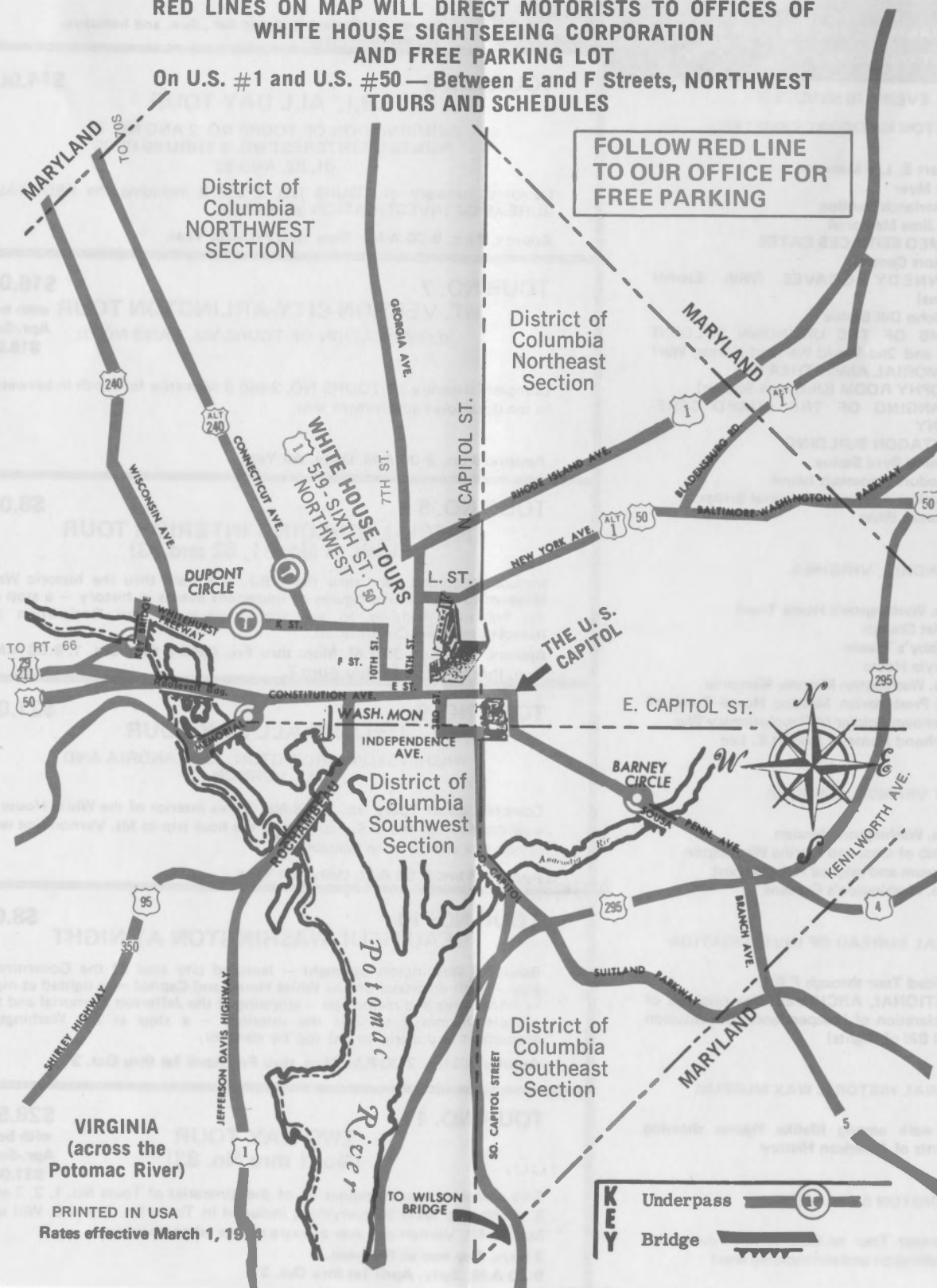


RED LINES ON MAP WILL DIRECT MOTORISTS TO OFFICES OF  
WHITE HOUSE SIGHTSEEING CORPORATION  
AND FREE PARKING LOT

On U.S. #1 and U.S. #50 — Between E and F Streets, NORTHWEST  
TOURS AND SCHEDULES

FOLLOW RED LINE  
TO OUR OFFICE FOR  
FREE PARKING

WE HAVE NO CONNECTION with sightseeing salesmen on the streets of Washington.  
Drive directly to our office for FREE PARKING, or call 393-1616 for FREE PICKUP  
and RETURN service at your hotel.



VIRGINIA  
(across the  
Potomac River)

PRINTED IN USA  
Rates effective March 1, 1964

ENTRANCE FEES ARE INCLUDED

Lectures by Courteous Licensed Tourguides over Public  
Address System in Buses With Large Picture Windows.

SEE

Washington, D.C.

YOUR NATION'S CAPITAL



This official guest button is worn  
while you are on tour. It is your  
souvenir when tour is finished.

AMERICAN SIGHTSEEING TOURS  
AND SCHEDULES  
Air-conditioned  
buses  
OPERATED BY  
**WHITE HOUSE  
SIGHTSEEING**  
CORPORATION

HAVE WE ADDRESSED YOU CORRECTLY? IF NOT PLEASE GIVE OLD AND  
NEW ADDRESS, INCLUDING ZIP CODE.



519 SIXTH STREET, N.W.  
(On U. S. No. 1 & 50 Between E and F Streets)

WASHINGTON, D. C. 20001

Phone: 393-1616

(AREA CODE 202)

FAMILY RATE:

Children under 12 years, half fare when  
accompanied by a parent.

SEE

Washington, D.C.



WHITE HOUSE  
SIGHTSEEING

CORPORATION  
OPERATING

AMERICAN SIGHTSEEING TOURS  
TOURS AND SCHEDULES

AIR-CONDITIONED BUSES

- ★ TOURS EVERY 15 MINUTES
- ★ Come to office for free parking
- ★ Call us for free pickup service any-  
where in downtown area
- ★ SEE YOUR TRAVEL AGENT

We Have  
NO STREET SALESMEN

This brochure distributed by  
Washington Convention and  
Visitors Bureau



519 SIXTH STREET, N.W.

(On U. S. No. 1 & 50 Between E and F Streets)

WASHINGTON, D. C. 20001

Phone: 393-1616

(AREA CODE 202)

KEY TO NUMBERS — MAIN POINTS OF INTEREST ON TOURS

TOUR NO. 1  
GOVERNMENT BUILDING INTERIOR TOUR  
NO. 1 THROUGH NO. 4

\$8.00

Visiting the interiors of four important government buildings, covering the branches of the U.S. Government. Tourguide lecture service between the buildings; guided tour in the Capitol Building.

Average time — 4 hrs.  
9:00 A.M.—All Year.

TOUR NO. 2  
CITY-ARLINGTON TOUR

\$7.00

RIDING LECTURE TOUR OF 5 THRU 69  
PLUS STOPS TO VISIT 50-59-61-62-63-64

Lectured observation tour viewing No. 5 through No. 68 plus INTERIOR OF THE LINCOLN MEMORIAL. Complete city of Washington tour, plus Arlington National Cemetery with stops to visit the graves of John and Robert Kennedy and to the Tomb of the Unknown Soldier to witness the Changing of the Guard ceremonies.

2½ to 4 hrs. 9:00 A.M. & 2:00 P.M. Daily. April 1—Oct. 31 (Sun. 2 P.M. only) 1:30 P.M. Daily. Nov. 1—March 31.

TOUR NO. 3  
MT. VERNON AND ALEXANDRIA

\$9.00

16 MILE TOUR OF VIRGINIA COUNTRYSIDE  
VISITS TO INTERIORS OF 70-71-77-78-79-80

with boat  
Apr.-Sept.  
\$11.50

We go to Mt. Vernon, Virginia and visit Geo. Washington's home — the mansion, kitchen, carriage house, tomb, and the beautiful grounds, and Alexandria, the home town of Geo. Washington. The boat cruise one way is used at extra charge when it operates . . . usually April to September.

3 to 4 hrs.  
1:30 P.M. April 7 thru Oct. 1. 9:00 A.M. Oct. 1 thru April 7.

TOUR NO. 4  
BUILDING-CITY-ARLINGTON TOUR

\$14.00

NO. 1 THROUGH NO. 69  
Plus Interiors of No. 1 Through No. 4

This popular tour is a combination of TOURS No. 1 and No. 2. Going through the four important government buildings, viewing the IWO JIMA MEMORIAL, and the PENTAGON BUILDING, stopping at the LINCOLN MEMORIAL to visit the interior, as well as seeing Washington generally — the government area, embassies and legations. Tour of Arlington National Cemetery, stopping at the TOMB OF THE UNKNOWN SOLDIER to see the beautiful military ceremonies at the CHANGING OF THE GUARD, and visiting the KENNEDY GRAVES.

Average time 7 hrs. with time out for lunch. 9:00 A.M. Daily. All Year.

TOUR NO. 5  
'MT. VERNON' ALL DAY TOUR

\$16.00

NO. 1 THROUGH NO. 4  
AND 70 THROUGH 80

with boat  
Apr.-Sept.  
\$18.50

This all-day tour combines the complete itineraries of TOUR NO. 1 and TOUR No. 3 — the Interiors of the important government buildings, Alexandria and Mt. Vernon, Va. When the boat operates (April-September) the cruise from Mt. Vernon will be by boat at extra charge.

Approx. time 7½ hrs. 9:00 A.M. Daily. All Year.

ANY TOUR MAY BE JOINED DURING THE DAY — EVERY 15 MINUTES!

INTERIORS OF GOVERNMENT BUILDINGS

- 1 U.S. CAPITOL (U.S. Senate and House of Representatives)
- 2 Bureau of Engraving (See money being made)
- 3 Smithsonian (First Ladies Gowns, Old Autos, etc.)
- 4 The White House

BEAUTIFUL CITY OF WASHINGTON

- 5 Financial District
- 6 Dolly Madison Home
- 7 Reconstruction Finance Corp.
- 8 Veterans Administration
- 9 Lafayette Square
- 10 St. John's Episcopal Church
- 11 AFL & CIO Headquarters
- 12 Motion Picture Ass'n of America
- 13 Carlton and Statler Hotels
- 14 Gas Light Club
- 15 Nat'l Education Ass'n
- 16 Nat'l Geographic Society
- 17 Winfield Scott Statue
- 18 Daniel Webster Statue
- 19 St. Matthews Cathedral (Where Kennedy Funeral was held)

- 20 Henry Wadsworth Longfellow Statue
- 21 John Witherspoon Statue
- 22 Dupont Circle and fountain
- 23 Sulgrave Club
- 24 Eleanor Patterson Home
- 25 Home of Alice Roosevelt Longworth
- 26 Home of Tom Walsh
- 27 Lars Anderson Home
- 28 Cosmos Club
- 29 Embassy Row
- 30 Luxemburg Embassy
- 31 Turkish Embassy
- 32 Irish Embassy
- 33 Greek Embassy
- 34 Swedish Embassy
- 35 Philippine Embassy
- 36 Korean Embassy
- 37 Phil Sheridan Statue (Gutzon Borglum—Sculptor)

- 38 Rumanian Embassy
- 39 Famous Buffalo Bridge
- 40 Old Georgetown
- 41 Dumbarton House
- 42 Jacqueline Kennedy Home
- 43 'Narrowest' House
- 44 C&O Canal and Locks
- 45 Georgetown Waterfront
- 46 Rock Creek Park
- 47 Kennedy Center for Performing Arts
- 48 Department of State
- 49 Watergate Complex
- 50 LINCOLN MEMORIAL
- 51 Tidal Basin and Japanese Cherry Trees
- 52 Jefferson Memorial

ARLINGTON NATIONAL CEMETERY

- 53 Robert E. Lee Mansion
- 54 Fort Myer
- 55 Netherlands Carillon
- 56 Iwo Jima Memorial
- 57 ARMED SERVICES GATES
- 58 Visitors Center
- 59 KENNEDY GRAVES (With Eternal Flame)
- 60 Sir John Dill Statue
- 61 TOMB OF THE UNKNOWN SOLDIER (1st and 2nd World War and Korean War)
- 62 MEMORIAL AMPHITHEATRE
- 63 TROPHY ROOM (Unknown Soldier)
- 64 CHANGING OF THE GUARD CEREMONY
- 65 PENTAGON BUILDING
- 66 Admiral Byrd Statue
- 67 Theodore Roosevelt Island
- 68 Beautiful Arlington Memorial Bridge
- 69 Potomac River

ALEXANDRIA, VIRGINIA

- 70 Geo. Washington's Home Town
- 71 Christ Church
- 72 Gadsby's Tavern
- 73 Carlyle House
- 74 Geo. Washington Masonic Memorial
- 75 Old Presbyterian Meeting House Tomb of Unknown Soldier of Revolutionary War
- 76 Boyhood Home of Robert E. Lee

MOUNT VERNON, VIRGINIA

- 77 Geo. Washington Mansion
- 78 Tomb of Geo. and Martha Washington
- 79 Museum and original Houdon bust
- 80 Geo. Washington's Gardens

FEDERAL BUREAU OF INVESTIGATION

- 81 Guided Tour through F.B.I.
- 82 NATIONAL ARCHIVES (See originals of Declaration of Independence, Constitution and Bill of Rights)

NATIONAL HISTORIC WAX MUSEUM

- 83 A walk among lifelike figures showing events of American History

WASHINGTON MONUMENT

- 84 Elevator Tour to Observation Tower (See Washington and surrounding area)

TOUR NO. 6  
'F.B.I.' ALL DAY TOUR

\$14.00

(COMBINATION OF TOURS NO. 2 AND NO. 8)  
POINTS OF INTEREST NO. 5 THRU 69 PLUS  
81, 82, AND 83

Complete itinerary of TOURS NO. 2 and 8 including the FEDERAL BUREAU OF INVESTIGATION guided tour.

Approx. 7 hrs. 9:00 A.M.—Mon. thru Fri.—All Year.

TOUR NO. 7  
MT. VERNON-CITY-ARLINGTON TOUR

\$16.00

(COMBINATION OF TOURS NO. 2 AND NO. 3)

with boat  
Apr.-Sept.  
\$18.50

Complete itinerary of TOURS NO. 2 and 3 with stop for lunch in between in the downtown government area.

Approx. 8 hrs. 9:00 A.M. Daily. All Year.

TOUR NO. 8  
SPECIAL BUILDING INTERIOR TOUR  
(Visit to No. 81, 82 and 83)

\$8.00

Includes a guided tour thru the F.B.I. — a walk thru the historic Wax Museum to see life like figures of important events in history — a stop at the National Archives to see the originals of the Declaration of Independence and Constitution.

Approx. 3½ hrs. 1:30 P.M. Mon. thru Fri. April 7 thru Oct. 1. 9:00 A.M. Mon. thru Fri. Oct. 1 thru April 7.

TOUR NO. 9  
DELUXE ALL DAY TOUR

\$21.00

WASHINGTON, ARLINGTON, ALEXANDRIA AND  
MT. VERNON

Combination of Tours No. 2 and No. 3 plus interior of the White House — a guided tour of the U.S. Capitol and the boat trip to Mt. Vernon one way at no extra charge when available.

Approx. 8 hrs. 9:00 A.M. Daily. All Year.

TOUR NO. 10  
BEAUTIFUL WASHINGTON AT NIGHT

\$8.00

Beautiful Washington by night — lectured city tour of the Government area — with emphasis on the White House and Capitol — as lighted at night — monuments and memorials — stopping at the Jefferson Memorial and the Lincoln Memorial to visit the interiors — a stop at the Washington Monument and a trip to the top by elevator.

Approx. 2½ hrs. 7:30 P.M. Mon. thru Fri. April 1st thru Oct. 31

TOUR NO. 11  
TWO DAY TOUR  
(No. 1 thru No. 83)

\$28.50

with boat  
Apr.-Sept.  
\$31.00

This complete tour combines all of the itineraries of Tours No. 1, 2, 3 and 8 which also takes in everything included in Tours No. 5 and 6. Will use boat to Mt. Vernon one way at extra charge when operating.

2 days. Any two of the week.  
9:00 A.M. Daily. April 1st thru Oct. 31.



# Welcome to Washington

And welcome to a great new way to see our capital city's historic sights—by Tourmobile.

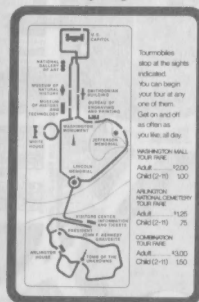
It's the easy, convenient and inexpensive way to see Washington, D.C. and Arlington National Cemetery. And you set your own pace because you may reboard a Tourmobile any time you want.

Also, we tell you details of the following things and many more you can see in the **Washington Mall Area**.

- Demographic Clock—see the U.S. population grow each second
- Daily printing of stamps and currency—valued at \$50 million
- The site of Tiber Creek which is now Constitution Avenue
- Original Constitution, Bill of Rights, and Declaration of Independence
- The largest steam locomotive on exhibit
- An 858 carat emerald
- Salvador Dali's "The Last Supper"
- The "Red Castle" on the Mall
- Moon Rocks
- The only Leonardo da Vinci painting in the Western Hemisphere
- Botanic Garden—plants of the U.S. in their native environment
- Theodore Roosevelt Island—88 acre wilderness preserve
- The third largest dome in the world
- Washington's 111 acre man-made lake
- Two shades of marble in the Washington Monument
- FBI tour including exhibits and demonstrations
- Largest complex of buildings in the world controlled by women
- The Smithsonian Institution Buildings
- One of the world's largest doll houses
- Inaugural Ball gowns of our "First Ladies"
- The world's largest cut blue diamond
- A life-sized replica of the world's largest mammal
- The Wright brothers' "Kitty Hawk"
- A Lunar Excursion Module

And at **Arlington National Cemetery**, where the history of the United States is engraved in stone, your tour will show you these things and more.

- President John F. Kennedy gravesite
- President William Howard Taft gravesite
- The gravesite of Senator Robert F. Kennedy
- The graves of six American astronauts
- The Tomb of the Unknowns (The Changing of the Guard)
- Arlington House, home of Robert E. Lee
- The Mast of the Battleship Maine
- The Confederate War Memorial



**Combination Tour** — includes making stops at all sites listed below under Washington and Arlington Tours. (Tickets available from Tourmobile driver or at Arlington Visitors' Center.)

## Washington Mall Tour

Tourmobiles stop at these eleven sites:

- U. S. Capitol (Building)
- Washington Monument
- Smithsonian Institution
- National Gallery of Art
- Museum of Natural History
- Museum of History & Technology
- Bureau of Engraving & Printing
- Jefferson Memorial
- Lincoln Memorial
- Arlington Visitors' Center
- White House
- Kennedy Center (Proposed Route)

Begin your tour at any site; purchase ticket on board Tourmobile. Good for unlimited reboarding during day of ticket purchase.

## Arlington National Cemetery Tour

Purchase ticket from Visitors' Center where tours begin. Then proceed to visit the following sites:

- President John F. Kennedy Gravesite
- Senator Robert F. Kennedy Gravesite
- Tomb of the Unknowns (Guard changing)
- Arlington House (Custis-Lee Mansion)
- Visitors' Center

Express Routes (unnarrated) proceed from the Visitors' Center to the Tomb of the Unknowns or from the Visitors' Center to Arlington House.

FARES	COMBINATION TOUR #1	WASHINGTON D.C. MALL #2	ARLINGTON NATIONAL CEMETERY #3
Adult	\$3.50	\$2.50	\$1.25
Child (2-11)	1.75	1.25	.75
Military & Clergy	3.25	2.25	1.10

Group Information: For group rates and special arrangements, contact Sales Office, Tourmobile, 900 Ohio Drive, S.W., Washington, D.C. 20024, or call (202) 737-7880.

**Washington, D.C. Tour hours.** Tourmobiles operate daily, except Christmas Day. 9 am to 6:30 pm (June 15 thru Labor Day). 9:30 am to 4:30 pm (Remainder of the year). Last complete tour begins one hour prior to closing.

**Arlington National Cemetery Tour hours.** Tourmobiles operate every day. 8 am to 5 pm (November thru March). 8 am to 7 pm (April thru October). Last complete tour begins one hour prior to closing. Prices and hours subject to change.



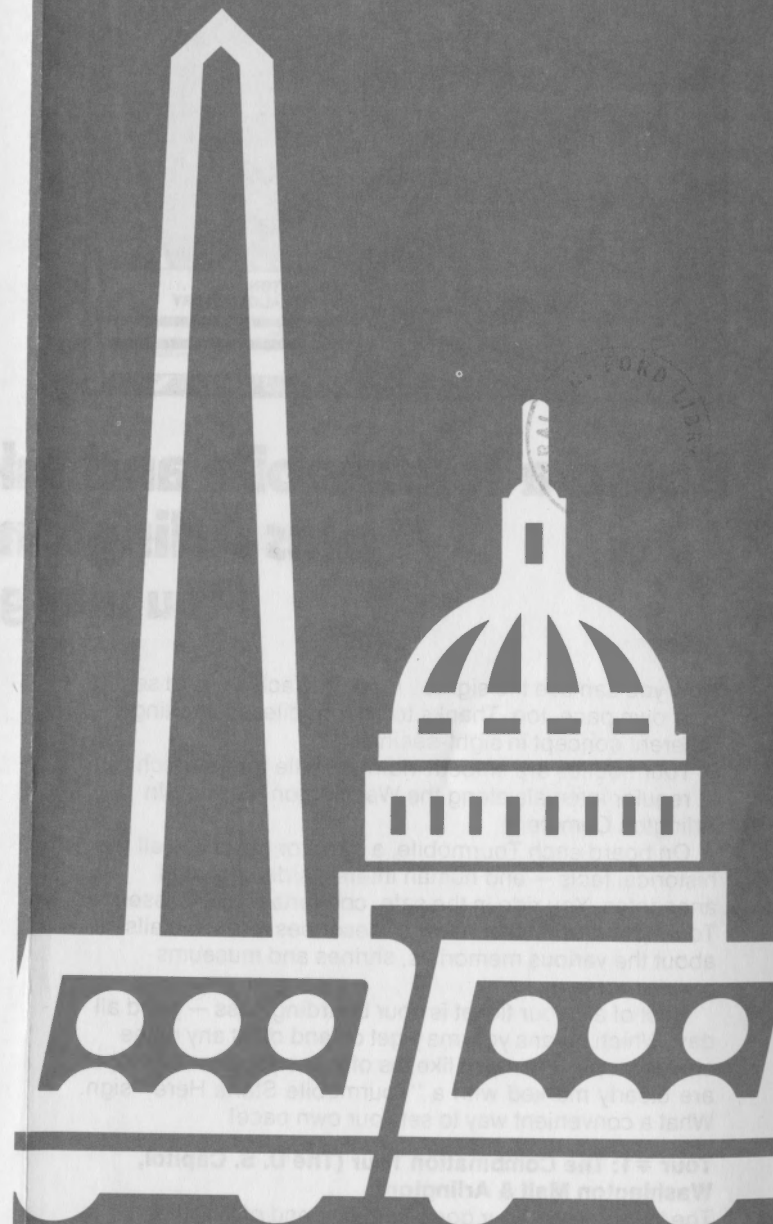
Division of Landmark Services, Inc.  
900 Ohio Drive, S.W., Washington, D.C. 20024 (202) 638-5371  
©Copyright 1974, Landmark Services, Inc. 1-74 Printed in U.S.A.



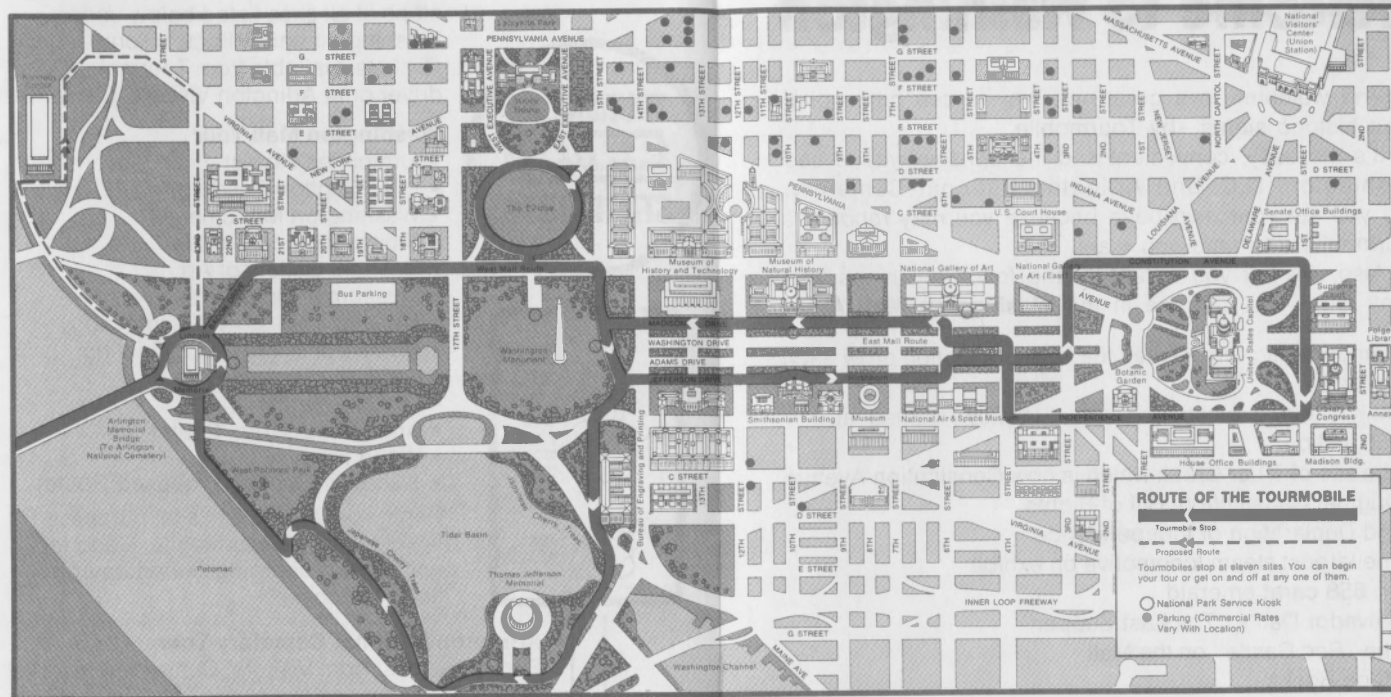
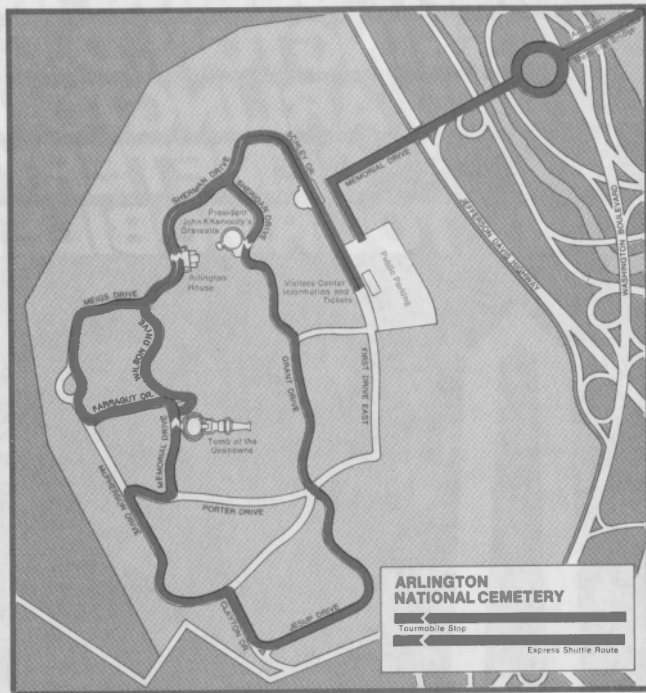
## Visit the Mount Vernon Inn

When you're in the Washington, D.C. area, be sure to visit the beautiful colonial home of George Washington. And allow time for a visit to our Gift House and a snack or superb meal at our Mount Vernon Inn.

# SIGHT-SEEING IN WASHINGTON, D.C. AND ARLINGTON CEMETERY BY TOURMOBILE.



Tourmobile of Landmark Services, Inc., is the concessioner sight-seeing service on the Washington, D.C. Federal Mall and Arlington National Cemetery, authorized by the United States Department of the Interior, National Park Service.



## Board a Tourmobile and take a complete tour of the U.S. Capitol, Washington Mall plus Arlington Cemetery at a special combination rate. (You may get on and off all day at no additional cost.)

Now you can see the sights . . . get the facts . . . and set your own pace, too. Thanks to Tourmobile, an excitingly different concept in sight-seeing.

Tourmobiles are smooth-riding shuttle trams which run at regular intervals along the Washington Mall and in Arlington Cemetery.

On board each Tourmobile, a narrator gives you all the historical facts — and human interest sidelights and anecdotes. You ride in the safe, comfortable 88-passenger Tourmobile, while the narrator describes all the details about the various memorials, shrines and museums on your route.

Best of all, your ticket is your boarding pass — good all day. Which means you may get on and off at any of the eleven stops, when you like, as often as you like. All stops are clearly marked with a "Tourmobile Starts Here" sign. What a convenient way to set your own pace!

### **Tour #1: The Combination Tour (The U. S. Capitol, Washington Mall & Arlington)**

The Washington Tour goes from one end of Washington's world-famous Federal Mall to the other . . . stopping at all the major monuments, memorials and renowned buildings along the way: the U. S. Capitol, the Smithsonian

Institution, the Lincoln Memorial, and many others. (See back of brochure for complete list of stops.)

Then the Tourmobile continues across the Potomac River to Virginia for a tour of one of the nation's most cherished shrines — Arlington National Cemetery. You'll visit the gravesite of President John F. Kennedy; view the changing of the guard at the Tomb of the Unknowns; and wander through Arlington House, the home of General Robert E. Lee, and other areas of historical interest within the grounds.

Combination Tour available at special discount (see back panel for fares). Both tours must be taken the same day. Tickets may be purchased on the Washington Mall from any Tourmobile driver, or at the Arlington Visitors' Center.

### **Tour #2: The U. S. Capitol and Federal Mall Tour**

If you wish, you may take the Tourmobile around the Washington Mall only. You'll see all that you see on the Washington part of the Combination Tour. And, of course, you can get off and "explore" any time you wish. Then just hop aboard the next Tourmobile and continue your tour.

### **Tour #3: The Arlington Cemetery Tour**

This tour begins at the Arlington Visitors' Center. Purchase your ticket at the ticket booth, then visit all the areas within the Arlington grounds offered in the Combination Tour. Special express trips (unnarrated) are offered from the Visitors' Center to the Tomb of the Unknowns or from the Visitors' Center to Arlington House.

### **Tourmobile: The most convenient, inexpensive way to see the sights in Washington, D. C. and Arlington National Cemetery.**

All Tourmobile stops are within easy walking distance of every major site on the Mall and in Arlington. Which means no traffic, no worries, and you save gas. Just leave your car at your hotel or a nearby parking lot and take a bus or taxi — or walk — to the nearest Tourmobile stop.

And now you have three Tours to choose from, so you can schedule your own sight-seeing in Washington, D. C.

It was never easier!





## EXECUTIVE PROTECTIVE SERVICE

To: Officer-in-charge  
Appointments Center  
Room 060, OEOB

Please admit the following appointments on June 12, 1975  
for Philip W. Buchen of White House:  
(Name of person to be visited) (Agency)

### Chaperones

Reverend David DeVore  
Mr. Daniel Iron Cloud  
Mr. Derril Wright

### Boys

Andrew Bear Shield  
Ambrose Belt  
Danny Cloud  
James Cloud  
Junior Iron Cloud  
Richard Good Weasel  
Calvin Long Soldier  
Brian Rodlund  
Don Slow Bear  
Raymond Stands  
Ronnie Ten Fingers  
Don Yellow Hair  
Lonnie Yellow Hair

### MEETING LOCATION

Building White House  
Room No. 2nd Flr. W.W.  
Time of Meeting 9:30 a.m.

Requested by Jackie Mooneyhan  
Room No. \_\_\_\_\_ Telephone 2633  
Date of request June 12, 1975

Additions and/or changes made by telephone should be limited to three (3) names or less.

DO NOT DUPLICATE THIS FORM.

Friday 6/6/75

*Indians*

Meeting

6/12/75

(9:30 a.m.)

4:05 Dr. Marrs' office was scheduling meetings for  
the Indian boys from the Bishop Hare Home.

The boys will come over to meet with you  
on Thursday 6/12 at 9:30 a.m.

(attached list)



THE WHITE HOUSE

WASHINGTON

June 6, 1975

MEMORANDUM FOR: PHIL BUCHEN

FROM: TED MARRS *Ted*

Enclosed is a copy of the itinerary for the boys from the Bishop Hare Home and a list of their names for your visit with them on Thursday, June 12, at 9:30 A.M.



THE WHITE HOUSE

WASHINGTON

June 6, 1975

June 6, 1975

THE HILL 9:00 AM (Senator McGovern)

Lunch - Hogates 1:30 PM

Baltimore Orioles 7:30 PM

June 7

Kennedy Center Matinee - Present Laughter (Begins at 2:00 PM)

Kennedy Center Evening - D.C. Youth Orchestra (Begins at 8:30 PM)

June 8

Morning Free (Zoo ??)

Cook out at Dr. Marrs' Home 4:00 PM

June 9

Morning Free

Dr. Emery Johnson - 2:00 PM (Will be picked up by Dr. Johnson's driver)  
(Call 443-1083)

Senator Abourezk 4:00 PM

Grace Thorpe 4:30 PM

June 10 - 11

Norfolk

June 12

TOUR OF THE WHITE HOUSE - 8:00 AM

Mr. Buchen's Office - 9:30 AM

Mr. Bill Youpee (National Tribal Chairman's Council) (2:00 PM)  
1701 Pennsylvania Avenue, N.W. Room 207 Wash., D.C. 20006

Mr. Barney Old Coyote and Dr. Ben Reifle 3:30 PM  
1701 Pennsylvania Avenue, N.W. Room 310 Wash., D.C. 20006

June 13

Depart for Mission, South Dakota



BISHOP HARE HOME  
Mission, South Dakota

Chaperones

1 Rev. David DeVore  
3 Mr. Derril Wright  
2 Mr. Daniel Iron Cloud

Indian Boys

Don Yellow Hair  
Brian Rodlund  
Andrew Bear Shield  
Don Slow Bear  
Lonnie Yellow Hair  
Junior Iron Cloud  
Danny Cloud  
James Cloud  
Ronnie Ten Fingers  
Ambrose Belt  
Raymond Stands  
Calvin Long Soldier  
Richard Good Weasel





# BISHOP HARE HOME

Mission, South Dakota 57555  
Telephone (605) 856-4537

For file  
P.

The Rev. David G. DeVore  
Executive Director

Mr. Derril H. Wright  
Program Director

May 14, 1975

Dear Aunt Bunny and Uncle Phil,

Our trip plans have nicely coalesced this past week in terms of where we will be staying and other details. We will be staying and eating most meals at Virginia Theological Seminary in Alexandria. This was a welcome development as we were prepared to sleep in the parish hall of a church and do our own cooking using the church facilities. Our present arrangement will save us a lot of energy, psychic and otherwise, for enjoying the rest of the trip.

We will arrive June 2<sup>nd</sup> and leave the 13<sup>th</sup>. A typical day will see us spending the day sightseeing, back for supper at the seminary and the evening spent in informal recreation, much of it on the seminary grounds. I think we will have a fairly full schedule in terms of all the things there are to see and do — we've been exploring, with the help of Dr. Morris' staff and others, different special interests of some of the boys — but there will be a fair amount of flexibility possible.

Unfortunately, we've decided that Laurie and the baby will not be coming. There are a couple of reasons for this. One is that a woman from here will not be going and I would not be able to help as much as I might caring for Eric, so her enjoyment of the trip would be minimized by having to put so much caring into him. She is going to take part of the time to go to Wisconsin and visit with Liza and Ayber before they leave for Turkey.





I think it is true to say that the staff and kids are looking forward to the trip immensely. Certainly the staff believes this will be a very broadening experience for all the boys — none of them have even been further east than Sioux Falls, South Dakota.

We hope that you are both well, and that your work is progressing satisfactorily also.

Sincerely,  
Laurie and Deird



THE WHITE HOUSE

WASHINGTON

April 28, 1975

Dear Laurie and Derril:

It was good news to hear that your plans for a trip to Washington are coming along well. I am glad that Dr. Marr's was of special help to you. He is a very thoughtful man, and I know that one of the highlights of your visit here will be the opportunity to visit with him.

We were pleased to hear that son Eric is doing well, and we hope to have a chance to see him as well as you in Washington. Please let us know your exact schedule as soon as it is available.

Love to both of you.

Sincerely,

*Philip (Uncle)*

Philip W. Buchen  
Counsel to the President

Mr. & Mrs. Derril H. Wright  
Program Director  
Bishop Hare Home  
Mission, South Dakota 57555





THE WHITE HOUSE  
WASHINGTON

April 28, 1975

*Wright  
Derril H.  
+  
Laurie*

Dear Laurie and Derril:

It was good news to hear that your plans for a trip to Washington are coming along well. I am glad that Dr. Marrs was of special help to you. He is a very thoughtful man, and I know that one of the highlights of your visit here will be the opportunity to visit with him.

We were pleased to hear that son Eric is doing well, and we hope to have a chance to see him as well as you in Washington. Please let us know your exact schedule as soon as it is available.

Love to both of you.

Sincerely,

*Philip (Uncle)*

Philip W. Buchen  
Counsel to the President

Mr. & Mrs. Derril H. Wright  
Program Director  
Bishop Hare Home  
Mission, South Dakota 57555





## BISHOP HARE HOME

Mission, South Dakota 57535  
Telephone (605) 856-4537

The Rev. David G. DeVore  
Executive Director

Mr. Derril H. Wright  
Program Director

April 14, 1975

Dear Aunt Bunny and Uncle Phil,

I just wanted to drop you a note telling you where the proposed trip of our boys to Washington has lead. - And to thank you for your part in the process.

Shortly after receiving your letter, we received one from Theodore C. Marrs inviting us on a "special" tour of the White House and offering to assist our trip in other ways also. Needless to say, we were very pleased and have been corresponding with him over details of the trip.

We plan to leave here the end of May, immediately after our school is out and spend ten days to two weeks in the Washington area. It is uncertain at this time whether Laurie and the baby will make the trip, but if they do, they will fly.

Eric is more alert every day. He's to the stage where I had naively figured he would be when he came out of the hospital. He's following with his eyes and turning his head as walk across the room, he's "talking" in short screams, etc. He is a joy to watch develop before your eyes.

We, of course, see and hear of you often in the public media. We remember you in our prayers. Thank you again.

Laurie & Derril





THE WHITE HOUSE  
WASHINGTON

*Wright  
Derril*

February 7, 1975

Dear Derril and Laurie:

It pleased me very much to receive your letter and to learn that you were thinking about bringing the boys in your charge to Washington for a visit sometime.

I have passed on a copy of your letter to the person in the White House who is responsible for reviewing requests of this type and I will let you know after I hear from him.

I am also delighted to hear about your son Eric and hope he will soon grow to be as fine a boy as Roderick's son, whose nickname is Eric.

Much love to both of you and best wishes for continued success in your program.

Sincerely,

*Uncle Phil*

Philip W. Buchen  
Counsel to the President

Mr. and Mrs. Derril H. Wright  
Program Director  
Bishop Hare Home  
Mission, South Dakota 57555



THE WHITE HOUSE  
WASHINGTON

February 8, 1975

MEMORANDUM FOR: TED MARRS

FROM: PHILIP BUCHEN

*P.W.B.*

Attached is a letter from my niece Laurie Wright and her husband Derril. Realizing that the matter of White House relations to the different groups of American Indians involves some troublesome issues, I would appreciate your considering this request entirely without regard to my involvement.

I would appreciate your comments.

Attachment





# BISHOP HARE HOME

Mission, South Dakota 57555  
Telephone (605) 256-4537



The Rev. David G. DeVore  
Executive Director

Mr. Derril H. W.  
Program Director

Jan. 23, 1975

Dear Uncle Phil,

We are both fine and keeping busy at Bishop Hare Home. At the present time we have 13 Indian boys.

The staff of the Home would like to bring all of the boys to Washington, D.C. for a visit sometime. We were wondering if it would be possible and proper for you to arrange a visit with President Ford. We were thinking sometime this academic year as a possibility. As you probably know, these boys are Episcopalian, plus the Home is supported by the Episcopal Church which is one tie-in with the President. We understand if it cannot be arranged.

Eric is doing fine. He is getting bigger everyday. Mom and Dad really enjoyed their stay out here. Hope things are going well with your job.

Love,  
Laurie and Derril

