

The original documents are located in Box 48, folder “General - Table Decorations” of the Betty Ford White House Papers, 1973-1977 at the Gerald R. Ford Presidential Library.

Copyright Notice

The copyright law of the United States (Title 17, United States Code) governs the making of photocopies or other reproductions of copyrighted material. Betty Ford donated to the United States of America her copyrights in all of her unpublished writings in National Archives collections. Works prepared by U.S. Government employees as part of their official duties are in the public domain. The copyrights to materials written by other individuals or organizations are presumed to remain with them. If you think any of the information displayed in the PDF is subject to a valid copyright claim, please contact the Gerald R. Ford Presidential Library.

THE WHITE HOUSE
WASHINGTON

January 23, 1975

Dear Mrs. Ford,

RE: Table Decorations for the upcoming State Dinners

The services of The Gazebo of New York, its top designer Jack Bangs, Mr. Bruce Johnson and his collection, and Dr. Fred Dockstadter and his collection, are all being donated to the White House for use during the upcoming State Dinners.

A preview showing of the table arrangements will be set up for Friday afternoon for your perusal.

Thank you.

Nancy L.



THE WHITE HOUSE
WASHINGTON

MEMORANDUM

January 23, 1975

FOR: MRS. FORD

FROM: NANCY LAMMERDING

SUBJECT: Information concerning the table decorations for
the upcoming State Dinners

The Gazebo of New York

The Gazebo of New York has been in existence since 1971. They are floral designers who have worked with clients on an international scale. They do much work in silk flowers and dry arrangements. Their two New York stores carry wicker furniture (probably the largest collection in the U.S.), quilts, pillows, baskets, and other items of Americana. The items are handmade; The Gazebo aims to encourage the crafts.

The owner of The Gazebo is Mrs. Virginia Mapel. The Gazebo's top designer is Jack Bangs. Clients have included Princess Grace Kelly, Paul Newman, Joan Crawford, I. M. Pei, and many other renowned members of the theatrical world, newspaper circles, and United Nations diplomatic corps.

The Decoy Collection

The Decoy Collection is a part of the Museum of American Folk Art in New York. The director of the Museum is Mr. Bruce Johnson. The Museum assembles four or five exhibitions a year, in which some aspect of American folk art is featured. Previous exhibitions have centered around hooked rugs and other needle arts, painted tinware, weathervanes, and Early American toys.

The Decoy Collection was received as a gift from Mr. Alastair B. Martin, a trustee of the Metropolitan Museum of Art in New York and noted collector of various art forms. Adele Earnest, a trustee and founder of the Museum of American Folk Art, is noted as an authority on decoys and has written The Art of the Decoy.



The Collection was shown at the Federal Pavilion at Expo '67 in Montreal. The Museum of American Folk Art exhibited the collection in 1968. Various other institutions have hosted the exhibit, including The Columbus Museum of Arts and Crafts, Columbus, Georgia; The Museum of Arts and Science, Port Huron, Michigan; and The Hopkins Center Art Galleries, Dartmouth College, Hanover, New Hampshire.

The Indian Basket Collection

The Indian Basket Collection is housed by the Museum of the American Indian in New York. The Museum's director is Dr. Fred Dockstadter. The Museum was founded by Dr. George G. Heye, a collector of Indian items.

The Museum has the largest Indian collection in the world. Articles come from North, Central, and South America. Special exhibitions are also arranged by the Museum. The upcoming exhibition will feature the paintings of a noted Navajo artist.





STEUBEN GLASS

GERALD R. FORD LIBRARY

ITEM TRANSFER FORM

The item described below has been transferred from this file to:

- ☒ Audiovisual Unit
- ☐ Oversized Container
- ☐ Book Collection
- ☐ Ford Museum in Grand Rapids

Item:

7 6x12 photos of crystal decorations

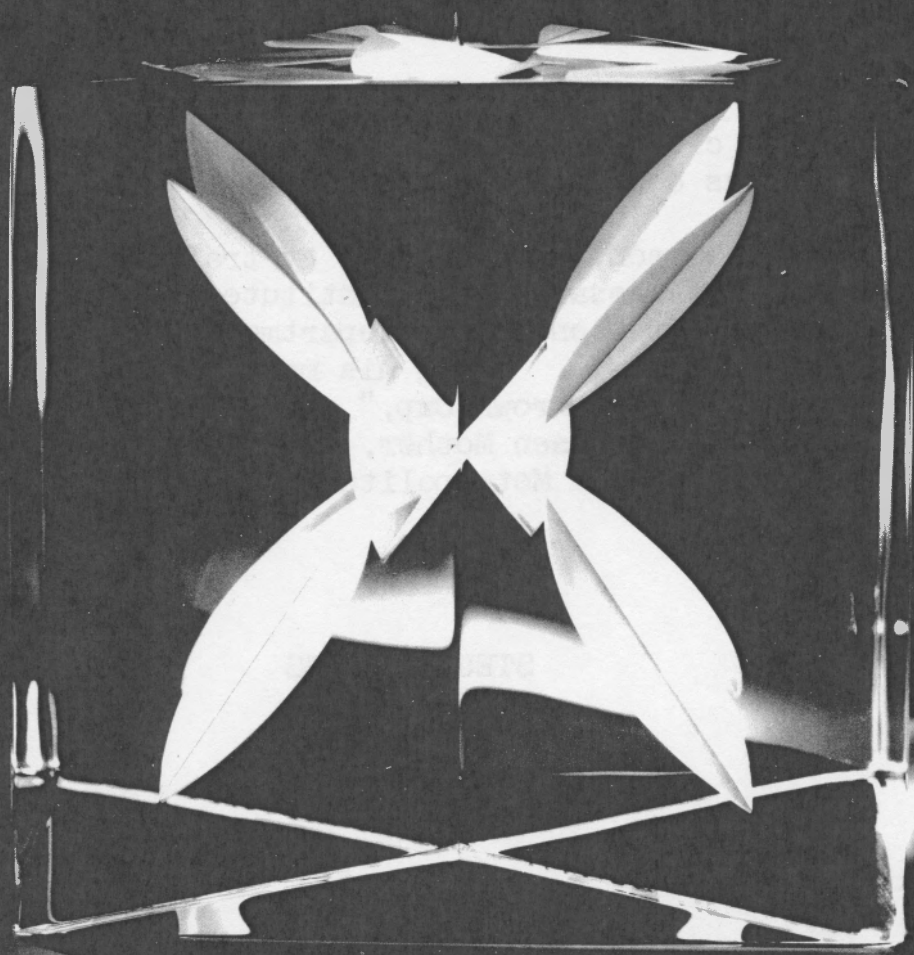
The item was transferred from:

Betty Ford White House Papers

Box: 48

Folder: State Visits: General Table Decorations

Initials/Date: JJO 3/20/2018



CUT PRISM

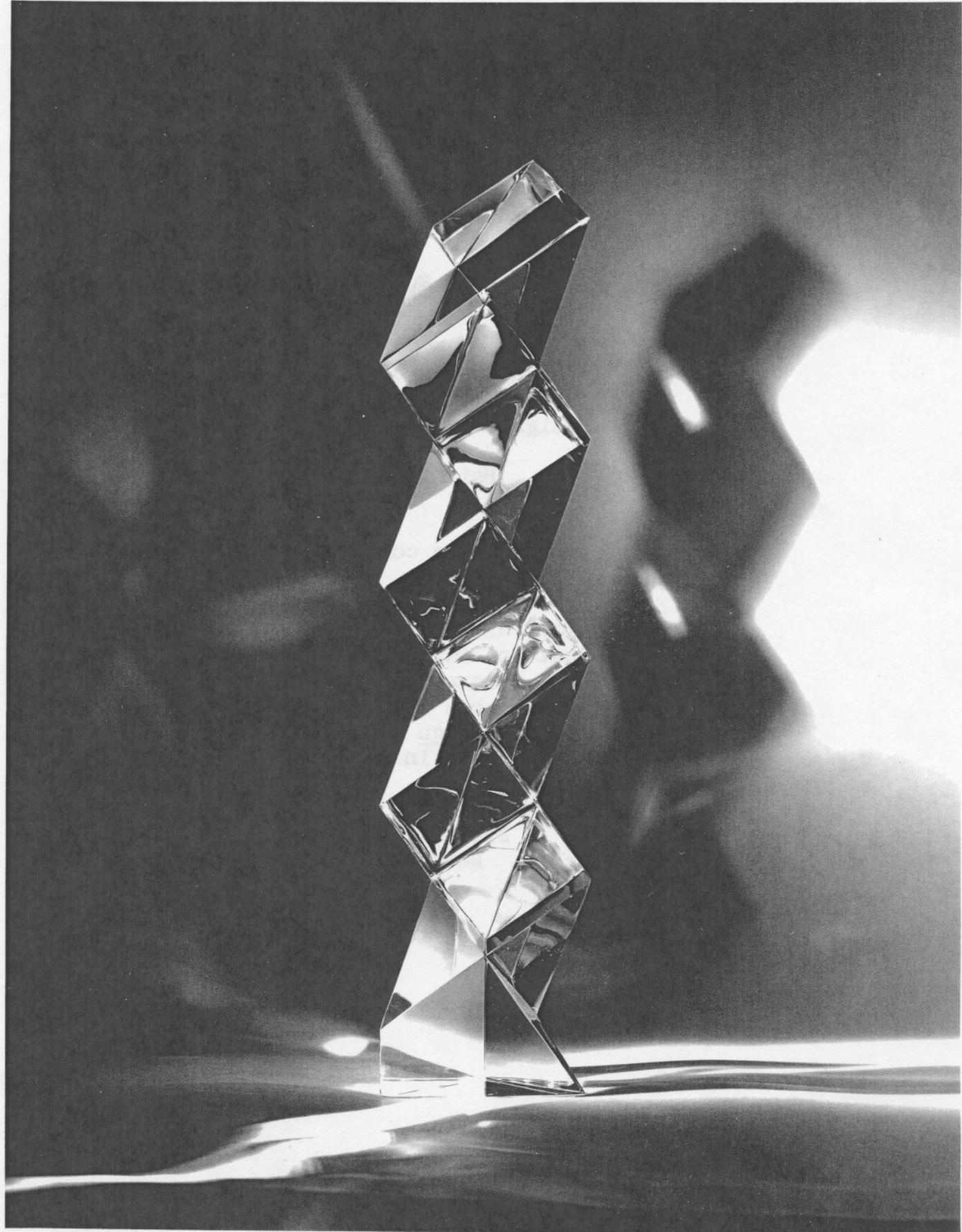
Designed by George Thompson

Height 8" • Width 8"

Prism of clear crystal, within which internal cuts reflect as double crescents.

George Thompson, an architect by training and a graduate of Massachusetts Institute of Technology, joined the Steuben design department upon its formation in 1936. Among his many designs for Steuben are "The Crown Cup," collection of Queen Elizabeth, The Queen Mother, and "Cathedral," collection of The Metropolitan Museum of Art, New York.

STEUBEN GLASS
New York



PRISMATIC COLUMN

Designed by Paul Schulze

Height 16"

Column composed of a continuous series of right-angled prisms.

Paul Schulze, director of Steuben design, is a graduate of Parsons School of Design, where he now teaches, and of New York University. He has illustrated articles for Industrial Design magazine and a book, Organics, published in 1961.

STEUBEN GLASS
New York



HYPERBOLAS

Designed by George Thompson

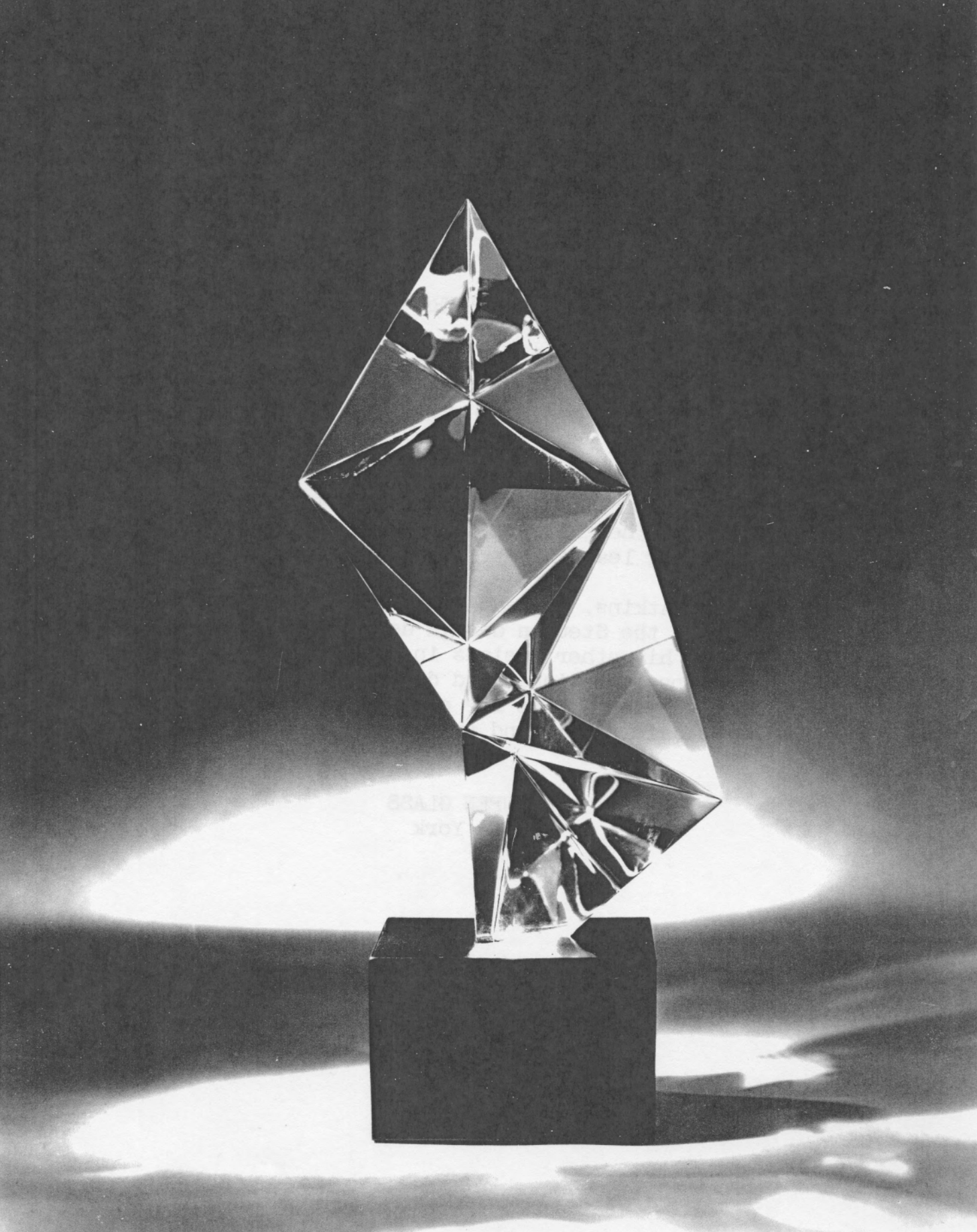
Height 12" • Width 4"

Tall, rectangular crystal block, its front and back each deeply cut in a narrow arch -- one pointing up, the other pointing down.

George Thompson, an architect by training and a graduate of Massachusetts Institute of Technology, joined the Steuben design department upon its formation in 1936. Among his many designs for Steuben are "The Crown Cup," collection of Queen Elizabeth, The Queen Mother, and "Cathedral," collection of The Metropolitan Museum of Art, New York City.

STEUBEN GLASS

New York



TETRAHEDRA

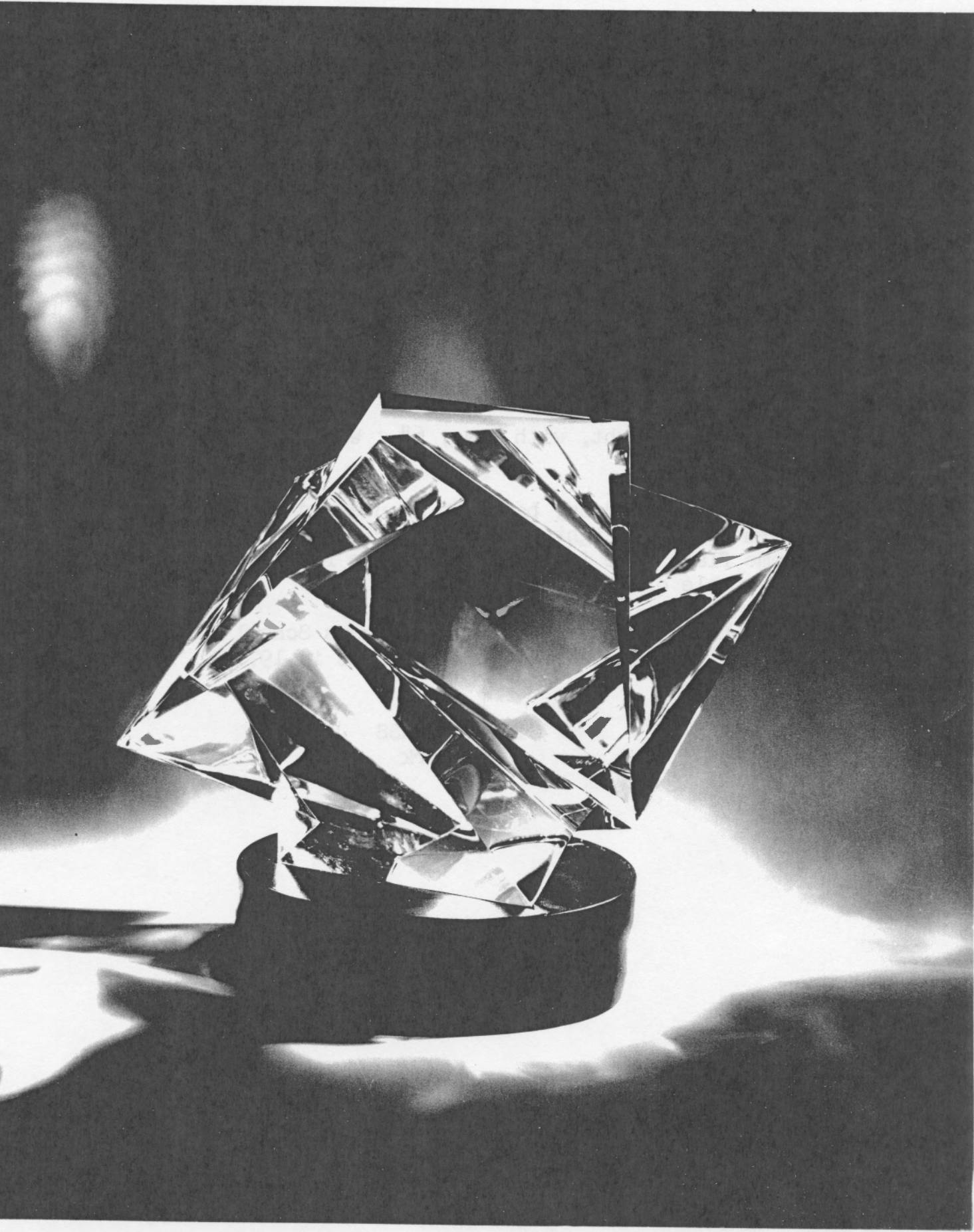
Designed by Lloyd Atkins

Height, with base, $12\frac{1}{2}$ " • Width 6"

A single spiral structure of clear crystal develops from the fusion of five tetrahedral forms. The glass rests on a rotatable base of black leather.

Lloyd Atkins, a graduate of Pratt Institute, joined the Steuben design department in 1948. Among his other designs in crystal are a score of representational and decorative figures and many crystal forms for engraving, now represented in public and private collections.

STEUBEN GLASS
New York



TRIANGLES

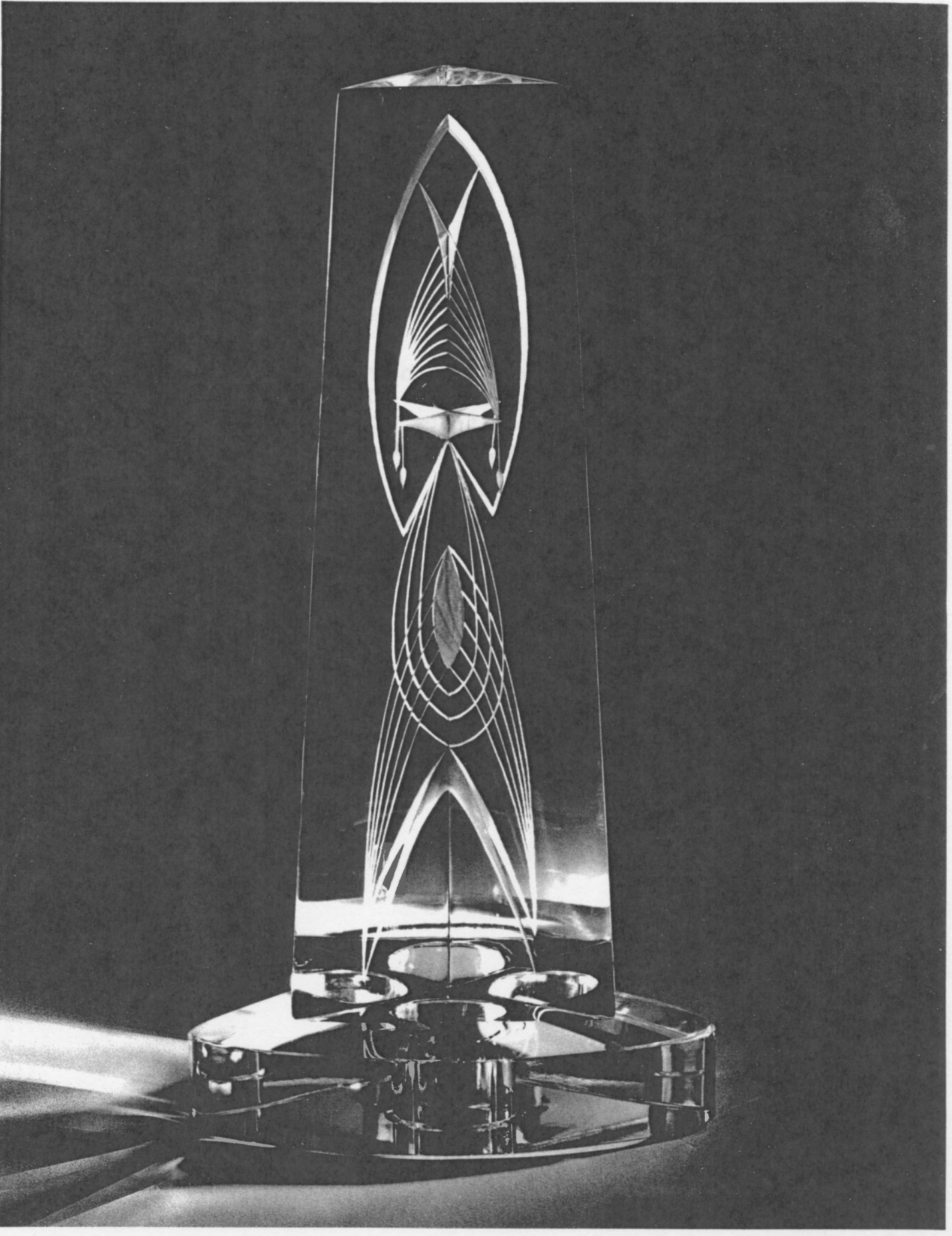
Designed by Rush Dougherty

Height, with base, 6" • Width $5\frac{3}{4}$ "

Crystal polyhedron, based on a cube and deeply cut to form multiple light-refracting triangular planes -- some flat, some incised. The piece rests on a low turntable of black leather.

Rush Dougherty, a graduate of Parsons School of Design, joined the Steuben design department in 1971.

STEUBEN GLASS
New York



ILLUSION

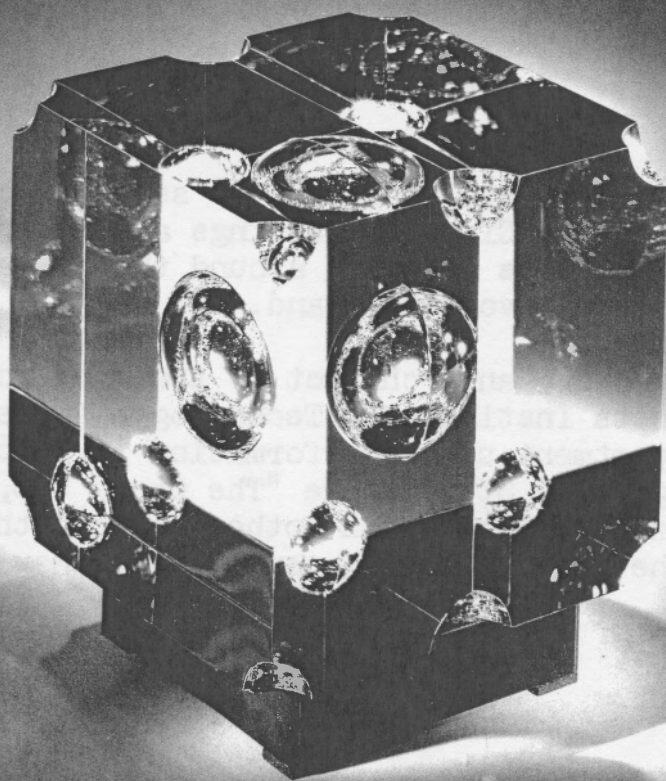
Designed by George Thompson

Height 9"

Prismatic form, engraved with an abstract design reminiscent of a frozen mobile. By optical illusion, the decoration appears to be suspended in three dimensions within the glass itself.

George Thompson, an architect by training, joined the Steuben design department upon its formation in 1936. Examples of his work have been shown in every major Steuben exhibition and are represented in museum collections in this country and abroad.

STEUBEN GLASS
New York



ONE PLUS ONE EQUALS THREE

Designed by George Thompson

Height 5" • Width 5"

Cube of clear crystal made of two sections cut to form a central sphere. Circular cuttings at the corners reflect as smaller spheres floating around the center. The crystal rests on a low revolving stand.

George Thompson, an architect by training and a graduate of Massachusetts Institute of Technology, joined the Steuben design department upon its formation in 1936. Among his many designs for Steuben are "The Crown Cup," collection of Queen Elizabeth, The Queen Mother, and "Cathedral," collection of The Metropolitan Museum of Art, New York City.

STEUBEN GLASS
New York



STEUBEN GLASS

FIFTH AVENUE AT FIFTY-SIXTH STREET • NEW YORK, N.Y. 10022
Telephone (212) PLaza 2-1441

CORNING GLASS CENTER • CORNING, N.Y. 14830
Telephone (607) 962-1060