

The original documents are located in Box 8, folder “12/16/76 - Pageant of Peace” of the Betty Ford White House Papers, 1973-1977 at the Gerald R. Ford Presidential Library.

Copyright Notice

The copyright law of the United States (Title 17, United States Code) governs the making of photocopies or other reproductions of copyrighted material. Betty Ford donated to the United States of America her copyrights in all of her unpublished writings in National Archives collections. Works prepared by U.S. Government employees as part of their official duties are in the public domain. The copyrights to materials written by other individuals or organizations are presumed to remain with them. If you think any of the information displayed in the PDF is subject to a valid copyright claim, please contact the Gerald R. Ford Presidential Library.

THE WHITE HOUSE

WASHINGTON

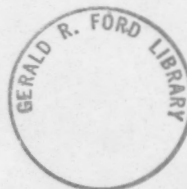
ANNUAL CHRISTMAS PAGEANT OF PEACE

THE ELLIPSE

THURSDAY - DECEMBER 16, 1976

Departure: 5:25 P.M.

From: Terry O'Donnell



BACKGROUND

This is the 22nd Annual Christmas Pageant of Peace Program and will be similar to previous years. The event, generally known as the lighting of the National Christmas Tree, is sponsored by the Pageant of Peace, Inc. and will be carried on LIVE NATION-WIDE TELEVISION.

Your participation will involve observing a brief program, delivery of remarks and, finally, with the aid of a Boy Scout and Girl Scout, throwing the switch to light the tree.

SEQUENCE

5:25 p.m.	You and Mrs. Ford board motorcade on South Grounds and depart Ellipse.
5:26 p.m.	Arrive Ellipse. Proceed on foot to offstage holding area.
5:29 p.m.	You and Mrs. Ford arrive offstage holding area and pause for announcement.
5:30 p.m.	"Ruffles and Flourishes" Announcement "Hail to the Chief"

2.

5:31 p.m.

You and Mrs. Ford proceed onstage
and take your seats.

LIVE NATIONWIDE TELEVISION

ATTENDANCE: 2,000

5:32 p.m.

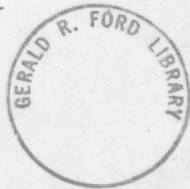
Remarks by Hon. Thomas Kleppe,
Secretary of Interior.

5:35 p.m.

Prayer for Peace by Most Rev.
Thomas W. Lyons, Auxiliary
Bishop of Washington.

5:36 p.m.

Musical selection by the San
Francisco Boys Choir.



5:40 p.m.

Greeting by Boy Scout Keith Dion Baker.

NOTE: Upon completion of his
remarks, Keith will shake hands
with you and return to his seat.

5:42 p.m.

Greeting by Girl Scout Janice Sween.

NOTE: En route the podium, Janice
will present Mrs. Ford with a banquet
of flowers. As she returns to her
seat, she will shake hands with you.

5:44 p.m.

Introduction of you by John W. Dixon.

5:45 p.m.

PRESIDENTIAL REMARKS.

LIVE NATIONWIDE TELEVISION.

5:53 p.m.

Remarks conclude. You return to your seat.

3.

5:54 p.m.

Musical selection by San Francisco Boys Choir.

5:58 p.m.

Benediction by Rev. John T. Tavlarides, Dean, St. Sophia Greek Orthodox Church.

6:00 p.m.

You ask the Boy Scout and Girl Scout to join you at the switch box (stage left) in lighting the National Christmas Tree.

With the two Scouts to your left, you place your hand on the switch box with that of the children and ask them to throw the switch.

6:02 p.m.

The tree is lighted.

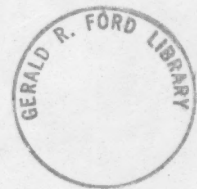
6:05 p.m.

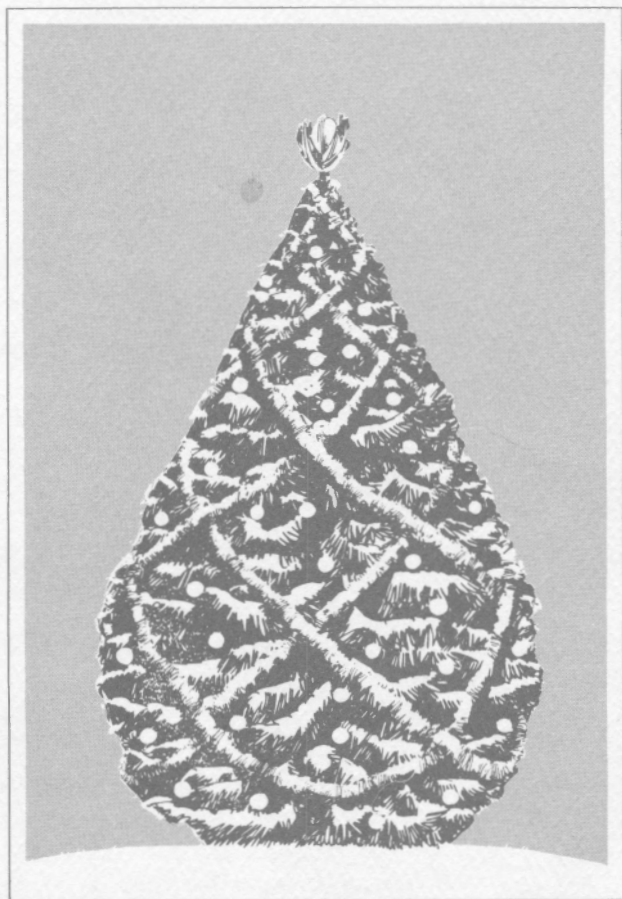
You and Mrs. Ford depart the stage and proceed to motorcade for boarding.

6:11 p.m.

Motorcade arrives South Grounds.

#####





The 1976 National Christmas Pageant of Peace

December 16 – January 1
The Ellipse – Washington, D.C.

The Christmas Pageant of Peace, Inc.

Officers

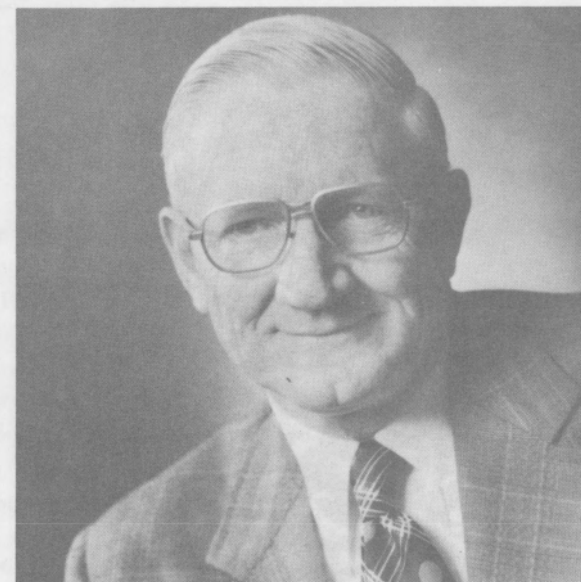
JOHN W. DIXON	<i>President</i>
GARY E. EVERHARDT	<i>Vice-President</i>
CLARENCE A. ARATA	<i>Vice-President</i>
JOHN P. COSGROVE	<i>Secretary</i>
ROBERT C. LAGASSE	<i>Treasurer</i>
ARTHUR J. LAMB	<i>Pageant Chairman</i>

Board of Directors

Wallace E. Carroll	Charles E. McKittrick, Jr.
J. Patrick Hayes	John R. O'Brien
Edwin K. Hoffman	Joseph H. Riley
Austin G. Kenny	William H. Rumsey
Robert F. Lederer	James P. Squires

Advisory Committee

J. Willard Marriott Marriott Corporation Washington, D.C.	Brian C. Elmer Jones, Day, Reavis, and Pogue Washington, D.C.
The Reverend John T. Tavlarides St. Sophia Greek Orthodox Cathedral Washington, D.C.	Elmer S. Atkins National Capital Region National Park Service
Manus J. Fish National Capital Region National Park Service	George Berklacy National Capital Region National Park Service
Joseph B. Danzansky Metropolitan Washington Board of Trade	Martin K. Schaller Executive Secretary District of Columbia



Welcome . . .

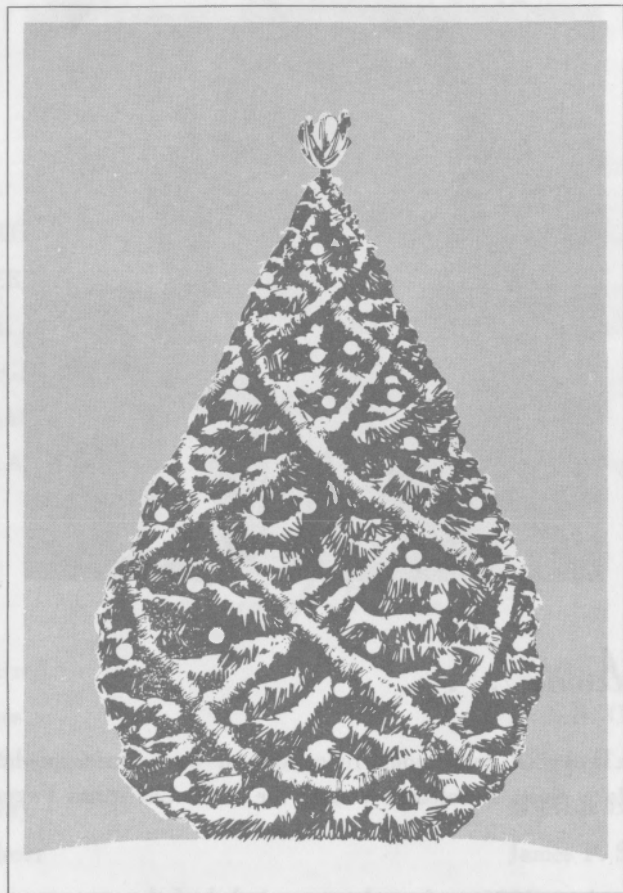
As a year of continuous reflection on our American heritage draws to a close, I welcome you to the 1976 Christmas Pageant of Peace.

Throughout 1976 we have been reminded of the past, even as we move steadily toward the future. We have paid tribute to the accomplishments of our ancestors while relying on the youth of America as we enter the third century, to carry forth our cherished traditions.

Once again we open our Christmas celebration with the lighting of the National Christmas Tree, a symbol of the illumination our leaders will need to guide us through a third century of peace and progress. May the spirit of brotherhood and goodwill expressed during the Pageant of Peace remain with all of us throughout the coming year.

Happy Holidays.

JOHN W. DIXON
President
Christmas Pageant of Peace, Inc.



This year's National Tree decorations, designed and provided by the General Electric Company, include 2,500 low-wattage, transparent red lamps with twinkle lamps added for a glittering effect. The color red, symbolizing youth, was chosen for the 1976 tree, to welcome the tricentennial and recognize the spirit of the youth of America and the role they will play in shaping the future of the country. Other decorations consist of 'starburst' ornaments ranging from 20 to 30 inches in diameter, one ornament representing each state and territory. The tree-top ornament consists of a series of upreaching shapes symbolizing the aspirations and ideals of youth, combined with an abstraction of the lamp of learning. Circular shapes, suggesting peace, good will, and brotherhood linking peoples of the world, are imposed within the lighted sculpture, which will have the appearance of stained glass by day and night.

Lighting for the trees is carefully selected to maintain the tradition of brightly lit trees while protecting the living trees and consuming a minimum of energy.

The Story of the Christmas Pageant of Peace

Since 1954 the nation's Christmas tree has been the focal point of the Christmas Pageant of Peace. A group of Washington, D.C., community leaders organized the Pageant of Peace that year to emphasize America's desire to maintain peace through the spirit and meaning of Christmas.

Nearly 20 years later, that hope gained a permanent, living symbol when the National Arborist Society donated a living National Community Christmas Tree. The 45 foot Colorado blue spruce was transplanted from northeastern Pennsylvania to its traditional spot on the Ellipse by the National Park Service.

The living tree replaces a series of cut trees donated by various states and trees growing on or near the White House grounds.

Calvin Coolidge lit the nation's first community Christmas tree in 1923 when a fir tree was set up on the White House South Lawn by Middlebury College from Coolidge's home state of Vermont.

Since Coolidge, every American president has participated in the lighting of a national community Christmas tree and the Pageant of Peace has become the traditional site for the President's annual Christmas greeting to the nation.

In addition to the main tree, the Pageant features the "Pathway of Peace," composed of 57 live Norway spruce trees donated by the Pageant of Peace Committee. They represent the nation's 50 states, six territories and the District of Columbia and symbolize the contributions each has made to the United States.

Extending from the National Community Tree, the "Pathway of Peace" also represents the individual support each American contributes to the entire nation. The trees are transplanted throughout the National Capital Region following the Pageant activities.

Other Christmas traditions are cheerful parts of the Pageant of Peace. A Yule Log burns day and night throughout the two weeks of the Pageant, offering a spot of warmth to the thousands of persons attending the outdoor festivities. Eight reindeer from the National Zoo are there, delighting visitors of all ages.

The 1976 Pageant of Peace opens December 16 and continues through January 1. There are free musical presentations beginning at 7 p.m. December 17 through 23, featuring seasonal music by bands and choruses from the Washington area and around the nation.

Program

Lighting of the National Christmas Tree

December 16, 1976

5:00 p.m.

Music by the United States

Air Force Band *Captain James M. Danielson, Conducting*

Sing-a-Long *Willard Scott, WRC-TV*

Welcome *John W. Dixon, President
Christmas Pageant of Peace, Inc.*

Invocation *The Reverend Kenneth D. Higginbotham
Assistant to the Bishop,
Episcopal Diocese of Washington*

Christmas Selection *San Francisco Boys Chorus
Dr. William Ballard, Music Director*

Christmas Greetings from the Citizens
of Washington, D.C. *Honorable Walter E. Washington
Mayor, District of Columbia*

Remarks *Joseph B. Danzansky, President
Metropolitan Washington Board of Trade*

Musical Selections *United States Air Force Band*

Program (continued)

Remarks *Honorable Thomas S. Kleppe
Secretary of the Interior*

Prayer for Peace *The Most Reverend Thomas W. Lyons, D.D.
Auxiliary Bishop of Washington*

Christmas Selection *San Francisco Boys Chorus*

Greeting from Boy Scouts of America *Keith Dion Baker*

Greeting from Girl Scouts of America *Janice Sween*

The Christmas Message *The President of the United States*

"We Wish You A Merry Christmas" *San Francisco Boys Chorus*

Benediction *Reverend John T. Tavlarides
Dean, St. Sophia Greek
Orthodox Cathedral*

LIGHTING OF THE NATIONAL CHRISTMAS TREE

Musical Selection *Performers and Audience Participate*

Closing Remarks *Mr. Dixon*

Musical Selection *Performers and Audience Participate*

The 1976 Christmas Pageant of Peace Evening Program

DECEMBER 17-23, 1976

7:00 - 9:30 p.m.

FRIDAY, DECEMBER 17

7:00 - 7:30 p.m.

CHOIR

Villa Victoria Academy Choir
Viola M. deVinney, Director
Trenton, New Jersey

7:30 - 8:00 p.m.

GOSPEL GROUP

Peggy Davis & The Gospel Warriors
Ed Gerald, Director
Washington, D.C.

8:00 - 8:30 p.m.

CHOIR

Greater Washington Area Council
Senior Citizens Choir
Jennie Jackson, Director
Washington, D.C.

8:30 - 9:00 p.m.

CHOIR

Sergeant Guilfoyle's Marching Band
Helen Guilfoyle, Director
Mitchellville, Maryland

9:00 - 9:30 p.m.

MADRIGAL SINGERS

First United Methodist Church
Will K. Andress, Director
Shreveport, Louisiana

SATURDAY, DECEMBER 18

7:00 - 7:30 p.m.

BAND

Glenelg High School Band
Barry Enzman, Director
Glenelg, Maryland

8:00 - 8:50 p.m.

GOSPEL GROUP

The McCollough Kings of Harmony
Spiritual Band
Ed Gerald, Director
Washington, D.C.

SATURDAY, DECEMBER 18

8:30 - 9:00 p.m.

CHOIR I SIGNS AND VOICE

Hands of Christmas
Robert Swasey, Advisor
Joyful Sign
Donna Gadling, Director
Gallaudet College
Washington, D.C.

9:00 - 9:30 p.m.

UNIVERSITY CHOIR

Cornell University
Pamoji Ni Singers
Memenda Jackson, Director
Ithaca, New York

SUNDAY, DECEMBER 19

7:00 - 7:30 p.m.

CONCERT CHOIR

Naperville North High School
Concert Choir
James A. Getty, Choral Director
Naperville, Illinois

7:30 - 8:00 p.m.

GOSPEL GROUP

The Brothers
Ed Gerald, Director
Washington, D.C.

8:00 - 8:30 p.m.

CONCERT CHOIR

Neshaminy Maple-Point High School
Concert Choir
Harry H. Dengler, Jr., Director
Langhorne, Pennsylvania

8:30 - 9:00 p.m.

CHOIR

Immaculata Preparatory School
Concert Choir
Sister Mary Bates, S.P.
Choral Director
Washington, D.C.

MONDAY, DECEMBER 20

7:00 - 7:30 p.m.

CHOIR

Wheaton High School Choir
and Madrigal Singers
David Hearn, Director
Wheaton, Maryland

7:30 - 8:00 p.m.

CHOIR

Centenary United Methodist Church
Youth Choir
Frances M. McKee, Director
Lynchburg, Virginia

8:00 - 8:30 p.m.

CHORUS

Family of God Singers
Bonnie Michael, Director
Berkeley Springs, West Virginia

8:30 - 9:00 p.m.

CHOIR

Bellaire United Methodist Church
Youth Choir
Earle B. Lowder, Minister of Music
Bellaire, Texas

TUESDAY, DECEMBER 21

7:00 - 7:30 p.m.

CHOIR

The Naturalists Chorale
Department of the Interior
Theodore A. King and Jim Robinson
Co-directors
Washington, D.C.

7:30 - 8:00 p.m.

CHOIR

Messiah United Methodist Church
Sanctuary Choir
Jim Robinson, Director
Springfield, Virginia

8:00 - 8:30 p.m.

CHOIR

Metro Singers
Metropolitan Christian Center
Patricia Posey, Director
Alexandria, Virginia

8:30 - 9:00 p.m.

BRASS ENSEMBLE

The Eastern Brass Quintet
Columbia Artists Management, Inc.
New York, New York

WEDNESDAY, DECEMBER 22

7:00 - 7:30 p.m.

CHOIR

St. Philip's Catholic Church Choir
Richard Thoma, Director
Falls Church, Virginia

7:30 - 8:00 p.m.

BRASS ENSEMBLE

Archbishop Carroll High School
Brass Ensemble
Richard Pasciuto, Director
Washington, D.C.

8:00 - 8:30 p.m.

CHORAL

Capital Choral Ensemble
John Hall, Director
Washington, D.C.

8:30 - 9:00 p.m.

CHOIR

One Way Singers
Reverend Donald E. Neal, Director
Rock Hill, South Carolina

THURSDAY, DECEMBER 23

7:00 - 7:30 p.m.

CHORUS

Prince Georges County Central
Area Children's Chorus
Frances Litzel, Director
Prince Georges County, Md.

7:30 - 8:00 p.m.

GOSPEL GROUP

The Speight Sisters
Ed Gerald, Director
Washington, D.C.

8:00 - 8:30 p.m.

CHORUS

Mark Twain Intermediate School
Glee Club
Kimlyn Vaganos, Director
Fairfax County, Virginia

8:30 - 9:00 p.m.

CHOIR

Prince Georges County Southern
Area Children's Choir
Sally D. Mathews, Director
Prince Georges County, Maryland

Acknowledgements

THE NATIONAL COMMUNITY CHRISTMAS TREE

National Arborist Association
Washington, D.C.

UNITED STATES AIR FORCE BAND

Military District of Washington
Office of the Commanding General

REINDEER

National Zoological Park
Washington, D.C.

Katy Industries

Chicago, Illinois

St. Sophia Greek Orthodox Cathedral Washington, D.C.

District of Columbia Fire Department Washington, D.C.

WRC-TV

Washington, D.C.

Toastmasters International

Washington, D.C.

YOGI BEAR, SCOOPY DOO AND HONG KONG PHOOEY

Kings Dominion Park
Ashland, Virginia

ELLIPSE ROADWAY

United States Marine Corps
4th Combat Engineering Battalion
4th Marine Division

FLORAL DESIGNS

Gude Brothers Co. Florists
Washington, D.C.

National Capital Area Council

Boy Scouts of America
Washington, D.C.

D.C. Chapter, American Red Cross Washington, D.C.

Metropolitan Police, District of Columbia Washington, D.C.

Girl Scout Council of the Nation's Capital Washington, D.C.

*A Special Acknowledgement to the staff of
E-Systems, Incorporated
Dallas, Texas*

*for their outstanding spirit of cooperation
by coordinating the many details relating
to the 1976 Christmas Pageant of Peace*

*A Special Acknowledgement and Thank You
to the*

**General Electric Company
Cleveland, Ohio**

*for their contribution and cooperation in the
design and lighting of the
1976 Christmas Pageant of Peace*

*The appearance of the San Francisco Boys
Chorus is made possible by the generous
contributions of*

**City and County of San Francisco
The Emporium, San Francisco
The San Francisco Annex
Char-Tours**

Mr. Alan Brudos

Mr. Robert Young

Numerous Bay Area Donors

The annual Christmas Pageant of Peace program would not be possible without the cooperation of many — the religious and church groups, students, schools, local, national and international organizations, business, labor and social organizations, the District of Columbia and Federal governments. Added to these is the host of individuals who have given their support, both materially, and in time, talent and thought.

The sponsoring organizations express their appreciation to all these groups and to the individuals who live, and believe in, the Spirit of Christmas.

SPONSORED ANNUALLY

BY

THE CHRISTMAS PAGEANT OF PEACE, INC.

AND

THE NATIONAL PARK SERVICE

DISTRICT OF COLUMBIA DEPARTMENT OF RECREATION

WASHINGTON AREA CONVENTION AND VISITORS BUREAU

Season's Greetings

1976