

The original documents are located in Box 13, folder “3/29/75-4/8/75 - West Coast (2)” of the Sheila Weidenfeld Files at the Gerald R. Ford Presidential Library.

Copyright Notice

The copyright law of the United States (Title 17, United States Code) governs the making of photocopies or other reproductions of copyrighted material. Gerald R. Ford donated to the United States of America his copyrights in all of his unpublished writings in National Archives collections. Works prepared by U.S. Government employees as part of their official duties are in the public domain. The copyrights to materials written by other individuals or organizations are presumed to remain with them. If you think any of the information displayed in the PDF is subject to a valid copyright claim, please contact the Gerald R. Ford Presidential Library.

THE WHITE HOUSE
WASHINGTON

WELCOME TO PALM SPRINGS

STAFF OFFICE

The Staff Office is located in a house at 71280 Mashie Drive, about 3 minutes from the Thunderbird Country Club.

The office is equipped with two IBM typewriters, a XEROX 4500, and a DEX machine. Three White House telephones are installed in the house.

WHCA

The White House Communications Agency is located in the Venture Inn off Highway #111, Rancho Mirage.

PRESS

The International Hotel, 1800 E. Palm Canyon Drive (Highway #111) is the Press Headquarters.

TRANSPORTATION

A limited number of cars are available between the hours of 7 am to 10 pm. Because of the small number of cars available, judicious use is recommended.

Several U Drive It cars are available after 7 pm daily. These cars must be returned prior to 6 am the following morning.

The Dispatch Office is located in the Venture Inn and it can be reached through the White House Switchboard.

RESTAURANTS

There are many fine restaurants in the Palm Springs area. Some of the more popular are:

Don the Beachcomber, The Polynesian Experience --
1101 N. Palm Canyon Drive. 325-2061. Reservation required.
Expensive.

Pal Joey -- The "in" spot for celebrities and movie stars. Expensive. Early afternoon reservations required. 325-7444. After 10:00 pm, the main room turns into a Discoteque.

Mexican Food

Gene Autry Hotel. 4200 E. Palm Canyon 328-1171

Las Casuelas Nueva 70050 Highway #111 328-8844

Sunshine Meat, Fish & Liquor Co. -- Great salad, good food at reasonable prices. Rustic atmosphere. 346-5641. 73986 Highway #111.

Cask & Cleaver -- Featuring Eastern corn-fed Black Angus Beef. Highway #111 and

Desert Air Hotel. -- Old family recipe chicken and dumplings. 42078 Bob Hope Drive. 346-3234.

The Nest -- Italian food with a better than average sauce. Closed Monday. 75188 Highway #111, Indian Wells.

POINTS OF INTEREST

Palm Springs Aerial Tramway -- A 14 minute cable car ride to the top of San Jacinta. 10:00 am to 9:00 pm daily. Last car up the mountain at 7:30 pm. Cost is \$3.75. Location -- Tramway Drive and Chino Canyon off Highway #111 (North). 325-1391.

Desert Museum -- Natural history of the desert, fine arts, primitive art. Hours 10 am to 5 pm. Location; Tahquitz and McCallum Way. 325-2045.

TENNIS

Guest privileges have been arranged at the following clubs:

Thunderbird Country Club - Call Leoncio Collas for reservations at 328-2161. \$5.00 per day.

El Dorado Country Club -- Call Myrna McCormack for reservations at 346-8081, ext. 211 or 215. \$5.00 per hour.

Raquet Club -- 2743 North Indian Avenue, Palm Springs.
Call Mr. Bill Davis or Julie Copeland at 325-1281, for
reservations. The club is extremely crowded and
reservations should be made as far in advance as possible. \$10 per
day.

Tennis Club -- 710 West Baristo Road, Palm Springs.
Call Marge Kolutase at 325-1441 for reservations.

Whites are required. You will be billed.

THUNDERBIRD COUNTRY CLUB

Guest privileges have been arranged for the staff:

BREAKFAST

7:30 am to 11:00 am GRILL ROOM of the Club House.
(Casual Dress)

LUNCHEON

11:30 am to 3:00 pm GRILL ROOM of the Club House
Lunch Buffet (Except Mondays)

11:00 am to 3:00 pm Specials served.

3:00 pm to 6:00 pm Sandwiches, salads, etc.
(Causal dress)

DINNER

6:00 pm to 9:30 pm DINING ROOM OR GRILL ROOM
(reservations preferred) (Coat and Tie required for men;
long dress, cocktail dress or nice
pants suit for women)

Kitchen closes 3:00 pm on Monday

Bar closed 4:00 pm on Monday

ROOM SERVICE

7:30 am to 8:30 pm
(Service ends at 4:00 pm
on Monday)

Note: a 15% tip is added to your bill for food and beverage.

LAUNDRY & VALET

Clothing received by 10:00 am will be returned same day by 5:00 pm. Clothing received before 9:00 am on Friday will be returned Friday at 4:30 pm or Saturday morning before noon.

CHECK CASHING

Arrangements have been made to cash personal checks up to \$100. Ask for Barbara Cook in the Clubhouse Office.

GOLFING

Guest privileges have been arranged at the Thunderbird Country Club. A guest card is attached. A Green Fee of \$30.00 will be billed to your account.

If you desire guest privileges at another Country Club, please contact the Staff Office.

PROPOSED PRESS ARRANGEMENTS

THE PRESIDENT'S

TRIP TO

CALIFORNIA

FRIDAY, MARCH 28, 1975

Baggage may be dropped in Room 87 until
6:00 p. m.

DAY 1

SATURDAY, MARCH 29, 1975

7:00	a. m.	Press with baggage check into Andrews.
7:30	a. m.	Press without baggage check into Andrews
8:00	a. m.	Press Plane departs Andrews
9:00	a. m.	Air Force One departs Andrews
10:30	a. m.	Press Plane arrives Meadows Field, Bakersfield, California.

Press Facilities:

Press Platform
10 long distance telephones

11:15	a. m.	Air Force One arrives Meadows Field, Bakersfield, California.
-------	-------	--

CROWD SITUATION
OPEN COVERAGE

NOTE: Current plans are to raise a crowd at the Bakersfield Airport. This will be the only public appearance of the President in California and, therefore, the entire Press Corps should remain at the airport to cover the event. This will necessitate using choppers to transport the Press Corps to Elk Hills.

11:30 a. m. Army One departs Meadows Airport

Press choppers follow.

11:50 a. m. Army One arrives Elk Hills.

NOTE: The President will tour and be briefed at: a drilling rig, an oil production site, a gas processor site, and a tank farm.

12:45 p. m. Army One departs Elk Hills.

Press choppers follow.

1:05 p. m. Army One arrives Meadow Field

Press remain to file.

1:10 p. m. Air Force One departs enroute Palm Springs

Air Force One pool follows.

1:55 p. m. Air Force One arrives Palm Springs.

CLOSED ARRIVAL
OPEN COVERAGE

2:05 p. m. Motorcade departs.

Air Force One Pool follows.

2:20 p. m. Motorcade arrives residence

Air Force One Pool remains in motorcade.

2:45 p. m. Motorcade departs.

Air Force One pool follows.

3:05 p. m. The President begins his golf game.

PRESS POOL COVERAGE

(1st tee, 9th green, 10th tee, 18th green)

NOTE: Air Force One Pool may file and remain in the clubhouse.
Air Force One Pool will return to the Press Center

6:30 p. m. Afternoon Pool will arrive at the golf course.

7:05 p. m. Motorcade departs

Pool follows.

7:20 p. m. Motorcade arrives residence.

Afternoon Pool returns to the Press Center

LID

It appears that the Press Corps will number between 65-75. Families will be in addition.

Because of the crowd at Bakersfield, I think we want to cover that event which means we will have to chopper to Elk Hills.

Elk Hills has no phones and there is no chance of bringing any in. The Press will, therefore, have to file on return to the Bakersfield airport. We will go with 20 lds and 2 telex.

Choppers (H-53's) will come out of El Toro. Ferry time is one hour each way and 1/2 hour total for the event -- a total of 2 1/2 hours at a cost of \$4,725.00 per chopper. They seat 33.

A decision must be made whether we want to post a sign up sheet to limit the number of Press so we will only use two choppers. Because of the short flight time (20 minutes) it will be difficult to pass more than the two press choppers in flight. There is also a problem on landing more than two choppers. A third press chopper is possible but difficult.

Suggested Press staff on Chopper is 9:

Hushen	USSS
Rosenberger	WH Photographer
Noel	WH Film Camera
Zook	WH Film Sound
WHCA	

There is a remote possibility that Press staff could ride on the regular staff chopper. This should not be considered because last minute changes will bump the Press staff.

There will be a total of 60 chopper seats on the two Press choppers. If the staff takes 9, this leaves 57 seats for the Press.

The USSS will seal off Elk Hills during the visit. Local Press will, therefore, be able to gain access only through special arrangement. Should local press be given 5-6 seats on our chopper or be told to pre-position at Elk Hills, driving time from the Bakersfield airport is one hour.

Elk Hills numbers:	WH Press	65-75
	WH Press Staff	9
	Local Press	6
	 Total Chopper Seats	 66

Questions:

Do we want a third chopper for \$4,725.00? *No*
 Do we limit the Press going to Elk Hills? *yes*
 How important is it for all the Press to be at the Bakersfield airport for *Very*
 the arrival of Air Force One?

The networks will have to provide a chopper to carry film out of Elk Hills. *!*
It will be in the air by 1:00 p.m. PST which will make the evening news. *yes*

What should be done with families on the plane in Bakersfield during the two hour visit?



DAY 2 (EASTER SUNDAY)
SUNDAY, MARCH 30, 1975

9:45 a.m. Morning Pool departs Press Center for residence.

10:45 a.m. Motorcade - GF & BF enroute church. *

*Motorcade
pool to church
& then to
church-*

Pool follows.

10:55 a.m. Motorcade arrives church.

11:00 a.m. Service begins.

11:45 a.m. Service concludes.

11:55 a.m. Motorcade departs.

Pool follows. *

NOTE: Reporters will be given access to the church.
Cameras and sound equipment will remain outside.

12:05 p.m. Motorcade arrives residence.

NOTE: The afternoon pool will arrive at the church.
The morning pool will depart for the Press Center.

12:45 p.m. Motorcade departs.

Afternoon pool follows.

1:15 p.m. Golf begins.

GOLF COVERAGE

6:05 p.m. Motorcade departs.

Pool follows.

6:20 p.m. Motorcade arrives residence.

Afternoon pool returns to Press Center.

LID



DAY 3

MONDAY, MARCH 31, 1975

8:45 a.m. Morning Pool departs Press Center.

9:45 a.m. Motorcade departs.

Morning pool follows.

9:55 a.m. Motorcade arrives.

10:10 a.m. Golf begins.

GOLF COVERAGE

12:00 noon Afternoon golf pool arrives
Morning golf pool departs.

4:35 p.m. Motorcade departs.

Afternoon pool follows.

4:45 p.m. Motorcade arrives

Afternoon pool departs for Press Center.

LID

DAY 4

TUESDAY, APRIL 1, 1975

7:30 a.m. Morning pool departs Press Center.

8:20 a.m. Motorcade departs residence.

Morning pool follows.

8:40 a.m. Motorcade arrives.

9:00 a.m. Golf begins.

GOLF COVERAGE

12:00 noon Afternoon pool arrives
Morning pool departs.

1:50 p.m. Motorcade departs.

Afternoon pool follows.

2:00 p.m. Motorcade arrives residence.

Afternoon pool returns to Press Center.

LID

DAY 5

WEDNESDAY, APRIL 2, 1975

8:40 a.m. Morning pool departs Press Center.

9:40 a.m. Motorcade departs residence.

Morning pool follows.

10:15 a.m. Golf begins.

GOLF COVERAGE

12:00 noon. Afternoon pool arrives.
Morning pool departs.

3:05 p.m. Motorcade departs.

Afternoon pool follows.

3:20 p.m. Motorcade arrives residence.

Afternoon pool returns to Press Center.

LID

NOTE: Mrs. Ford will be in Los Angeles making a public appearance on Wednesday, April 2, 1975

DAY 6

THURSDAY, APRIL 3, 1975

6:15 a.m. Press buses depart Press Center
6:30 a.m. Air Force One Pool departs Press Center enroute residence.
6:50 a.m. Press Plane departs Palm Springs
7:15 am. Motorcade departs

Air Force One Pool follows.

7:20 a.m. Press Plane arrives Lindbergh Field, San Diego.

Press Facilities:

6 long distance telephones

7:35 a.m. Air Force One departs Palm Springs.

8:05 a.m. Air Force One arrives San Diego.

OPEN PRESS COVERAGE
CLOSED ARRIVAL

8:10 a.m. Motorcade departs

Travel Pool and Press follow.

8:25 a.m. Motorcade arrives Westgate Plaza Hotel.

OPEN PRESS COVERAGE

Press proceed to Press Center.

NOTE: Press Center is located in the Copper Room, Room 227 and 228 of the San Diego Convention and Performing Arts Center, adjacent to the Press Conference site and across the street from the Westgate Plaza Hotel.

Press Facilities:

20 long distance telephones
3 telex
1 mult

8:30 a.m. Media breakfast begins.

NO COVERAGE

10:05 a.m. President arrives suite

11:30 a.m. Pool departs Press Center enroute Westgate Plaza Hotel.

11:45 a.m. The President departs Hotel enroute Press Conference.
He will walk across the street and a crowd is expected.

12:01 p.m. Press Conference begins.

12:35 p.m. Press Conference concludes.
The President returns to the Westgate Plaza Hotel.

Pool follows.

12:45 p.m. The President greets Governors.

1:25 p.m. Luncheon is served

PRESS POOL COVERAGE

Pool returns to Press Center.

3:35 p.m. The President arrives suite.

4:00 p.m. Press buses depart Press Center enroute El Cortez Hotel
Convention Center.

4:15 p.m. Pool departs Press Center to board motorcade.

4:35 p.m. Motorcade departs.

Pool follows.

4:40 p.m. Motorcade arrives El Cortez Hotel Convention Center, site of
the White House Conference.

5:00 p.m. Announcement

5:30 p.m. Motorcade departs enroute U. S. Naval Training Center, San Diego.

Pool follows.

Press buses depart enroute Press Center.

5:45 p.m. Motorcade arrives.
President enters Mess Hall and joins enlisted recruits for dinner.

PRESS POOL COVERAGE

7:00 p.m. Motorcade departs enroute Westgate Plaza Hotel.

Pool follows.

7:15 p.m. Motorcade arrives Hotel.

PRESS POOL COVERAGE

The President will greet GOP guests in his suite.

NO COVERAGE

8:10 p.m. Motorcade departs Hotel.

Pool follows.

Press buses follow.

NOTE: There is a possibility the President will drop by a Mexican-American event enroute the airport. If so, the pool should cover it and the buses would not be in the motorcade.

8:25 p.m. Motorcade arrives Lindbergh Field

8:30 p.m. Air Force One departs.

Air Force One Pool follows.

8:35 p.m. Press Plane departs.

9:00 p.m. Air Force One arrives Palm Springs.
Motorcade departs.

Air Force One Pool follows.

9:05 p.m. Press Plane arrives

Press buses depart for Press Center

9:20 p.m. Motorcade arrives residence.

Air Force One Pool departs enroute Press Center.

LID

DAY 7

FRIDAY, APRIL 4, 1975

10:00 a.m. Press buses depart Press Center enroute Palm Springs Airport.

10:20 a.m. Air Force One Pool departs Press Center.

10:55 a.m. Press Plane departs Palm Springs.

11:20 a.m. Motorcade departs.

Air Force One Pool follows.

11:40 a.m. Air Force One departs Palm Springs enroute Hamilton Air Force Base, Marin County, California.

Air Force One Pool follows.

12:00 noon Press Plane arrives.

Press Facilities:

10 long distance telephones

12:45 p.m. Air Force One arrives.

OPEN PRESS COVERAGE

CLOSED ARRIVAL

12:55 p.m. Army One departs enroute the Geysers

Press Pool choppers follow.

NOTE: Press buses proceed to the St. Francis Hotel Press Center in the Elizabethan Rooms A & B.

Press Facilities:

20 long distance telephones

3 telex

1 mult

1:30 p.m. Army One arrives the Geysers.
The President will visit a geothermal drilling site, a geothermal pump station and a geothermal power station. The President will travel from one site to another via motorcade.

2:55 p.m. Army One departs the Geysers.

Press Pool choppers follow.

3:40 p.m. Army One arrives U.S. Naval Station, Treasure Island.

OPEN PRESS COVERAGE
CLOSED ARRIVAL

3:50 p.m. Motorcade departs.

PRESS POOL FOLLOWS.

4:00 p.m. Motorcade arrives St. Francis Hotel.

OPEN PRESS COVERAGE

Press Pool proceeds to Press Center

GOP Guests will meet with the President in his Suite.

6:40 p.m. President departs suite enroute Bay Area Council general reception and the head table reception.

7:40 p.m. Announcement.

9:20 p.m. PRESIDENTIAL REMARKS.

9:55 p.m. Motorcade departs enroute Hamilton Air Force Base.

Press Pool follows.

10:35 p.m. Air Force One departs.

Air Force One Pool follows.

11:00 p.m. Press buses depart St. Francis Hotel.

11:35 p.m. Air Force One arrives Palm Springs.

11:40 p.m. Motorcade departs.

Air Force One Pool follows.

11:45 p.m. Press Plane departs.

11:55 p.m. Motorcade arrives residence.

Air Force One Pool departs enroute Press Center.

12:45 a.m. Press Plane arrives Palm Springs.

Press buses depart enroute Press Center.

LID

THE GEYSERS

The geysers are located in a perfectly lovely mountain-valley setting that is inaccessible by road. The California Highway Department has closed all roads leading to the geysers due to rock and mud slides.

The Press must, therefore, be moved by choppers.

There are no available phone lines, no food, no bathrooms, the weather is cold, the roads are narrow, steep, bumpy and quite primitive. There are no chopper pads -- a low pasture will have to be used and it is small. There is no substance -- just a picture show.

The current schedule calls for an 11:20 a.m. departure from the Palm Springs residence. This will mean the 2:55 (5:55 p.m. EDT) departure of the President will be too late for the event to make the evening news.

To make the evening news, the President would have to leave Palm Springs residence at 8:50 a.m. which would mean a 12:25 (3:25p.m. EDT) departure from the geysers. The President would then have 2 1/2 hours of extra staff time in San Francisco.

Should we try for the evening news or not?

Available choppers: H-53's from El Toro which seat 33 each.

Cost: 3 hour ferry time

1 1/2 hour mission time

7 1/2 hour total hours @ cost of \$14,075 each.

H-H-3's from the USAF which seat 18 are also available. We have one now and with some pressure can probably get a second one.

Cost: 3/4 hour ferry time

1 1/2 hour mission time

3 hour total @ cost of \$2,835 each.

This will have to be a pool movement. One chopper will handle our minimum size pool of 18.

Suggested Staff:

Hushen

Rosenberger

Noel

USSS

WHCA

WH Still

WH Film Camera

WH Film Sound



DAY 8

SATURDAY, APRIL 5, 1975

9:30 a.m. Morning Pool departs Press Center.

10:30 a.m. Motorcade departs residence.

Morning Pool follows.

10:45 a.m. Motorcade arrives La Quinta Country Club.

11:00 a.m. Golf begins.

GOLF COVERAGE

12:00 noon Afternoon pool arrives.
Morning pool departs.

3:50 p.m. Motorcade departs.

Afternoon pool follows.

4:05 p.m. Motorcade arrives.

Afternoon pool returns to Press Center.

LID



DAY 9

SUNDAY, APRIL 6, 1975

7:00 a.m. Morning Pool departs Press Center.

8:00 a.m. Motorcade departs residence

8:30 a.m. Golf begins.

GOLF COVERAGE

11:00 a.m. Afternoon Pool arrives.
Morning Pool departs.

1:20 p.m. Motorcade departs.

Afternoon pool follows.

1:35 p.m. Motorcade arrives residence.

Afternoon pool returns to Press Center.

LID



DAY 10

MONDAY, APRIL 7, 1975

9:20 a.m. Press buses depart Press Center.

9:40 a.m. Air Force One Pool departs Press Center.

10:20 a.m. Press Plane departs Palm Springs.

10:45 a.m. Motorcade (GF & BF) departs.

Air Force One Pool follows.

11:00 a.m. Press Plane arrives McCarron Field, Las Vegas.

Press Facilities:

10 long distance telephones

NOTE: One Press bus proceeds to Las Vegas Hilton.
Press Center located in Conference Rooms 1, 2, 3, 4, 5,
and 6, adjacent to the main ballroom.

Press Facilities:

20 long distance telephones

3 telex

1 mult

11:05 a.m. Air Force One departs.

Air Force One Pool follows.

11:45 a.m. Air Force One arrives Las Vegas.

OPEN PRESS COVERAGE

CLOSED ARRIVAL

11:50 a.m. Motorcade departs.

Air Force One Pool follows.

One Press bus follows.



12:05 p.m. Motorcade arrives Las Vegas Hilton.

OPEN PRESS COVERAGE

The President and Mrs. Ford attend NAB Reception.

12:30 p.m. Announcement

1:35 p.m. PRESIDENTIAL REMARKS.

2:05 p.m. Motorcade departs.

Pool follows.

2:25 p.m. Air Force One departs.

Air Force One Pool follows.

3:00 p.m. Press buses depart Las Vegas Hilton.

3:30 p.m. Press Plane departs.

9:15 p.m. Air Force One arrives Andrews Air Force Base.

10:20 p.m. Press Plane arrives Andrews Air Force Base.



QUESTIONS ON PALM SPRINGS

1. Type of coverage on the golf course.
2. How to handle the locals at the golf course
3. Timing of substance:

Saturday, March 29	Bakersfield & Elk Hills
Sunday, March 30	Easter Church
Monday, March 31	
Tuesday, April 1	
Wednesday, April 2	(Mrs. Ford in L.A.)
Thursday, April 3	San Diego
Friday, April 4	Geysers & San Francisco
Saturday, April 5	
Sunday, April 6	
Monday, April 7	Las Vegas



STAFF ROOM LIST

White House Staff

Thunderbird Country Club

Alan Greenspan #7 South
Dr. Lukash #1 C
Kightlinger/Kennerly #5 West

Venture Inn

Asst. Sec. Bowers #134
Milton Friedman #118
Dan Slane #121
Nell Yates #130
Lee Goodell #108
Kathy Wooten #120

Staff House

Terry O'Donnell
Red Cavaney
Eva Brentley
Jeannie Quinlan

Residences

Mr. and Mrs. Robert Hartmann
40-365 Sand Dune Road

Donald Rumsfeld
Dick Cheney
70-662 Placerville Road

White House Communications Agency

Venture Inn

Gen. Larry Adams #106
LtCol Don Ogden #212

Military Office

Venture Inn

LtCol Blake	#122
Herb Oldenberg	
Norm Stahl	#117
Eddie Serrano	#114
Leroy Borden	#136

Gene Autry Hotel

Bill Gulley	#273
-------------	------

Press Office

International Hotel

Ron Nessen	#331-320
Jack Hushen	#232
Larry Speakes	#309
John Carlson	#308
Shelia Weidenfeld	#311
Bob Mead	#312
Eric Rosenberger	#313
Thym Smith	#310
Connie Gerrard	#319
Patty Presock	#318
Judy O'Neil	#316
Judy Gagliardi	#317
Cathy Koob	#307
Bob Manning	#270
Ray Zook	#271
John Dreylinger	#274

Staff Office

71280 Mashie Drive
Rancho Mirage

Dispatcher

#126 Venture Inn

Military Office

#124 Venture Inn

Command Post

70674 Boothill Road
Thunderbird Estates

Communications Center/WHCA

#204 Venture Inn

THE WHITE HOUSE
WASHINGTON

PRESIDENTIAL SCHEDULE

Sunday, April 6, 1975

Palm Springs, California

9:00 a.m. Depart Presidential Residence enroute
La Quinta Country Club

9:30 a.m. Tee off with Messrs. Blaik, Capra, and Parma

2:30 p.m. Golf game concludes

3:00 p.m. Arrive Residence

PERSONAL TIME

5:30 p.m. Reception for members of the White House
Press Corps

7:00 p.m. Reception concludes

PERSONAL TIME



THE WHITE HOUSE

WASHINGTON

WELCOME SOUTH VIETNAMESE ORPHANS

SAN FRANCISCO INTERNATIONAL AIRPORT

SATURDAY - APRIL 5, 1975

DEPARTURE: 7:30 P.M.

From: Terry O'Donnell ^{TOD}

THE FLIGHT

The Pan American 747 (Call Sign: Clipper 1742) transporting 325 South Vietnamese orphans en route from Saigon via Yokota Air Force Base (refueling stop) to San Francisco International Airport is scheduled to arrive at 9:25 p. m. Information regarding the passengers has been spotty and somewhat vague, but it appears the orphans range in age from 8 months to 8 years and 13 are reported to have chicken pox. Between 11 to 22 adult escorts, primarily American volunteers from Saigon, are on board accompanying the orphans - this extremely low ratio of escorts to children is due to the fact that this is a non-scheduled flight that left on extremely short notice. Two of the escorts, Christine Liverman and Miss Fornfifall are survivors of the C5A crash.

SPONSORING ORGANIZATION

The San Francisco host organization, Society for Protection of Vietnamese Orphans, SPOVO, is a loosely knit volunteer network consisting primarily of members of the medical community, the Army, Red Cross and six national adoptive agencies. SPOVO accepts the orphans at the port of entry, provides medical assistance, and transfers the orphans to adoptive agencies or parents. Some 30 Bay Area hospitals have pledged free medical services for up to 40 orphans each.

SPOVO operates under the general guidelines of Friends For all Children. A letter drafted by NSC thanking them for their efforts is attached at TAB A.

MECHANICS OF THE TRANSFER

The basic element involved in unloading and processing the orphans is the "bus team." Each "bus team" consists of 1 doctor, 1 nurse, 1 registrar and 20 Red Cross volunteers. The "bus team" boards the aircraft; the doctor and nurse quickly check a group of 20 orphans; the registrar documents the group; and the Red Cross volunteers each escort or carry one orphan off the plane to the bus. The bus departs for the Presidio where a thorough medical screening commences.

YOUR PARTICIPATION

You and Mrs. Ford are scheduled to arrive at San Francisco International Airport approximately 15 minutes prior to the orphans' plane. While awaiting the arrival you would mingle informally with some of the volunteers. You would then accompany the first "bus team" on board and assist in the process described above. After the first bus departs the airport, you may depart or stay as long as you wish. In all, there will be 18 buses.

There will be no formal speaking opportunity; however, talking points prepared by NSC are attached at TAB B, should you wish to speak informally to the press or some of the volunteers.

REQUESTS BY THE HOST ORGANIZATION

There are two items that we expect will come up in your conversations with the volunteer leaders. They will ask you to:

- (1) Request that FAA establish a special "inbound desk" to assist in the coordination and distribution of information on the orphans flights. (There has been much confusion and misinformation todate.)
- (2) Look into the rerouting of all inbound military aircraft transporting orphans from Travis to San Francisco International and Oakland Airports. These airports are closer to the hospitals and to the source of volunteers.

SEQUENCE

7:30 p. m. You and Mrs. Ford board motorcade and depart Residence en route Palm Springs Municipal Airport.

(Driving Time: 20 minutes)

7:50 p. m. Arrive Palm Springs Municipal Airport. Board Air Force One.

7:55 p. m. Depart Palm Springs Municipal Airport en route San Francisco International Airport.

(Flying Time: 1 hour, 10 minutes)
(No Time Change)

9:05 p. m. Arrive San Francisco International Airport.

OPEN PRESS COVERAGE
CLOSED ARRIVAL

You and Mrs. Ford will be met by:

Dr. Alex Stalcup, SPOVO Pediatrics Manager
and Director

Dr. Mark Oscherwitz, SPOVO Internal Medicine
Manager and Director

NOTE: Dr. Stalcup will provide you and Mrs. Ford with a Red Cross Badge and a SPOVO Badge, which you should wear to identify you as volunteers.

9:10 p. m. You and Mrs. Ford board bus in the caravan and await the arrival of the Pan Am "Clipper 1742".

NOTE: While on board, a briefing on the evacuation procedures will be provided.

2.

9:25 p. m.

Pan Am "Clipper 1742" arrives San Francisco International Airport. Medical inspection team proceeds on board.

NOTE: You and Mrs. Ford will be escorted to a special viewing area.

9:30 p. m.

You and other members of Bus Team # 1 proceed on board "Clipper 1742" and carry the orphans from the plane to their awaiting bus # 1.

PRESS POOL COVERAGE

NOTE: You may continue assisting local bus teams as they arrive at plane side. In all, 18 buses will be utilized; however, you may depart at any time.

10:30 p. m.

You and Mrs. Ford thank your hosts and board Air Force One.

10:35 p. m.

Air Force One departs San Francisco International Airport en route Palm Springs Municipal Airport.

(Flying Time: 1 hour, 5 minutes)

11:40 p. m.

Air Force One arrives Palm Springs Municipal Airport.

OPEN PRESS COVERAGE CLOSED ARRIVAL

11:45 p. m.

You and Mrs. Ford board motorcade and depart Palm Springs Municipal Airport en route Residence.

12:00 midnight

Arrive Residence.

#####

Mrs. Wende Grant
Executive Director
Friends For All Children
445 South 68th Street
Boulder, Colorado 80303

Dear Mrs. Grant:

Mrs. Ford and I want to thank you personally for the splendid effort you and your staff, both in Vietnam and in the United States, have made to process and find homes for so many homeless, helpless orphans during this trying emergency.

On behalf of millions of people throughout the United States who are moved by compassion for the future of these little ones, I also want to express appreciation and encouragement for your interest and concern in caring for those less fortunate than ourselves.

Your work is in the finest tradition of the American spirit of compassion and freedom. You should be proud of what you have accomplished under such difficult circumstances.

Sincerely,

Gerald Ford

Suggested Remarks for the President upon the
Arrival of Vietnamese Children for Adoption
in the United States by Friends For All Children

9:30 p. m.
Saturday, April 5, 1975
San Francisco International Airport

Mrs. Ford and I take great pleasure in welcoming all 325 children who arrived on this flight to become members of American families. We also congratulate Mrs. Wende Grant and the staff of Friends For All Children who accompanied the children on the flight as well as all the others who assisted with this very worthwhile endeavor.

I cannot let this moment pass without expressing once more our deep sadness at the tragic loss of so many of the children destined for the U. S. on your earlier flight, as well as the adult victims who were escorting them.

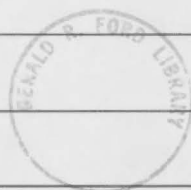
The arrival of these children today is in the great American tradition of welcoming the homeless. I want on this occasion to convey my heart-felt thanks and good wishes to the other agencies bringing these children to their new American homes. These include Catholic Relief Services, Friends of Children of Vietnam, Holt International Children's Programs, Pearl Buck Foundation, Travelers Aid-International Social Service of America and World Vision Relief Organization.

This happy occasion is the culmination of the outstanding performance of the personnel of all of these agencies working under extremely difficult conditions especially over recent months in South Vietnam.

Ford Dinner - April 1

Mr. & Mrs. Leon Patrone-Pasme
Mr. & Mrs. Frank Capriz
Mr. & Mrs. Bos Hope-Delors
" " " Fred Wilson
" " " Frank ~~Tanner~~ ^{Johnson} (Eva) (Gail)
Mrs. " " Walter Annenberg
Mr. & Mrs. Howard ^{Stogdell} Adams
" " " Jack Westlund (Possibly Ben)
" " " Keating
Mrs. Merwin Cornelius Steketee
Cold friend of Mrs. Ford's. (G.R. Mich)
Alvin Greenspan - Economic Adviser
Mr. & Mrs. Red Blaik
Mr. & Mrs. Wayne ^{& Lynn} Hoffman
Mr. & Mrs. Rawlings -
friend of Patrone family & Godfather
to all Patrone children


Low key



THE WHITE HOUSE

WASHINGTON

April 6, 1975

MEMORANDUM FOR: SHEILA WEIDENFELD
FROM: RED CAVANEY 
SUBJECT: THE PRESIDENT'S VISIT TO
LAS VEGAS, NEVADA AND
RETURN TO WASHINGTON, D. C.
Monday, April 7, 1975

You are manifested on Air Force One and are requested to proceed to the Presidential Thunderbird Estates Residence, via your own transportation, no later than 10:30 am. The motorcade will depart at 10:40 am en route Palm Springs Municipal Airport. Air Force One will depart at 11:05 am stopping in Las Vegas, Nevada for the President's attendance at the Annual NAB Luncheon. The estimated time of arrival in Las Vegas is 11:45 am. Air Force One will depart Las Vegas at 2:35 pm en route Andrews AFB with an estimated time of arrival of 9:25 pm. Luncheon will be served en route Las Vegas and dinner will be served en route Andrews AFB.

BAGGAGE CALL & ATTIRE: All baggage should be left unlocked outside your residence quarters no later than 8:00 am. Carry-on baggage should be taken with you to Air Force One. All carry-on baggage is subject to inspection by the Secret Service.

Attire for the NAB Luncheon is Business Suit.

WEATHER REPORT: LAS VEGAS: Mostly cloudy, high in low 50s with winds of 15-25 knots; 15% chance of precipitation.

WASHINGTON: Temperatures in the mid-40s, clear and breezy, 0% chance of precipitation.

WITHDRAWAL SHEET (PRESIDENTIAL LIBRARIES)

FORM OF DOCUMENT	CORRESPONDENTS OR TITLE	DATE	RESTRICTION
Doc.	Motorcade assignment <i>6 pages</i>	3/29/75-4/8/75	B

File Location:

Shelia Weidenfeld Files, Box 13, Daily Events File. Folder: 3/29/75-4/8/75 - West Coast (2)

RESTRICTION CODES

jjo 10/31/16

- (A) Closed by applicable Executive order governing access to national security information.
- (B) Closed by statute or by the agency which originated the document.
- (C) Closed in accordance with restrictions contained in the donor's deed of gift.



April 9, 1975

ROBERT C. MACAULEY
President

Honorable Gerald R. Ford
The White House
Washington, D. C.

My dear Mr. President:

During our chat in the bus at the airport in San Francisco on Saturday evening, I observed to Mrs. Ford that it must be discouraging, to say the least, to reflect upon awakening in the morning, that everything you might do during that day (or any day) would inevitably be misinterpreted or misconstrued in and by the press. The last three days have, unfortunately, corroborated that observation.

I returned to New Canaan from San Francisco on the morning following our meeting there. Since then there have been approximately a dozen taped interviews concerning my personal role in bringing the Vietnamese orphans to San Francisco. In each and every one of these taped interviews, I made a very forceful statement concerning your presence at the scene, to the effect that I was and am still convinced beyond the shadow of a doubt that the presence of you and Mrs. Ford in San Francisco to greet the orphans was in no way politically motivated, that it was simply an act of deep humanitarian concern on both of your parts. It is interesting (and appalling) to note that in each and every one of these interviews, the portion relating to my statement about your presence was edited out. And then yesterday, the NEW YORK TIMES formally editorialized on the "exaggerated importance assigned by President Ford to the orphans' airlift". All this under the aegis and heading of "All the News That's Fit to Print".

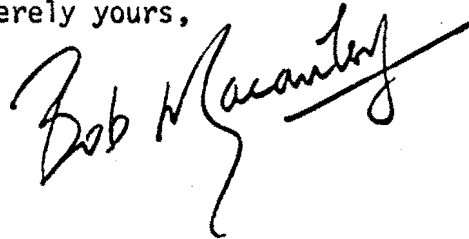
During our discussion regarding Vietnam, you observed that it might take historians one hundred years to interpret events and determine just who was right. I would only observe on that score that the advocates of abject surrender with their fanatical obeisance to prophecies of gloom and doom will ulti-

Honorable Gerald R. Ford
April 9, 1975
Page Two

mately be judged in the proper perspective of history. Most important of all to me is the fact that yours will be a legacy of honor.

Our faith is in you and our prayers are with you.

Sincerely yours,



RCM:cwb

P.S. Mrs. Ford and Sheila seemed interested in the quotation from Albert Schweitzer to which I alluded during my conversation. For their ready reference, since it seems so pertinent today, I quote it here in full:

"Just do what you can. It's not enough merely to exist. It's not enough to say, 'I'm earning enough to live and to support my family. I do my work well. I'm a good father. I'm a good husband.' That's all very well. But you must do something more. Seek always to do some good, somewhere. Every man has to seek in his own way to make his own self more noble and to realize his own true worth. You must give some time to your fellow man. Even if it's a little thing, do something for those who have need of help, something for which you get no pay but the privilege of doing it. For remember, you don't live in a world all your own. Your brothers are here, too."

CC: Mrs. Gerald R. Ford
Mrs. Sheila Weisenfeld ✓



VIRGINIA FIBRE CORPORATION • 51 LOCUST AVENUE
NEW CANAAN, CONNECTICUT • 06840



Air Mail

Mrs. Sheila Weisenfeld
Press Secretary to Mrs. Ford
The White House
Washington, D. C. 20500



Air Mail

THE WHITE HOUSE

Washington

The President and Mrs. Ford

wish to invite you

to an informal patio reception

at their residence

**41001 Thunderbird Road
Thunderbird Ranch Estates
Rancho Mirage**

Sunday, April 6, 1975

5:30 to 7:00 pm

Mr and Mrs. Ed Weidenfeld

Room 311

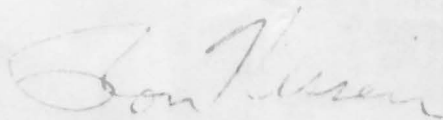
[Faint, illegible text, possibly a list or notes]

THE WHITE HOUSE
WASHINGTON

April 6, 1975

MRS. FORD:

I thought you might like to have a
copy of the attached list of invitees
to the press reception this evening.



Ron Nessen



INVITEES TO THE PRESS RECEPTION TO BE GIVEN

BY THE PRESIDENT AND MRS. FORD

Sunday, April 6

Richard Growald	United Press International
Frank Cormier	Associated Press
Howard Benedict (Mrs. Joy)	Associated Press
Ralph Harris (Mrs. Ena)	Reuters
Louis Foy	Agence France Presse
Lou Cannon	Washington Post
Jack Germond	Washington Star-News
John Herbers (Mrs. Betty)	New York Times
Paul Healy	New York Daily News
Arlen Large	Wall Street Journal
Martin Schram	Newsday
Bruce Winters	Baltimore Sun
Aldo Beckman	Chicago Tribune
Peter Lisagor	Chicago Daily News
James Deakin	St. Louis Post-Dispatch
Rudy Abramson (Mrs. Joyce)	Los Angeles Times
Al Sullivan	USIA
Saul Kohler	Newhouse
William Theis	Hearst
Roy MacCartney (Mrs. Betty)	The Melbourne (Australia) Age
Richard Beeston	London Daily Telegraph
Thomas DeFrank (Mrs. Mary Jane)	Newsweek
John Mashek (Mrs. Sarah)	U. S. News & World Report
Dean Fischer	Time
John Osborne (Mrs. Trudy)	New Republic
John Weisman	TV Guide
John Buckley	Western Union
Thomas Capra	ABC Productions
Tom Jarriel	ABC
Ann Compton	ABC
Walt Rodgers	AP Radio
Lucien Millet	Radio Canada
Charles Thompson	CBS Productions
Bob Schieffer	CBS
Phil Jones	CBS

Jeff Skov (Mrs. Paula)	Golden West Broadcasters
Forrest Boyd	Mutual
Lloyd Siegel (Mrs. Joan)	NBC Productions
John Cochran	NBC
Russ Ward	NBC Radio
Hatsuhisa Takashima	NHK Broadcasting
Don Fulsom	UPI Audio
Philomena Jurey	Voice of America
Thomas Girard	Westinghouse Broadcasting
Charles Tasnadi	AP Photos
Ron Bennett	UPI Photos
Dennis Brack	Time - Black Star Photos
Wally McNamee (Mrs. Nikka)	Newsweek Photos
Gordon Hoover (Mrs. Susan)	ABC-TV cameraman
Lew Maddox	ABC-TV soundman
Mike Belli	ABC Radio Engineer
Cal Marlin	CBS-TV cameraman
Tom Novak	CBS-TV soundman
Dave Peredia	CBS-TV electrician
Gerald Conklin	CBS Radio Engineer
Frank Gibson	NBC-TV cameraman
Al Hoagland	NBC-TV soundman
Ernest Hauser (Mrs. Mary Jane)	NBC-TV electrician
Aldo Argentieri (Mrs. Helen)	NBC Radio Engineer
Cleveland Ryan	Lighting Technician
Meg Greenfield	Washington Post Editorial Page
Lloyd Shearer	Parade Magazine
Ted Koppel	ABC-State Department Correspondent

WHITE HOUSE STAFF

INVITED TO THE PRESS RECEPTION -(APRIL 6)

Mr. and Mrs. Ron Nessen
Sheila Weidenfeld (Mr. Ed)
Larry Speakes
John Carlson
Thym Smith
Les Janka

Mr. and Mrs. Don Rumsfeld
Mr. and Mrs. Bob Hartmann
Mr. Alan Greenspan
Mr. Milt Friedman
Mr. Bob Orbin
Kay Pullen

June 16, 1975

Dear Miss Chaplin:

Many thanks for your letter of June 3 and for sending me a reprint of the Architectural Digest. I thoroughly enjoyed reading it and know that Mrs. Ford will.

Mrs. Ford loved her stay at the Beverly Wilshire and was impressed with all the staff. She is still talking about her beautiful suite.

Thank you so much for your warm hospitality and for helping make our Los Angeles trip a memorable one.

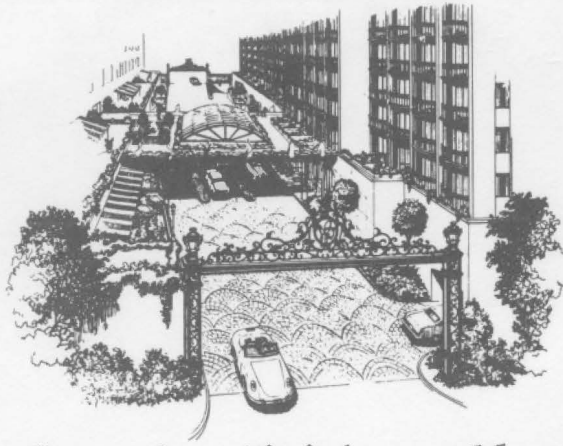
Sincerely,

Sheila Rabb Weidenfeld
Press Secretary to Mrs. Ford

Miss Helen V. Chaplin
Executive Assistant Manager
Beverly Wilshire Hotel
9500 Wilshire Boulevard
Beverly Hills, California 90212



Telephone
(213) 275-4282



Beverly Wilshire Hotel

9500 Wilshire Boulevard, Beverly Hills, California 90212

June 3, 1975

Mrs. Sheila R. Weidenfeld
Press Secretary to Mrs. Gerald Ford
THE WHITE HOUSE
Washington, D. C.

Dear Mrs. Weidenfeld:

From all the reports I've read and heard Mrs. Ford and you are really enjoying your trip to Europe.

Am enclosing Architectural Digest reprint which shows the Bufalini Suite occupied by Mrs. Ford as well as a second floor room such as you occupied.

Not only was it an honor to have Mrs. Ford with us, but it was a true pleasure as well. We all hope that before too long she will pay us a return visit.

With kindest regards from all of us at the Beverly Wilshire.

Sincerely,

A handwritten signature in cursive script that reads "Helen V. Chaplin".

Helen V. Chaplin
Executive Assistant Manager

hvc/ss
encl.

P.S. Don't forget - you are coming for
a week of rest !!



ARCHITECTURAL DIGEST



PHOTOGRAPHS COURTESY OF
ARCHITECTURAL DIGEST

REPRINTED FROM
JULY / AUGUST, 1972



AN IMPOSSIBLE DREAM COMES TRUE

The Beverly Wilshire

Photographed by Alexandre Georges
By Robert Hardy Andrews

Ten years ago, two dreamers told their friends they were setting out to build a fascinating place for travelers who are not at ease in identical cells, into and out of which they are pushed with neither welcome nor "Please come again." Who want to be treated as guests, not room numbers on computer cards. In short, who are weary of jet-age make-do, and would, if they could, break their journeys where elegance, ambience and special thoughtfulness will soothe the body and refresh the mind.

Their friends said it couldn't be done, but like the "Man of La Mancha," they clung to their impossible dream. And after a decade of disappointments, delays and innumerable obstacles, the dream has come true. It stands for all to see, in the heart of Los Angeles, California; the new Beverly Wing of the Beverly Wilshire—first in America on which Hotel Representative Inc. has conferred the *Grand Luxe* hallmark, until now granted only to Europe's finest palace-inns, not only for its beauty and comfort, but also for the excellence of its cuisine and personalized service. And how this came to pass is a story that would call for telling even if the teller did not belong to the always growing legion of friends and admirers of Hernando and Marcelle Courtright.

Proof that dreamers can also be builders begins when your car turns in through impressive Louis XV bronze and iron gates that are never closed, onto the only private street in Beverly Hills: "El Camino Real," the Royal Road. Above its hand-cut, hand-set granite pavement rise eight floors of guest rooms, townhouses petite suites, plus four stories of penthouse apartments. On either side are gaslights from Edinburgh Castle.

Gigantic mission arches of Carrara marble, carved in Italy. A soaring glass-domed *porte-cochère* has the strength-with-grace of a Roman bridge in Spain. A marble mural inlaid in multicolored mosaics, work of a Courtright family friend, the internationally noted artist Millard Sheets, brings early California to life along the wall of the Wilshire Wing on your right. A noble caballero and his lady seem to say "*Mi casa es su casa,*" my home is your home.

And so says Hernando Courtright, who began as a bright young banker, stepped in to salvage a mortgaged and moribund hotel in 1942, sold it in 1958 and became first president of Century City, but returned to his first love when he purchased the Beverly Wilshire in the early 1960s. He greets you in the Beverly Wing's Grand Hall, a spectacle setting of varicolored marble, monumental mirrors and gilded chandeliers, with a curving red-carpeted marble staircase rising to a gallery with hand-wrought bronze and iron railings. For all the splendor, there is warmth, in the most remarkable hotel these much-used eyes have ever seen.

Famed architect Charles Luckman said, "No one builds palaces like this any more, much less hotels; I deeply admire the courage it took to attain such extraordinary results." Carleton Alsop, the wit and bon vivant, said once at a gathering of the Chevaliers du Tastevin: "Hernando reminds me of a man who walks like a hotel, and a hotel who walks like a man." His personality is present wherever you turn, and there is a second palpable presence, sharing Hernando's dream: Marcelle Courtright of Mexican-Spanish-French ancestry, with the taste, resilience and imagination of her forebears. Notably,

continued

EL CAMINO REAL (Cover Page)

A view of the Beverly Wing, from El Camino Real, a unique private street. This wing, with its facade of giant Mission arches of white Carrara marble, is joined to the Wilshire Wing by a domed *porte-cochère*. At night thirty-eight gaslight lanterns from Edinburgh castle illuminate street of handset porphyry granite pavers. The massive wrought-iron and bronze gates were conceived from a design by Pierre Scapula, specified in France and custom made in Mexico by native artists.



she not only created the captivating décor, but took a strong active part in the architectural design and construction as well as in most phases of this extraordinary project. Neither guessed how much this would demand of both time, creative ingenuity and faith.

The Beverly Wilshire has been a landmark since 1928, facing Wilshire Boulevard, within walking distance of all major shops, boutiques, doctors' offices and restaurants; it is surrounded by a garden community of homes owned by film stars, business executives and social leaders. But when Hernando Courtright became the owner, the Beverly Wilshire was an island, no longer an accessible oasis. Wilshire Boulevard traffic was a constantly rising flood past the Beverly Wilshire's doors. Parking was an insoluble problem. "My husband," Marcelle says, "knew exactly how the Beverly Wilshire could be saved."

Solution: turn the hotel around, with entrance from an uncrowded private street. This called for zoning changes. For seven years, Hernando jostled with city planners, bankers, construction specialists. Meanwhile, unable to find a designer who could carry out the versatile and complex master plan, he turned to Marcelle: "We're pressed for time, I rely on you to insure the harmony of design, outstanding elegance, and above all, the comfort the Beverly Wing must have."

"Knowing his Irish-Basque determination, I reluctantly agreed to comply with his wishes, fully realizing the monumental task ahead of me. It became clear that I had to create unity without uniformity and diversity without division."

The chosen architect, Welton Becket, a close Courtright friend, died before ground could be broken. An architect, the dictionary says, is "one whose profession is to design buildings and supervise their construction." But there is a second definition: "also, the deviser, constructor, maker or creator of anything."

Now there were two devisors and creators. "Hernando," Marcelle recalls, "envisioned the mission arches, the concept of a canopy tying the Wilshire and Beverly Wings together, and the "sidewalk café." He evolved the gallery plan that gives practical versatility to all the banquet rooms. He planned

the Grand Ballroom and Winter Garden arrangement. He thought of including a quaint pub, and two-story townhouses with interior staircases, which I distinctly remember we were told could not be done in the space we had; therefore the two of us had an find the answer to the enigma."

They reminded each other of the curved balconies seen in Paris. Hernando decided the new wing must have bay windows, glassed from floor to ceiling, framed by wrought-iron balcony railings. Marcelle conceived and carried out a plan to follow *California history* by designing in authentic styles, the first floor and guest rooms in *Spanish décor*, the next in *Mexican*, the third in *California Today*, the fourth *Italian*, the fifth *French*, and the sixth *Avant Garde Modern*, "but not in a fashion that may soon pass." The Wilshire Wing was not neglected: Los Angeles has honored Hernando by naming him *El Padrino*, the city's Godfather; Marcelle designed an "El Padrino" bar-rotisserie, Western in theme, and meanwhile traveled overseas collecting custom-made replicas of Old World museum treasures. Complementary items sometimes made to her designs by Old World artisans, such as luggage racks and television stands, were added to the Beverly Wing across the Royal Road.

Decided: from the most elaborate townhouse suites to the smallest single rooms (and none are small), all must have full marble bathrooms with custom-made fittings, the same fine furniture, carpets, fabrics, wallcoverings, beds, lamps, even embroidered monogrammed Royal Velvet towels from Fieldcrest. Concurrently, never compromising, everything must be *authentic, practical, durable*, and most important, *comfortable*. There was also the budget, which could not be exceeded. Solution: Go to the top. Owners and presidents of mills, manufacturers, artists, were sources from which Marcelle made purchases on an unusually preferential basis. A stranger does not tell Pierre Scapula in Paris, "I would like you to design our new ballroom." Scapula does palace residences, converts noble old chateaux into exclusive inns for the select, and refuses more commissions than he accepts. Marcelle went to him as a friend,

and won a convert to her conviction that only the very best would do for the Beverly Wing.

Pierre introduced her to Monique Silverman, president of the famous French fabric firm of Boussac. There, after first looking at hundreds of different materials, she chose fabrics in special designs for the Mexican, French and California floors. In one grand sweep, certain fabrics would cover walls, draperies, lampshades and beds in all rooms on several floors. Even though it is often heard that "nobody does that in a hotel," thousands of yards of most exclusive 18th-century paisleys, floral chintzes, brocatelles and liserés protected by Zepel were selected for the Italian, French and Champagne floors, covering walls up to 24 feet high. Her creative drive won converts everywhere.

Discovering that a childhood acquaintance, Pablo Portilla, owned Fundiciones Artísticas in Mexico City, Marcelle went to him with Pierre Scapula's drawings for the Louis XV gates and interior railings for the Beverly Wing. Initial construction plans had called for travertine on façade arches and interior columns, factory-made tiles in all bathrooms. Not good enough for Marcelle, she turned to another good family friend, Maurizio Buffalini of Italy, world-known as "Mr. Marble."

Hand-carved selected slabs from his Carrara quarries cover all mission arches facing El Camino Real. Enormous columns, elevator arches and stringers of Tinos vert marble, white Carrara inlaid marble floors, and marble in different colors for bathrooms throughout the Beverly Wing, were selected in Italy. Meanwhile, Italian stonecutters were imported, there being none in the United States who had ever done the work, to cut and shape blocks of porphyry granite, paving the private street with which the dream began. Los Angeles County was explored by Marcelle until she found six perfect old pear trees, and selected all flowering plants, to landscape a setting romantically lit at night not only by 38 gas lamps from Edinburgh Castle but also by 15,000 mini-bulbs.

Another family friend, John P. Maguire, arranged for Marcelle to present her case directly to Walter Guinan, president of Karastan. Only Karastan, she said, could pro-

duce the 3,000 yards of custom carpeting, made from pure virgin wool, in a design inspired by an antique Savonnerie carpet in the Courtrights' home, which was what she must have for the most beautiful ballroom known today. She offered a challenge, and a showplace. Karastan accepted both. Carpeting in sixteen colors and eighteen different floral patterns took almost a year to complete. Walter Guinan calls it "the most magnificent carpet we ever made."

From this beginning, Karastan went on to supply the Beverly Wing's entire floorcovering installation, delivering thousands of yards of high-pile "Coquille" made from the miracle fiber of Antron. "This noble and practical carpet is one of my greatest discoveries."

Lanterns and appliques for Beverly Wing corridors according to the different floor styles, were custom made like everything else, following Marcelle's specifications and designs. In Olinala, a Mexican village reachable only by helicopter, she found artisans who, for generations, had made small boxes and simple trays, but succeeded in inducing them to make tables in different patterns, hand carved and lacquered in brilliant colors. So doing, she launched a new industry. President Echeverría of Mexico, hearing of this, offered a gold medal to the outstanding craftsman.

Another "first," Fieldcrest, famous creators of luxurious towels, expertly produced embroidered, monogrammed, extra-large towels

of Royal Velvet. Until then, Fieldcrest had left that personalized touch to outside companies. On completion of the Beverly Wilshire order, Fieldcrest opened its own monogramming department! Their luscious-looking wonder blankets with the velvety touch never cease to receive praise from discerning guests.

Because of Hernando's belief that the resting period of a guest must be of extreme comfort, "Beauty Rest," by Simmons, has always been the answer. All beds were custom-made, extra-long, over-wide and fireproofed. For double occupancy, a couple can choose between a semi-large bedroom with either twin or king-size beds with one and a half baths, or a much more spacious bedroom

continued



GRAND HALL

Regal marble pilasters in Rouge-Incarnat and Tinos Vert marble create Versailles effect. Karastan carpet with sixteen different floral motifs in sixteen different colors is designed from a classic Savonnerie, a cherished heirloom of the Hernando Courtrights.

GRAND HALL

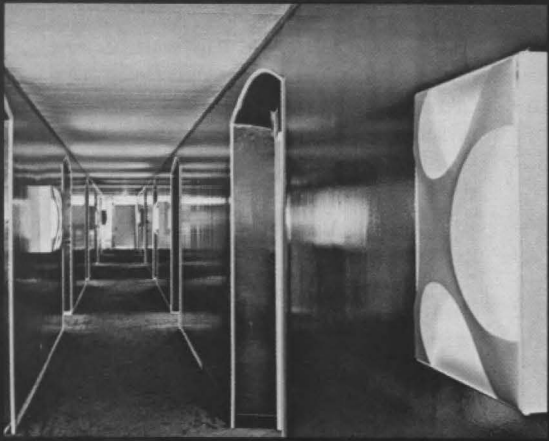
Previous page, view of Grand Hall and Staircase shows lavish use of Carrara marble that adds luxury to the Beverly Wing. Wrought



BALLROOM LOGGIA

Eight-foot palms adorn antique-mirrored arches of the Loggia of the Grand Ballroom. Louis XVI bronze doré and cut crystal lanterns extend French theme. Entrance to the Loggia is through Mission arches draped with yellow silk by Stroheim and Romann.

iron railing designed by Pierre Scapula and made in Mexico can be seen to best effect at upper left. Persian red carpet is by Karastan.



AVANT-GARDE

Futuristic effect of Hallway is created by dramatic contrast of gleaming copper Mylar walls and espresso brown carpet by Karastan with stark white of doors. Appliques are sculptures in metal.



"CARINA"

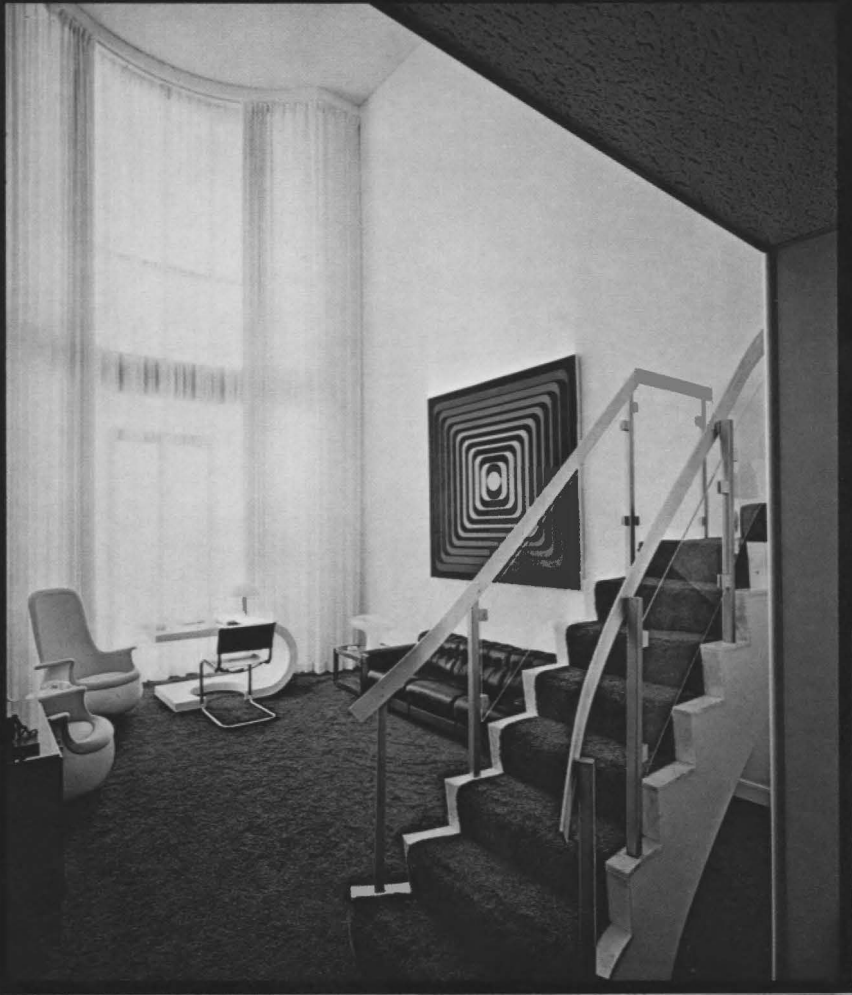
One hundred and twenty yards of richly colored Paisley print from Clarence House upholstery walls in the Carina Suite. Mrs. Courtright selected this exotic 18th century pattern for the suite dedicated to her daughter. Karastan carpet of Antron was made in custom colors throughout. In one grand sweep fabric was used for walls, draperies and lampshades to create a harmonious effect permitting also to camouflage functional architecture. The second floor has a separate entrance on the upper level to ensure convenience and privacy. Upstairs bedroom in authentic Louis V decor is complemented by an exquisite fabric from Boussac. As in all bedrooms, three sets of curtains adjust intensity of daylight.



MEXICAN HALLWAY

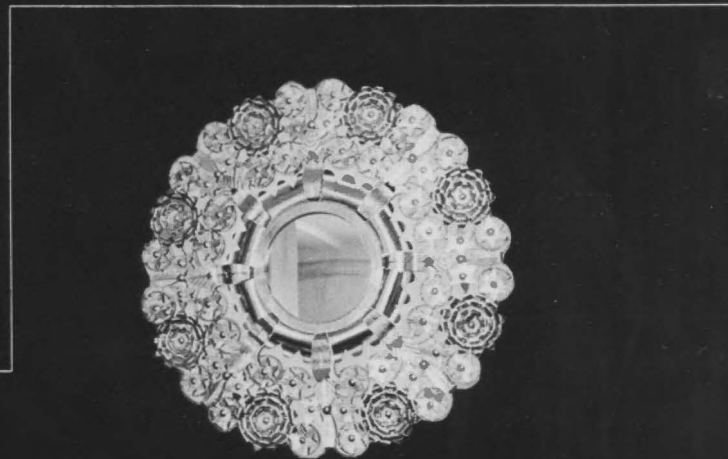
Flowers, birds and folkloric motifs of Mexico are subject of multifaceted decorative mural on hand-finished adobe walls.





"JEAN PIERRE VASARELY" (YVARAL)

The original graphics of Jean Pierre Vasarely (Yvaral) are the focal point of this exciting Avant-Garde Townhouse Suite. Michele Vasarely was the invaluable liaison who masterminded all the color schemes which in turn were custom made by Karastan. Kidglove leather sofas from Moreddi complement the special white vinyl wall covering from Lee & Jofa matching draperies and furniture. Unusual and comfortable tub chairs were executed by Knoll-France. Custom made steel railing was designed by Carina, Mrs. Courtright's daughter. White marble stringers came from famous Carrara quarries of Maurizio Bufalini.



"DOLORES DEL RIO"

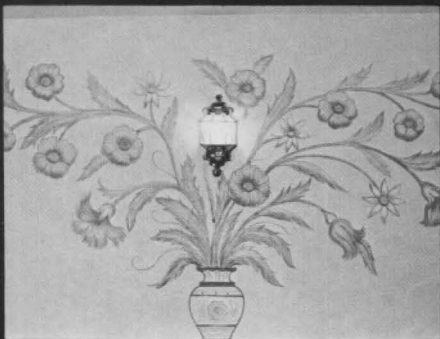
Royalties were paid to the New York Metropolitan Museum for every yard of fabric used in the Living Room of this Mexican-style Suite. The flame stitch pattern was duplicated in a heavy woven fabric by Brunswig & Fils. Furniture and artifacts are all made in Mexico by native artisans. Desk lamp is one of thirty reproductions of a Pre-Columbian piece. Wall hangings are the work of Huichole Indians. Boussac fabric in upstairs Bedroom conveys primitive Aztec heritage of Mexico. Fabric finish is Zepel by Du Pont. Carpets are by Karastan.





"MADRID"

Leather dominates spacious Spanish-style Madrid Suite. Sofa is suede covered and easy chairs are in maroon hide. Leather headboard is painted in three layers of gold and hand decorated in sixteenth-century design. Material for draperies and bedspread is handloomed with velvet hand-appliqued stripes edged with cording. Fabric finish is Zepel by Du Pont. Carpet is Karastan.



The custom designed lantern adds to Old World ambience.

"MAURIZIO BUFALINI"

On the opposite page is shown the Townhouse Suite named for the Italian marble executive. All furnishings are in the Venetian mode. The Roman stripe fabric in the Bedroom by Stroheim and Romann is used for wallcovering and decorative applique on bedspread. All fabric is treated with protective coating of Zepel by Du Pont. Carpets are by Karastan. The suite has bay windows and a terrace overlooking the Don Quixote patio and pool and the residential section of Beverly Hills, Western Los Angeles, and environs.



"JIMMY STEWART"

This Townhouse Suite reflects an interpretation of California design—a garden theme with modern and Oriental accents. Handsome furniture is casual and contemporary. Lacquer desk chair is inspired by Chinese Chippendale. The fabric from a design in the New York Metropolitan Museum was executed by Brunschwig & Fils and finished with Zepel by Du Pont. Cafe Espresso Karastan carpet creates "masculine" atmosphere.



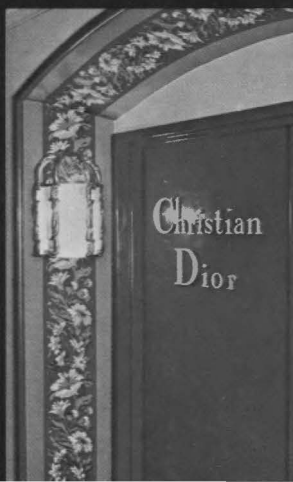
"HERNANDO COURTRIGHT"

Handcarved furniture and hand-embroidered chair upholstery are highlights of the Spanish-style rooms and suites. At the desk is a Frailero, or monk's chair, a faithfully reproduced museum piece from the era of Philip II. The seats are covered in fabric hand appliqued with small pieces of multicolored suede. One yard of this fabric took four months to make. Ship is exact replica of vessel which brought Conquistador Hernando Cortés to the New World. Carpets are by Karastan. Fabric finish is Du Pont's Zepel.



"CHRISTIAN DIOR"

Savonnerie-inspired floral motif in bas relief on vinyl outlines doorway of Christian Dior Suite. Memorabilia of the famous couturier adorn entrance foyer (not seen). A paisley pattern from Clarence House was selected for this important suite. All fabric is Du Pont Zepel finished. The Antron are by Karastan.







with sofa-sitting arrangement plus two separate baths, or a suite with two baths. No such amenities have ever been offered elsewhere.

Nothing whatever was ordered from catalogues. Marcelle selected all custom-made pieces and when not available, they were designed by her, down to uniforms and matches. Reversing jet-age practice, attractive young ladies were trained to operate elevators which are very much like jewel boxes. Extras were added that a guest might never miss had they been

continued

"PRINCIPES DE BORBON"

The Prince and Princess of Borbón were the first couple to stay in the Honeymoon Suite, opposite page, which was inspired by the Hindu god of love and his earthy mate, who symbolize eternal devotion. Two themes, "The Exotic East" and "Matrimonial Joy," are carried throughout by accessories and fabrics. A striking paisley print from Bousac is used in the Sitting Room and a rich complementary paisley design from Clarence House enhances the Bedroom. Both fabrics are treated with Zepel by Du Pont. The Antron carpet is by Karastan. Unusual features of the suite are festive canopies hung from the ceiling; both are intricately decorated by hand.

GRAND BALLROOM

Boiseries in Trianon white with blue and gold leaf niches flank stage in Grand Ballroom. Canova-style statues in Carrara marble and crystal and bronze doré chandeliers evoke epoch of Le Roi Soleil. Karastan created 3,000 square yards of custom carpeting for the room which seats a thousand for dinner and dancing.

ZINDABAD PUB

The Zindabad Pub is divided into three intimate rooms. The love seats heaped with pillows in authentic Indian fabric are by McGuire and covered with striped orange and turquoise silk from Clarence House. Clarence House wallcovering fabric is laminated to one-quarter inch polyurethane foam for sound absorption and coated with Du Pont's Zepel. The same fabric is employed in a tent effect for the ceiling. Custom-made screen against rear wall depicts a romantic scene in strings of multicolored Indian glass beads.

DON QUIXOTE PATIO AND POOL

Baroque Patio and Pool Area is gaily decorated with murals by Luis Medina and tiles and ceramics from Talavera, Spain. Fragrant lemon and orange trees are placed about the patio. The pool is a copy of Sophia Loren's.



lacking: bidets and hand-showers in all suites, Jacuzzi jets in some bathtubs!

Another Courtright friend, Dalton O'Connor, of Magnavox, produced custom cabinets and pedestal designs, as well as hand-carved turntables, to harmonize with the different styles, for their famous color television sets whose "Total Automatic Color" provides true color and perfectly tuned pictures on every channel. There are custom-made consoles with extra-large screens in the sitting rooms and in adjoining bedrooms, exemplifying Magnavox's excellent craftsmanship.

For the Grand Ballroom and Winter Garden, Marcelle designed graceful stacking chairs in anodized aluminum simulating bamboo. These revolutionary chairs were produced by Tri-Par, who realized they would be in an internationally famous "showcase."

Concurrently, 10,000 miles away in India, artists of the Naika Theatre Trust, directed by one of India's most famous women, Kamaladevi Chattopadhyay, made to order several decorative items for what has since become the most talked-of rendezvous in Los Angeles, the Zindabad Pub, from the Urdu toast meaning "live happy." It features an Indian love scene, one of its kind: a larger-than-life portrait of a maharaja and his maharini, made of literally thousands of multicolored beads.

Desks and beds on the Avant Garde floor could not be banal. When they could not be found, Marcelle set herself to design them. Thonet provided chrome chairs upholstered in black rawhide. Walter Guinan's Karastan supplied made-to-order carpeting.

Fascinating Italian white enameled bed lamps with molded curves, large opaline mushrooms softly illuminating the kid-glove leath-ered sofas were added. All this and more, such as black and white Carrara marble bathrooms, was keyed in the Avant Garde floor, to a stunning focal display of "graphisms" by the award-winning artist of eight Biennales Grand Prix, Jean Pierre Vararely, who signs his work "Yavaral."

Hearing what was happening, Cleon Knapp, editor, publisher and *deus ex machina* of the prestigious *Architectural Digest*, came to see for himself. Hotel interiors have

seldom been pictured in his magazine. He talked with the Courtright, went from floor to floor in the Beverly Wing, and returned accompanied by the internationally famed photographer, Alexandre Georges. Result: *Architectural Digest* published nine pages of color photographs, taking its readers from El Camino Real on a tour of the Beverly Wing. Each picture tells a part of the story, while all combine to show why, through the gates and along the Royal Road, come diplomats, merchants, princes, celebrities of films and arts, aristocrats, politicians business executives, athletes, social "names" as varied as President Echeverria, David Rockefeller, Spiro Agnew, Prince and Princess de Borbon, Barbara Hutton, Frank Stanton, Omar Sharif, Rex Harrison, Mark Spitz, the Kennedys, Jacques Cousteau, Sidney Poitier, Jack Lord, Stanley Marcus, Art Buchwald, and a stream of others who want the best. That is what they get. So do less publicized travelers, equally welcome and made to feel at home.

"Mi casa es su casa." Join a thousand guests at a function in The Grand Ballroom designed by Pierre Scapula, where you dine amidst boiserie in Trianon white, blue and gold leaf; gigantic niches flanking the stage, framing Carrara statues in the style ascribed to Canova; mission arches covered in white Carrara marble draped in yellow silk; antique mirrors reflecting light from bronze doré chandeliers with hand-cut crystal lanterns; marble pilasters matched by hand-sculptured balustrades of the same Rouge-Incarnat marble used at Versailles.

Or come as a weary traveler wanting only rest and comfort and a sense of being a valued guest. On the Spanish floor, you will enjoy headboards upholstered in hand-painted calf leather, arm-chairs covered with hand-embroidered fabric typical of glorious 16th-century workmanship. It took two years to complete sixty yards of this precious stuff! Or try the California floor, corridor walls are in sky-blue vinyl fancifully lit by white Oriental-style sconces and lanterns edged with little bells. Some rooms have walls covered with sun-drenched flowered fabrics from Boussac, Chippendale chairs, easy chairs upholstered in yellow high-grade leather or suede,

designed by Marcelle, beautifully executed by Flair, Inc., of North Carolina. Others are more firmly masculine. All bathroom floors and walls are in Rosa Aurora, Brèche Nouvelle or Rouge Royal marble.

Now splurge, and take a two-story townhouse suite. Each of these is different from the rest, decorated to chime with the artistic creator to whom it is dedicated: Andrés Segovia, José Ferrer and Hernando Courtright, for Spain; Dolores del Rio and Rufino Tamayo, for Mexico; Bob Hope, James Stewart, Millard Sheets, Irene Dunne, for California; Christian Dior, Marc Bohan, Pierre Scapula, Omar Sharif, and Roger Vivier for France. And, as avant-garde archetypes, Jean Pierre and Michele Vasarely, Yves St.-Laurent, Yves Vidal, and four famed architects, Edward Stone, William Pereira, MacDonald Becket and Charles Luckman.

It may be that, like Hernando Courtright, you have an affection for champagne and for its famous labels. In that case, on the eighth floor of the Beverly Wing there are suites that do justice to their namesakes: Moët and Chandon, Taittinger, Louis Roederer, Laurent Périer, Bollinger, Lanson, Veuve Cliquot, Krug, Charles Heidsick, Pol Roger, Mercier. Or, possibly, if you are on your honeymoon, a special anniversary or are still fortunate enough to be a little sentimental, ask to see the suite named Principes de Borbon in honor of the royal couple, its first occupants. Candlelit, subtly perfumed by incense, exotic, romantic, with an authentic flair of the Far East, it brings Royal India to Beverly Hills!

"The greatness of a city," Hernando Courtright says, "is measured by the standards of its hotels. The more superior, the more respect the city will command. To visitors, it is the way in which they are received, the warmth of their welcome, the comfort and beauty they find during even the briefest stay, that make the strongest impression, a measure of the heartbeat of a city." Which offers reason enough, though there is more, for you, too, to drive through the palatial gates that never close, along the Royal Road, and see for yourself how "the impossible dream" of Hernando and Marcelle Courtright has come true, in the heart of Los Angeles, California.