

**The original documents are located in Box 43, folder “Proposed Schedules - Mrs. Ford (10)” of the Betty Ford White House Papers, 1973-1977 at the Gerald R. Ford Presidential Library.**

### **Copyright Notice**

The copyright law of the United States (Title 17, United States Code) governs the making of photocopies or other reproductions of copyrighted material. Betty Ford donated to the United States of America her copyrights in all of her unpublished writings in National Archives collections. Works prepared by U.S. Government employees as part of their official duties are in the public domain. The copyrights to materials written by other individuals or organizations are presumed to remain with them. If you think any of the information displayed in the PDF is subject to a valid copyright claim, please contact the Gerald R. Ford Presidential Library.

7/4/76 NYC "Operation  
Sail





THE WHITE HOUSE

WASHINGTON

JULY FOURTH

BICENTENNIAL ACTIVITIES

SUNDAY - JULY 4, 1976

Departure: 6:55 A.M.

From: Terry O'Donnell

BACKGROUND

ST. JOHN'S EPISCOPAL CHURCH/D.C. DEPARTURE

You and Susan will depart the South Grounds via motorcade at 6:55 a.m. en route St. John's Episcopal Church for a Special Holy Communion Bicentennial Observance Service taking place in the chapel area to the left as you enter the Church. In addition to you and Susan, several of the Senior White House Staff will be attending this special service.

Dr. Harper, while undergoing a routine physical recently, discovered a problem with his heart and is scheduled for open heart surgery on Tuesday. You and Susan may want to wish him well.

The motorcade arrives back at the White House at 7:30 p.m. and at 7:40 a.m., you and Susan board the helicopter for the 1 hour, 5 minute flight to Valley Forge State Park. Secretary Kleppe and Representative Richard T. Schulze will be guests aboard the helicopter.



VALLEY FORGE PARK, VALLEY FORGE, PENNSYLVANIA

Governor Milton Shapp (D-Pa.), Senator Hugh Scott, (R-Pa.), and Senator Richard Schweiker (R-Pa.) will be on hand to greet you as your helicopter arrives at the Valley Forge Park at 8:45 a.m. You proceed onto the dais on the platform, passing in front of the First Troop Philadelphia City Cavalry. Governor Shapp will introduce you for remarks which will be on LIVE NATIONWIDE TELEVISION.

At the conclusion of your remarks, Governor Shapp will invite you to visit the Wagon Train Encampment. Lt. Governor Ernest Kline will offer a narrative as you and the party view the train. At the Michigan Wagon, you will sign the symbolic Rededication Scroll, as have some 22 million Americans.

Following the tour of the encampment, you will sign H.R. 5621, making Valley Forge a National Historical Site. George Washington's desk will be used as the signing table. No remarks are required. A wagon will be behind the desk and Congressional guests will flank the table.

The Valley Forge State Park Bicentennial activities are hosted by the Bicentennial Commission of Pennsylvania. The Park has been provided as the rendezvous point for approximately 60 official wagons, one from each State plus some Pennsylvania lead wagons and chuckwagons, forming the Bicentennial Wagon Train Pilgrimage. The Pilgrimage is sponsored by commercial concerns including several of the Nation's largest corporations. The wagons are authentic replicas of the Conestoga wagon and the Prairie Schooner.

The Wagon Train Pilgrimage to Pennsylvania is a replay of history in reverse with the wagons traveling from West to East to bring the country back to its birthplace. Six traveling routes in all were employed with the first train from the Northwest beginning on June 8, 1975. Over 20,000,000 Americans have affirmed their recommitment to this Nation's democratic ideals on "Rededication Scrolls" the Wagon Train Pilgrimage is delivering to Valley Forge.

Valley Forge and its history have no direct link to the wagon trains aside from the fact that it has been offered as the rendezvous point. Thus, the bill signing ceremony making Valley Forge a National Park is to be done as a special event independent of the Wagon Pilgrimage.



PHILADELPHIA

Your helicopter departs Valley Forge at 9:40 a.m. en route the 20-minute flight to Philadelphia. Guests on board will be Senator Hugh Scott (R-Pa.), Senator Schweiker (R-Pa.), Governor Milton J. Shapp, and Governor Robert Ray. Mayor and Mrs. Frank Rizzo (D-Phil.) will greet you on arrival and accompany you and Susan in your car to Independence Hall (3-minutes driving time).

The program includes remarks by Charlton Heston, Master of Ceremonies, Cardinal Krol, Mayor Rizzo, Governor Shapp, Chappy James, and J. Willard Marriott. Mayor Rizzo introduces you for remarks which will be carried on LIVE NATIONWIDE TELEVISION.

Following the Independence Hall ceremony, you and Susan will motorcade (5 minutes) to Bellevue Stratford Hotel for 35-minutes personal time followed by a head table reception and the Mayor's Luncheon. Mayor Rizzo will introduce you for remarks. You will depart prior to luncheon service, motorcade (5-minutes) to the helicopter zone for the 45-minute flight to the USS FORRESTAL.

INTERNATIONAL NAVAL REVIEW/"OPERATION SAIL" 1976

Your helicopter arrives on the USS FORRESTAL flight deck at 1:45 p.m. After greeting Admiral Isaac C. Kidd, Jr., USN, CINCLANTFLT, and Captain Joseph J. Barth, USN, USS FORRESTAL Commanding Officer, you proceed through the Sideboys to "Honors" position where you are met by Secretary of the Navy William Middendorf, II, and Ambassador Emil Mosbacher, Jr. OPSAIL Chairman. After pausing for "Honors" Secretary Middendorf and Ambassador Mosbacher escort you past the Honor Guard and you proceed to the dais area for seating.

After remarks by John Warner, Bicentennial Commission Chairman, identifying the significance of the ringing of the Bicentennial Bell, you ring the Bell thirteen times; then Secretary Middendorf introduces you for remarks. As you depart en route the helicopter, Henry Catto will introduce you to members of the Diplomatic Corps. The helicopter departs at 2:35 p.m., circles Liberty Island and Ellis Island, and overflies the ships in Operation Sail '76 before landing on the flight deck of the USS NASHVILLE.

The activities aboard the USS FORRESTAL are on LIVE NATIONWIDE TELEVISION.

SEE ENCLOSED FOLDERS on International Naval Review and "Operation Sail"





Captain William Guthrie, Amphibious Squadron Six Commander and Captain Herbert Dowse, USN, USS NASHVILLE Commanding Officer will meet you, Mrs. Ford, and Susan as you land at 3:00 p.m. on the USS NASHVILLE and introduce you to a contingent of Operation Sail Cadets for an informal briefing on Tall Ships, then, escorted by the Cadets, you proceed to the edge of the Flight Deck to observe the passing of Tall Ships from Operation Sail. You will be joined by Cadets from each country participating in Operation Sail and you will be asked to cut a traditional cake commemorating the Bicentennial.

Following these activities, you reboard the helicopter and depart en route Newark Airport (10 minutes flying time) where you board Air Force One at 3:40 p.m. for the 45 minute flight to Washington National Airport.

The helicopter arrives on the South Lawn at 4:35 p.m.

# # # # #



SEQUENCE

CHURCH SERVICES - ST. JOHN'S EPISCOPAL CHURCH

6:55 a.m.  
EDT

You board motorcade on the South Grounds and Depart en route St. John's Episcopal Church.

6:58 a.m.

Motorcade arrives St. John's Episcopal Church.

OPEN PRESS COVERAGE  
CLOSED ARRIVAL

You will be met by:

Mr. Donald Gray, Usher

Escorted by Donald Gray, you proceed inside the church and are seated for a Special Holy Communion Bicentennial Observance Service.

7:00 a.m. Communion Service begins.

7:20 a.m. Communion Service concludes.

7:20 a.m.

Escorted by Pastor John C. Harper, you depart church en route motorcade for boarding.

7:27 a.m.

Motorcade departs St. John's Episcopal Church en route South Grounds.

7:30 a.m.

Motorcade arrives South Grounds.

You proceed inside the Diplomatic Entrance to greet Susan and to subsequently escort her aboard helicopter.

VALLEY FORGE STATE PARK BICENTENNIAL ACTIVITIES

7:40 a.m.

You and Susan board helicopter on the South Lawn and Depart en route Valley Forge Park, Valley Forge, Pennsylvania.

(Flying time: 1 hour, 5 minutes)

PRESIDENTIAL GUESTS

Secretary Thomas S. Kleppe

Representative Richard T. Schulze (R-Pa.)



8:45 a.m.  
EDT  
Advanceman:  
B. Bass

Helicopter arrives Valley Forge Park,  
Valley Forge, Pennsylvania.

LIVE NATIONWIDE TELEVISION  
CROWD SITUATION

"Ruffles and Flourishes"  
Announcement  
"Hail to the Chief"

You and Susan will be met by:

Governor Milton Shapp (D-Pa.)  
Senator Hugh Scott (R-Pa.)  
Senator Richard Schweiker (R-Pa.)

You and Susan, escorted by the greeters,  
proceed to the dais for seating.

NOTE: En route dais, you and Susan will  
pass in front of the First Troop  
Philadelphia City Calvary. At the end  
of this Honor Guard, you will offer a  
handshake to Calvary Captain Stanley  
Bright III.

8:50 a.m.

You and Susan arrive dais and are seated.

8:51 a.m.

Welcoming remarks and intro-  
duction of Platform Guests by  
Governor Shapp, concluding in  
the introduction of you.

8:55 a.m.

PRESIDENTIAL REMARKS

LIVE NATIONWIDE TELEVISION

9:10 a.m.

Remarks conclude.

You return to your seat.

9:11 a.m.

Benediction by Bishop Dominic  
Ferrara.

9:13 a.m.

Governor Shapp invites you to  
visit the Wagon Train Encampment.

9:14 a.m.

Musical Medley.





9:14 a.m.

You and Susan, escorted by Governor Shapp, depart dais en route Wagon Train Encampment.

NOTE: Lt. Governor Ernest Kline will offer a narrative as you and your party view the Wagon Train Encampment and participate in the subsequent Bill Signing.

9:17 a.m.

You and Susan arrive Encampment area, view the Wagons and meet the Wagon Train pilgrims.

#### LIVE NATIONWIDE TELEVISION

NOTE: On arriving at the Michigan Wagon, the Governor will present you with a symbolic Rededication Scroll, which you will sign, as have in excess of 22 million other American citizens.

9:27 a.m.

You and Susan depart Wagon Train area en route Bill Signing area.

9:30 a.m.

You arrive Bill Signing Area and are seated at the Signing Table.

#### LIVE NATIONWIDE TELEVISION

You sign H.R. 5621 (S. 1776) making Valley Forge a National Historical site.

#### VALLEY FORGE DEPARTURE/PHILADELPHIA ARRIVAL

9:35 a.m.

You thank the guests and depart en route helicopter for boarding.

9:40 a.m.

You and Susan board helicopter and depart Valley Forge en route Philadelphia, Pennsylvania.

(Flying time: 20 minutes)

#### PRESIDENTIAL GUESTS

Governor and Mrs. Robert Ray  
Governor Milton J. Shapp  
Senator Hugh Scott (R-Pa.)  
Senator Richard S. Schweiker (R-Pa.)





10:00 a.m.  
EDT  
Advanceman:  
A. Stern

Helicopter arrives Philadelphia Helo  
Landing Zone (Second and Walnut Streets),  
Philadelphia, Pennsylvania.

PRESS POOL COVERAGE  
CLOSED ARRIVAL

You and Susan will be met by:

Mayor and Mrs. Frank Rizzo (D-Philadelphia)

You and Susan, escorted by the Rizzos,  
proceed to motorcade for boarding. Mayor  
and Mrs. Rizzo and Susan will ride with  
you.

10:05 a.m.

Motorcade departs Helo Landing Zone  
en route Independence Hall.

10:08 a.m.

Motorcade arrives Independence Hall  
(Sixth Street entrance).

PRESS POOL COVERAGE  
CLOSED ARRIVAL

You and Susan will be met by:

Mr. and Mrs. Albert V. Gaudiosi,  
Philadelphia Special Events Chairman.

NOTE: Mrs. Gaudiosi will present  
flowers to Susan on behalf of  
the City of Philadelphia.

You and Susan arrive Independence Hall  
foyer and greet platform guests.

10:12 a.m.

Introduction of the platform  
guests onto dais.

NOTE: You will be asked to sign  
a Commemorative Book for the  
National Park Service and the  
Bicentennial Commission.

10:15 a.m.

"Ruffles and Flourishes"  
Announcement  
"Hail to the Chief"



10:15 a.m.

You and Susan pass through the Front Door of Independence Hall en route dais for seating.

LIVE NATIONWIDE TELEVISION  
CROWD SITUATION

10:17 a.m. Welcome by Charlton Heston, Master of Ceremonies.

10:18 a.m. Invocation by John Cardinal Krol, Archbishop of Philadelphia.

10:21 a.m. National Anthem by U.S. Armed Forces Band.

10:24 a.m. Pageant of Flags, narrated by Larry Kane, local television anchorman.

10:32 a.m. Pledge of Allegiance by Lt. Col. John Dramesi, USMC, Former Vietnam Prisoner of War.

10:34 a.m. Remarks by Mayor Rizzo.

10:40 a.m. Remarks by Governor Shapp.

10:46 a.m. Excerpts from the Declaration of Independence by Marian Anderson.

10:49 a.m. Thanksgiving by Rabbi Bzekiel H. Musleah, Congregation Mikveh Israel.

10:51 a.m. Remarks by City Council President George Schwartz.

10:52 a.m. Introduction of Guest Speakers by Charlton Heston.

10:53 a.m. "What America Means to Me."

J. Willard Marriott, Marriott Corporation Board Chairman  
Gen. Daniel James, USA, NORAD Commander-in-Chief  
Miss Lenny J. Hallgren, America's Junior Miss of 1976

10:59 a.m. Prayer for World Peace by Archbishop Iakovos, Primate, Greek Orthodox Church.

11:01 a.m. Introduction of the President by Mayor Rizzo.



11:02 a.m.

## PRESIDENTIAL REMARKS

LIVE NATIONWIDE TELEVISION

11:17 a.m.

Remarks conclude.

11:19 a.m.

Benediction by Reverend Leon Sullivan, Zion Baptist Church Pastor.

11:21 a.m.

"The Liberty Bell" by the All-Philadelphia Boys Choir.

11:23 a.m.

Closing remarks by Charlton Heston.

11:25 a.m.

Musical Medley.

11:25 a.m.

You and Susan, escorted by Mayor Rizzo, depart dais en route motorcade for boarding.

11:30 a.m.

Motorcade departs Independence Hall en route Bellevue Stratford Hotel. Mayor and Mrs. Rizzo and Susan will ride with you.

11:35 a.m.

Motorcade arrives Bellevue Stratford Hotel (Walnut Street entrance).

PRESS POOL COVERAGE

CLOSED ARRIVAL

You and Susan will be met by:

Mr. Michael Chadwick, Hotel Vice President

You and Susan proceed inside en route Suite (Room 1500).

11:40 a.m.

You and Susan arrive Suite.

PERSONAL: 35 minutes.

12:15 p.m.

You and Susan depart Suite en route Head Table Reception (Crystal Room).

12:20 p.m.

You and Susan arrive Crystal Room and informally greet Head Table Reception guests.

PRESS POOL COVERAGE

ATTENDANCE: 30





You and Susan will be met by:  
Mayor and Mrs. Frank Rizzo

12:30 p.m. Head Table guests proceed onto dais.

12:35 p.m. "Ruffles and Flourishes"  
 Announcement  
 "Hail to the Chief"

12:35 p.m. You and Susan, escorted by Mayor Rizzo,  
 proceed onto Grand Ballroom dais for  
 Mayor's Luncheon.

PRESS POOL COVERAGE  
 ATTENDANCE: 1400

12:37 p.m. You and Susan arrive dais and remain standing.

12:37 p.m. National Anthem by the Philadelphia  
 Police and Fire Band.

12:40 p.m. Invocation by Reverend Leon Sullivan.

12:42 p.m. Introduction of you by Mayor Rizzo.

NOTE: The Mayor will present you with a  
 large silver bowl, a gift to the people of  
 the United States from the people of  
 Philadelphia.

12:44 p.m. PRESIDENTIAL REMARKS

PRESS POOL COVERAGE

12:47 p.m. Remarks conclude.

You thank the luncheon guests and you and  
 Susan depart dais en route motorcade for  
 boarding.

12:50 p.m. Motorcade departs Bellevue Stratford Hotel  
 en route Helo Landing Zone (Second and  
 Walnut Streets).

(Driving time: 5 minutes)

12:55 p.m. Motorcade arrives Helo Landing Zone.

PRESS POOL COVERAGE  
 CLOSED ARRIVAL

PHILADELPHIA DEPARTURE/BICENTENNIAL ACTIVITIES ABOARD  
USS FORRESTAL AND USS NASHVILLE

1:00 p.m.



You and Susan board helicopter and depart  
 Philadelphia, Pennsylvania, en route USS  
 Forrestal in New York Harbor, New York.

(Flying time: 45 minutes)

1:45 p.m.

EDT

Advanceman:

M. Fisher

Helicopter arrives USS Forrestal  
Flight Deck.

LIVE NATIONWIDE TELEVISION  
CROWD SITUATION

Announcement.

You and Susan will be met by:

Admiral Isaac C. Kidd, Jr., USN  
CINCLANTFLT, Captain Joseph J. Barth,  
USN, USS FORRESTAL Commanding Officer.

You proceed through the Sideboys to  
"Honors" position.

NOTE: Susan, escorted by  
Admiral Kidd and Captain Barth,  
follow you.

1:47 p.m.

You arrive "Honors" position and pause.

You will be met by:

Honorable William Middendorf II, Secretary  
of the Navy  
Ambassador Emil Mosbacher, Jr., OPSAIL  
Chairman

"Ruffles and Flourishes"  
"Hail to the Chief"  
21-gun Salute

Escorted by Secretary Middendorf and  
Ambassador Mosbacher, you proceed past  
the Honor Guard en route dais area.

NOTE: Susan, escorted by  
Admiral Kidd and Captain Barth,  
will proceed directly to dais  
for seating. Mrs. Ford will  
have arrived and will be there  
also.

1:50 p.m.

You arrive dais area and are seated.

1:51 p.m.

Welcoming remarks by Ambassador  
Mosbacher.



1:54 p.m.

National Anthem.

1:57 p.m.

Remarks identifying the significance of the ringing of the Bicentennial Bell by John Warner, Bicentennial Commission Chairman.

1:58 p.m.

Escorted by John Warner, you proceed to the Bicentennial Bell.

2:00 p.m.

You ring the Bicentennial Bell thirteen (13) times.

NOTE: The Bicentennial Bell, signifying the commemoration of the 2:00 p.m., July 4th, 1976 ringing of the Liberty Bell, begins the simultaneous ringing of bells across America.

2:02 p.m.

Escorted by John Warner, you return to your dais seat.

2:05 p.m.

Introduction of you by Secretary Middendorf.

2:08 p.m.

PRESIDENTIAL REMARKS.

LIVE NATIONWIDE TELEVISION

2:15 p.m.

Remarks conclude.

You remain at the podium to receive a brief "thank you" by Secretary Middendorf.

You, Mrs. Ford, and Susan; escorted by Secretary Middendorf and Ambassador Mosbacher, depart dais en route Diplomatic Corps Receiving Line.

2:18 p.m.

You, Mrs. Ford and Susan arrive Diplomatic Receiving Line and are introduced to the members of the Diplomatic Corps by Ambassador Henry Catto en route helicopter for boarding.

LIVE NATIONWIDE TELEVISION





2:35 p.m.

Helicopter departs USS FORRESTAL  
en route USS NASHVILLE, New York  
Harbor.

(Flying time: 25 minutes)

PRESIDENTIAL GUESTS

Ambassador Emil Mosbacher, Jr.

Senator Jacob Javits

Secretary William Middendorf II

NOTE: En route USS NASHVILLE, helicopter  
will circle Liberty Island (Statue of  
Liberty) and Ellis Island, followed by  
an overflight of the ships in Operation  
Sail '76.

3:00 p.m.

Helicopter arrives USS NASHVILLE  
Flight Deck.

PRESS POOL COVERAGECLOSED ARRIVALAnnouncement

You, Mrs. Ford and Susan will be met by:

Captain William Guthrie, Amphibious  
Squadron Six Commander

Captain Herbert Dowse, USN, USS NASHVILLE  
Commanding Officer

3:02 p.m.

You, escorted by Captains Guthrie and  
Dowse, proceed through the Sideboys.

3:05 p.m.

You, Mrs. Ford and Susan are introduced  
to a contingent of Operation Sail Cadets  
for an informal briefing on Tall Ships.

PRESS POOL COVERAGE

3:10 p.m.

You, Mrs. Ford and Susan, escorted by  
the Cadets, proceed to the edge of the  
Flight Deck to view the passing of Tall  
Ships from Operation Sail.

NOTE: You, Mrs. Ford and Susan will be  
joined by Cadets from each country  
participating in Operation Sail.  
Additionally, you will be asked to cut  
a traditional cake commemorating the  
Bicentennial.





3:20 p.m.

You, Mrs. Ford and Susan, escorted by Captains Guthrie and Dowse, thank the Cadets and proceed to helicopter for boarding.

NOTE: You will receive "Ruffles and Flourishes" as a departing honor from the USS NASHVILLE.

3:25 p.m.

You depart USS NASHVILLE en route Newark Airport, Newark, New Jersey.

(Flying time: 10 minutes)

3:35 p.m.

Helicopter arrives Newark Airport.

OPEN PRESS COVERAGE

CLOSED ARRIVAL

3:40 p.m.

You, Mrs. Ford and Susan proceed to Air Force One for boarding.

You depart Newark Airport en route Washington National Airport, Washington, D.C.

(Flying time: 45 minutes)

4:25 p.m.

AIR FORCE ONE arrives Washington

EDT

National Airport.

You, Mrs. Ford and Susan proceed to helicopter for boarding.

4:30 p.m.

Helicopter departs Washington National Airport en route South Lawn.

(Flying time: 5 minutes)

4:35 p.m.

Helicopter arrives South Lawn.



7-30/76 Jackson, Miss.  
Delegate Meetings



THE WHITE HOUSE

WASHINGTON

MISSISSIPPI VISIT

FRIDAY - JULY 30, 1976

Departure: 11:00 a.m.

Attire: Business Suit

From: Terry O'Donnell <sup>10</sup>

BACKGROUND

You and Mrs. Ford depart the White House via Helicopter at 11:00 a.m. en route Andrews Air Force Base for the 2 hour and 10 minute flight to Jackson, Mississippi. Your guests aboard Air Force One will be: Senator Griffin, Rep. Trent Lott (R-Miss.), Rep. Thad Cochran (R-Mississippi), and Harry Dent.

Upon arrival at Jackson you will be met by: Clarke Reed, Mississippi GOP Chairman, Senator Charles Pickering, Mississippi GOP Chairman Elect, Commissioner Doug Shanks, Mississippi PFC Co-Chairman, and Gil Carmichael, Mississippi PFC Co-Chairman.

You and Mrs. Ford motorcade (15 minutes) to the Coliseum Ramada Inn where, after 5 minutes in the Holding Room, you will proceed to Room #1 to meet with the Mississippi delegation.

The meeting will include 15 minutes of mingling, 40 minutes Q & A, and 20 minutes photo session. Background papers on the delegation is attached at TAB A.

Following the delegate meeting, you will proceed to your Suite for 55 minutes personal time. At 3:30 p.m. you will begin an hour and 10 minute session of private meetings in the following sequence:

3:30      Gil Carmichael, Co-Chairman of the Mississippi President Ford Committee

Doug Shanks, Co-Chairman of the Mississippi President Ford Committee





- 3:45     Clarke Reed, Mississippi State Republican  
          Chairman
- 3:55     Charles Pickering, Mississippi State Republican  
          Chairman-elect. Presently a State Senator.
- 4:00     Tom Giordano, Secretary of the Mississippi State  
          Republican Committee.

Following these meetings you will have an hour and 15 minutes personal time before proceeding to the GOP reception where you will mingle and following an introduction by Clarke Reed, deliver remarks.

You are scheduled to depart the reception at 6:00 p.m., motorcade to the airport, and depart Mississippi arriving back on the South Lawn at approximately 9:50 p.m.



SEQUENCE

11:00 a.m. You and Mrs. Ford board Marine One on the South Lawn and depart en route Andrews AFB. Harry Dent and possibly Senator Robert Griffin will be your guests aboard the helo.

11:15 a.m. Arrive Andrews AFB, board Air Force One and depart Andrews AFB en route Allen C. Thompson Field, Jackson, Mississippi. Guests aboard include:

Senator Griffin  
Rep. Trent Lott (R-Mississippi)  
Rep. Thad Cochran (R-Mississippi)  
Harry Dent

(Flying time: 2 hours, 10 minutes)  
(Time Change: -1 hour)

12:30 p.m. Arrive Allen C. Thompson Field where you will be met  
CDT by:  
Advanceman:  
A. Stern

Clarke Reed, Mississippi GOP Chairman  
Senator Charles Pickering, Mississippi  
GOP Chairman Elect  
Commissioner Doug Shanks, Mississippi  
PFC Co-Chairman  
Gil Carmichael, Mississippi PFC Co-Chairman

You and Mrs. Ford board motorcade and depart Allen C. Thompson Field en route Coliseum Ramada Inn.

(Driving time: 15 minutes)

12:55 p.m. Arrive Coliseum Ramada Inn where you and Mrs. Ford will be met by:

Robert Twig, Hotel General Manager

OPEN PRESS COVERAGE  
CLOSED ARRIVAL



1:00 p.m. Arrive Holding Room.

PERSONAL/STAFF TIME: 5 minutes

1:05 p.m. Depart Holding Room en route off-stage announcement area.

1:09 p.m. You and Mrs. Ford arrive off-stage announcement area and pause for announcement into Meeting of the Mississippi Delegation.

1:10 p.m. Announcement

You and Mrs. Ford enter Ramada Room #1 for Delegation Meeting.

- 15 minutes mingling
- 40 minutes Q & A
- 20 minutes Photo Session

OFFICIAL PHOTO COVERAGE  
ATTENDANCE: 60

2:25 p.m. You and Mrs. Ford thank the delegates and depart Ramada Room #1 en route motorcade for boarding.

2:30 p.m. Depart Ramada Inn's Main Building en route Hotel Wing.

(Driving time: 1 minute)

2:31 p.m. Arrive Hotel Wing. Proceed to Suite (4139)

PRESS POOL COVERAGE  
CLOSED ARRIVAL



2:35 p.m. You and Mrs. Ford arrive Suite.

PERSONAL/STAFF TIME: 55 minutes

3:30 p.m. Gil Carmichael, Co-Chairman of the Mississippi PFC and Doug Shanks, Co-Chairman of the Mississippi PFC arrive Suite for a 15 minute meeting.

3:45 p.m. Clarke Reed, Mississippi State Republican Chairman arrives Suite for a 10 minute meeting.

3:55 p.m. Charles Pickering, Mississippi State Republican Chairman-elect joins Gil Carmichael in Suite for a 5 minute meeting.

4:00 p.m. Tom Giordano, Secretary of the Mississippi State Republican Committee arrives Suite for a 10 minute meeting.

PERSONAL TIME: 1 hour 15 minutes



5:25 p. m.      You and Mrs. Ford depart Suite en route motorcade  
for boarding.

5:28 p. m.      Motorcade departs Hotel Wing en route Main Building.

5:29 p. m.      Arrive Main Building.

                  You and Mrs. Ford proceed to GOP Reception  
announcement area.

5:30             Arrive GOP Reception announcement area.

5:30 p. m.      Announcement

5:31 p. m.      Proceed into GOP Reception and greet guests.

PRESS POOL COVERAGE  
ATTENDANCE: 150

5:45 p. m.      Arrive platform.

5:46 p. m.      Introduction of you by Clarke Reed.

5:50 p. m.      PRESIDENTIAL REMARKS.

PRESS POOL COVERAGE

5:55 p. m.      Remarks conclude.

                  You and Mrs. Ford depart platform and continue to  
greet guests.

6:00 p. m.      Depart GOP Reception en route motorcade for boarding.

6:05 p. m.      Depart Ramada Inn en route Allen C. Thompson Field.

(Driving time: 15 minutes)

6:20 p. m.      Arrive Allen C. Thompson Field.

OPEN PRESS COVERAGE  
CLOSED DEPARTURE

NOTE: A microphone will be available in the  
press area for an informal press conference  
if desired.





6:25 p. m.            You and Mrs. Ford board Air Force One and depart  
Allen C. Thompson Field, Jackson, Mississippi  
en route Andrews AFB.

(Flying time: 2 hours)

(Time change: +1 hour)

9:30 p. m.            Arrive Andrews AFB  
EDT

9:35 p. m.            Marine One departs Andrews AFB en route South Lawn

(Flying time: 15 minutes)

9:50 p. m.            Arrive South Lawn.



## MISSISSIPPI DELEGATION

### DELEGATES

1. Mrs. Regina Pace (Dene)  
Corinth, Miss.

Dene Pace is an uncommitted delegate, leaning Ford. She teaches piano. She is a lifelong Republican who wants a winner in November. She is fond of Carmichael and is President of The Republican Women of Mississippi. She is interested in a united Party. We need to work on her. The First Lady telephoned her recently.

2. Mrs. Janice Rasch (Jan)  
Vicksburg, Miss.

Jan Rasch is an uncommitted delegate. She is Secretary of the County Executive Committee. Senator Griffin spoke to her 7/21/76. She told him that she likes you but doesn't want to commit. Griffin feels that she is with us. We need to work on her. The First Lady telephoned her recently. Cheney, Dent and Field met with on 7/25/76.

3. Dr. Ed Carruth (Ed)  
Madden, Miss.

Dr. Carruth is a soft Ford delegate. His doctorate is in education. Carruth is very patriotic and is very interested in a united Party that can win in the fall. Anti-unit rule. We need to work on him.

4. Dewey Lane (Dewey)  
Pascagula, Miss.

Dewey Lane is a soft Reagan delegate. He is a surgeon and an active member of the State Executive Committee. Lane wants to be with a winner in Kansas City. Cheney, Dent and Field met with on 7/25/76.



5. Abigail Healy (Gail)  
Mississippi

Gail Healy is a true uncommitted delegate. Reagan has talked to her twice. The press has played her up as uncommitted. She is a public relations guide for the Pilgrimage Garden Club. She served as co-chairwoman of Thad Cochran's and Gil Carmichael's campaign. The First Lady telephoned her recently. Cheney, Dent and Field met with on 7/25/76.

6. Mayor Clyde Whitaker  
Tupelo, Miss.

Mayor Whitaker is a soft Reagan delegate. He was elected in 1973. He was very pleased about a bill recently signed by you, which gives financial aide to small airports. It has been helpful to him. Needs attention. You telephoned him recently. Cheney, Dent and Field met with on 7/25/76.

7. Mayor William Patrick  
Laurel, Miss.

Bill Patrick is a soft Reagan delegate. He is Mayor of the City of Laurel and Chairman of the Mississippi Elected Republican Officials Association. He is interested in victory in November. Needs attention. He is anxious to be persuaded by you in a face-to-face personal meeting in Mississippi. Cheney, Dent and Field met with on 7/25/76.

8. Sam Alford  
McComb, Miss.

Soft Reagan delegate. Won't break unit rule. Hates Kissinger. Likes Carmichael, was Democrat. Supported Ray Gildea for TVA. Cheney, Dent and Field met with on 7/25/76.

9. Tom Anderson  
Gulfport, Miss.

AA to Trent Lott. Reagan.





10. C. P. Ball (C. P.)  
Starkville, Miss.

Strong Ford. Sells farm equipment. Willing to break unit rule.  
Cheney, Dent and Field met with on 7/25/76.

11. Gloria Beal  
Mound Bayou, Miss.

Ford. Black. Project Director at Delta State University in  
Child Development. We need to work on her.

12. Roland Byrd  
Louisville, Miss (Roland)

Reagan. Running for Congress in the 2nd District.

13. Gil Carmichael (Gil)  
Meridian, Miss.

Ford. Will break unit rule. Co-chairman of the Mississippi  
President Ford Committee and one of your strongest supporters.

14. Mrs. Miki Cassidy  
Marks, Miss.

Strong Ford. Senator Griffin spoke to her and she committed.  
The First Lady telephoned her recently. She is a very strong  
supporter of you and has been from the beginning. Cheney and  
Dent had dinner with her Sunday night.

15. Jerry Gilbreath  
Laurel, Miss.

Leaning Reagan. State Representative. Is a good target for  
switching. Needs attention. Cheney, Dent and Field met with  
on 7/25/76.

16. Malcolm Mabry, Jr.  
Dublin, Miss.

Reagan.



17. W.D. Mounger  
Jackson, Miss.

State Reagan Chairman. One of Mississippi 's principal fundraisers.

18. Charles Pickering  
Laurel, Miss.

Leaning Reagan but influenced by Reed. State Chairman-elect. He is presently a State Senator.

19. Clarke Reed  
Greenville, Miss.

Ford. Mississippi State Republican Chairman.

20. Mike Retzer  
Greenville, Miss.

Reagan. Influenced by Reed.

21. Doug Shanks  
Jackson, Miss.

Ford. Co-chairman of the Mississippi President Ford Committee. Presently one of three commissioners in Jackson. Has been an excellent worker for us in Mississippi.

22. Toxey Hall Smith (Toxey)  
Wiggins, Miss.

Uncommitted. Attorney. Past candidate for State Attorney General. Needs attention. Needs attention by RBC and you. You telephoned him recently. Cheney, Dent and Field met with on 7/25/76.

23. Bobbie Thomas  
Long Beach, Miss.

Reagan but works for Trent Lott. The First Lady telephoned her recently.



24. Ann Tindal  
Macon, Miss.

Leans Ford. Vice President Tindal Aviation, Inc. Likes Betty Ford. Dislikes grain embargo and has misconception that too much patronage is awarded through Senators Eastland and Stennis. Has problem with Secretary Butz. The First Lady telephoned her recently. Cheney, Dent and Field met with on 7/25/76.

25. Lillian Todd  
Jackson, Miss.

Reagan. The First Lady telephoned her recently.

26. Odell Tucker  
Greenwood, Miss.

Ford. Likes Carmichael. (He is the service station operator who has received quite a bit of National attention). Cheney, Dent and Field met with on 7/25/76.

27. Swan Yerger  
Jackson, Miss.

Reagan. One of the original founders of the Mississippi GOP.

28. Victor Mavar  
Biloxi, Miss.

Reagan Finance Chairman.

29. Jack Lee  
Union, Miss.

Ford. Runs a car dealership. Well educated. Carmichael supporter. Very interested in the Vice Presidency and that Reagan is considered. Cheney, Dent and Field met with on 7/25/76.

30. Bill Dease  
Jackson, Miss.

Ford. Dease is black and on record as willing to break the unit rule to vote for you. Cheney, Dent and Field met with on 7/25/76.





## ALTERNATES

1. Mr. Thomas Giordano (Tom)  
Pearl, Miss.

Mr. Giordano (age 37) is Secretary of the Mississippi Republican Party and was a delegate to the 1968 and 1972 conventions. He is President of the Giordano-Kirby Insurance Agency. He has managed several Congressional, Senatorial and Gubernatorial races in Mississippi. He has expressed great interest in the Rule 29 controversy, anti-busing, and a tax exemption for private schools.

You spoke to him Wednesday evening at which time he committed to you, and he has since taken a public posture in your favor. He is perhaps one of the three most influential Republicans within the State Party. Dick Cheney and Giordano have gotten along very well. Cheney, Dent and Field met with on 7/25/76.

2. Mr. C. L. Manderson (C. L.)  
Koscisko, Miss.

C. L. Manderson is a pro-Ford alternate. He is a die-hard Republican and looking for someone who can win in November and do well in Mississippi. He told Harry Dent that he prefers the President. We need to work on him. Cheney, Dent and Field met with on 7/25/76.

3. Reverend John Baker  
Brandon, Miss.

Ford. Black. Works as a supervisor of Employee Relations for Allis Chalmers. Wants a winner in November. Strong for Ford but needs our attention.

4. Mrs. Mary Bankston (Mary)  
Gulfport, Miss.

Ford. Bookkeeper, office manager of General Insurance Agency, and President of Harrison County Women's Federation. Strong for Ford but needs our attention. The First Lady telephoned her recently. Cheney, Dent and Field met with on 7/25/76.





5. Mrs. Edwin Dodson (Edwina)  
Clarksdale, Miss.

Leaning Ford. Assistant librarian. Likes Carmichael. Very active in Republican Women's politics. Philosophically oriented. The First Lady telephoned her recently. Cheney, Dent and Field met with on 7/25/76.

6. Colonel James Egger (Jim)  
Caledonia, Miss.

Uncommitted. Worked for Carmichael as Precinct Chairman. Vice Chairman of Lowndes County Executive Committee. Retired U.S. Army. Needs attention.

7. Gerald Gafford (Jerry)  
Oxford, Miss.

Soft Ford. Attorney. State Executive Committee 1962-72. Interested in winner in November. Told Dent that he would support you if you won the Florida primary and has vacillated on it. Need to be firm with him. Presidential call requested and made, (7/24/76).

8. Mrs. Jo Anne Goodgame (Jo Anne)  
Aberdeen, Miss.

Uncommitted. Housewife and part-time bookkeeper for husband. Recently elected Co-Chairwoman of Monroe County Executive Committee. Wants a winner in November. Electability key issue with her. Needs attention. The First Lady telephoned her recently.

9. Mrs. Kay Grey  
Jackson, Miss.

Ford. Doug Shanks sister. Will break unit rule. The First Lady telephoned her recently. Cheney, Dent and Field met with on 7/25/76.

10. E. C. "Bubba" Harris (Bubba)  
Pascagoula, Miss.

Ford. General Engineer for International Paper Company. Presently a City Councilman for Pascagoula. Chairman of Jackson County Executive Committee. Likes Carmichael. Cheney, Dent and Field met with on 7/25/76.



11. Mrs. Leota Hayes  
Jackson, Miss.

Reagan. The First Lady telephoned her recently. Cheney, Dent and Field met with on 7/25/76.

12. Mrs. Mary House  
Greenville, Miss.

Ford (soft). Teacher and housewife. Involved in Women's Federation. Father was Governor of Nebraska in 1907-1908. She is an older lady. The First Lady telephoned her recently. Cheney, Dent and Field met with on 7/25/76.

13. Mr. Joseph Jaber (Danny)  
Natchez, Miss.

Uncommitted. Chairman of Teenage Republicans (TARS). Supports Baker for Vice President. Butz will be calling him. Young and impressionable. Whoever gets to him last will win him.

14. Mr. Robert Kelly (Robert)  
Oxford, Miss.

Ford. Interested in foreign policy and electing you President. We need to work on him. Cheney, Dent and Field met with on 7/25/76.

15. Mrs. Mary Nell Knott  
Hazlehorst, Miss.

Ford. Housewife. Vice Chairwoman Capiah County Executive Committee. Has done campaign work for Carmichael, Thad Cochran and Doug Shanks. Very patriotic. Strong in our camp. The First Lady telephoned her recently.

16. Mr. Doug McCurley  
Jackson, Miss.

Reagan.

17. Jody Monsour

Solid Ford. Sales Representative for Sun Oil Corporation.



18. George Rea, Jr.  
Meridian, Miss.

Ford. CPA for Rea, Shaw, Griffin and Stuart. Chairman of Lauderdale County Executive Committee. Active in Carmichael campaign. Cheney, Dent and Field met with on 7/25/76.

19. Mrs. Veronica Ross  
Jackson, Miss.

Reagan. Billy Mounger's sister.

20. John Rushing  
Jackson, Miss.

Ford. President of Southern Rock, Inc--a construction company. Cheney, Dent and Field met with on 7/25/76.

21. John Simms  
Ocean Springs, Miss.

Uncommitted. New Executive Director of the Mississippi Republican Party. Law student. Personal friend of John Davis. Needs attention. We need to work on him.

22. Mr. James Speed  
Meridian, Miss.

Soft Reagan. This week he moved towards Reagan. Cheney, Dent and Field met with on 7/25/76.

23. Judy Williamson  
Columbus, Miss.

Reagan. This week she moved towards Reagan. The First Lady telephoned her recently.

24. Mrs. Elizabeth Ann Wilson (Ann)  
Pascagoula, Miss.

Ford. Likes Carmichael. Assistant to Secretary of HEW Matthews when he was at the University of Alabama. President of Jackson County Federation of Republican Women. Solid Republican. Make a point of thanking her for sending the telegram of support. A little confused. We need to work on her. The First Lady telephoned her recently. Cheney, Dent and Field met with on 7/25/76.





25. Mrs. Marian Word,  
Brandon, Miss.

Soft Ford. Housewife. Campaigned for John Tower. District Chairwoman for Thad Cochran. Big patriotic. Trying to get a telegram. Needs attention. We need to work on her. The First Lady telephoned her recently. Cheney, Dent and Field met with on 7/25/76.

26. Mrs. Jean Long  
Gulfport, Miss.

Ford. Black. Needs attention. We need to work on her.

27. Mr. John Green  
Grenada, Miss.

Ford. No bio. available. We need to work on him.

28. Mr. Steve Nunley  
Clarksdale, Miss.

Ford. No bio. available. Hard worker for you. Cheney, Dent and Field met with on 7/25/76.

29. Miss Debbie Graham  
Hattiesburg, Miss.

Ford. College student. Active in Young Republicans. Likes Carmichael. Moderate-liberal.

30. Eddie Stikes  
Mississippi State

Soft Reagan. 23 years old. Very impressionable. Wants a winner in November and someone who can help in Mississippi. Pay some attention. His youth gives us a shot if we make a good pitch.



8/10-11/76 NYC Bicen-  
tenial Salute to  
Duke Ellington



Revised:  
8/5/76 10:a.m.

PROPOSED SCHEDULE

MRS. FORD'S TRIP TO NEW YORK CITY  
Tuesday, Wednesday,  
August 10-11, 1976

Tuesday, August 10, 1976

2:15 p.m. Mrs. Ford boards motorcade on South Grounds.  
MOTORCADE DEPARTS South Grounds enroute Andrews  
Air Force Base.

(Driving time: 25 minutes)

2:40 p.m. MOTORCADE ARRIVES Andrews Air Force Base.  
Mrs. Ford boards C-9 #1681.

Manifest as follows:

Mrs. Ford	J. Ball
N. Chirdon	J. Bay
S. Weidenfeld	
K. Schumacher	
J. Kirk	

2:50 p.m. C-9 DEPARTS Andrews Air Force Base enroute LaGuardia  
International Airport.

(Flying time: 50 minutes)

3:40 p.m. C-9 ARRIVES LaGuardia International Airport  
(Marine Air Terminal).

ADVANCEMAN: MIKE SWINEHART

Mrs. Ford proceeds to motorcade for boarding.

Motorcade as follows:

Lead: M. Swinehart  
Mrs. Ford's car - Mrs. Ford  
Follow-up  
Staff: N. Chirdon  
S. Weidenfeld  
K. Schumacher  
J. Kirk





3:50 p.m. MOTORCADE DEPARTS Marine Air Terminal enroute  
Waldorf-Astoria Hotel.

(Driving time: 25 minutes)

4:15 p.m. MOTORCADE ARRIVES Waldorf-Astoria Hotel.

Mrs. Ford will be met by:

Mr. Frank G. Wageman, Sr. Vice Pres.,  
Hilton Hotels;  
Mr. Eugene Scanlan, Manager, Waldorf-  
Astoria.

Mrs. Ford escorted by Mr. Wageman and Mr. Scanlan,  
proceeds to suite.

4:20 p.m. Mrs. Ford arrives suite.

(Personal time: 3 Hours)

Room Assignments as follows:

Mrs. Ford	30A
N. Chirdon	30A
S. Weidenfeld	
K. Schumacher	
J. Kirk	30A
M. Swinehart	
S. Quenneville	

NOTE: Attire for evening event is long dress & business  
suit.

7:20 p.m. Mrs. Ford departs suite enroute motorcade for boarding.

7:25 p.m. MOTORCADE DEPARTS Waldorf-Astoria enroute Lincoln  
Center.

(Driving time: 15 minutes)

7:40 p.m. MOTORCADE ARRIVES Lincoln Center (New York State  
Theatre, Stage Door Entrance)

Mrs. Ford will be met by: Stanley Plesent, Chairman of  
the Board, Dance Theatre  
Foundation; Ruth Ellington;  
Alvin Ailee.



Mrs. Ford escorted by the above, proceeds to back-stage  
of theatre.

7:45 p.m. Mrs. Ford, escorted by the above, arrives Green Room to informally greet dance company and participants in photo session.

OPEN PRESS COVERAGE  
ATTENDANCE: 30

7:55 p.m. Mrs. Ford, escorted by the above, bids farewell to the dance company and proceeds to holding room.

PERSONAL TIME: 5 minutes

8:00 p.m. Mrs. Ford, escorted by the above, proceeds to off-stage holding area and pauses for curtain-up.

8:01 - Curtain-Up

8:01 p.m. Mrs. Ford, escorted by the above, proceeds onto stage to open Bicentennial Salute to Duke Ellington.

OPEN PRESS COVERAGE  
ATTENDANCE: 3,000

8:02 - Welcome by Mr. Plesent  
8:04 - Remarks by Alvin Ailee  
8:06 - Introduction of Mrs. Ford  
by Ruth Ellington.

8:08 p.m. Remarks by Mrs. Ford

FULL PRESS COVERAGE

8:10 p.m. Remarks conclude.

8:10 - Curtain Falls

8:11 p.m. Mrs. Ford, escorted by the above, departs stage enroute First Ring Theatre seats.

8:15 p.m. Mrs. Ford escorted by the above, arrives First Ring and takes her seat (B-101).

NOTE: A musical medley will be in progress - seat assignments as follows: S. Weidenfeld, C-102; N. Chirdon, B-110; K. Schumacher and J. Kirk, Aisle Seats.

8:25 - Medley concludes  
8:30 - "Night Creature"  
9:00 - Intermission I  
9:15 - "Pasde Duke"  
9:40 - Intermission II  
10:00 - Caravan  
10:45 - Program concludes



10:45 p.m. Mrs. Ford bids farewell and departs Theatre enroute motorcade for boarding.

10:55 p.m. MOTORCADE DEPARTS Lincoln Centre enroute Waldorf-Astoria.

(Driving time: 15 minutes)

11:10 p.m. MOTORCADE ARRIVES Waldorf-Astoria; Mrs. Ford proceeds to suite.

11:15 p.m. Mrs. Ford arrives suite.

### R O N

Wednesday, August 11, 1976

1:30 p.m. Mrs. Ford departs suite enroute motorcade for boarding.

1:40 p.m. MOTORCADE DEPARTS Waldorf-Astoria enroute Marine Air Terminal.

(Driving time: 25 minutes)

1:55 p.m. MOTORCADE ARRIVES Marine Air Terminal, La Guardia International Airport.

Mrs. Ford boards C-9.

Manifest as on arrival,  
except add M. Swinehart,  
S. Quenneville and A. Dalton.

2:05 p.m. C-9 DEPARTS LaGuardia International Airport enroute Andrews Air Force Base.

(Flying time: 50 minutes)

Lunch will be served on board.

2:55 p.m. C-9 ARRIVES Andrews Air Force Base.  
Mrs. Ford boards motorcade.

3:05 p.m. MOTORCADE DEPARTS Andrews Air Force Base enroute South Grounds.

(Driving time: 25 minutes)

3:30 p.m. MOTORCADE ARRIVES South Grounds.





Republican Nat'l. Convention  
Kansas City, Mo. 8/15-20/76



9/4-5/76 Chicago, Ill, 5th  
Lithuanian Folk Dance Fest.  
Shiloh Baptist Church



9/1/76  
10:30 a.m.

PROPOSED SCHEDULE

MRS. FORD'S VISIT TO CHICAGO, ILLINOIS

September 4-5, 1976

Saturday, September 4, 1976

11:30 a.m. Mrs. Ford departs Bass House enroute motorcade for boarding.  
MOTORCADE DEPARTS Bass House, Vail, Colorado, enroute Buckley Air National Guard Terminal, Denver, Colorado.

(Driving time: 2 hours)

1:30 p.m. MOTORCADE ARRIVES Buckley Air National Guard Terminal.  
Mrs. Ford boards C-9 (1682), Manifest as follows:

Mrs. Ford	USSS
S. Weidenfeld	USSS
K. Schumacher	USSS
J. Stouffer	

1:45 p.m. C-9 DEPARTS Denver, Colorado enroute Glenview Naval Air Station, Glenview, Illinois.

(Flying time: 2 hours)  
(Time change: + 1 hour)

4:45 p.m. C-9 ARRIVES Glenview Naval Air Station.  
CDT Mrs. Ford will be met by:

4:55 p.m. Mrs. Ford proceeds to motorcade for boarding.





Mrs. Ford  
Page Two

4:55 p.m. MOTORCADE DEPARTS Glenview Naval Air Station enroute  
Marriott's Lincolnshire Inn.

(Driving time: 15 minutes)

Motorcade as follows:

Lead	Pete Sorum
Mrs. Ford's car	Mrs. Ford
Follow-up	
Staff 1	S. Weidenfeld
	K. Schumacher
Staff 2	J. Stouffer
	P. Matson

5:10 p.m. MOTORCADE ARRIVES Lincolnshire Inn.

Mrs. Ford will be met by:

*Bob McClory & supporters*  
Mr. Robert Martin, Resident Manager

Mrs. Ford escorted by Mr. Martin proceeds to suite.

5:20 p.m. Mrs. Ford arrives suite.

FREE EVENING

Sunday, September 5, 1976

9:30 a.m. Mrs. Ford departs suite enroute motorcade for  
boarding.

9:40 a.m. MOTORCADE DEPARTS Marriott Hotel enroute Shiloh  
Baptist Church, Waukegan, Illinois.

Motorcade addition:

Rep. McClory in Mrs. Ford's

(Driving time: 20 minutes)

10:00 a.m. MOTORCADE ARRIVES Shiloh Baptist Church.  
Mrs. Ford will be met by:

Rev. Jonathan Lightfoot  
Mr. Robert Sabonjian, Mayor of Waukegan

Mrs. Ford, escorted by Rev. Lightfoot proceeds to  
Fellowship Hall.



*Pronounced  
Shiloh.  
It means  
"Hither to  
the Lord has  
brought us".  
Established  
in 1917,  
It is the  
1st Baptist  
Church in  
Waukegan.*



Mrs. Ford  
Page Three

10:10 a.m. Mrs. Ford arrives Fellowship Hall to informally greet community leaders.

OFFICIAL PHOTO COVERAGE  
ATTENDANCE: 50

10:25 a.m. Mrs. Ford, escorted by Rev. Lightfoot, departs Fellowship Hall enroute Sanctuary.

10:28 a.m. Mrs. Ford arrives Sanctuary and takes her seat with Mrs. Lightfoot and Mary Lacey (local gospel singer) for morning services. *26 years*

10:30 - Choir processional and anthem  
NOTE: Order of service will be published to include music by three choirs, readings from scripture and a sermon by Rev. Lightfoot.  
11:55 - Service concludes.

11:55 a.m. Mrs. Ford, escorted by Rev. Lightfoot, departs Sanctuary enroute motorcade for boarding.

12 Noon MOTORCADE DEPARTS Shiloh Baptist Church enroute Stockyard Inn, Chicago, Illinois.

Motorcade, delete Rep.  
McClory from Mrs. Ford's car.

(Driving time: 1 hour, 20 minutes)

1:20 p.m. MOTORCADE ARRIVES Stockyard Inn.  
Mrs. Ford will be met by:

Mr. Valdas Adamkus  
Mrs. Josephine Dauzvardis, Consul General of Lithuania  
Senator Charles Percy (R-Ill.)  
Four children

OPEN PRESS COVERAGE

Mrs. Ford proceeds to holding room.





Mrs. Ford  
Page Four

1:25 p.m. Mrs. Ford arrives holding room.

PERSONAL TIME; 15 minutes

1:40 p.m. Mrs. Ford departs holding room enroute CMD Club.

1:45 p.m. Mrs. Ford arrives CMD Club to participate in VIP Reception-Receiving Line.

OFFICIAL PHOTO COVERAGE  
ATTENDANCE: 150

2:05 p.m. Mrs. Ford departs CMD Club enroute International Amphitheatre.

2:10 p.m. Mrs. Ford arrives International Amphitheatre offstage announcement area and pauses for announcement.

2:14 - Announcement

2:14 p.m. Mrs. Ford enters arena and proceeds to platform to take her seat.

OPEN PRESS COVERAGE  
ATTENDANCE: 12,000

2:15 - Procession of Flags  
2:18 - National Anthem  
2:22 - Parade of Dancers  
2:25 - Remarks by Bruno Juodelis,  
Event Chairman  
2:28 - Remarks by Senator Percy  
2:30 - Introduction of Mrs. Ford by  
Mr. Adamkus

2:32 p.m. Remarks by Mrs. Ford

FULL PRESS COVERAGE

2:33 p.m. Remarks conclude.

2:35 p.m. Mrs. Ford, escorted by Mr. Adamkus and Senator Percy proceeds across arena floor to VIP box seating.

2:40 p.m. Mrs. Ford arrives VIP box and takes her seat.

2:40 - Dance Program begins  
3:15 - Dance Program concludes with  
Virginia Reel.





Mrs. Ford  
Page Five

3:15 p.m. Mrs. Ford departs VIP box enroute motorcade for boarding.

3:20 p.m. MOTORCADE DEPARTS International Amphitheatre enroute  
Midway Airport.

Motorcade, add Senator Percy  
to Mrs. Ford's car.

(Driving time: 20 minutes)

3:40 p.m. MOTORCADE ARRIVES Midway Airport.  
Mrs. Ford boards C-9.

3:50 p.m. C-9 DEPARTS Midway Airport enroute Andrews Air Force  
Base.

(Flying time: 1 hour, 35 minutes)  
(Time change: + 1 hour)

Manifest as on arrival except  
add Senator Percy, P. Sorum,  
P. Matson, F. Dominico, C.  
Porembka.

6:25 p.m. C-9 Arrives Andrews Air Force Base  
EST Mrs. Ford boards motorcade.

6:35 p.m. MOTORCADE DEPARTS Andrews Air Force Base enroute  
South Grounds.

(Driving time: 25 minutes)

7:00 p.m. MOTORCADE ARRIVES South Grounds.



## THE WHITE HOUSE

WASHINGTON

August 26, 1976

MEMORANDUM TO: PETER SORUM  
FROM: SUSAN PORTER  
SUBJECT: Action Memo

Mrs. Ford has accepted the following out-of-town invitations:

EVENT: Fifth Lithuanian Folk Dance Festival

GROUP: Lithuanian-American Community of the U.S.A., Inc.

DATE: Sunday, September 5, 1976

TIME: 2:00 p.m.

PLACE: International Amphitheatre  
4300 South Halstead Street  
Chicago, Illinois

CONTACT: Mr. Val Adamkus  
O: 312-353-2000  
H: 312-737-0638

COMMENTS: The Lithuanian-American Community is sponsoring the Fifth Lithuanian Folk Dance Festival in salute to the Bicentennial. One hundred and two groups of over 2000 Lithuanian folk dancers will perform. The attendance is expected to be about 10,000. The Festival is registered with ARBA as the Lithuanian community's principal festivity. Although Mr. Bruno Juodelis is the chairman (312-968-3869), Mr. Adamkus is the contact. Congressman Edward Derwinsky (R-Ill) has also been interested in this event and called to endorse it.

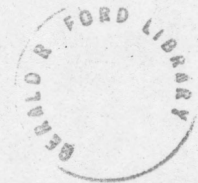


Mrs. Ford will remain in Vail until Saturday afternoon, when she will travel to the Chicago area and overnight. Sunday morning, September 5th, she will attend church at the Shiloh Baptist Church in Waukegan, Illinois. Congressman Robert McClory will also attend, as will the Mayor of Waukegan, Robert Sabonjian.

Her attendance at the Shiloh Baptist Church stems from a conversation the President had directly with Congressman McClory in the early part of this year. At that time the President told Congressman McClory he would strongly recommend that Mrs. Ford accept this invitation if at all possible. Thus, because it is unlikely she will be in Illinois again on a Sunday, this seemed maybe the best opportunity to accept the invitation. Attending the Shiloh Baptist Church is a woman named Mary Lacey who does gospel singing. It is my understanding she will sing during the service. The contact is the minister of the church: Rev. Jonathan Lightfoot (O: 312-662-6325 or 312-668-9361; H: 312-244-6451). I think driving times would be one of my chief concerns about this. The file is attached.

Thank you.

c: BF Staff  
Red Cavaney  
Myron Kuropas  
William Nicholson  
Jerry Jones  
Terry O'Donnell  
Max Friedersdorf  
Steve McConahey  
Rex Scouten  
Staircase





RE: CHURCH  
SUN, 9/5/76

THE WHITE HOUSE  
WASHINGTON

225-5221

PER CONG. McCLORY:

REV. JONATHAN LIGHTFOOT  
SHILOH BAPTIST CHURCH  
WAUKEGAN, ILLINOIS

(312) 662-6325  
OR ONT-9361

H: (312) 244-6451

GOSPEL SINGER: MARY LACEY

MAYOR OF WAUKEGAN  
ROBERT SABONJIAN  
ALSO PRESENT.



THE WHITE HOUSE  
WASHINGTON

*Val  
Adams*

*(312) 353-2000  
H: (312) 737-0638*

*Federal Bldg.  
in Washington*



# THE FIFTH LITHUANIAN FOLK DANCE FESTIVAL COMMEMORATING AMERICA'S BICENTENNIAL Chicago, International Amphitheatre, Sept. 5, 1976

LITHUANIAN FOLK DANCE FESTIVALS, INC.

A NON-PROFIT ILLINOIS CORPORATION

912 Plainfield Rd., Downers Grove, Ill. 60515



EXECUTIVE COMMITTEE:

Bruno P. Juodelis  
Chairman  
912 Plainfield Rd.  
Downers Grove, Ill. 60515  
(312) 968-3869

Selija Dologas  
Vice Chairman  
7240 S. Maryland St.  
Chicago, Ill. 60629  
(312) 975-3452

Stanislo Gubis  
Program Director  
6549 Vernon Ave.  
Dearborn Heights, Mich. 48127  
(313) 563-6200

Anthony Rauch  
Public Director  
5450 N. Lincoln Ave.  
Chicago, Ill. 60630  
(312) 771-5353

Arvids J. J. J.  
Secretary  
5455 S. State St.  
Chicago, Ill. 60629  
(312) 771-5353

Gregory J. J.  
Treasurer  
5215 S. State St.  
Western Springs, Ill. 60591  
(312) 771-5353

Paul J. J.  
Public Director  
7111 Plainfield St.  
Chicago, Ill. 60629  
(312) 771-5353

George J. J.  
General Director  
2111 S. State St.  
Chicago, Ill. 60629  
(312) 771-5353

FUNCTIONAL COMMITTEE:  
Grouping Station  
Lithuanian  
7355 S. Maryland Ave.  
Chicago, Ill. 60629  
(312) 476-2929

Tickets  
Vernon Stiles  
4435 S. Chicago Ave.  
Chicago, Ill. 60629  
(312) 523-7410

Fund Raising  
dr. Donas Gledianis  
395 E. State St.  
St. Elmo, Ill. 60177  
(312) 742-2887

Communication & Media  
dr. Donas J. J.  
2111 S. State St.  
Chicago, Ill. 60629  
(312) 771-5353

February 27, 1976

Honorable Gerald R. Ford  
The President of the United States  
The White House  
Washington, D.C. 20501



SUNDAY, SEPT. 5, 1976

2:00 pm - 4:30

International Amphitheatre  
4300 S. Halsted

1:00  
Receipt in  
adj. Bldg.

- Process. of flags

- Natl. Anthem

- Parade of dancers

- Address by Mrs. Ford (very brief)

- Speeches by Col. Pileys

- Program: dances

Dear Mr. President:

The American-Lithuanian Community in the U.S.A. is sponsoring the Fifth Lithuanian Folk Dance Festival on September 5, 1976, at the International Amphitheatre in Chicago. One hundred and two groups of over 2000 Lithuanian folk dancers from the U.S.A., Canada, Brazil, Venezuela, Germany and Great Britain will perform before an expected audience of 10,000. + 2,000 = 12,000 DANCERS

This Festival will be the major salute to the Bicentennial of the U.S.A. by all American-Lithuanians as an affirmation of their loyalty and love to this great country as well as a demonstration of their cultural heritage. This Festival is registered by the American Revolution Bicentennial Administration, Washington D.C. as our principal Bicentennial festivity in the U.S.A.

It would be a great honor to this Festival and to all Lithuanians in the entire world to have you as Honorary Patron of the Fifth Lithuanian Folk Dance Festival, commemorating America's Bicentennial.

Your kind consideration will be deeply appreciated by all Lithuanians.

Very respectfully yours,

*Bruno P. Juodelis*

Bruno P. Juodelis, Chairman

(312) 968-3869

Banquet:	Hospitality:	Publications:	Reception:	Floor Supervision:	First Aid:	Information:
Marija Remys 3020 So. Harlem Ave. Riverside, Ill. 60546 (312) 417-0598	Stase Bacevicius 6455 So. Kedzie Ave. Chicago, Ill. 60629 (312) 434-7045	Donute Bindokas 6634 So. Richmond Ave. Chicago, Ill. 60629 (312) 975-3850	Vytautas Kamantar 1110 the 69 St Darien, Ill. 60559 (312) 968-7593	Jonas Paronis 6219 So. Whipple St. Chicago, Ill. 60629 (312) 737-2261	dr. Romas Povilaitis 1140 the 118 St. Lemont, Ill. 60439 (312) 257-7352	Anthony Rauch 8046 W. 93rd St. Hickory Hills, Ill. 60141 (312) 594-74





LITHUANIAN-AMERICAN COMMUNITY of the U. S. A., Inc.

NATIONAL EXECUTIVE COMMITTEE

1004 ROBINSON BUILDING - 42 SOUTH 15TH STREET  
PHILADELPHIA, PENNSYLVANIA 19102

215 - 568-1587

Please reply to:

April 23, 1976

V. F. VOLERTAS  
President

J. J. GAILA  
Vice President

S. A. GECYS  
Vice President

V. GRUZDYS  
Vice President

A. W. NOVASITIS, Esq.  
Vice President

A. VASKELIS  
Vice President

S. M. JURSKIS, (Miss)  
Secretary

P. LITALAS  
Treasurer

A. M. ZERR, (Mrs.)  
Activities Director

V. V. MACIUNAS  
Administrator

A. KAIRYS  
Chairman -  
Cultural Fund

J. KAVALIUNAS  
Chairman -  
Board of Education

Dr. Myron Kuropas  
Special Asst. to the President  
for Ethnic Groups  
The White House  
Washington, D.C. 20500

Re: Fifth Lithuanian Folk  
Dance Festival  
Chicago Amphitheater  
September 5, 1976

Dear Myron:

I am supplying the information you requested as a result of our telephone discussion in connection with the Lithuanian Folk Dance Festival commemorating America's Bicentennial to be held September 5, 1976 at the Chicago International Amphitheater.

You indicated you will do your utmost to fulfill our organization's request to have Mrs. Betty Ford, wife of our President and/or their daughter, Susan to participate at the dance festival. As in the past, the amphitheater will be sold out with standing room only. Four years ago, there was national press coverage. The appearance of Mrs. Ford or her daughter will materially aid our common cause.

The Chairman of the Reception immediately prior to the Festival is Vytautas Kamantas, 1110 69th Street, Darien, Illinois 60559, Telephone No. 312-968-7598 who is the local contact for your office. You can obtain details from him in connection with the affair and Reception.

As indicated to you, this organization is sponsoring the Dance Festival through a separate non-profit community



Dr. Myron Kuropas

April 23, 1976

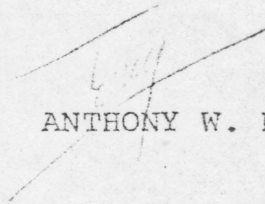
- 2 -

organization known as the Lithuanian Folk Dance Festivals, Inc. whose principal address is 912 Plainfield Road, Downers Grove, Illinois 60515.

The organization was created to maintain the continuity and permanency of the Festivals. However, we are the responsible organization.

Your assistance in this regard would be sincerely appreciated. Please forward copies of correspondence in this connection to me for my file.

Sincerely yours,

  
ANTHONY W. NOVASITIS, JR.

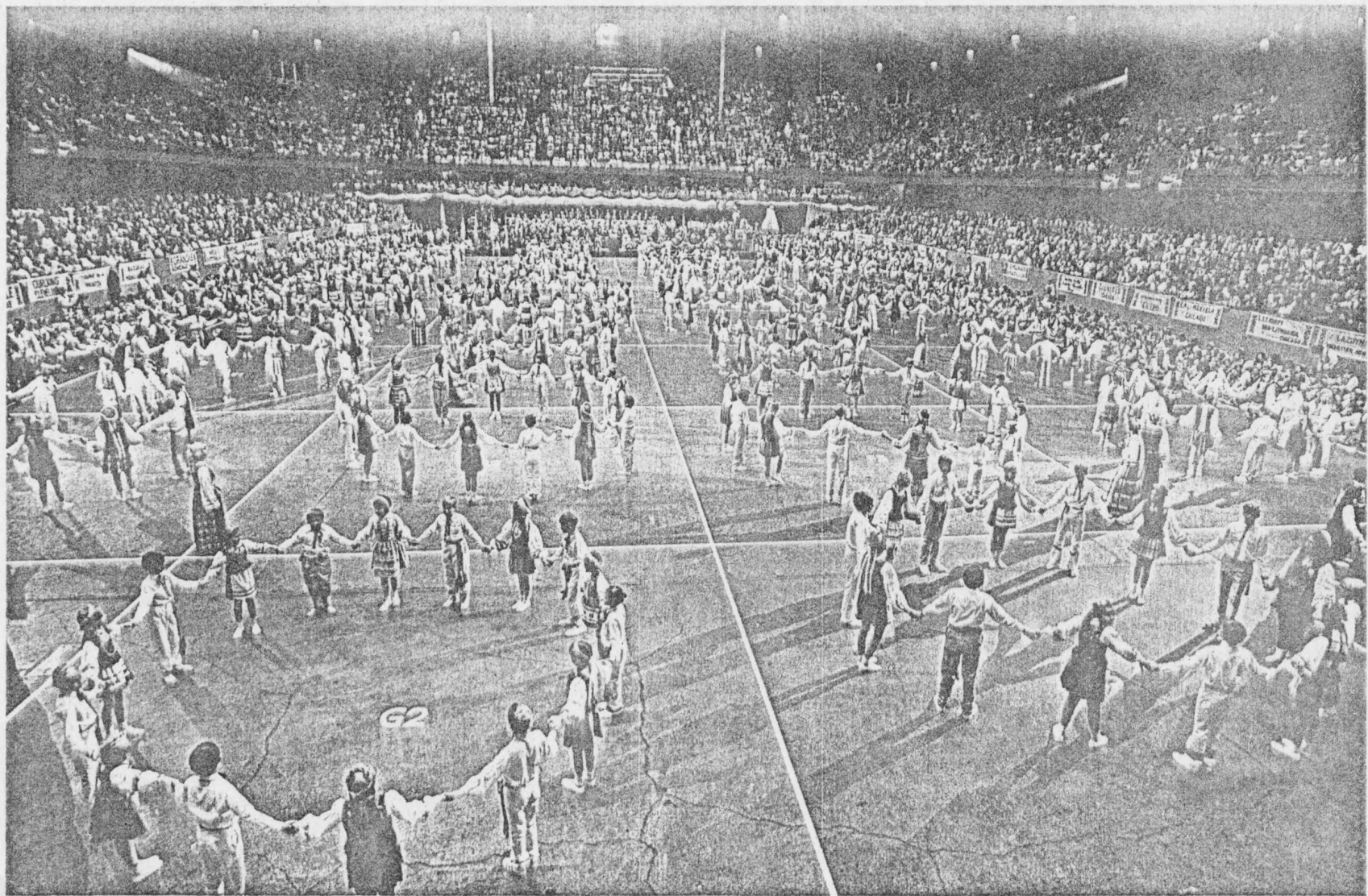
AWNjr/lg

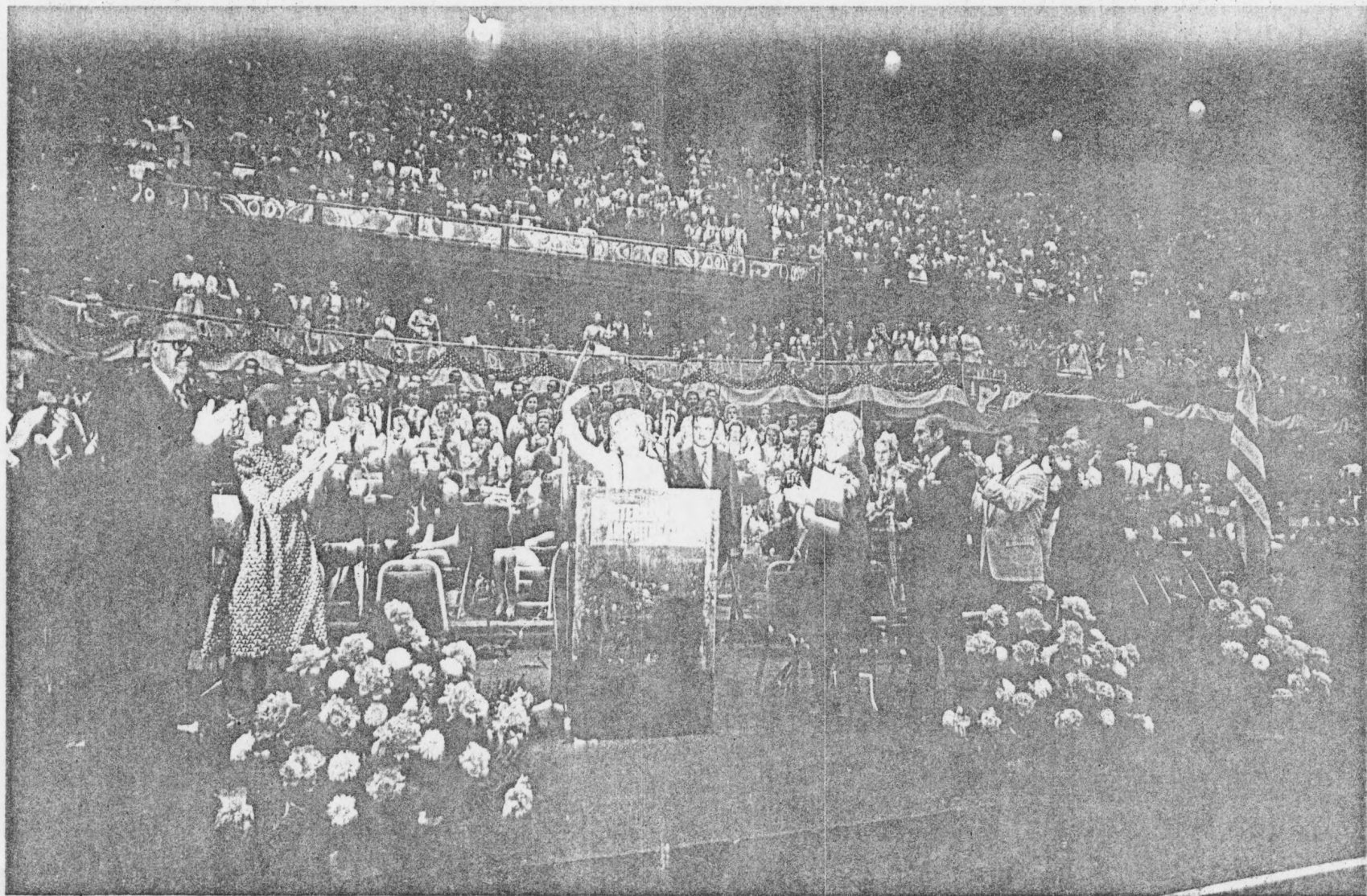
cc: Mr. Vytautas Kamantas  
Mr. Joseph Gaila











BERLIN  
JAN 1951





GERALD R. FORD LIBRARY



For immediate release  
Tuesday, Aug 31 1976

THE WHITE HOUSE  
Office of the Press Secretary to Mrs. Ford

---

Mrs. Ford will open the Fifth Lithuanian Folk Dance Festival in Chicago Sept 5. The Festival will be held at the International Ampitheatre Sunday at 2 p m

About 12,000 people are expected for the dance festival, which features 2,000 Lithuanian folk dancers from the United States, Canada, Brazil, Venezuela, Germany and Great Britain. The Festival has been held every four years in the United States.

This year the event is a special tribute to the American Bicentennial by American Lithuanians. The Festival is registered by the American Revolution Bicentennial Administration.

# # # #

press contact: Frank Corrado (312) 353 2072



9/15-16/76 Ann Arbor  
Campaign Kickoff, West-  
ern Elec. Assembly Plt.



9/14/76  
3:00 p.m.

PROPOSED SCHEDULE

MRS. FORD'S TRIP TO MICHIGAN AND OHIO

WEDNESDAY, SEPTEMBER 15, 1976

- 8:35 p.m. Mrs. Ford bids farewell to President and proceeds to motorcade for boarding.
- 8:40 p.m. MOTORCADE DEPARTS Chrysler Arena, Ann Arbor, Mich., enroute Michigan State University, East Lansing, Mich.

(Driving time: 1 hour, 5 minutes)

Motorcade assignments as follows:

Lead	P. Sorum
Mrs. Ford's car	Mrs. Ford
Follow-up:	
Staff van	N. Chirdon
	S. Weidenfeld
	K. Schumacher
	G. Herrell

- 9:45 p.m. MOTORCADE ARRIVES Michigan State University, (Cowles House)

Mrs. Ford will be met by:

Mrs. Clifton Wharton, Jr. (Delores), wife  
of Pres. of Mich. St. Univ.

OPEN PRESS COVERAGE

Mrs. Ford escorted by Mrs. Wharton, proceeds into Cowles house to remain overnight.

NOTE: N. Chirdon and G. Herrell will remain at Cowles house.

S. Weidenfeld, K. Schumacher, P. Sorum., P. Matson and N. Stahl will proceed to Univ. Inn via assigned transportation available at Cowles house.

Room assignments as follows:

S. Weidenfeld	906	P. Sorum	138
K. Schumacher	239	P. Matson	136
N. Stahl	240		

OVERNIGHT





THURSDAY, SEPTEMBER 16, 1976

10:30 a.m. Mrs. Ford and Mrs. Wharton depart Cowles House enroute motorcade for boarding.

MOTORCADE DEPARTS Cowles House enroute Kresge Art Center.

(Driving time: 5 minutes)

10:35 a.m. MOTORCADE ARRIVES Kresge Art Center.

Mrs. Ford will be met by:

Mrs. William G. Milliken (Helen), wife of Governor of Michigan.

Mrs. Ford, escorted by Mrs. Wharton and Mrs. Milliken, proceed to Kresge Art Center Gallery to view Michigan Folklore Exhibit.

11:00 a.m. Mrs. Ford, escorted by Mrs. Wharton and Mrs. Milliken, departs Gallery into motorcade for boarding.

NOTE: Mrs. Wharton will bid farewell curbside.

11:05 a.m. MOTORCADE DEPARTS Kresge Art Center enroute Republican Campaign Phone Center.

(Driving time: 10 minutes)

11:15 a.m. MOTORCADE ARRIVES Republican Campaign Phone Center.  
(404 E. Michigan Avenue, Lansing, Michigan)

Mrs. Ford will be met by:

Lt. Gov., James Daman  
The Hon. Gerald Graves, Mayor of Lansing  
The Hon. Lucile Belen, Mayor Pro-Temp  
of Lansing  
Mrs. Ranny Reicker, Republican National  
Committeewoman  
Mrs. Nancy Chase, Michigan Republican  
Vice Chairman  
Mrs. Olga Esch, wife of Senatorial  
Candidate, Marvin Esch  
Mr. Cliff Taylor, Candidate for Congress  
6th District

Continued ...



Thursday, September 16 - continued

11:15 a.m.

Mrs. Julie Abraham, 6th District  
Republican Chairman  
Mrs. Kitty Goodman, Michigan Phone  
Center Chairman  
Mr. Paul Stearns, Ingham County  
Chairman  
Mrs. D. Kinzel, Ingham County Vice  
Chairman  
Mr. Bill McKay, Ingham County Ford  
Chairman.

OPEN PRESS COVERAGE

*Ceremony now outside*

11:25 a.m. Mrs. Ford, escorted by Mrs. Abraham, proceed into  
Phone Center to greet local candidates and volunteers.

Program: 11:35 - Introduction of Guests by  
Mr. Stearns  
11:38 - Remarks by Mr. Taylor  
11:41 - Remarks by Mrs. Esch  
concluding with introduction  
of Mrs. Ford  
11:43 - Mrs. Ford's remarks

FULL PRESS COVERAGE

11:45 - Remarks conclude  
11:46 - Mrs. Ford will be invited  
to make random phone calls  
to local citizens.

11:55 a.m. Mrs. Ford bids farewell and departs Phone Center enroute  
motorcade for boarding.

12:00 Noon MOTORCADE DEPARTS Phone Center enroute Capitol City  
Airport.

(Driving time: 10 minutes)

12:10 p.m. MOTORCADE ARRIVES Capitol City Airport.

Mrs. Ford boards C-9.

Manifest as follows:

N. Chirdon	S. Weidenfeld
K. Schumacher	P. Sorum
P. Matson	F. Dominico
F. Lawrence	A. Dalton
N. Stahl	USSS



Thursday, September 16 -continued

12:15 p.m. C-9 DEPARTS Capitol City Airport enroute Port  
Columbus International Airport, Columbus, Ohio.

(Flying time: 45 minutes)  
Lunch will be served on board.

1:00 p.m. C-9 ARRIVES Port Columbus International Airport,  
General Aviation Ramp.

Mrs. Ford will be met by:

Governor James A. Rhodes

Mrs. Kit McGough, wife of Republican State  
Chairman

Mrs. Tom Moody, wife of Mayor

Mrs. Chalmers Wyley (Marjorie), wife of  
Cong. Wyley

Mrs. Sam Devine (Betty), wife of Cong. Devine  
Senator Bricker (former Ohio Senator)

Mr. Keith McNamara, State Ford Chairman

Mr. Tim Bainbridge, County Ford Chairman

Mr. Russ Leach, Republican Franklin County  
Chairman.

Mrs. Ford, escorted by Gov. Rhodes, proceeds to  
motorcade for boarding.

1:15 p.m. MOTORCADE DEPARTS Port Columbus International Airport  
enroute Western Electric Assembly Plant.

NOTE: Motorcade as on arrival except for  
Gov. Rhodes to Mrs. Ford's car.

(Driving time: 15 minutes)





Thursday, September 16 - continued

1:30 p.m. MOTORCADE ARRIVES Western Electric Assembly Plant.

Mrs. Ford will be met by:

Mr. Charles Vath, Plant General Mngr.  
Mr. Charles Biggrigg, President,  
IBEW Local 2020

Mr. Stanley Brown, President, United  
Plant Guard Workers of America,  
Local 124

and a Bell Labs. Representative.

Mrs. Ford and Governor Rhodes, escorted by Mr. Vath,  
and Mr. Biggrigg, proceed on walking tour of plant  
assembly area.

NOTE: Mrs. Ford will have an opportunity to greet  
workers and observe plant operations.

2:15 p.m. Mrs. Ford concludes tour and proceeds to motorcade  
for boarding.

2:20 p.m. MOTORCADE DEPARTS Western Electric Plant enroute  
Port Columbus International Airport.

(Driving time: 15 minutes)

2:35 p.m. MOTORCADE ARRIVES Port Columbus International Airport.  
Mrs. Ford boards C-9.

2:45 p.m. C-9 DEPARTS Port Columbus International Airport  
enroute Andrews Air Force Base.

(Flying time: 55 minutes)

3:40 p.m. C-9 ARRIVES Andrews Air Force Base.  
Mrs. Ford boards motorcade.

3:50 p.m. MOTORCADE DEPARTS Andrews Air Force Base enroute  
South Grounds.

(Driving time: 25 minutes)

4:15 p.m. MOTORCADE ARRIVES South Grounds.




THE WHITE HOUSE

WASHINGTON

VISIT TO THE UNIVERSITY OF MICHIGAN  
ANN ARBOR, MICHIGAN


WEDNESDAY - SEPTEMBER 15, 1976

FROM: TERRY O'DONNELL 

Departure: 1:30 P.M.

BACKGROUND

Since you are so thoroughly familiar with the University of Michigan, no background is provided. However, for your convenience, following is a summary schedule of today's Michigan trip:

- 1:30 p.m. You and Mrs. Ford depart South Grounds via helicopter to Andrews AFB for the 1 hour, 10 min. flight to Ypsilanti, Michigan.
- 3:00 p.m. Arrive Willow Run Airport, Ypsilanti, Michigan. You will be met by: Bill McLaughlin, State GOP Chairman; Peter Fletcher, State PFC Chairman and GOP National Committee; Mrs. John Reicker, GOP National Committeewoman and several others.
- 3:05 p.m. You board motorcade for 15-minute drive to University of Michigan.
- 3:20 p.m. Arrive Crisler Arena. You and Mrs. Ford proceed inside to Michigan Lounge for Student Seminar with 20 students. (Mrs. Ford departs after 10 minutes for Inglis House.)
- 4:00 p.m. You depart Crisler Arena for Inglis House. PERSONAL TIME: 2 hours.
- 6:20 p.m. Proceed via motorcade to Michigan Union for Football Training Table. (NOTE: Prior to being seated, you will pass through food line.)
-  7:05 p.m. Proceed to Crisler Arena where Mrs. Ford will join you in Holding Room.

7:30 p.m.	<u>University of Michigan Address.</u>
8:15 p.m.	<u>University Reception</u> - Michigan Lounge (50 guests in attendance).
8:40 p.m.	Depart Reception and proceed to Willow Run Airport.
9:10 p.m.	Air Force One departs en route Andrews.
10:20 p.m.	Arrive Andrews AFB.
10:40 p.m.	Arrive South Grounds.





SEQUENCEWASHINGTON DEPARTURE/YPSILANTI, MICHIGAN ARRIVAL

1:30 p.m. You and Mrs. Ford board helicopter on  
EDT the South Lawn and depart en route  
Andrews AFB.

1:45 p.m. Helicopter arrives Andrews AFB.

1:50 p.m. You and Mrs. Ford board Air Force One  
and depart en route to Willow Run Air-  
port, Ypsilanti, Michigan.

(Flying time: 1 hour, 10 minutes)

3:00 p.m. Air Force One arrives Willow Run Airport,  
EDT Ypsilanti, Michigan.

Advanceman:  
F. Ursomarso

CLOSED ARRIVAL  
OPEN PRESS COVERAGE

You and Mrs. Ford will be met by:

Mr. Bill McLaughlin, State GOP Chairman  
Mr. Peter Fletcher, State PFC Chairman and  
GOP National Committeeman  
Mrs. John Reicker, GOP National Committeewoman  
Ms. Nancy Chase, First District GOP  
Vice Chairman  
Dr. and Mrs. Richard Robb, Eastern Michigan  
University Regents Chairman  
Mr. and Mrs. George Griffith, General Motors  
Hydromatic Division Vice President

You and Mrs. Ford proceed to motorcade  
for boarding.

3:05 p.m. Motorcade departs Willow Run Airport  
en route Crisler Arena, University of  
Michigan, Ann Arbor.

(Driving time: 15 minutes)

3:20 p.m. Motorcade arrives Crisler Arena (Tunnel  
Entrance), University of Michigan Campus.

CLOSED ARRIVAL  
PRESS POOL COVERAGE



You and Mrs. Ford will be met by:

President and Mrs. Robben Flemming  
Miss C. C. Leslie, President of the  
campus "Students for President Ford"  
Committee

Mr. Calvin Luker, Student Body President

You and Mrs. Ford proceed inside Crisler  
Arena en route Michigan Lounge, escorted  
by the aforementioned greeters.

UNIVERSITY OF MICHIGAN - STUDENT SEMINAR

3:25 p.m.

You and Mrs. Ford arrive Michigan Lounge  
and informally greet students at Student  
Seminar.

PRESS POOL COVERAGE  
ATTENDANCE: 20

*Frank will cue you on  
your movement*

3:30 p.m.

Mrs. Ford bids adieu to the students  
after the greeting and proceeds via  
motorcade to Inglis House.

3:30 p.m.

You ask the students to be seated and  
invite student discussion.

4:00 p.m.

You thank students for their participation  
and proceed en route motorcade for boarding.

4:15 p.m.

Motorcade departs Crisler Arena en route  
Inglis House (University of Michigan Guest  
Residence).

4:20 p.m.

Motorcade arrives Inglis House.

PRESS POOL COVERAGE  
CLOSED ARRIVAL

You will be met by:

Mrs. Sandy Sims, Inglis House Manager.

You proceed inside Inglis House.

PERSONAL TIME: 2 hours.



UNIVERSITY OF MICHIGAN - FOOTBALL TRAINING TABLE

6:20 p.m.                      You depart Inglis House and proceed en route motorcade for boarding.

Motorcade departs Inglis House en route Michigan Union.

(Driving time: 5 minutes)

6:25 p.m.                      Motorcade arrives Michigan Union.

CLOSED ARRIVAL  
PRESS POOL COVERAGE

You will be met by:

Mr. Don Canham, Michigan Athletic Director  
Mr. Bo Schembechler, Michigan Football Coach

Escorted by the aforementioned, you proceed to Football Training Table.

6:30 p.m.                      You arrive Training Table and take your seat with the team.

PRESS POOL COVERAGE  
ATTENDANCE: 75

NOTE: Prior to being seated, you will pass through the food line.

6:55 p.m.                      You thank the team and proceed en route motorcade for boarding.

7:00 p.m.                      Motorcade departs Michigan Union en route Crisler Arena.

7:05 p.m.                      Motorcade arrives Crisler Arena (Stadium Entrance).

CLOSED ARRIVAL  
PRESS POOL COVERAGE

You will be met by:

Mr. Robben Flemming, University of Michigan President

Escorted by President Flemming, you proceed en route Holding Room.





7:10 p.m. Mrs. Ford's motorcade departs Inglis House en route Crisler Arena.

7:10 p.m. You arrive Holding Room and take your leave of President Flemming.

PERSONAL TIME: 18 minutes

7:15 p.m. Mrs. Ford's motorcade arrives Crisler Arena. She joins you in Holding Room.

UNIVERSITY OF MICHIGAN ADDRESS

7:28 p.m. You and Mrs. Ford depart Holding Room en route offstage announcement area.

~~Important hand rail!~~

7:29 p.m. You and Mrs. Ford arrive offstage announcement area for a brief pause.

7:30 p.m. "Ruffles and Flourishes"  
Announcement  
"Hail to the Chief"

7:30 p.m. *Important hand rail! to use* You and Mrs. Ford enter the arena proper and descend the steps to the floor of the arena en route platform.

OPEN PRESS COVERAGE  
CROWD SITUATION

7:35 p.m. You and Mrs. Ford arrive platform and are seated.

7:37 p.m. Introduction of you by Robben Flemming, University of Michigan President.

7:38 p.m. PRESIDENTIAL REMARKS.

FULL PRESS COVERAGE

7:55 p.m. Remarks conclude. You remain at the podium.



7:57 p.m. The Master of Ceremonies steps to the podium, thanks you and presents you with a "Michigan 1" windbreaker.

7:58 p.m. Musical Medley.

8:00 p.m. You and Mrs. Ford, escorted by President Flemming, depart platform en route Holding Room.

8:10 p.m. You and Mrs. Ford arrive Holding Room.

PERSONAL TIME: 5 minutes

#### UNIVERSITY RECEPTION

8:15 p.m. You and Mrs. Ford depart Holding Room en route Michigan Lounge for University Reception.

8:20 p.m. You and Mrs. Ford arrive Michigan Lounge and informally greet guests at University Reception.

PRESS POOL COVERAGE  
ATTENDANCE: 50

8:40 p.m. You and Mrs. Ford depart Michigan Lounge en route motorcade for boarding.

NOTE: You will bid farewell to Mrs. Ford prior to motorcade boarding.

8:50 p.m. Motorcade departs Crisler Arena en route Willow Run Airport.

(Driving time: 15 minutes)

9:05 p.m. Motorcade arrives Willow Run Airport, Ypsilanti.

9:10 p.m. You board Air Force One and depart Willow Run Airport en route Andrews AFB.

(Flying time: 1 hour, 10 minutes)

10:20 p.m. Air Force One arrives Andrews AFB.  
EDT



10:25 p.m.

You board helicopter and depart Andrews  
AFB en route South Lawn.

(Flying time: 15 minutes)

10:40 p.m.

Arrive South Lawn.





## OHIO BACKGROUNDER

Columbus is an urban Republican stronghold. It is also Ohio's fastest-growing metropolitan area. (Barry Goldwater made his best Ohio showing in Columbus.) The city does have an 18 percent black population, but few ethnics from Eastern and Southern Europe. Columbus is, of course, the capital and home of Ohio State University.

Columbus is represented by two Republicans, Sam Devine from the 12th District and Chalmers Wylie from the 15th. Despite careful redistricting by the Republican state legislature, Devine is believed to be in serious political trouble. He narrowly won in 1974 over City Councilwoman Fran Ryan, who is his opponent again this year. Wylie is expected to win his race.

Patti does not think either Devine or Wylie will tour the Western Electric Plant with you, although Governor Rhodes will. Rhodes, a former Mayor of Columbus, will be governor until 1979.

### Senate Race:

Incumbent Republican Senator Robert Taft is seeking a second term. His opponent is Howard Metzenbaum, who was defeated by John Glenn in the 1974 Democratic primary.

Apparently there is no love lost between Glenn, Metzenbaum and former Governor John Gilligan. Rhodes defeated Gilligan



in 1974, when it was assumed that if Gilligan had won he would have been a bright and shining star in national Democratic politics. Gilligan appointed Metzenbaum in 1973 to fill William Saxbe's seat, because Metzenbaum ran a strong race against Taft in 1970. All this tangled web of infighting makes the picture better for Taft, although the Republican Senatorial Committee says Taft is having some problems raising money. Metzenbaum is wealthy and has been lavish in his past campaign spending.



Michigan, Page Two

Taylor is married and in his mid-30s. (Patti was not impressed by him, and she reports Michigan contacts are not optimistic about his chances.)

Senate Race:

I know you must be especially interested in the Ecsh-Riegle Senate race. (Riegle was elected to Congress in 1966 as a Republican and changed his affiliation to Democrat in 1973.)

The Republican Senatorial Committee describes it as a very tight race. Patti reports from Michigan that one recent poll showed Riegle substantially ahead (47 percent to 25 percent). But Riegle himself was down that much in the primary fight he won.

This is, of course, Phil Hart's seat. I'm sure you know most of this Michigan material, but I thought a few facts on paper might be helpful.





## MICHIGAN BACKGROUNDER

Lansing, population 130,000, is the largest city in the 6th Congressional District, which also includes East Lansing and Jackson. (Lansing has a large Oldsmobile plant, which, of course, would not be directly affected if the United Auto Workers strike Ford tonight (9/14).)

From 1956 to 1974, the 6th District incumbent was Republican Charles Chamberlain. After a narrow win in 1972, he retired in 1974. The seat was won by liberal Democrat Bob Carr, a 29-year-old lawyer. Carr defeated Republican Cliff Taylor by only 647 votes.

This year, Taylor, a trial lawyer, is again the GOP nominee. The Republican Congressional Committee describes this as one of the five best possibilities of unseating a Democratic incumbent. Carr has been targeted for defeat by all the major conservative and business groups.

Taylor, who was raised in Flint, is considered an excellent candidate by the RCC. He graduated from the University of Michigan and George Washington Law School. He served three years in the Navy. He also has served as Assistant Prosecuting Attorney in Ingham County, which includes Lansing and East Lansing, and as an attorney with the Michigan legislature.



Program at Ingham County Phone Bank in Lansing .

Paul Starns, Ingham County Chairman, will begin the program and introduce Cliff Taylor, 6th Congressional District candidate. Taylor will be followed by Olga Esch, who will introduce you. After your remarks, you will make a few phone calls.

The program will take place in a room where volunteers are at work on the phones.

-0-



BACKGROUND: Dr. and Mrs. Clifton R. Wharton, Jr.

Mrs. Clifton R. Wharton, Jr. (Dolores) is an author and advocate of the arts. She is a former student of Martha Graham, a director of the Museum of Modern Art in New York, the Detroit Symphony Orchestra and the Founder's Society, Detroit Institute of Art. She is also a director of the Kellogg Company, Michigan Bell Telephone Company, and the Michigan National Bank (Lansing).

President Ford appointed Mrs. Wharton to the National Council for the Arts on September 3, 1974. She will be leaving for Atlanta after your visit Thursday for a meeting of the Council with Nancy Hanks. The Wharton's resided in Malaysia from 1958 to 1964. Mrs. Wharton is the author of a book published in 1972: Contemporary Artists of Malaysia: Biographic Survey.

Dr. Wharton is unable to be in Lansing Wednesday night. He is taking their son Bruce to school in Deerfield, Mass. and will be attending an Equitable Life Board of Directors meeting in New York. He has been president of Michigan State University since January 2, 1970. An economist, Dr. Wharton is a leading specialist in economic development, higher education, and U.S. Foreign Policy. He received a B.A. in history from Harvard in 1947. He was the first black to be admitted to Johns Hopkins University School of Advanced International Studies, receiving his M.A. in international studies in 1948. He also has an M.A. in economics from the University of Chicago where he received his Ph.D. in 1958.

The Wharton's have two sons, Clifton III and Bruce.





9/25-26/76 La. SS  
Natchez Miss. River  
Ferry, Milw. Oktober-  
fest. 1976



THE WHITE HOUSE

WASHINGTON

THE PRESIDENT'S SOUTHERN SWING

SATURDAY, SEPTEMBER 25 - MONDAY, SEPTEMBER 27, 1976

SATURDAY - SEPTEMBER 25, 1976

DAY # 1

Departure: 6:50 A.M.

From: Terry O'Donnell

BACKGROUND

You and Mrs. Ford are scheduled to depart the South Lawn via helicopter at 6:50 a.m. en route Andrews Air Force Base and the 2 hour, 20 minute flight aboard Air Force One to New Orleans International Airport, Kenner, Louisiana. (Time Change: -1 hour) Presidential guests aboard will be: Senator Strom Thurmond (R-S.C.), Secretary William Simon, Secretary Earl Butz, Under Secretary Jerry Thomas, Mary Louise Smith, Alan Greenspan, Paul O'Neill and Rogers Morton.

Upon arrival at the New Orleans Airport in Kenner at 8:30 a.m. CDT, you will be greeted by Rep. Edward Hebert, (D-La.), Lt. Governor James Fitzmorris, (D-La.), Rep. and Mrs. David Treen, (R-La.), and Rep. and Mrs. Hanson Moore, (R-La.) following which you will board your car and depart for Lutchet-Vacherie Ferry Landing (50 minutes away). The airport arrival will be carried on LIVE LOCAL TELEVISION.

LUTCHER-VACHERIE FERRY LANDING

On reaching the Lutchet-Vacherie Ferry Landing, and after greeting Mr. Val Amato, Mayor of Lutchet and other city officials, you proceed down the path to board the SS NATCHEZ where you will be met by Captain Doc Hawley, NATCHEZ Captain and Mr. William Dow, NATCHEZ OWNER who then escort you to the upper deck microphone area where you deliver brief remarks before getting underway for the first of three legs of your cruise down the Mississippi River. Rep. Moore will introduce you for brief remarks.



The SS NATCHEZ is a 270-foot steam reproduction of the typical steam sternwheelers that travelled the Mississippi and other great mid-western rivers during the last century. As an annual event, the NATCHEZ races the Delta Queen, with the NATCHEZ having won two consecutive times. The winner's trophy of elk antlers is placed on the pilot's house. The calliope will be playing "Hail to the Chief".

Approximately 500 people are expected to accompany you on the SS NATCHEZ. These include Administration spokesmen, local and national working press, southern editors and publishers, southern political leaders, and special guests. The tenor of the underway time is one of relaxation and conversation. Attire for the boat trip is casual. It is expected that you will spend time with each of the aforementioned groups during the course of the cruise.

Lutcher is located at the mid-point on the Mississippi River between Baton Rouge and New Orleans. There will be two other ferryboat landing sites at Reserve and Destrehan. These towns are extremely small with the economic base centered around the production of sugarcane.

Once underway from Lutcher to Reserve, you will be conducted on a tour of the NATCHEZ by Capt. Hawley. The tour, for photographic coverage, will include visits to the Engine Room, Paddle Wheel Area, Boiler Room, Bow Area, Grand Staircase, Dining Area, and Pilot House.

#### RESERVE FERRY LANDING

The NATCHEZ arrives at the Reserve Ferry Landing at 11:10 a.m. You and Mrs. Ford and Rep. and Mrs. Moore proceed to the upper deck and after an introduction by Rep. Moore you deliver brief remarks and move onto the ferry landing and levee to greet the crowd. During the greeting you will be presented the keys to the cities of Reserve and LaPlace and Mrs. Ford will be given a bouquet of flowers. After spending thirty minutes greeting the crowd, you return onboard and the NATCHEZ gets underway for the Destrehan Ferry Landing. (Cruising Time: 1 hour, 45 minutes.)





### DESTREHAN FERRY LANDING

The NATCHEZ arrives at the Destrehan Ferry Landing at 1:45 p.m. and you and Mrs. Ford and Congressman and Mrs. Treen move to the second level microphone area where the Congressman introduces you for remarks. You then descend from the upper deck of the boat, greet the public on the landing and levee, then return onboard and bid farewell.

The THIRD LEG of the cruise from DESTREHAN FERRY LANDING to THE TOULOUSE STREET WHARF at Jackson Square, New Orleans, requires 2 hours, 45 minutes cruising time.

The NATCHEZ is scheduled to tie up at the Toulouse Street Wharf at 5:15 p.m. The arrival will be carried on POSSIBLE LIVE NATIONWIDE TELEVISION. After offering remarks from the upper deck, you and Mrs. Ford proceed onto the wharf for the motorcade, greeting the crowd along the way. You arrive in your Suite at the Hyatt Regency Hotel at 6:00 p.m. and have 1 hour, 50 minutes personal time before departing at 7:50 p.m. for a local restaurant. Your guests at tonight's private dinner will be: Rep. and Mrs. Hebert, Rep. and Mrs. Treen, and Rep. and Mrs. Moore.

It is anticipated that you will be back in your Suite by 10:25 p.m.

### NEW ORLEANS

Nicknamed "Crescent City."

You were last there on April 23, 1975 for a groundbreaking ceremony for a Library at Tulane University.

Home of the Super Dome -- world's largest enclosed sports arena.

Unemployment is high (8.6%) due to phasing out of space program.

Main economic bases: Port of New Orleans - shipping, trade and tourism.

City takes particular pride in Mardi Gras.



SEQUENCE

SATURDAY, SEPTEMBER 25, 1976

WASHINGTON DEPARTURE/KENNER, LOUISIANA ARRIVAL

6:50 a.m.                      You and Mrs. Ford board helicopter on the South  
EDT                              Lawn and depart en route Andrews AFB.

7:05 a.m.                      Helicopter arrives Andrews AFB and you and  
Mrs. Ford board Air Force One.

7:10 a.m.                      Air Force One departs Andrews AFB en route  
New Orleans International Airport, Kenner,  
Louisiana.

(Flying time: 2 hours, 20 minutes)

(Time change: -1 hour)

8:30 a.m.                      Air Force One arrives New Orleans International  
CDT                              Airport, Kenner, Louisiana.

LIVE LOCAL TELEVISION  
CLOSED ARRIVAL

You and Mrs. Ford will be met by:

Rep. Edward Hebert, (D-La.)

Rep. and Mrs. David Treen, (R-La.)

Rep. and Mrs. Hanson Moore, (R-La.)

Lt. Governor William Fitzmorris, (D-La.)

You and Mrs. Ford board motorcade.

8:35 a.m.                      Motorcade departs New Orleans International Airport  
en route Lutchet-Vacherie Ferry Landing.

(Driving time: 50 minutes)

9:25 a.m.                      Motorcade arrives Lutchet-Vacherie Ferry Landing,  
Lutcher, Louisiana.

OPEN PRESS COVERAGE  
CROWD SITUATION



"Ruffles and Flourishes"  
Announcement  
"Hail to the Chief"

You and Mrs. Ford will be met by:

Mr. Val Amato, Mayor of Litcher  
Mr. Paul Keller, St. James' Police Jury President  
Mr. Gordon Martin, St. James' Parish Sheriff  
Mr. Edmond Kinler, St. James' Parish Clerk  
of the Court  
Mr. Riley Boudreaux, St. James' Parish School  
Board President  
Mr. Joseph Acardo, Louisiana State Representative

You and Mrs. Ford exit your vehicle at the top of  
the levee and proceed down the path to board  
SS NATCHEZ.

You and Mrs. Ford will be met by:

Captain Doc Hawley, SS NATCHEZ Captain  
Mr. William Dow, SS NATCHEZ Owner  
Mr. Bob Huenemann, New Orleans Steamship  
Lines Sales Manager

NOTE: Following the greeting, Capt. Hawley  
will escort you and Mrs. Ford to the second  
level deck.

9:50 a.m.

You and Mrs. Ford arrive second level (midships)  
microphone area, where you offer brief remarks  
after being introduced by Rep. Moore.

#### FULL PRESS COVERAGE

10:00 a.m.

Remarks conclude.

You and Mrs. Ford proceed to the second deck  
aft section and bid farewell to the crowd at the ferry  
landing as SS NATCHEZ gets underway en route the  
Reserve Ferry Landing.

(Cruising time: 1 hour, 10 minutes)





10:10 a.m. You and Mrs. Ford will be conducted on a tour of SS NATCHEZ by Capt. Hawley. The tour, for photographic coverage, will include visits to the following areas: Engine Room, Paddle Wheel Area, Boiler Room, Bow Area, Grand Staircase, Dining Area, and the Pilot House.

#### PRESS POOL COVERAGE

10:40 a.m. The Captain will escort you and Mrs. Ford to your Quarters at the conclusion of the tour.

10:45 a.m. You and Mrs. Ford arrive Quarters.

10:45 a.m. Meeting with Southern Civic, Business and Political leaders from selected states.

to

11:10 a.m. NOTE: Would include representatives from Alabama, Arkansas, Florida, Georgia, Kentucky and Louisiana.

#### RESERVE FERRY LANDING

11:10 a.m. You and Mrs. Ford arrive second level (midships) microphone area as SS NATCHEZ ties up alongside the Reserve Ferry Landing.

#### OPEN PRESS COVERAGE CROWD SITUATION

11:14 a.m. Introduction by Rep. Moore.

11:15 a.m. PRESIDENTIAL REMARKS

#### FULL PRESS COVERAGE

11:20 a.m. Remarks conclude.

You and Mrs. Ford depart second level and proceed onto the ferry landing and levee to greet the crowd.

#### OPEN PRESS COVERAGE CROWD SITUATION



You and Mrs. Ford will be met by:

Mr. Brent Tregre, St. John's Parish Police  
Jury President

Mr. Lloyd B. Johnson, St. John's Parish Sheriff

Mr. Calvin Perilloux, GOP State Committee

Mr. Dale Wolf, St. John's Parish Police Jury  
Vice President

NOTE: During the greeting, you will be presented the keys to the cities of Reserve and LaPlace. Mrs. Ford will be given a bouquet of flowers.

OPEN PRESS COVERAGE

11:50 a.m. You and Mrs. Ford return onboard SS NATCHEZ and proceed to the upper deck.

12:00 noon You and Mrs. Ford arrive upper deck microphone area and bid farewell to the crowd at the ferry landing as SS NATCHEZ gets underway for the Destrehan Ferry Landing.

(Cruising time: 1 hour, 45 minutes)

12:05 p.m. Meeting with Southern Civic, Business and Political leaders from selected states.

to

12:30 p.m. NOTE: Would include representatives from Mississippi, North Carolina, Oklahoma, South Carolina, Tennessee, Texas, and Virginia.

12:50 p.m. Press availability with local press

to

1:30 p.m.

1:45 p.m.

You and Mrs. Ford and Rep. and Mrs. Treen arrive second level microphone area as SS NATCHEZ ties up alongside the Destrehan Ferry Landing.

OPEN PRESS COVERAGE  
CROWD SITUATION



1:50 p.m. Introduction of you by Rep. Treen.

1:53 p.m. PRESIDENTIAL REMARKS.

FULL PRESS COVERAGE

2:00 p.m. Remarks conclude.

You and Mrs. Ford and Rep. and Mrs. Treen depart second level and proceed onto the ferry landing and levee to greet the crowd.

OPEN PRESS COVERAGE  
CROWD SITUATION

You and Mrs. Ford will be met by:

Mr. Leonard LeDoux, St. Charles' Parish President

Mr. John St. Amant, St. Charles' Parish Sheriff

Mr. Edward Unfresna, St. Charles' Parish Clerk  
of Court

Mr. Clyde Gisclair, St. Charles' Parish Assessor

Judge William Bradley

Mr. Percy De Jean, St. Charles' Parish School  
Board President

OPEN PRESS COVERAGE

2:25 p.m. You and Mrs. Ford and Rep. and Mrs. Treen return onboard SS NATCHEZ and proceed to the upper deck microphone area.

2:30 p.m. You and Mrs. Ford and Rep. and Mrs. Treen arrive upper deck area and bid farewell to the crowd at the ferry landing as SS NATCHEZ gets underway for the Toulouse Street Wharf at Jackson Square, New Orleans.

(Cruising time: 2 hours, 45 minutes)

2:35 p.m. You and Mrs. Ford arrive Quarters

2:35 p.m. PERSONAL TIME

to

3:30 p.m.





3:30 p.m.  
to  
4:30 p.m.

Editorial Board for Southern Editors and  
Publishers

4:30 p.m.  
to  
5:15 p.m.

PERSONAL TIME.

5:15 p.m.

You and Mrs. Ford arrive upper deck microphone  
area as SS NATCHEZ ties up alongside the Toulouse  
Street Wharf at Jackson Square.

POSSIBLE LIVE NATIONWIDE TELEVISION  
CROWD SITUATION

5:20 p.m.

PRESIDENTIAL REMARKS.

POSSIBLE LIVE NATIONWIDE TELEVISION

5:30 p.m.

Remarks conclude.

You and Mrs. Ford depart upper deck and proceed  
onto the Wharf en route motorcade for boarding,  
greeting the crowd along the way.

OPEN PRESS COVERAGE

NOTE: The Imperial Brass Band and the New  
Orleans Saints Bonnie Aimee Dancers will precede  
the motorcade on a brief parade to Jackson Square.

5:45 p.m.

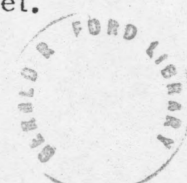
Motorcade departs Toulouse Street Wharf en  
route Hyatt Regency Hotel, New Orleans.

(Driving time: 5 minutes)

5:50 p.m.

Motorcade arrives Hyatt Regency Hotel.

PRESS POOL COVERAGE  
CLOSED ARRIVAL



You and Mrs. Ford will be met by:

Mr. and Mrs. Tom Gaskill, Hyatt Regency  
Hotel General Manager

Mr. and Mrs. Steve Kronek, Hyatt Regency  
Hotel Executive Assistant Manager

Mr. and Mrs. John Russell, Hyatt Regency  
Hotel Sales Manager

You and Mrs. Ford, escorted by the Gaskills,  
proceed inside hotel en route Suite.

6:00 p.m. You and Mrs. Ford arrive Suite.

PERSONAL TIME: 1 hour, 50 minutes

PRIVATE DINNER AT A LOCAL RESTAURANT

7:40 p.m. You and Mrs. Ford depart Suite en route motorcade  
for boarding.

7:45 p.m. Motorcade departs Hyatt Regency Hotel en route  
a local restaurant.

(Driving time: 15minutes)

8:00 p.m. Motorcade arrives a local restaurant.

OPEN PRESS COVERAGE  
OPEN ARRIVAL

You and Mrs. Ford and their guests proceed inside  
for private dinner.

WRITING PRESS POOL COVERAGE

10:00 p.m. You and Mrs. Ford proceed to motorcade for boarding.

10:05 p.m. Motorcade departs a local restaurant en route  
Hyatt Regency Hotel.

(Driving time: 15 minutes)



10:20 p.m.

Motorcade arrives Hyatt Regency Hotel.

OPEN PRESS COVERAGE  
CLOSED ARRIVAL

You and Mrs. Ford proceed to Suite.

10:25 p.m.

You and Mrs. Ford arrive Suite.

OVERNIGHT





9/24/76  
7:30 a.m.

PROPOSED SCHEDULE

MRS. FORD'S VISIT TO WISCONSIN  
Sunday, September 26, '76

12:20 p.m. Mrs. Ford DEPARTS suite enroute motorcade for boarding.

Motorcade as follows:

Lead P. Sorum

Mrs. Ford's car Mrs. Ford

Follow-up

Staff #1 C. Porembka  
S. Weidenfeld  
K. Schumacher

Staff #2 J. Kirk

12:30 p.m. MOTORCADE DEPARTS Hyatt Regency Hotel enroute New Orleans International Airport.

(Driving time: 20 minutes)

12:50 p.m. MOTORCADE ARRIVES New Orleans International Airport.  
Mrs. Ford boards C-9.

Manifest as follows:

Mrs. Ford USSS  
C. Porembka USSS  
S. Weidenfeld USSS  
P. Sorum  
K. Schumacher  
J. Kirk  
H. Oldenberg

1:00 p.m. C-9 DEPARTS New Orleans International Airport enroute Billy Mitchell Field, Milwaukee, Wisconsin.

(Flying time: 2 hrs., 10 min.)  
No time change.  
Lunch will be served on board.

Page Two  
Mrs. Ford - Wisconsin

3:10 p.m. C-9 ARRIVES Billy Mitchell Field (Air Reserve Ramp).

Mrs. Ford will be met by:

- Governor Warren P. Knowles, PFC State Chairman;
- Mr. and Mrs. George Parker (Nancy), State GOP Chairman;
- Mr. and Mrs. Ody Fish (Mary Ellen), National Committeeman;
- Mr. and Mrs. Otto (Sharon and William), Milwaukee GOP Chairwoman;
- Congressman Bob Kasten;
- Mr. J. Michael Borden, State GOP Treasurer;
- Mr. and Mrs. Quinn Martin (PFC Committee Members, Wisconsin)
- Mr. William Bonfield, PFC Controller for State;
- Mr. Thomas Buestrin, good PFC worker;
- Mr. Stanley York, Candidate for U.S. Senate, running against Bill Proxmire;

Mrs. Ford proceeds to motorcade for boarding.

Motorcade as on departure  
except add P. Matson to  
Press Bus.

3:20 p.m. MOTORCADE DEPARTS Billy Mitchell Field enroute Old Heidelberg Park.

(Driving time: 20 minutes)

3:40 p.m. MOTORCADE ARRIVES Old Heidelberg Park.

Mrs. Ford will be met by:

- George and Elaine Enders, President of United German Societies;
- John and Betty Enders, Vice President of United German Societies;
- Emil and Laverne Leuzinger, President of Bavarian Inn - Mr. Leuzinger will be your first guide in the park;



Continued on next page with greeters at  
Heidelberg Park...

- Harold and Edna Seemann, President of United German Societies Land Corporation - Mr. Seeman will be your second guide through the park;
- John and Carol Schafer, President of O'Dberlandler (a German Club)
- Antone and Ann Krgidl, President of United German Societies Soccer Club;
- Joseph and Jo-Ann Klingseilen, President of Wendlstonana (a German Club);
- Tony and Charlotte Lingel, President of Geangverein Club;
- Janet Klingseisen, Oktoberfest Queen.

3:50 p.m. Mrs. Ford, escorted by Mr. Emil Leuzinger, proceeds through crowd to stage to greet attendees at United German Societies Oktoberfest.

OPEN PRESS COVERAGE

ATTENDANCE: 5,000

Program:

- 4:00 - George Enders, Master of Ceremonies, makes welcoming remarks to Mrs. Ford.
- 4:01 - Introduction of first dance group for Mrs. Ford's viewing.
- 4:04 - Introduction of second dance group.
- 4:08 - George Enders introduces Queen to make presentation of German Bavarian Flowers to Mrs. Ford.
- 4:09 - Brief remarks by Mrs. Ford.
- 4:10 - George Enders concludes program with toast to Mrs. Ford.

- 4:12 p.m. Mrs. Ford DEPARTS stage enroute Bar-B-Que and picnic area to informally greet guests; escorted by George Enders off-stage and introduced again to second escort, Harold Seemann.
- 4:45 p.m. Mrs. Ford bids farewell and departs enroute motorcade for boarding.
- 4:50 p.m. MOTORCADE DEPARTS Old Heidelberg Park enroute Billy Mitchell Field.

(Driving time: 25 minutes)





Page Four  
Mrs. Ford - Wisconsin

5:15 p.m. MOTORCADE ARRIVES Billy Mitchell Field.  
Mrs. Ford boards C-9.

Manifest as on arrival  
except add J. Crute and  
A. Dalton.

5:20 p.m. C-9 DEPARTS Billy Mitchell Field enroute Andrews  
Air Force Base.

Flying time: 1 hour, 40 minutes  
Time change: + 1 hour  
Snacks will be served on board

8:05 p.m. C-9 ARRIVES Andrews Air Force Base.  
Mrs. Ford boards motorcade.

8:15 p.m. MOTORCADE DEPARTS Andrews Air Force Base enroute  
South Grounds.

(Driving time: 25 minutes)

8:40 p.m. MOTORCADE ARRIVES South Grounds.

F.Y.I. - Advanceman, Jeff Crute with Pete Sorum  
Weather expected: 60 Degrees, Sunny

