

**The original documents are located in Box 16, folder “8/20/76-9/04/76 - Vail, CO (1)” of the Betty Ford White House Papers, 1973-1977 at the Gerald R. Ford Presidential Library.**

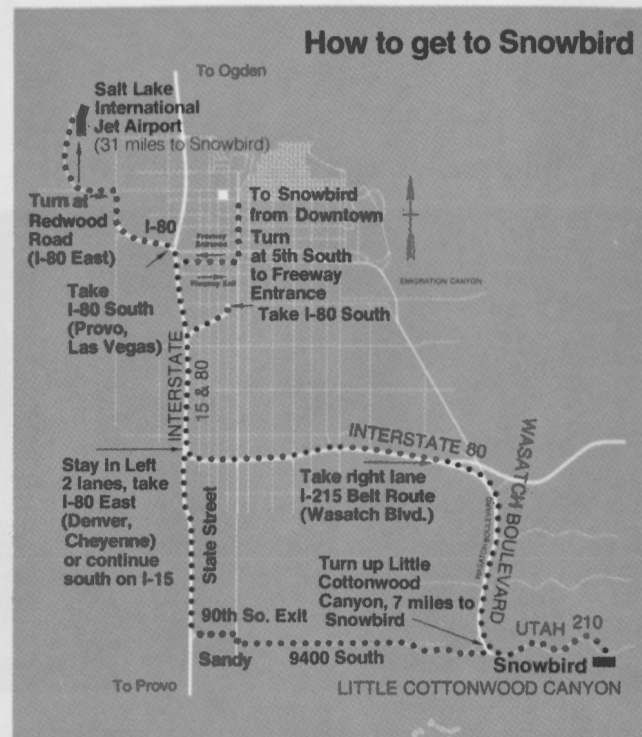
### **Copyright Notice**

The copyright law of the United States (Title 17, United States Code) governs the making of photocopies or other reproductions of copyrighted material. Betty Ford donated to the United States of America her copyrights in all of her unpublished writings in National Archives collections. Works prepared by U.S. Government employees as part of their official duties are in the public domain. The copyrights to materials written by other individuals or organizations are presumed to remain with them. If you think any of the information displayed in the PDF is subject to a valid copyright claim, please contact the Gerald R. Ford Presidential Library.



## The 1975-76 Ski Season

Snowbird soars into its fifth and finest ski season November 21, 1975, through April 18, 1976. Located in an area with an average annual snowfall of 450 inches, Snowbird is a skiers' mecca for Utah residents and visitors from around the world. The Aerial Tramway and four high-capacity double chairlifts serve 32 beginning, intermediate, and expert runs and many open skiing areas. For more ski season information, send for our 1975-76 Winter Brochure, available in July, 1975. Write: Snowbird Ski Brochure, Attn: Marketing Dept. Snowbird, Utah 84070. For reservations, phone (801) 742-2000.



**SNOWBIRD**...30 minutes southeast of downtown Salt Lake City in the Wasatch National Forest's Little Cottonwood Canyon.

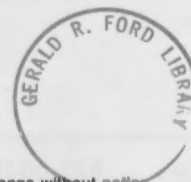
Transportation from Salt Lake City to Snowbird: Taxi, rental car, charter bus or helicopter. Transportation to Salt Lake City: Six airlines serve Salt Lake International Airport; Greyhound and Continental Trailways bus service; Denver and Rio Grande and AMTRAK rail service (Ogden).

### AIRLINES SERVING SALT LAKE CITY, UTAH

American Airlines, Hughes Air West, United Airlines, Frontier Air Lines, Texas International, Western Airlines.



**Snowbird welcomes the American Express card at most area facilities.**



Prices, rates and dates subject to change without notice.  
Summer lodging available June 1 - November 1, 1975.

Printed in USA 4/75 125M

# snowbird summerside

1975







It begins quietly with the gradual melting of the world-famous snows of the Wasatch Range.

Ski runs covered only weeks before by light Utah powder yield to fields of wildflowers, and suddenly Snowbird is more than one of America's finest ski resorts — it's a delightful summer *experience!*

Here man and nature are in harmony. The area's beauty is made accessible and hospitable though carefully planned and constructed resort facilities.

#### **Accommodating summer prices.**

The Snowbird Village offers overnight lodging for a night, a week, or even longer at low summer rates.

There's fine dining (steak and crab combinations, shrimp, seafood banquets, Sunday brunches) or quick snacks and more in an interesting

variety of restaurants. There are shops in which to browse, even a general store with a delicatessen, take-along-foods and knickknacks. Snowbird has warm (not hot) days, perfect for swimming, sunbathing, or hiking. The nights are crisp for peaceful sleeping. And there are *complete* facilities for conferences, group meetings, banquets, weddings or parties!

#### **America's most visually exciting aerial tram ride.**

The Snowbird Aerial Tramway glides smoothly and quietly up to 11,000-ft. Hidden Peak. Once this unsurpassed view could be seen only by those with the physical stamina and desire to make the steep ascent. Today Snowbird's incredible Swiss-made tramway provides access to these spectacular mountain views to everyone.

You'll see the unmatched grandeur of the Wasatch

Range, the Salt Lake Valley floor, the Oquirrh Mountains to the West. You're eye-to-eye with such mountain peaks as Timpanogos, Lone Peak, and the Pfeifferhorn. The Cache National Forest is to the north; to the southeast is the lush Heber Valley and you'll have the best view of Little Cottonwood Canyon itself, hewn ages ago by massive glaciers.

Spend as much time at the top as you wish, then enjoy the Tram's descent back to the Village. Or you can hike down, which takes about two beautiful hours. (Be sure to wear sturdy hiking shoes.) Either way, the Snowbird Aerial Tram is more than just access to awe-inspiring views. It's an interesting lesson in the area's history, geography, flora and fauna.

#### **Tramway operating hours.** June 7 – October 13, 1975

Monday-Friday noon to 8 p.m., Saturday, Sunday and holidays 11 a.m. to 8 p.m. Adult \$3.00, Child 6-12 and Senior 65 and older \$2.00, Children 5 or younger with an adult receive a free ticket. Family and group rates are available.

**Snowbird...30 minutes southeast of downtown Salt Lake City in the Wasatch National Forest's Little Cottonwood Canyon.**

# the snowbird lodges

the Lodge at Snowbird / Turramurra Lodge / Iron Blossam Lodge / the Cliff



## The Lodge at Snowbird Turramurra Lodge/Iron Blossam Lodge

Luxurious lodging in incomparable, natural surroundings. Each of these three fine lodges features spacious deluxe rooms—studios, bedrooms and suites; heated swimming pools; men's and women's sauna baths; card room. Each room has a private balcony and a beautiful view of the mountains; fireplaces and kitchens in all studios and suites. The Lodge at Snowbird, located nearest to the Snowbird Center, offers 160 rooms and an on-site restaurant. The 68-room Turramurra and 183-room Iron Blossam are adjacent. All at low summer rates!

### Bedroom—

Exterior balcony, full bath, two queen-size beds, color TV.

1 or 2 persons ..... from **\$19.50**  
\$2.00 each additional person

### Studio—

Fully equipped kitchen, fireplace, exterior balcony, full bath, queen-size sofa bed, color TV.

1 or 2 persons ..... from **\$19.50**

### Suite—

Living room, fully equipped kitchen, fireplace, exterior balcony, two full baths, bedroom with two double beds, queen-size sofa bed, color TV.

Occupancy—one to four persons ..... **\$39.00**  
\$2.00 each additional person

There is no charge for children under 13, occupying the same room with parents. Ask about our special group rates.

Summer lodging rates effective: June 1 thru November 1, 1975

## The Cliff

Snowbird's award-winning lodge is open during the summer and offers a choice of exciting activities. There are relaxing before-dinner drinks in the Eagle's Nest Lounge, fine dining nightly (except Sunday and Monday), and the famous Sunday Hunt Breakfast. Complete facilities for meetings, parties for small and medium-sized groups. Lodging available to groups only by special arrangement.

**Special Getaway Package** two nights lodging and Snowbird Aerial Tram Ride. **Single Occupancy — \$43.00** (includes tax) **Double Occupancy \$22.00** (per person, includes tax)

dates: June 7–October 13, 1975



# for your dining and entertainment pleasure

restaurants/lounges/shops/services



**Steak Pit**—Truly one of the West's great steak houses with char-broiled beef, baked Idaho potatoes, marinated mushrooms, artichokes, hot homemade bread, cold salad and cheesecake. Crab, shrimp, chicken and combination entrées.  
Sunday - Thursday 6 p.m. - 10 p.m.  
Friday - Saturday 6 p.m. - 11 p.m.  
Liquor store on the premises, nightly except Sunday 6:30 p.m. - 10:30 p.m.

**Plaza Restaurant**—Serving the finest Sunday Brunch you'll ever have. Sunday 10:30 a.m. - 3 p.m.

**Forklift Restaurant**—The Forklift features a casual atmosphere and dining both indoors and outdoors, daily 7:30 a.m. - 10 p.m.

**Golden Cliff Restaurant**—Elegant atmosphere and attentive service await you at the Cliff Lodge's beautiful restaurant. Prime rib buffet, Wednesday; seafood buffet, Friday; dine and dance, Saturday; 6:30 p.m. - 9:30 p.m. Brunch, Sunday, 10:30 a.m. - 3:30 p.m. Closed Monday and Tuesday. Reservations required.

**Ye Ol' Cracked Egg**—Breakfast, lunch and dinner served daily 8 a.m. - 6 p.m. Sunday brunch, 10 a.m. - 3 p.m. Located in the Lodge at Snowbird.

**The Bird Feeder**—Sandwiches, hot dogs, drinks and ice cream served quickly from a convenient location adjacent to the Tram base station. Open daily, 11 a.m. - 8 p.m.

**Utah State Package Liquor Agency**—A selection of domestic and imported wines and spirits is available in fifths, pints and mini-bottles. Open Monday - Thursday, 6 p.m. - 9 p.m., Friday, 6 p.m. - 11 p.m. and Saturday, 3 p.m. - 11 p.m.

**Tram Room**—See all the inner workings of the aerial tram while enjoying your favorite drink (we supply the mixer) and boogie to the 40-speaker quadrophonic sound and light system. Check out the Tram Game Room, too. It's all at the Snowbird Center next door to the Steak Pit, nightly 5 p.m. - 12 midnight.

**Eagle's Nest Lounge**—Visit the Cliff's attractive lounge for a quiet drink and light hors d'oeuvres. Utah State Liquor Agency located at the Cliff Lodge. Closed Sunday.

**General Gritts' General Store**—A full-service country store. Cheeses, meats, beverages and packaged deli items from around the world. Chicken to go! Open daily, 11 a.m. - 5 p.m.

**Photohaus**—Film, processing service, fine photographic prints and imported gift items. Open daily, 11 a.m. - 6 p.m.

**Snowbird Pharmacy**—Prescription and non-prescription drugs, toiletries, magazines and souvenirs. Open daily, 9 a.m. - 7 p.m.

**Timberhaus**—Summer and winter sportswear and equipment for the whole family. Back-packing equipment rentals and fishing-guide service. Open daily, 10 a.m. - 5 p.m.

**Tracy Collins Bank**—Open weekdays, 10 a.m. - 4:30 p.m.

**U.S. Post Office**—Open daily at the Snowbird Pharmacy, 9 a.m. - 7 p.m.

**Sales Information**—Investigate Snowbird's condominium ownership opportunities. Office open daily, 9 a.m. - 6 p.m.

**Aerial Trams/Shops**—June 7 - October 13, 1975

**Lodge Rates**—Effective June 1 - November 1, 1975

**Steak Pit/Tram Room**—Open year-round

**Group meetings**—Year-round facilities

*All facilities at Snowbird Center unless noted.*

**Snowbird is such a refreshing place for meetings, parties or small conferences, we call it "GROUP THERAPY."**

Consider Snowbird's therapeutic advantages for your group next time you plan a party, seminar or conference. Our Group Meeting specialists will assist you in planning your group's most refreshing get-together ever. We have complete facilities for groups of 4 to 450: a selection of meeting rooms, audio-visual equipment, food service for outdoor barbeques to grand banquets, and deluxe overnight accommodations in fine lodges. And it's all available at special rates for groups of 20 or more. After the meeting, there's everything for which Snowbird is famous.

Write or call for Snowbird's free "Group Therapy" meetings planner kit, which is full of ideas on how to have a better group meeting. Then, for more ideas and complete conference and party planning assistance, see one of our Group Meeting specialists. Write: Group Sales Manager, Snowbird, Utah 84070 or phone: (801) 521-6040 (801) 742-2222.

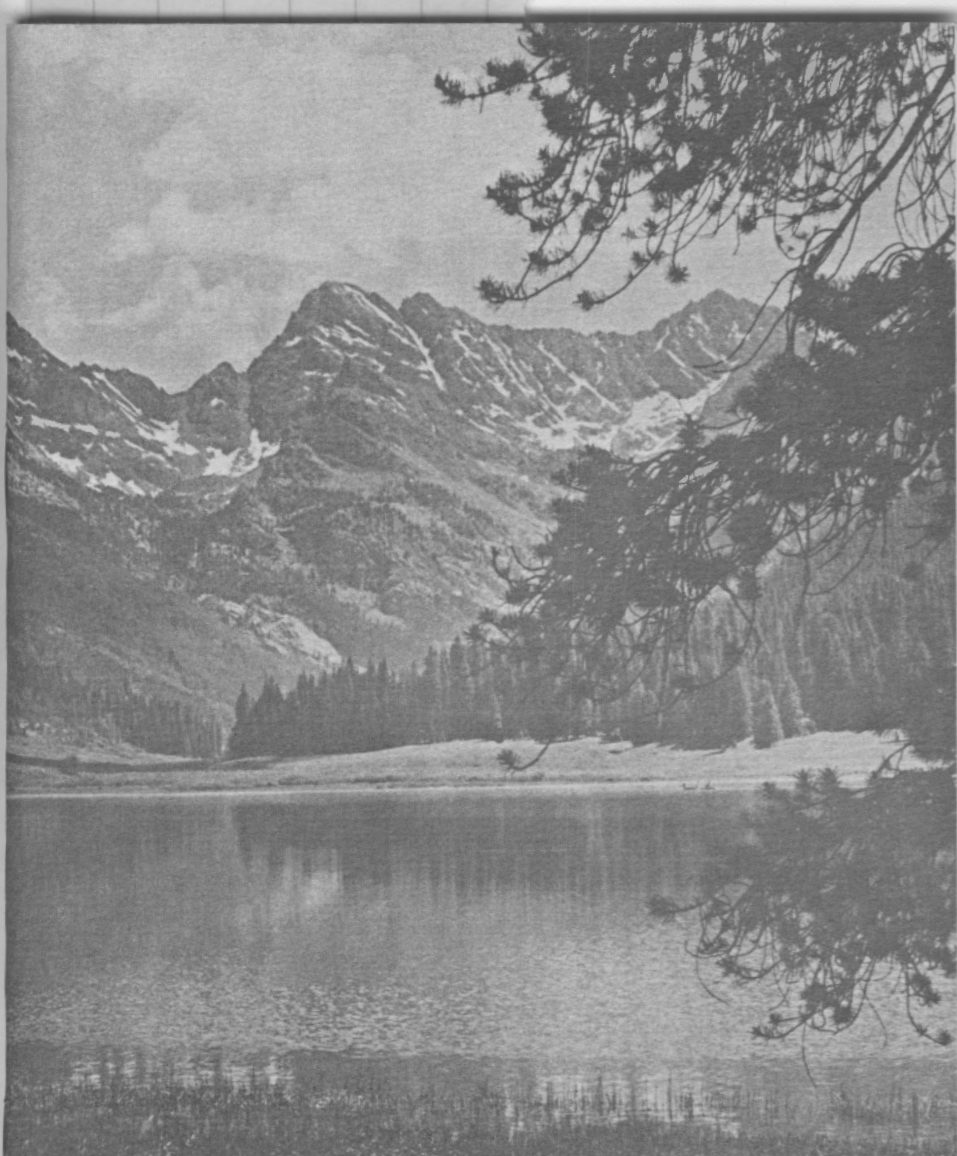
Telephone  
Area Code 801

Snowbird Switchboard . . . 742-2222 (Salt Lake direct line)  
Central Reservations . . . . .

521-6040 Cliff Lodge  
742-2000 Lodge at Snowbird

742-3300 Turramurra Lodge . . . . . 742-2500  
742-2100 Iron Blossam Lodge . . . . . 742-3100

Some items in this folder were not digitized because it contains copyrighted materials. Please contact the Gerald R. Ford Presidential Library for access to these materials.



# Our Side Of The Mountain

Hikes and Scenic Drives in the Vail Area

By Jill Vig and Pat Hamilton



To Mrs. Ford-

Who has helped make our  
side of the mountain something  
extra special.

PAT and Jill

## Table Of Contents

Introduction .....	page 2
--------------------	--------

### Take A Hike

Two Elk Creek .....	page 3
Spraddle Creek Road .....	page 4
Holy Cross City .....	page 5
Hanging Lake and Bridal Veil Falls .....	page 8
Notch Mountain .....	page 9
Bighorn Creek .....	page 11
Grouse Lake .....	page 13
Booth Lake .....	page 14
Turquoise Lake .....	page 16

### Day Tripping

Glenwood Springs .....	page 19
Red Cliff .....	page 21
Leadville .....	page 23
Georgetown .....	page 26
Silver Plume .....	page 29
Sweetwater Lake .....	page 32
Camp Hale .....	page 33
Climax .....	page 36
Fulford .....	page 38
South Park City and Fairplay .....	page 41
Bond .....	page 44
Breckenridge .....	page 46

Text and Photographs by Jill Vig

Design, Lay-out and Cover Photograph by Pat Hamilton

**"Our Side Of The Mountain, Hikes and Scenic Drives in the Vail Area"**  
**By Jill Vig and Pat Hamilton**  
**Copyright 1976**



Mr & Mrs. Pepi Frankhammes  
request the pleasure of your  
company at a picnic,  
tomorrow, August 25th.  
at . . . whenever you are  
through with fall.

Honoring:

The President and his  
First Lady.



This extraordinary card  
represents a milestone  
in American Lithography...  
as it is published on re-  
cycled paper especially  
selected to conserve our  
natural resources and to  
protect our environment.



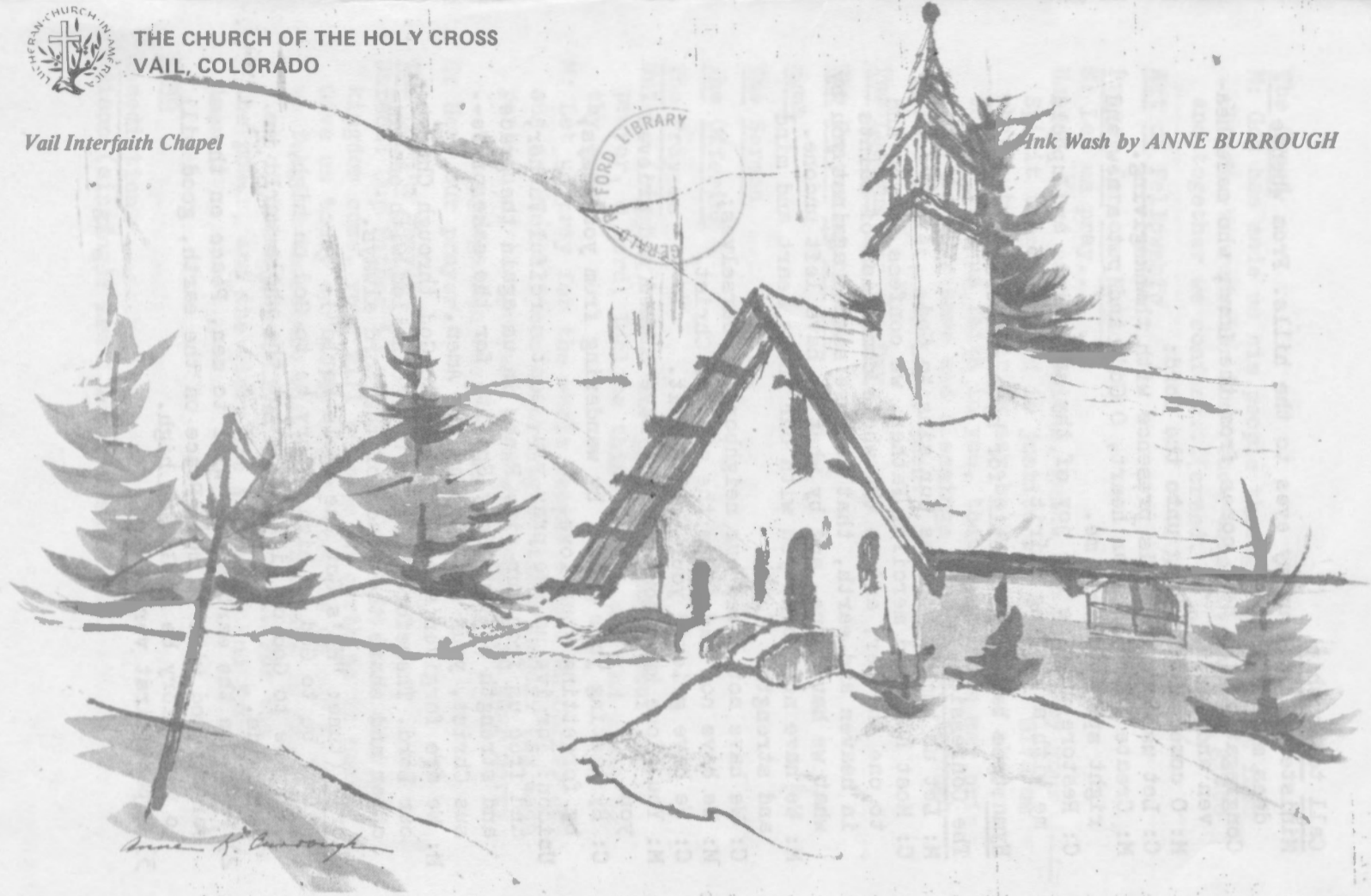
The President and  
Mrs. Forol.



THE CHURCH OF THE HOLY CROSS  
VAIL, COLORADO

*Vail Interfaith Chapel*

*Ink Wash by ANNE BURROUGH*



*Anne R. Burrough*

### Call to Worship

Minister: I lift up my eyes to the hills. From whence does my help come?

Congregation: My help comes from the Lord, who made heaven and earth.

M: O come, let us sing unto the Lord:

C: Let us come into his presence with thanksgiving.

M: Create in me a clean heart, O God, and put a new and right spirit within me.

C: Restore unto me the joy of thy salvation, and uphold me with a willing spirit.

Hymn (see back of bulletin for hymn numbers)

### The Confession

M: Let us humbly confess our sins to God.

C: Most holy and merciful Father, we confess to you and to one another, and to the whole communion of saints in heaven and earth, that we have sinned against you by what we have done, and by what we have left undone.

M: We have not loved you with our whole heart and mind and strength,

C: We have not loved our neighbors as ourselves;

M: We have not had in us the mind of Christ,

C: We have grieved your Holy Spirit.

M: You alone know how often we have sinned and grieved you,

C: By wasting your gifts, by wandering from your ways, by forgetting your love.

Unison: Forgive us, we pray you, most merciful Father, and free us from our sin. Renew in us again the grace and strength of your Holy Spirit, for the sake of Jesus Christ, your Son our Savior. Amen.

M: We are forgiven and reconciled to God through Christ our Lord. Therefore, let us be reconciled with one another and share the peace of the Lord always.

Gloria (tune: "He's Got the Whole World")

1) Glory be to God on high, Glory be to God on high, Glory be to God on high; He's got the whole world in his hands.

2) Peace on the earth, good will to men, Peace on the earth, good will to men, Peace on the earth, good will to men, Glory be to God on high.

3) Repeat first verse

### The Creed

M: God has made us his people through our Baptism into Christ. We remember and renew this covenant of grace and together we confess...(creed, as announced)

### Act of Fellowship

### Prayer for our Nation

M: Let us pray...

Unison: Lord of the nations, guide our people by your Spirit to go forward in justice and freedom. Give us what outward prosperity may be your will, but above all things give us faith in you, that our nation may bring glory to your name and blessings to mankind; through Jesus Christ, our Lord. Amen.

### The Lessons for the Day

### The Prayer of the Day

### Hymn

### The Sermon

### The Offering

### The Prayers

Unison (singing): Hear our prayer, O Lord; Hear our prayer, O Lord; Incline thine ear to us, And grant us thy peace.

M: Let us pray for the whole people of God in Christ Jesus and for all men according to their needs. (As each portion of the prayers ends with "Lord, in your mercy..." congregation responds as follows)

C: Hear our prayer.

### The Lord's Prayer

Unison: Our Father in heaven, hallowed be your name, your kingdom come, your will be done on earth as in heaven. Give us today our daily bread. Forgive us our sins as we forgive those who sin against us. Save us from the time of trial and deliver us from evil. For the kingdom, the power, and the glory are yours now and for ever. Amen.

### Hymn

### Benediction

Unison (singing): Amen! Amen! Amen!

THE CHURCH OF THE HOLY CROSS

(a unit of the High Country Lutheran Parish)

Don Simonton, pastor

Diana Holden, organist

Stan and Aldah Medsker, hosts

August 22, 1976

Yellowstone Christmas

"YELLOWSTONE CHRISTMAS"? You'll have to await the sermon to discover the reason, but we are today celebrating the birthday of our Lord. We invite you to recapture the spirit of that season -- or be captured by it.

PLEASE NOTE -- There will be a brief congregational meeting downstairs, immediately following this service. We hope all our members will remain for it (relating to budget changes necessary for the calling of the new pastor in Glenwood Springs).

AND PLEASE NOTE the change of route to the Mountainside Service at 11:00. If lower Mill Creek Road is closed (as announced), take Beaver Dam to Forest, Forest to Rock Ledge, follow the detour signs to Mill Creek Road and continue to the chapel area. In effect until the entire road is reopened...Special thanks to Gina Romeo for handling the service last Sunday in the pastor's absence.

CONGRATULATIONS ARE in order for Diane Nowery, married this week to Neal Rose of Denver. Diane will no longer be able to help as our secretary, and we're grateful to Guerin Fritzlen for taking over this important job.

HAVE YOU made a pledge to our chapel expansion drive yet? We need your help! Pick up a pledge card at the rear of the nave today.

STEWARDSHIP OF GOD'S World Dept...Vail Intermountain Associates has requested a zoning change (county) which would probably wipe out any effectiveness of the only deer migration underpass on I-70 in this entire valley. Thoughtless development has already cost us most of the local deer herd; this could be a final blow. Send objections to the Eagle County Commissioners and/or attend the public hearing on Sept. 8, 9:00 AM, in Eagle.

Dear Betty,

This evening I am having cocktails here at home for a group from the Republican National Finance Committee who are meeting here at Vail to plan the October seventh Salute to The Candidate Dinner.

I hear that the President is involved with a group of juvenile men, but if your schedule permits, I hope that you can join us about 8:00 o'clock.

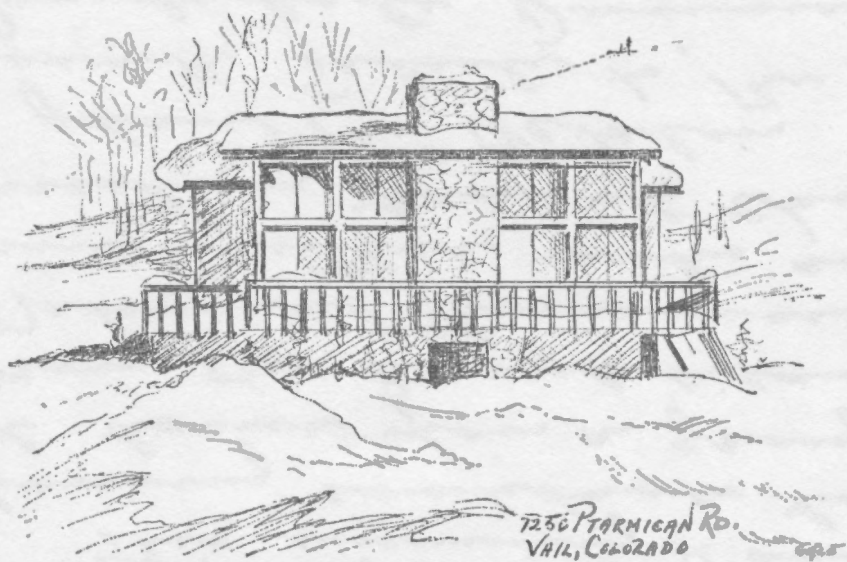
Affectionately,

Margaret Crow

August 26, 1976







1256 PTARMIGAN RD.  
VAIL, COLORADO

645

Mr. Land

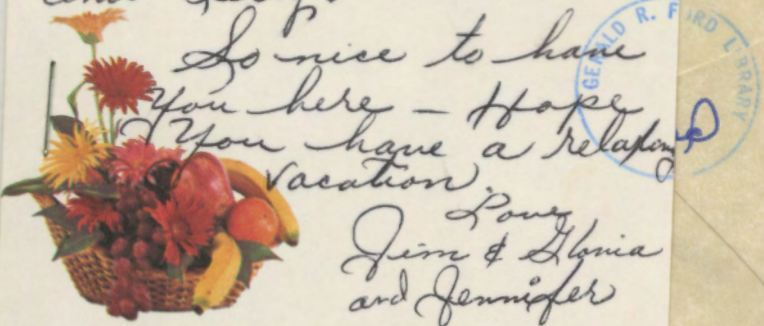
1250 Ptarmigan Road  
Vail, Colorado 81657

Mrs. F thanked personally  
Welcome to the  
Bass House!

Marion Elmquist



Well done Mr. President  
and Betty.



So nice to have  
you here - Hope  
you have a relaxing  
vacation

Love  
Jim & Gloria  
and Jennifer



THE WHITE HOUSE  
WASHINGTON

Marion  
ELMQUIST

Box 1653  
VAIL, COLORADO  
81657



pics taken





Wild flowers  
on my dressing  
table

Pink roses  
by my bed

JOHN  
HINNEY  
MADE USA

Sheila and Regi would  
like the pleasure of your  
company at a picnic on  
Wednesday, August 25th.  
at 5:00pm. Honoring  
the President and Mrs. Ford  
Location: Island on Vail  
Golfcourse beyond the  
Clubhouse.  
Dress: Casual



pics taken



Mrs. F thanked personally  
Welcome to the  
Bass House!

Mr. Ford



No note. Mrs. F. thanked  
personally

THE WHITE HOUSE  
WASHINGTON

Marion  
ELMQUIST  
Box 1653  
VAIL, COLORADO  
81657



pics taken

This extraordinary card  
represents a milestone  
in American Lithography...  
as it is published on re-  
cycled paper especially  
selected to conserve our  
natural resources and to  
protect our environment.

Stone House Inc. © Keene, New Hampshire  
300 CXB-3

Mrs. F thanked personally  
Welcome to the  
Bass House!

Marion Elmqvist



**Blossoms & Bric-a-brac**

Post Office Box 2767 • Vail, Colorado 81657

President and Mrs. Ford

THE WHITE HOUSE  
WASHINGTON

Marion  
ELMQVIST  
Box 1653  
VAIL, COLORADO  
81657



pics taken

To Susan  
Jack and  
Steve.



*To my very dear friend, Margaret Crow  
With all good wishes,*

*Betty Ford*

THE WHITE HOUSE

WASHINGTON

August 25, 1976

GUEST LIST FOR SHEIKA'S PICNIC

The President and Mrs. Ford  
Joe Canzeri  
Mr. and Mrs. John Carlson  
Mr. and Mrs. Red Cavaney  
Mr. and Mrs. Dick Cheney  
Mr. Bill Greener  
Mr. Alan Greenspan  
Mr. and Mrs. Robert Hartmann  
Mr. Jerry Jones  
Mr. and Mrs. Rogers Morton  
Mr. and Mrs. Ron Nessen  
Mr. and Mrs. Terry O'Donnell  
General Brent Scowcroft  
Mr. and Mrs. Stu Spencer  
Mr. and Mrs. Bill Teeter  
Mr. and Mrs. Ed (Sheila) Weidenfeld  
Mr. Dave Owen  
Mr. Mike Scanlon  
Mr. and Mrs. Dave Gergen  
Mr. and Mrs. Jim Cavanaugh  
Mr. Jim Baker  
Dr. Bill Lukash  
Capt Lee Domina  
Mr. and Mrs. O'Laughlin  
Mr. and Mrs. Larry Burdick  
Mr. and Mrs. Ted Kindel  
Mr. and Mrs. Ted Poliak  
Mr. and Mrs. Chris Jouflas  
Federal Judge and Mrs. Fred Winner  
Mr. William Stevens  
Mr. Miller Hicks  
Mr. and Mrs. Robert Norris  
Mr. and Mrs. Fred Meyer  
Mr. and Mrs. William Ruoff  
Mr. and Mrs. Bryon Brown





THE WHITE HOUSE

WASHINGTON

August 22, 1976

GUEST LIST FOR COCKTAILS AND DINNER

Mr. and Mrs. Fitzhugh Scott  
Mr. and Mrs. Pepi Gramshammer  
Mr. and Mrs. Ted Kendall  
Mr. and Mrs. Trammel Crow  
Mr. and Mrs. Jim Brown  
Mr. and Mrs. Larry Burdick  
Mr. Bud Palmer  
Mr. John Purcell  
Miss Jan Coates





THE WHITE HOUSE

WASHINGTON

August 23, 1976

GUEST LIST FOR DINNER AT THE LEFT BANK RESTAURANT

The President and Mrs. Ford

~~Mr. and Mrs. Dick Cheney~~

General Brent Scowcroft

Mr. and Mrs. Rogers Morton

Mr. and Mrs. Jim Brown



THE WHITE HOUSE

WASHINGTON

Colorado Elephant Reception  
Colorado Elephant Club

Saturday - August 28, 1976  
5:00 P.M.

The Scott Residence Patio

From: Terry O'Donnell **TOD**

I. PURPOSE

To greet members of the Colorado Elephant Club.

II. BACKGROUND, PARTICIPANTS, AND PRESS PLAN

A. Background: You agreed to host a reception at 5:00 p.m. Saturday, August 28, at the Scott Residence patio for approximately 40 members of the Colorado Elephant Club, an organization of those who have given \$1,000 to the Party. The request was made by Carl Williams, Colorado State GOP Chairman.

B. Participants: See list attached at TAB A.

C. Press Plan: Official photo coverage only.

III. TALKING POINTS

None required.





## PARTICIPANTS

\*Mr. Carl Williams, Colorado State GOP Chairman  
Mr. John Fuller, Co-Chairman of Elephant Club  
Mr. Clide Kissinger, State Finance Chairman (Also Co-Chairman

Mr. Vince Assaiante  
Mr. R.G. Baekel  
Mr. Don Brewer  
Mr. Zach Brinkerhoff  
Mr. Court Dietler  
Mr. Raymon Duncan  
Mr. Vincent Duncan  
Mr. Frank Ferris  
Mr. F.A. Foss  
Miss June Harper  
Mr. Martin Hart  
Mr. Robert Haynie  
Mr. Ramond Joeckel  
Mr. Robert Kadane  
Mr. J.B. Ladd (Bert)  
Mr. Jerome Lewis  
Mr. Dwight Moorehead  
Mr. M.A. (Andy) Long  
Mr. John Cranor  
Mr. Ed Northway  
Mr. Harry Paulson  
Mr. Jordan Perlmutter  
Mr. R.E. Puckett  
Mrs. Carl (Betty Joe) Reed  
Mr. Leonard Shalen  
Mr. D.L. Simosko  
Mr. Tom Bissels  
Mr. Don Vestal  
Mr. Rike Wootten  
Mr. Russell Writer  
Mr. John Reynolds  
Mr. Larry Mizel  
Mr. Jim Maxwell



Dr. William McKinnell  
Mr. Chuck Stevinson  
Mr. Ken Danneberg  
\*Mr. Tony Likins  
\*Mrs. Pat Likins

#### CONGRESSIONAL CANDIDATES

Mr. John Gonce Mr. Don Friedman	1st Congressional District -- Gonce and Friedman in primary September 14 to run against Pat Shroeder.
*Mr. Bob Dugan Mr. Ed Scott	2nd Congressional District -- Dugan and Scott in primary September 14 to run against Tim Worth.
Dr. Melvin Takaki	3rd Congressional District --to run against Frank Evans.

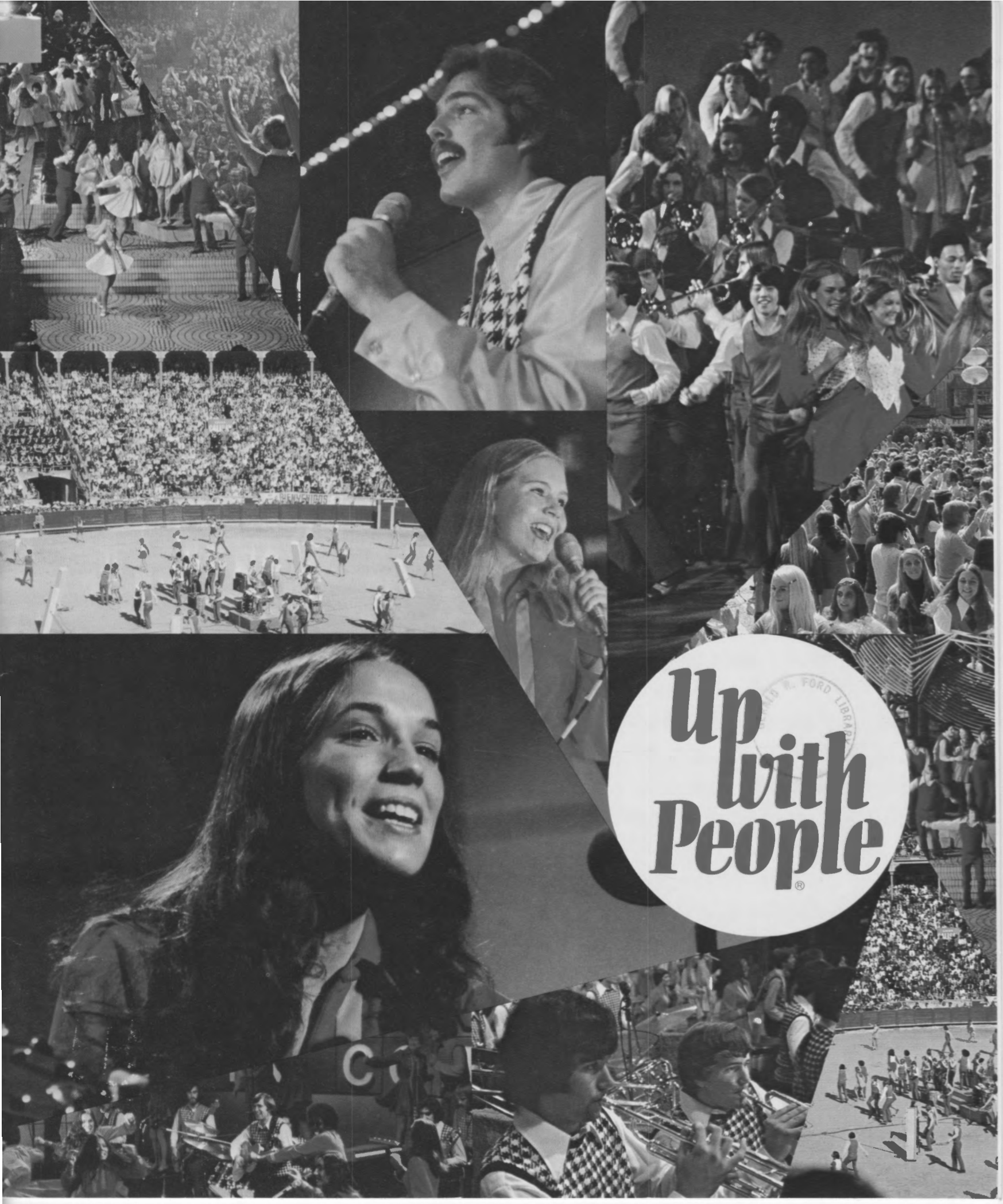
#### SPECIAL NOTE

Mr. John Love and Mr. John Vanderhoof, Honorary Chairmen of the  
Elephants Club, were invited but could not attend.

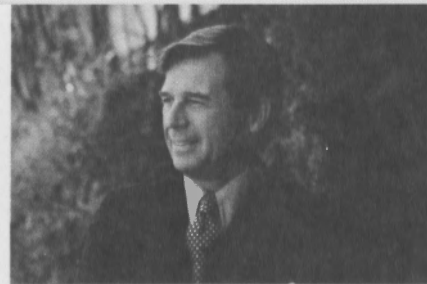




Some items in this folder were not digitized because it contains copyrighted materials. Please contact the Gerald R. Ford Presidential Library for access to these materials.



Up  
with  
People®



**A**ugust 1975. It is ten years since Up With People started . . . born and bred in the midst of the turbulent 60's . . . born out of an attempt to meet a need, a need manifesting itself in the growing upsurge of youth everywhere, from Berkeley to Bombay, from Chicago to Cairo.

It was not a question of age, but attitude. Educated, mobile, and future-oriented, this generation was inexorably linked by a growing technology and a shrinking planet. Their new concerns did not fit old concepts. They wanted to experience life, as well as be educated for life. Not all was right, neither was all wrong. They were searching . . .

The challenge "What are you trying to say and what do you really want to build in the world?" met an immediate response from young people. Music was the medium. The original musical revue, Up With People, was born. Was it a happening that would soon fade, or did it have a future? No one knew. There were no handbooks or blueprints, only a conviction to follow. An Italian friend described the beginning of Up With People as The Science of Action: "You do what needs to be done and then you think out the reasons for doing it."

People came forward to help. A small staff was formed. Some had musical talent and believed this musical expression might be a new way to communicate; a few were educators who believed that education and experience could be synonymous; and a lot were young men and women who saw in Up With People an expression of their ideas for the future and wanted to help in any way possible.

A thank-you must go to the families throughout 38 countries where Up With People has visited these past ten years. They not only opened their homes, hearts, and refrigerators, but they gave of themselves to their youthful guests in such a way that today the alumni of Up With People cite living in people's homes as one of the greatest cultural experiences of their year with the program.

Tribute must also be paid to the 3,500 young people from 27 countries who have spent at least a year with Up With People. In their own way, each left a mark on the people with whom they came in contact.

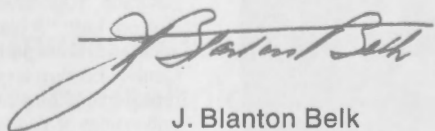
Now '75 and '76 . . . America's 200th birthday. We thought, "What can we do?" We came up with a plan which we hope will prove helpful to the country. We put together nine casts of Up With People, each numbering 50. People in over 700 different cities, large, small, and smaller, in all 50 states have invited Up With People. We will reach an estimated two million people through the live shows and through living in these communities.

We are available to do whatever people think would be most helpful in their situation. Our aim is to reach out and across America, performing for people everywhere we can — on the streets, in the schools, the colleges, inner cities, suburbs, prisons, elderly people's homes, reformatories, and Indian reservations. We have been honored by an invitation from Pueblo Indian leaders in New Mexico to come with a cast of 150, live in their homes, and perform for their people under the stars.

What do we hope to achieve and why are we doing this? Up With People is a completely free agent, and we are doing what we do because we want to do it. We hope this effort will lift the spirit and perspective of people. In this post-Vietnam, post-Watergate period, America's destiny has returned to the people. Perhaps if each of us took one new imaginative step in '75/'76, small though it may be, it might bring something new. What better time than now. Hopefully we can spark this and make it a memorable year for the country.

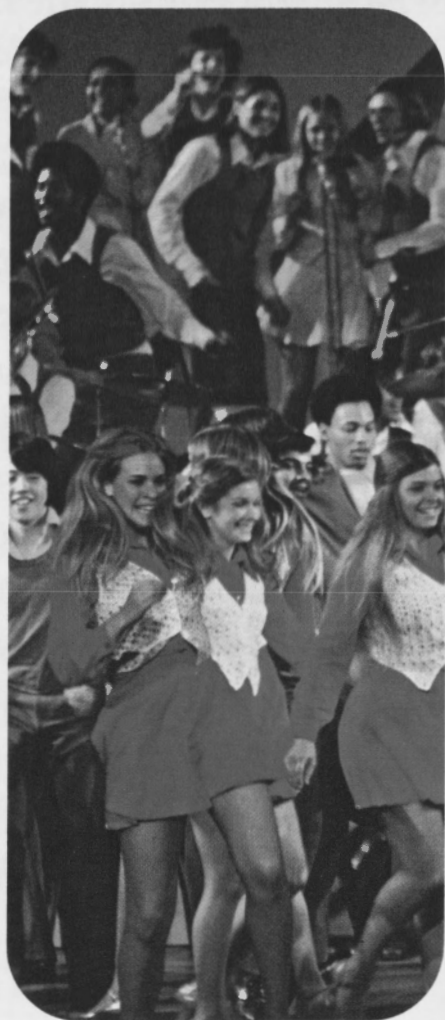
Although Up With People was born in the USA, from its inception it has been global in character. In the spring of 1976, a tenth cast will be formed to accept invitations to Poland, Yugoslavia, Switzerland and possibly the Middle East. In fact, our hope is that out of this year in America, people will see the possibility and potential of what this spontaneous expression and concept might mean in other countries and other situations. It would only be fitting, when one thinks of the nations and people who make up America, that something of fresh hope go forth from America to the world following our Bicentennial year.

Up With People is young, mobile, apolitical — a free agent. Born in the 60's, at work in the 70's, and looking forward to the 80's. Perhaps someday soon the youth of every nation will come together in this framework.



J. Blanton Belk  
President



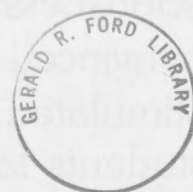


**Top Left:** Performance for students in Sibenik, Yugoslavia. **Middle:** Signing autographs for students after the show. **Top Right:** The famous Kalemegdan in Belgrade, Yugoslavia. **Bottom Left:** "A blaze of color and movement..." **Center:** Economics students representing the main universities of Yugoslavia. **Bottom Right:** On the road...



# UP WITH PEOPLE- EXPERIENTIAL LEARNING

By Derek L. T. Gill



Just how far American education has moved from the one-room schoolhouse on the prairie is demonstrated by an international musical revue in the Yugoslav city of Šibenik.

On the stage at Šibenik are 38 members of a cast of *Up With People*. The audience comprises 800 Yugoslav economics students. This is the 25th sell-out show that *Up With People* has given in 23 Yugoslav cities in 27 days.

After the show, which gains a standing ovation, the young cast members, between the ages of 18 and 23, mix in small, animated groups with the Yugoslav students. They discuss lifestyles, the concepts of Marx and Keynes, personal aspirations and the original lyrics of *Up With People's* songs.

An intense, dark-eyed Yugoslav girl who speaks near-perfect English turns to a blonde sophomore from Denver, Colorado, and says, "We still have many differences, but I hope we can always keep this kind of openness." The American girl smiles, "Differences, yes, but I guess we have even more in common if simply because we are human. Maybe this is the biggest discovery I've made since leaving my hometown."

*Up With People* is an independent, nonprofit, educational program with the aim of developing leadership, responsibility and understanding among races, classes and cultures.

*Up With People* annually attracts about 7,000 student applicants. One in 18 is finally selected. The casts have traveled six continents. In some countries, notably Belgium, Italy, Spain, Mexico and Venezuela, *Up With People* is now a household name.

Up With People is in fact ten years old. In the spring of 1965, eight college student presidents met at the home in Tucson, Arizona, of Mr. J. Blanton Belk, who had previously been engaged in international public service and educational activities. It was a time of campus turbulence and of the changing consciousness of America. After discussion with the student leaders, Belk became convinced that the concern of young people for social change could be positively stimulated through a new type of educational program — one that would bring students face-to-face with every kind and condition of people.

What was needed, Belk was persuaded, was a program to entice the best of a questing generation in revolt by offering a non-authoritarian alternative to permissiveness, cynicism and boredom. He and a colleague, Donald P. Birdsall, founded the organization and incorporated it in 1968.

Belk, who is listed in *Outstanding Educators of America*, is President and Chairman of Up With People. Youthfully charismatic, he is the inspiration and axis around which Up With People spins in ever-widening circles. To keep in touch with far-flung operations and to handle burgeoning administrative work on a modest (\$4 million) budget, Belk and Executive Vice President Birdsall have a hand-picked staff, based in Tucson, Arizona, and in Brussels, Belgium. Tucson was favored over big cities because, in Belk's phrase, "its frontier spirit is kin to our own."

Dedication to the aims of Up With People has to be a prime staff qualification for most could command considerably higher salaries for considerably shorter hours on the open market. Many of them rarely touch home base for along with Belk and Birdsall they collectively travel several hundreds of thousands of miles with or visiting casts and seeking people and organizations who can break new ground.

Jackson S. Hipps, Director of Educational Programs, speaks of the "clear criteria" in the final selection of student applicants.

"When we interview a young man or woman, the paramount question we ask ourselves is, 'What is he or she likely to do in the world?' We're vastly more interested in the answer to that question than in formal school qualifications and family background because we're looking for motivations and those intangible and indefinable attributes of leadership."



**Middle Right:** Up With People—an experience for all ages. **Top Left:** Encore! **Top Right:** What Color Is God's Skin? **Middle Left:** Visiting in a special children's hospital. **Bottom:** Cast member presents pin to Russian skater.



Applicants are usually high school graduates or college students. Hipps and his staff disqualify any who would not appear to have the stamina to survive and grow from an enormously demanding schedule.

"Two other related questions we are constantly asking ourselves," says Hipps, "are, 'What are we educating our young people for?' and 'What kind of world will they have to face?'"

Hipps admits to no easy answers. He echoes the futurists who chorus that, for better or worse, these next transitory decades will bring younger generations into an era of technology and global challenges far more complex than anything man has had to cope with in his past.

Not so much the thunderheaded horizons as recent international crises — classically the unexpected energy shortage — have persuaded *Up With People* that it is more profitable and relevant to train young people in decision-making and intellectual flexibility than in strategic approaches to possible or even probable problems.

Educational consultant, Dr. Morris Martin, visiting fellow of Princeton University and a former traveling faculty member with *Up With People*, points out that too many futurists are so fascinated by prospects of a nuclear holocaust and continental starvation that they fail to recognize from history that the future of man lies within himself.



**Left:** "Audience participation was their goal..." **Right:** Florence, Italy.



"Up With People," says Martin, "is aimed at releasing and cultivating the innate confidence and initiative of young people so that they're equipped to face and tackle all the great issues and challenges that may roll out of the future."

Up With People is designed to complement formal education. The importance, even the necessity of an ideal academic situation for specialized study and research is, of course, understood. But what Up With People has now hard-tested is that non-traditional, non-structured learning, often under the most difficult conditions, develops student maturity over a remarkably short period.

To the critic who submits that Up With People takes young men and women out of main street reality into an artificial environment of good fellowship, Belk replies that the shift is in fact in the other direction. The student who has lived securely in his home and local school environment is suddenly exposed to the real world of fear, selfishness, privation, bitterness, cultural diversities, different joys, hopes, heavens and hells.

"It is this contact with raw reality that nurtures wisdom," insists Belk, "for it is here that living and learning become synonymous." Up With People is not a movement, but rather an educational conduit or "a slingshot acceleration into life."

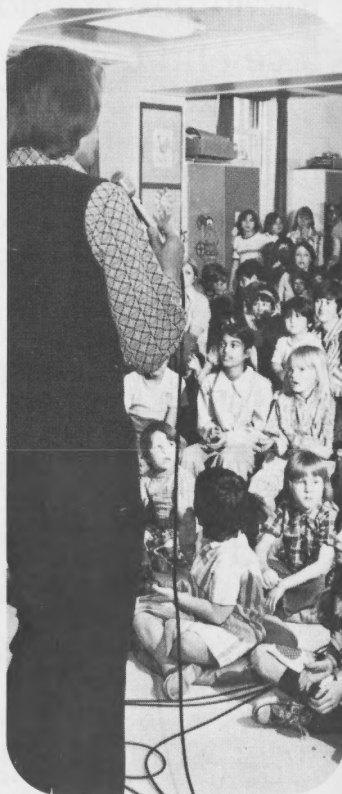
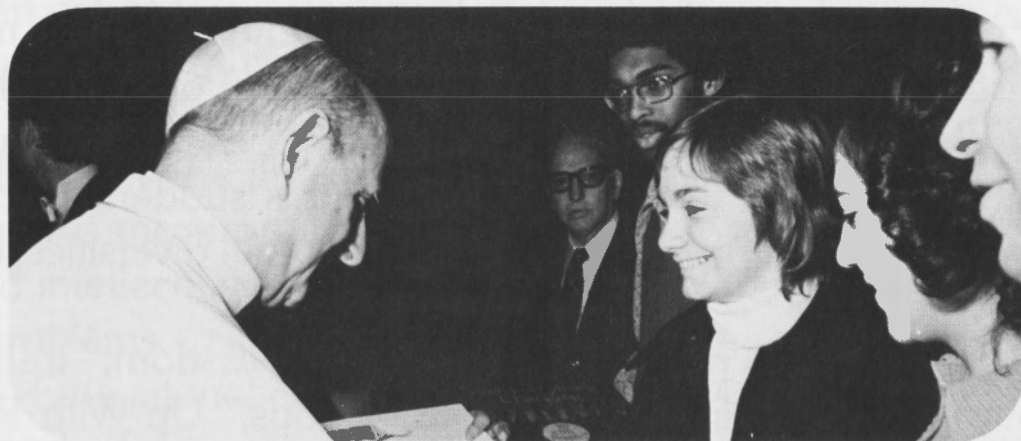


**Left:** Rehearsal Time. **Top Right:** Outdoor performance in Columbus, Ohio. **Bottom Right:** Host family pick-up.





# Up With People



**Top Left:** Pope Paul VI meets with cast members. **Top Right:** Cast members entertaining at a children's hospital. **Bottom Left:** Cast member on stage. **Bottom Right:** Up With People entertains 14,000 in Barcelona, Spain.



**Left:** "Equality, joy and the celebration of life." **Right:** Listening and Learning.

The education program itself is so flexible and socially relevant that it strains academic definition. Several universities, spearheaded by the University of Arizona, recognize Up With People's educational significance. The University of Arizona now provides an accredited program in conjunction with Up With People.

The organization has no more staunch supporter than Dr. Hermann K. Bleibtreu, a Harvard-trained anthropologist and former Dean of the University of Arizona's College of Liberal Arts. He submits that Up With People is a pace-setter of experiential learning, and that within a decade there will be total academic acceptance of extramural programs, close, he hopes, to the quality of that provided by Up With People.

Bleibtreu reflects, "Non-structured education is not new. But basically these ventures have amounted to no more than taking the classroom on the road as an answer to campus boredom. Then along comes Belk and his highly-motivated and intellectually potential kids from every social background, and I thought, 'If experiential learning cannot be successful with this bunch, it can never work.'"

University courses taken on the road naturally meld with student experiences. Appropriate Up With People courses now include social and political science, the humanities, business, speech, theater and music. (A few high school seniors can complete their final years on the basis of independent study.)



“What the Up With People student discovers,” claims Bleibtreu, “and what I think the organization is all about, is how human beings interrelate with one another and what the problems are in world views.”

The show itself is an integral part of the educational experience. It expects of the student a professional standard of performance both on and off the stage. The Up With People venture turns education around from being a self-serving, self-centered pursuit to expecting the student to give fully of his individual talents to everyone from a Pennsylvania coal miner to a Panamanian cabinet minister — as well as their wives and children.

Both in the United States and overseas, cast members are accommodated in private homes. Hospitality is arranged by small advance groups of students who work with service clubs, chambers of commerce and the like.

A girl student from Grosse Point, who had been educated in a convent, motivated by a country club tennis title and dieted on strawberries out of season, may well find herself in the four-roomed home of a mailman with seven children or if she is overseas, in the apartment of a card-carrying communist steelworker in Torino, Italy.

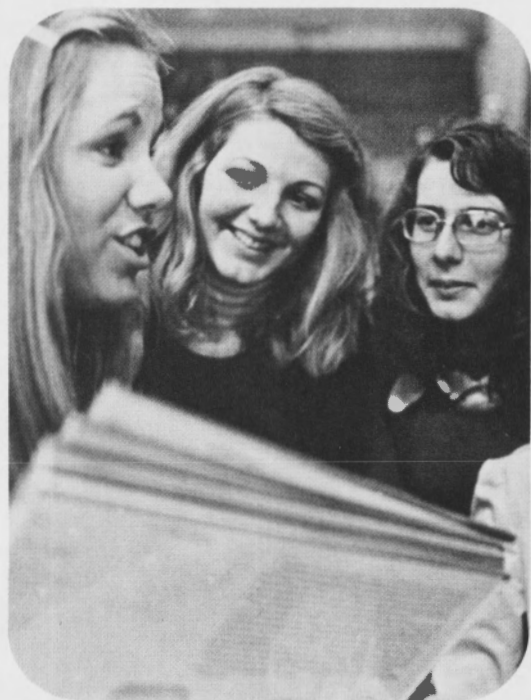
A young black from Harlem might find himself a guest in a millionaire's home in Minneapolis or if in an overseas cast, at the family table of a Spanish nobleman.

These person-to-person encounters are culturally and emotionally traumatic and so are many collective experiences. For instance, one cast recently gave a show at the famous Kalaupapa leper colony on the Hawaiian Island of Molokai. A troupe of 40 apprehensive students hiked down the three-mile trail that drops 1,600 feet to the isolated community founded in the last century by Father Damien.

Nineteen-year-old Jeannette Stephenson admits to having had a stereotyped, Biblical, horror picture of leprosy. She braced herself for the first sighting of scarred victims of the disease.



# Up with People



**Bottom Left:** Yugoslavian officials on stage. **Top Left:** Getting together after the show. **Top Right:** Tomorrow's Gonna Be A Fresh New Day. **Middle Left:** Up With People students at European Common Market briefing sessions. **Middle Right:** Pie in the Sky. **Bottom Right:** President and Signora Leone of Italy greet cast members.





"But looking back on it now," she says, "I think my visit to Kalaupapa was the most moving experience of my life. We didn't put on our show costumes. Somehow they would have been wrong in that setting. We just wore our levis and T-shirts. The words of our songs have never meant more to me. One song we sang has the lyric, 'We'll never run out of sisters and brothers / Never run out of love for each other / And I'll never run out of you.' In the front row of the audience there was a man without a nose and beside him a woman beating time with fingerless hands. I tasted the salt of tears on my lips — my own tears. My heart seemed to explode as I realized that people are people even when their bodies are mutilated, even when they are almost faceless."

This understanding and compassion is invariably reciprocated by audiences. Tens of thousands of letters of appreciation have been received at Up With People's offices.

After another cast had performed in the Tehachapi Prison in California, one of the inmates wrote: "The way crime can be combated is from within the man himself, and this is where you in Up With People reach. After your show I realized that all is not tragedy if we live up to life's basic truths as you sung them . . . Why someone has not previously given prisoners this kind of rehabilitation therapy is difficult to understand. You have opened up the hearts and minds of men who, to this point, have had little to look forward to . . . If only I had met people like you 15 years ago, I would not be here now. . . ."

Up With People has performed live in secondary and elementary schools to approximately half a million students annually over the past several years.

In a typical reaction, the student body president of South Shore High School, Brooklyn, New York, declared: "Our school will never be the same again. It is the consensus of teachers and students that Up With People is the single, most meaningful experience we have presented at South Shore."



**Middle Left:** Hiking down the rocky three-mile trail from topside that drops down to Kalaupapa, the Hansen's disease community on Molokai, Hawaii. **Top Left:** A rainbow arcs across the 1600-foot cliff that forms the northernmost boundaries of Kalaupapa. **Middle Right:** St. Philomena, the church of Father Damien, the colony's benefactor and eventual victim. **Top Middle:** Kalaupapa guide cracks coconut for cast members. **Top Right:** "I'll Never Run Out Of You." **Bottom:** "The Further We Reach Out."



Reviewing the high points of his year with *Up With People*, Eddie Jones, a black from Texas, reflected: "I loved giving shows in the inner cities. After one performance in New York where the crowds encircled us 50 deep, a cop came up to me and said, 'This is the first time all races in the neighborhood have gotten together without a disturbance.'"

That music knows no frontiers is itself an exhilarating discovery. The music that unites performers and audiences in a Philadelphia ghetto or a California prison or the Carnegie Hall is the same music that breaks down suspicions and division in Belfast, Bruges, Brescia and Brasília.

Both music and lyrics are written by students and staff. The sound is contemporary, the words upbeat and relevant. In bomb-blasted Belfast, for instance, the song which won the longest applause from a Protestant-Catholic audience has a chorus, "Whatcha gonna do if things get worse? / Who you gonna blame? / Are you gonna crawl into a hole / And just complain? / Are we gonna wait for some great leader / Or some mysterious 'they' / And watch the dream just slowly fade away?"

The Yugoslavs were fascinated by another lyric, "In this changing life we're living / Is there anything we've found? / What can we do to make it better for the children?"

Ember Reichgott joined *Up With People* as an 18-year-old college sophomore. Through the next twelve months she lived with different families in seven countries and 17 states of the Union. Today, as a law student at Duke University, she gratefully reflects that, "There are 61 refrigerators between Vancouver and Greece I can raid without penalty, and 61 bedrooms just like home."

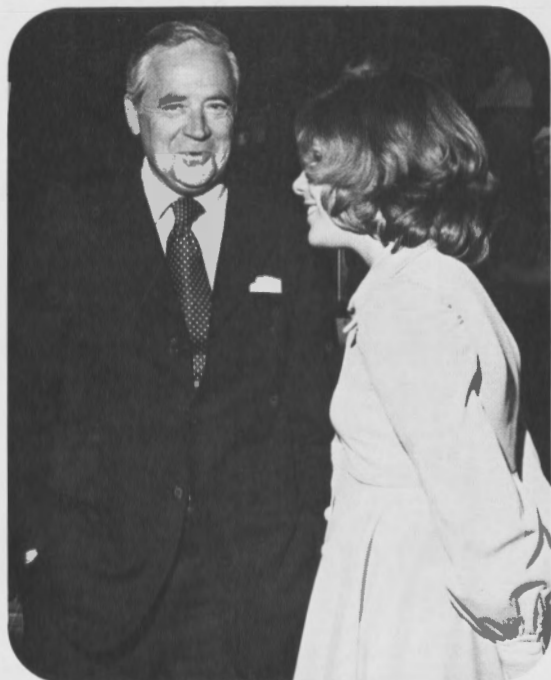




**Top Left:** Capt. Eugene Cernan, NASA, introduces Up With People president, J. Blanton Belk to Russian dignitaries in Houston.

**Top Middle:** "Rippin' Along." **Top Right:** Up With People on stage.

**Bottom Left:** Chairman of Board of Canadian General Electric meets with cast members. **Bottom Middle:** On a one to one basis. **Bottom Right:** Student discussion.





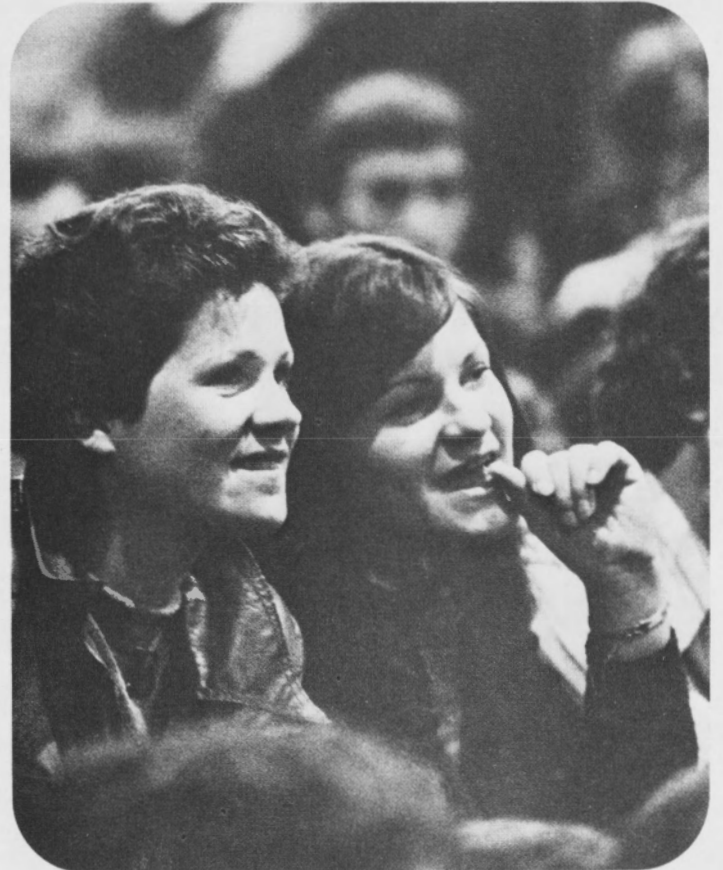




**Up  
with  
People®**







**Top:** Cast member with audience after the show. **Middle Left:** On stage at Expo '74. **Middle Right:** Sights and sounds. **Bottom Left:** College students react to show. **Bottom Middle:** Eastern Europeans caught in Up With People spirit. **Bottom Right:** Reflections on tour.

Warm, human, interracial, intercultural relationships are a bonus added to rich academic rewards — like comprehending the evolution of Western civilization through erudite lecture tours at civilization's cradle cities; like probing international issues through meeting people who make key decisions. In Ember's experience they included Common Market delegates, the President of Italy and a Soviet envoy to the United Nations.

Ember is convinced that *Up With People* has given her an ability to scan options and then to make rational and rapid decisions.

"Of course, as with any educational program, you gain in proportion to what you give. But with *Up With People* you're going all out all the time. With the show itself, you really have to pour it out for an audience. Then you've got to get along with all the members of the cast who are from totally different backgrounds. That doesn't just happen when you're bundled together in a family situation day after day, month after month. Every relationship is an opportunity to learn what makes people tick."

A large number of the alumni changed career plans during their year with *Up With People*. A preliminary survey reveals that many seek people-oriented jobs in social work, such as poverty programs, nursing, school counseling, teaching, medicine and prison reform programs.

Those who enter business often discover the recognition given to the *Up With People* training by commerce and industry. Malcolm Bridson, who recently graduated with a master's degree in international management, reports, "Of the six major corporations to which I applied for an executive position, four were more interested in my *Up With People* experience than in my (quite impressive) academic record. I have no doubt that I gained my present position largely as a result of my traveling with *Up With People* for a year. Today so many businesses are looking for people with a global perspective and experience in human relations. *Up With People* is known to provide both."





Most Up With People graduates return to college. Dean Bleibtreu has made his own campus study of Up With People alumni.

"They are different," he says. "They know what time means. They haven't the patience to sit around until they find a good teacher. They are self-starters and learn regardless. Among the student body their enthusiasm is highly contagious."

Hamstrung though they usually are by a shortage of funds, particularly to provide scholarships for talented minority students, Up With People has resisted every temptation to accept financial aid with strings attached.

"Very simply, we are not for sale," says Belk, "and it is precisely because we are not state aided and not pressured by partisan donations that we can always listen to our own drummer who emphatically has no political, sectarian or ideological ties."

"We're going to the bone, bloodstream and sinew of America," says Belk. "We are going to perform in the streets of the great metropolises and in places so small they are not mentioned on the map. We are going behind the 14-foot walls of our prisons and into the crowded wards of our hospitals. Our songs will be heard on campuses in every state, in churches, in corporation boardrooms, in the inner cities and out there on the prairie. Up With People is for everyone everywhere. That was our concept when we started ten years ago. That's what we are all about today."

So by the end of the bicentennial celebration, virtually all sections of American society will have been exposed to the Up With People spirit, perhaps still best articulated by the theme song:

Up! Up with people!  
You meet 'em wherever you go.  
Up! Up with people!  
They're the best kind of folks we know.  
If more people were for people,  
All people ev'rywhere,  
There'd be a lot less people to worry about,  
And a lot more people who care.

**Top Left:** The sights and sounds of Up With People. **Top Right:** Travel day by train through the Italian countryside. **Middle Left:** Up With People finale. **Middle Right:** Outdoor informal performance. **Bottom Left:** Cast member teaches host family show songs. **Bottom Right:** Up With People on stage.





**Top:** World medley time. **Middle:** Staff member meeting former Governor Vanderhoff of Colorado. **Left Middle:** Audience participates in Conga line. **Right Middle:** Performing on Canadian tour. **Bottom Left:** Cast member talking to Russian skating champion. **Bottom Middle:** South of the border with Up With People. **Bottom Right:** Russian scientists on stage at Houston performance.



# Up With People

About half the total cost of putting Up With People on the road comes from the sale of theater tickets, records, sheet music and other products. One quarter comes from tuition fees, and the other quarter from gifts and grants from individuals, corporations and foundations. Most gifts and grants are modest in size.

Although the cast members are usually housed in private homes and are often provided with meals and transportation when in a city or community, immense costs are incurred in the operation of the entire program. These costs include: the months of advance preparation which take place before a cast arrives in a city; transportation between cities by charter bus and overseas by plane; meals when not provided by the community; housing and feeding the small staff who must live in hotels/motels for communication and administrative reasons; producing and promoting the shows; and providing the quality and diversity of staff (musicians, accountants, logistics officers, nurses, counselors and the like) necessary to make management of such an unprecedented and complex undertaking as Up With People possible. Even so, only a modest 25.6 percent of the budget goes toward the staff salaries (permanent and student staff) as compared with 75 to 85 percent of a major university's budget.





# Up With People

## Up With People Board of Directors

J. Blanton Belk  
Chairman of the Board and President  
Up With People

Donald P. Birdsall  
Executive Vice President  
Up With People

Nella G. Barkley  
Past President of  
Association of Junior Leagues, Inc.

Hermann K. Bleibtreu, Ph.D.  
Director  
Museum of Northern Arizona  
Flagstaff, Arizona

Eugene A. Cernan  
Captain, USN  
NASA Astronaut  
Houston, Texas

Wesley M. Dixon, Jr.  
President  
G. D. Searle & Co.  
Chicago, Illinois

N. W. Freeman  
Chairman of the Board  
Tenneco, Inc.  
Houston, Texas

Ralph A. Hart  
Former Chairman of the Board  
Heublein, Inc.  
Farmington, Connecticut

Jackson S. Hipps  
Director of Educational Programs  
Up With People

Deane F. Johnson  
Partner  
O'Melveny & Myers  
Los Angeles, California

James E. MacLennan  
Director of Cast Operations  
Up With People

Jesse Owens  
Phoenix, Arizona

Sinclair Weeks, Jr.  
President  
Reed & Barton  
Taunton, Massachusetts

William F. Wilkes  
Vice President, Marketing  
Up With People

Jean Wittouck  
Former Chairman of the Board  
Tirlemont Sugar Refinery  
Brussels, Belgium

## Up With People International Advisory Board

Sr. Miguel Alemán  
President  
National Council of Tourism  
Mexico, D. F.

Mr. Edwin G. Alexander  
President  
Majestic Savings and Loan Association  
Denver, Colorado

Mr. Robert E. Allen  
Chairman of the Board  
Fuller & Smith & Ross Inc.  
New York, New York

Mr. Robert H. Anderson  
President and Chief Operating Officer  
W. T. Grant  
New York, New York

Mr. Alexander S. Atherton  
Honolulu, Hawaii

Mr. John L. Baringer  
President  
Willcox, Baringer & Co., Inc.  
New York, New York

Mr. Linden S. Blue  
Councilman at Large  
Denver, Colorado

The Honorable Frances P. Bolton  
Palm Beach, Florida

Sr. Rafael T. Caballero  
Empresas Caballero  
Nogales, Mexico

Dr. Gordon Cawelti  
Executive Secretary  
Association for Supervision and  
Curriculum Development  
Washington, D. C.

Mr. and Mrs. W. Van Alan Clark  
Jupiter Island  
Hobe Sound, Florida

Dr. William T. Close  
Director of Presidential Medical Services  
Kinshasa, Zaïre

Mr. King Cole  
President  
King Cole, Inc.  
Spokane, Washington

(Continued)

Up With People's special bicentennial year efforts are made possible in part by a major grant from the Lilly Endowment, Inc., Indianapolis, Indiana.



**Top Left:** Arriving in the foothills of the Italian Alps.  
**Middle Left:** Limbo. **Middle:** Makin' Music. **Bottom Left:** Kenya, East Africa.



# Up With People International Advisory Board

(Continued)

Mr. Evan Collins, Jr.  
Vice President  
Kidder, Peabody & Co., Inc.  
New York, New York

Mr. Robert A. Cook  
Office of the Premier  
Toronto, Ontario, Canada

Dr. S. Douglas Cornell  
Chevy Chase, Maryland

Mr. C. August H. Egli  
Owner & General Manager  
C. August Egli & Company  
Zurich, Switzerland

Mrs. Dwight D. Eisenhower  
Gettysburg, Pennsylvania

Mr. Robert M. Elder  
President  
Cummins Diesel Engines, Inc.  
Philadelphia, Pennsylvania

Mr. Otto N. Frenzel III  
Chairman of the Board  
Merchants National Bank  
Indianapolis, Indiana

Mr. Albert H. Gordon  
Chairman of the Board  
Kidder, Peabody & Co., Inc.  
New York, New York

The Honorable Louise Gore  
Washington, D.C.

Mr. L. Dickson Griffith  
Los Angeles, California

Mrs. John Bradley Greene  
Dayton, Ohio

Mr. Ralph Hansen  
Vice President/General Manager  
KTVI-TV  
St. Louis, Missouri

Mr. Albert Heijn  
President  
Albert Heijn, N.V.  
Zaandam, Netherlands

The Honorable Douglas S. Holsclaw  
Tucson, Arizona

Mr. Bob Hope  
Hollywood, California

Mr. Jerry V. Jarrett  
Executive Vice President  
The Cleveland Trust Company  
Cleveland, Ohio

Mr. Herbert C. Johnson  
Chairman of the Board (Retired)  
Consolidated Natural Gas Company  
New York, New York

The Honorable James R. Jones  
House of Representatives  
Washington, D.C.

Mrs. John H. Kraft  
Winnetka, Illinois

Mr. and Mrs. Jock Leslie-Melville  
Nairobi, Kenya

Mr. John E. Lewis  
President  
Discovery Corporation  
Tucson, Arizona

Mr. Victor P. Mangini  
Vice President, Marketing  
Faded Glory, Inc.  
Norwood, Massachusetts

Dr. Morris H. Martin  
Princeton, New Jersey

The Honorable W. J. McKeag  
Lieutenant-Governor of Manitoba  
Winnipeg, Manitoba

Mr. James J. Muigai  
Ruiru, Kenya

Mr. William E. Page  
District Vice President  
First National Bank of Arizona  
Tucson, Arizona

Mr. Anthony Quinn  
Rome, Italy

Mr. Robert W. Ramsdell  
Cleveland, Ohio

Mr. Ernst Reinecke  
Bonn, Germany

Mr. Ramos Sanchez  
Educational Talent Search Project  
Eight Northern Indian Pueblos Council  
Santa Fe, New Mexico

The Honorable Charles Sawyer  
Cincinnati, Ohio

The Honorable and Mrs. Robert  
Sargent Shriver, Jr.  
The Joseph P. Kennedy, Jr. Foundation  
Washington, D.C.

Father José Antonio de Sobrino  
Calle Pablo Aranda 3  
Madrid 6, Spain

Mr. and Mrs. Hugh G. Soest  
Jackson Hole, Wyoming

Mr. Gert H. W. Schmidt  
President/General Manager  
WTLV Television  
Jacksonville, Florida

M. Pierre-Paul Struye  
Secretary General  
Société Belge des Bétons  
Brussels, Belgium

Mr. Eugene J. von Teuber  
Office of International Programs  
The University of Arizona  
Tucson, Arizona

The Honorable Charles S. Thomas  
Corona del Mar, California

Mr. Edward J. Vinnicombe  
Vice President  
McCormick and Company  
Cockeysville, Maryland

Mr. Heinz Waizenegger  
Senior Vice President  
Mercedes-Benz of North America, Inc.  
Montvale, New Jersey

Mr. and Mrs. DeWitt Wallace  
High Winds  
Mt. Kisco, New York

Mr. C. Langhome Washburn  
Vice President  
Epcot World Showcase  
Washington, D.C.

Mr. William H. Wilson  
Cleveland, Ohio

Dr. Archibald M. Woodruff  
President  
University of Hartford  
West Hartford, Connecticut

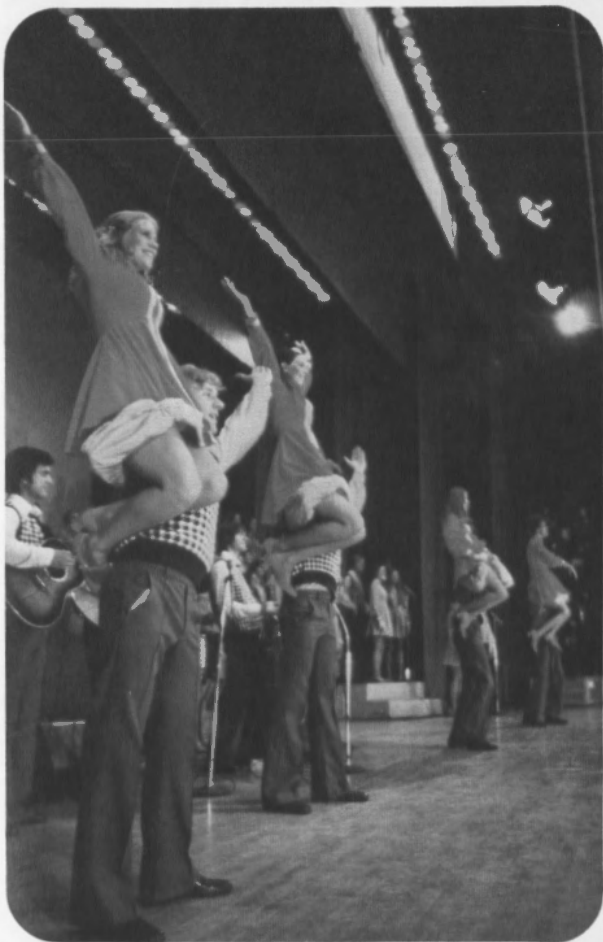
Sr. Rodolfo Bay Wright  
President, Spantax, S.A.  
Madrid 16, Spain

Mrs. Philip K. Wrigley  
Chicago, Illinois

Mr. Robert Young  
Beverly Hills, California



**Top Right:** Drum break.  
**Bottom**  
**Center:** Rippin' Along.  
**Middle Right:** Exchanging  
 ideas with cameraman.  
**Bottom Right:** Hyatt  
 Regency, San Francisco.





Some items in this folder were not digitized because it contains copyrighted materials. Please contact the Gerald R. Ford Presidential Library for access to these materials.

Up With  
People in  
denim by...



#### WHAT COLOR IS GOD'S SKIN?

Words and Music by Thomas Wilkes and David Stevenson

"Good-night," I said to my little son.

Copyright © 1964 by Up with People Incorporated

#### UP WITH PEOPLE!

Words and music by Paul and Ralph Colwell

It happened just this morning,  
I was walking down the street

Copyright © 1965 by Up With People Incorporated

# Are you putting us on?

Last year over 20 million people put on Thom McAn  
Shoes . . . including the cast of UP WITH PEOPLE.

Thom McAn

Cast shoes courtesy of the Thom McAn Shoe Company, A Division of Melville Shoe Corporation

## THE FARMHOUSE

Words and Music by Bill Cates and Paul Colwell

We'd been windin' through the mountain ranges,

## WHATCHA GONNA DO?

Words by Paul and Ralph Colwell

Whatcha gonna do . . . etc.

Copyright © 1975 by Up With People Incorporated

But they gave me something instead, in a song.

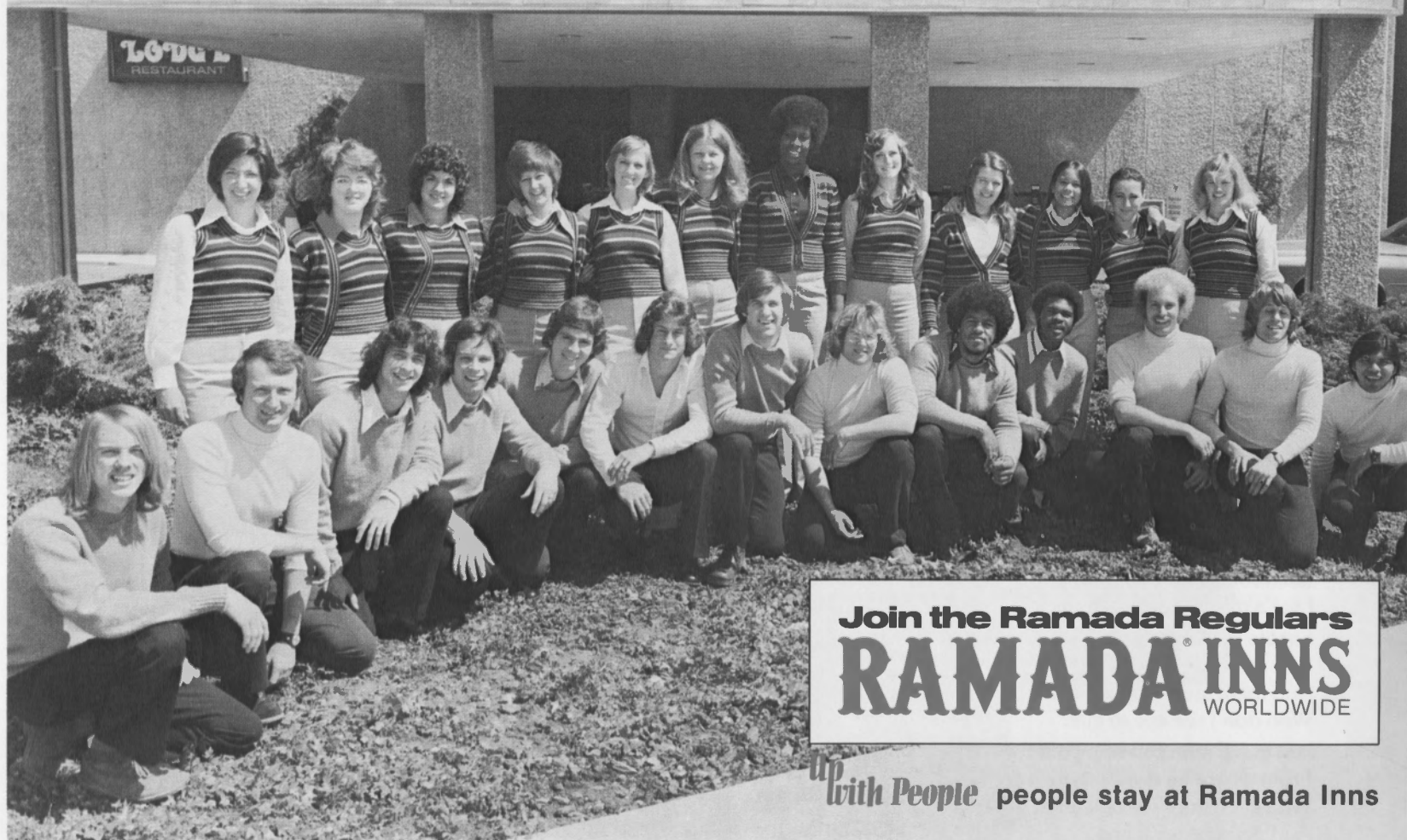
They were singin' . . . etc.

Copyright © 1975 by Up With People

# RAMADA INN

**WELCOME  
RAMADA REGULARS**

**RAMADA INN  
SALUTES UP WITH PEOPLE**



**Join the Ramada Regulars**  
**RAMADA INNS**  
WORLDWIDE

*Up*  
**With People** people stay at Ramada Inns



## PIE IN THE SKY

Words and music by Paul Colwell and Bill Cates

Poor boy cries for a piece of the pie.  
No shoes, dirty shorts, shirt half his size.

## SAVE THE DANCER

Words by Steven Cornell, Frank Fields, Paul and Ralph Colwell  
Music by Frank Fields and Ken Ashby

The ravages of human history,

Copyright 1974 by Up With People

## WHERE THE ROADS COME TOGETHER

Words by Paul Colwell  
Music by Paul Colwell and Herbert Allen

Copyright 1974 by Up With People

where the roads come together, up the way.

Copyright © 1971 by Up With People Incorporated

# The People's Choice

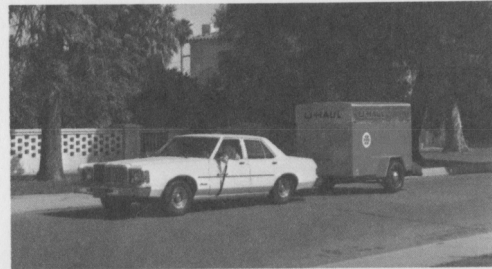
Each year, more people move with U-Haul equipment than with any other kind. Why?

It's designed to move families and their furniture...not freight. At 50% to 75% less than the van line cost. Whether it's an easy-riding Ford truck or easy-towing trailer, U-Haul has the right equipment for your move. That's why "Up With People" is moving with U-Haul.

**U-Haul equipment. It's designed with people in mind.**

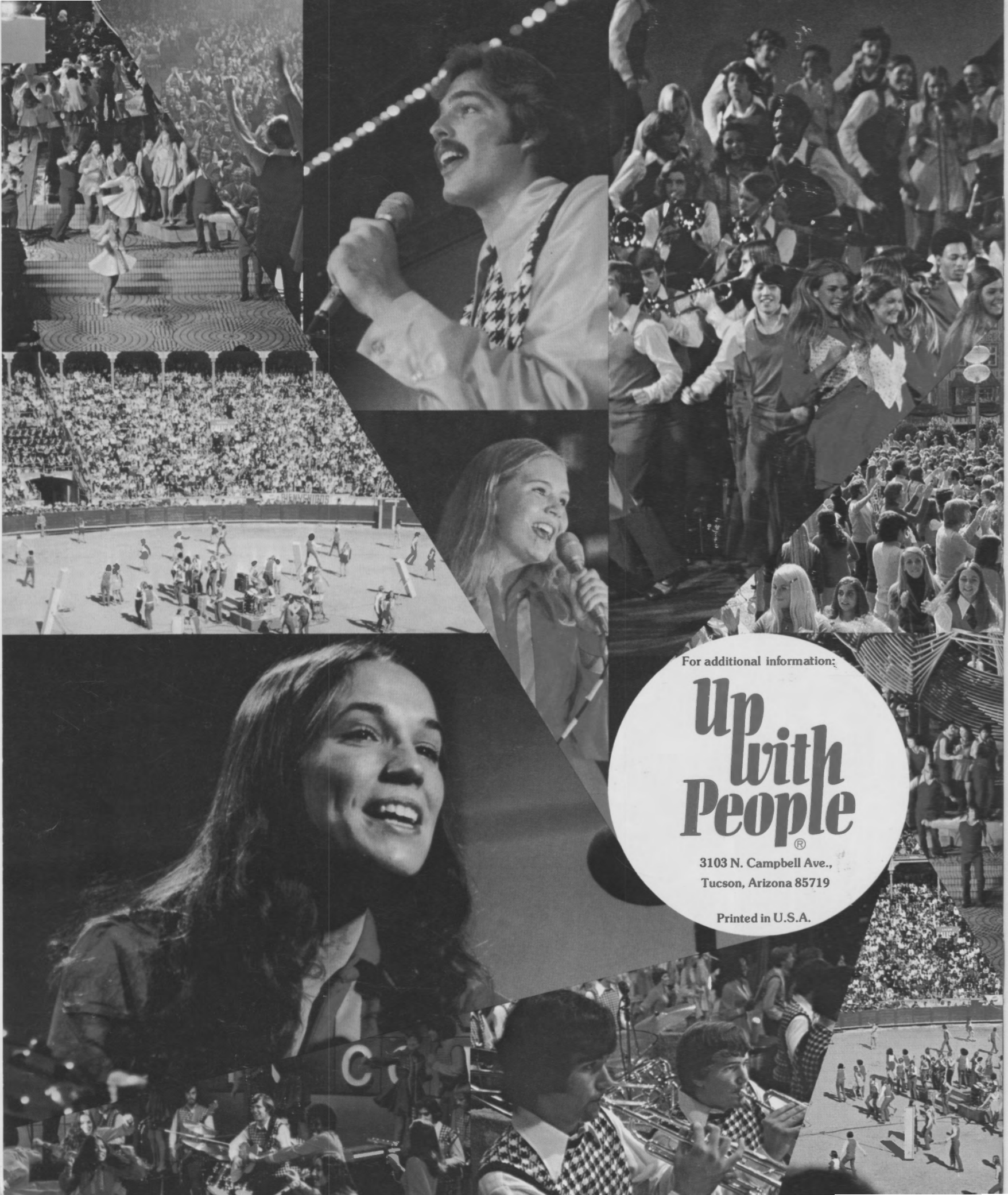
**U-HAUL**

HOUSEHOLD MOVING



**FREE 24-PAGE MOVING GUIDE**

Write to:  
U-Haul International, Dept. P  
P.O. Box 21503  
Phoenix, Arizona 85036



For additional information:

# Up with People<sup>®</sup>

3103 N. Campbell Ave.,  
Tucson, Arizona 85719

Printed in U.S.A.



Thursday, September 2, 1976 - 5:30 p.m. - Tent Pavilion

Vail Institute presents

# Up With People

## P R O G R A M

Up With People!  
Good-Time Neighborhood Band  
It's Not Easy (Not Knowing)  
Hey, You, Out There  
The Farmhouse  
World Medley: Yugoslav Folk Dance  
Alma Llanera  
Vive la Compagnie  
Nunca  
Wel Anne-Marieken  
Square Dance

What Color is God's Skin?  
Rippin' Along  
Give the Children Back Their Childhood  
I Don't Want to Rule the World  
Up With People!

## I N T E R M I S S I O N

Arizona Highways  
Makin' Music  
A Memorable Tune  
Pocket Full of Dimes  
Save the Dancer  
Two Hundred Years and Just a Baby  
1776-1976 Medley: Wondrous Love  
Shula Aroon  
Ebaganaduso  
Great Gittin' Up Mornin'  
Wabash Cannonball  
Charleston  
In the Mood  
Rock Around the Clock  
City of New Orleans  
Philadelphia Freedom  
Two Hundred Years and Just a Baby (Reprise)  
Whole Other Thing  
Where the Roads Come Together





# ACKNOWLEDGMENTS

Town of Vail  
John E. Park, Jr.  
Otto Stork  
Jan Gardner  
Michael Dulude  
Ann Schmidt  
Donna Meyer

Advantage:Vail, Inc.  
Pat Romeo  
Ed Goldfarb  
Cindy Lamont  
Rob Fauver  
Erik Brofos  
Chris Powers

Joan Madison  
Tom O'Brien  
Allen Knox  
John Thomas  
Harry Melnick  
Peter Gardner  
The Lodge at LionsHead

\*\*\*\*\*

## VAIL INSTITUTE - BOARD OF DIRECTORS

James M. Slevin  
President  
John A. Dobson  
Vice-President  
Elaine E. White  
Secretary  
Charles R. Anderson  
Treasurer

Margaret S. Burdick  
Florence A. Goldfarb  
Helen M. Kidder  
Michael M. Salloway  
Deborah W. Warner  
James R. Bartlett  
Terrell J. Minger, Honorary Members

Gibson Gardner  
Executive Director  
Joan Murphy  
Administrative Secretary  
Gerald A. Karr  
Technical Director

\*\*\*\*\*

The Vail Institute welcomes the following new members as of August 28, 1976:

PATRON: Bank of Vail

SPONSOR: Luis G. Aguilar, Jr.  
John C. Breaker  
Canada's of Vail  
Mr. and Mrs. George Caulkins  
Robert E. Ford  
Charles E. Gersbach  
Gore Range Properties  
Mr. and Mrs. David Gorsuch  
Mr. and Mrs. William R. Grant  
Mr. and Mrs. Gary Klein  
John McBride  
Mr. and Mrs. C. Frederic Meyer  
Myron M. Miller  
Mr. and Mrs. Charles Rosenquist  
Slifer and Company  
The Squash Blossom

SUSTAINING: Mr. and Mrs. J. R. Bartlett  
Blue Cow Restaurant  
Mr. and Mrs. Gordon Brittan  
Mrs. G. K. Dickerman  
Dr. and Mrs. Fred Distelhorst  
David M. Floyd  
Richard A. Forsling  
Ann L. Goodro  
J. B. Ladd  
Libra Gallery  
Thomas C. O'Brien  
Mr. and Mrs. Peter W. Seibert  
John C. Siegesmund, Jr.  
Western Federal Savings

CONTRIBUTING: Mrs. Duane T. Albrecht  
Mr. and Mrs. Cyrus Allen, Jr.  
Alpenrose Confiserie  
L. F. Anderson  
Mr. and Mrs. Harry Andrews  
Mr. and Mrs. Walter Churgin  
Mr. and Mrs. R. T. Counley  
Jack J. Curtin  
Carol C. Falk  
C. Kirk French  
Dr. and Mrs. N. K. Furlong  
Mr. and Mrs. H. J. Gerken  
Mr. and Mrs. Thomas Gibson  
Mr. and Mrs. R. S. Gittings  
Polly Grimes  
Mr. and Mrs. Haig Henessian  
Judith Homes  
Mr. and Mrs. Harold A. Jacobs  
H. J. Keeler, Jr.  
Clarkson Lindley  
Dr. and Mrs. Daniel L. Maryland  
Mr. and Mrs. Charles Ogilby  
Mr. and Mrs. Arthur Olson, Jr.  
Ruth Rankin  
Celia Roberts  
Royal Daniel Sloan, Jr.